



In Supplies Purchasing Department, Mabel Hill, an invoice clerk, explains her work to (from left), Emma Moore, of Greensboro; Shannon Bailey, Madison; and Sherrian Pyrant, Providence.



In Raw Materials Purchasing Jewel Washburn, a secretary, answers questions for (left to right) Mrs Janice Caskie, instructor; Pearl Young, Greensboro; and Cynthia Woods, of Spanish Honduras.

Employee Health Is Safeguarded At Mills

(Continued from Page Four)

over a certain age, down to and including assistant foremen in the mills. This is a voluntary examination with the purpose of finding any hidden or beginning diseases and then motivating the person to follow up and get any treatment through his own physician. This program could be extended to others in the future through the mobile health unit.

Occupational medicine has other facets not generally thought of in the scope of a medical department. Dr. Springer said his department must work closely with the Safety Department because of the obvious tie-in between accidents and the resulting necessity of medical attention; and the Legal Department in helping to prepare cases involving an injured person.

Additionally, the medical director in cooperation with the Safety Department is involved in inspections at mills on such problems as dust and noise. "We look into any problems that exist in the environment and which affect the health of the employee," Dr. Springer said.

There are six employees in the Medical Department at Eden, in addition to Dr. Springer; and the services of a private physician are available at every mill. There are full time nurses at the Columbus Towel Mill and at the Fieldale Towel Mill.

All of this combined means a high degree of medical attention, facilities and knowledge available for all Fieldcrest employees.

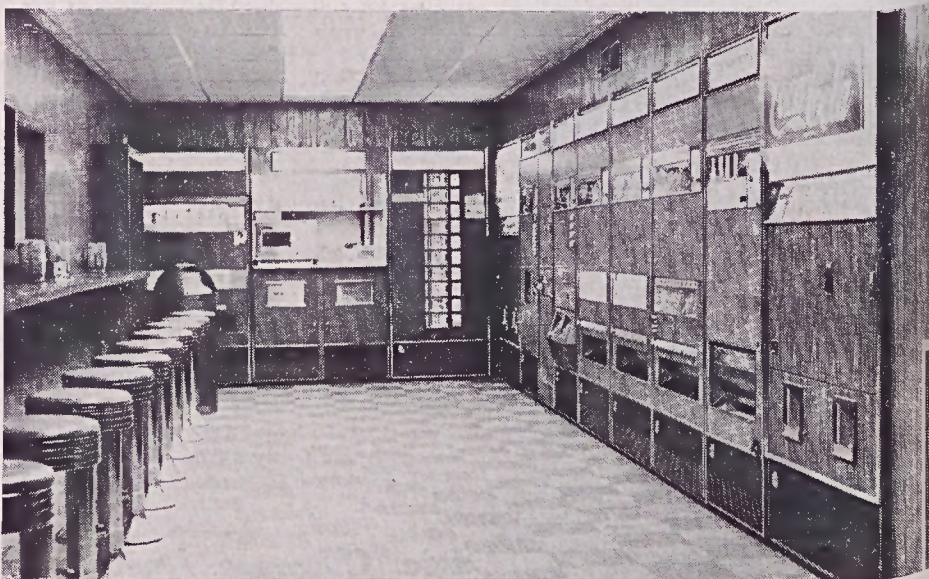
Business Students See General Offices

Office Practice students from King's Business College, Greensboro, toured the General Offices recently, one of the several such groups that will be visiting Fieldcrest this spring.

Mrs. Janice Caskie, instructor in office practice at King's Business College, led the students who, after touring the General Offices, attended a brief pro-

gram in the conference room.

Lou Stophel, secretary to Dr. L. H. Hance, talked to the students about secretarial opportunities at Fieldcrest; Betty Flinchum, secretary to J. F. Scott, presented a film and discussion on Fieldcrest fashions. The group visited the Fieldcrest Store before returning to Greensboro.



New Canteen Room Built At Blanket Mill

A new canteen room, modern in every respect and equipped with the latest-type vending machines, has recently been completed in the Yarn Preparation Department at the Blanket Mill. This canteen also serves the employees of the Plant Service Department.

The new air-conditioned room is

paneled, has a tile floor, modern lighting, and has permanent stools and a counter. Vending equipment includes machines for cold drinks, coffee, soup, sandwiches, milk, orange juice, pastry, candy and cigarettes. Other equipment includes a micro-wave oven and a dollar bill changer.