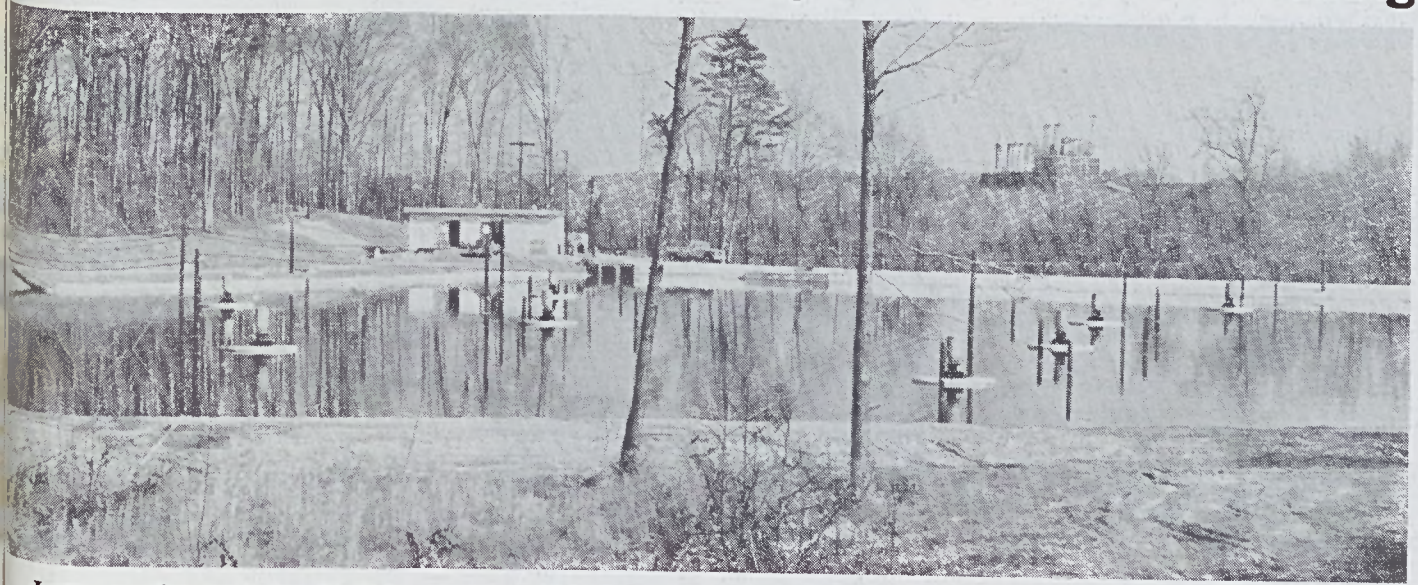


# New Waste Treatment Plant In Operation At N. C. Finishing



Large aerating basin has 12 50-hp aerators which discharge water as spray, allowing it to pick up oxygen from air.

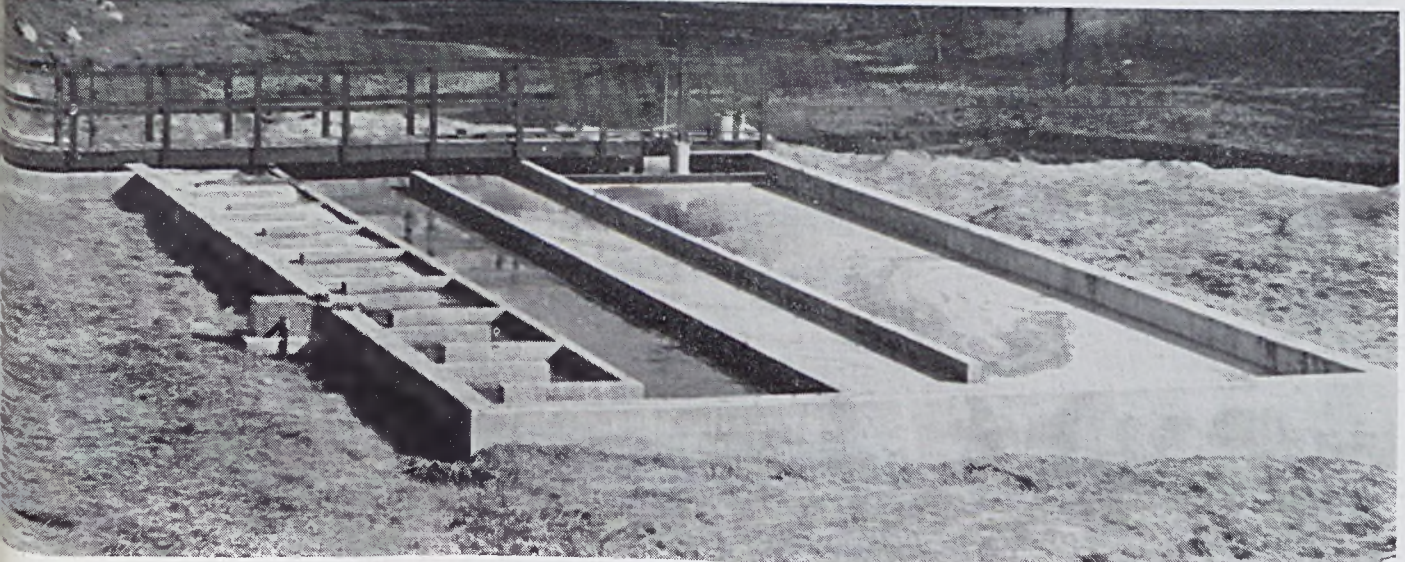
The new waste treatment plant recently put into operation at the North Carolina Finishing Co. division at Salisbury is shown in the accompanying pictures. The system is designed to remove solids and restore oxygen to the millions of gallons of water used by the plant before it goes back to the Yadkin River.

Waste is first pumped into a large aerating basin which holds 10 million gallons of water, enough to allow three full days of aerating. In the aerating process, fast-driven propellers spray the water as shown in the pictures, bringing it into contact with air from which it picks up oxygen.

From the aerating basin, the water flows to a chlorine contact basin where chlorine is added, further purifying the water before it is returned to the river.



This is close-up showing spraying action of aerators at waste treatment plant.



After being aerated, water flows to chlorine contact basin where it is further purified before being returned to river.