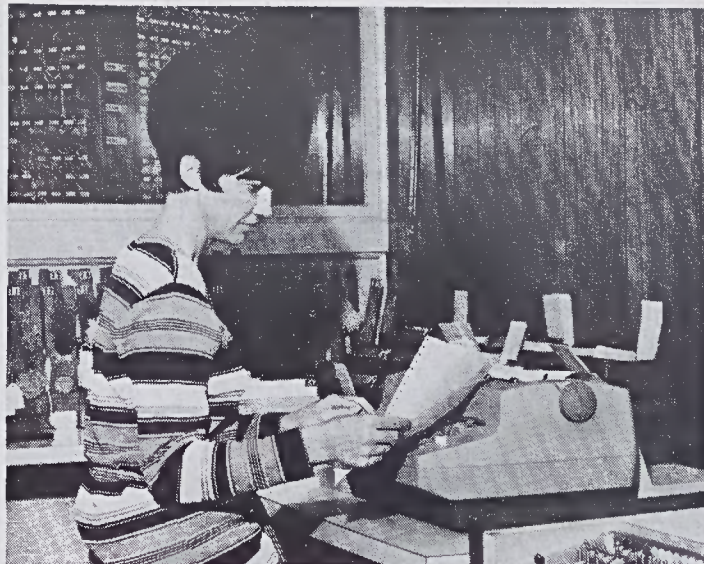


James D. Gusler, weaver, demonstrates the method by which an operator will be able to dial in a code on a console connected to the computer and be given an efficiency reading for his loom.



Dorothy Dalton, schedule clerk, shows how additional information is fed into computer through an input-output typer to determine efficiency for machine down longer than 15 minutes.

## Karastan Testing New Computer Set-Up

Karastan Information Services is in the process of testing a computer system which will put it in the unique position of having a business computer and a production monitoring computer connected to the same disc file. Mr. J. L. Connolly, manager-Karastan Information Services, says that he knows of no other company which has these type computers sharing the same data base. The production monitoring computer (GE/Pac 4020) is directly wired to looms, reels, beamers and winders and scans these operations every five seconds. For the looms it records running time, yardage, loom speed and stops and also gives the reason for stops. For the rest of the machinery it records running time, down time and number of stops.

It is shift oriented, people oriented and machine oriented to allow operators, fixers and supervisors a better means to ascertain their performance.

Functional reports based on data transmitted by the computer will come in regularly and supervisors can, on a scheduled or demand basis, ask for any of these associated reports. From these reports it will be possible, for example, for a supervisor to tell if excessive stops are caused by the machine or are due to sub-standard material going through the loom.

"What all this will do for us," says Mr. Connolly, "is to enable us to use our equipment more efficiently, which increases our productivity, which in turn enables us to be more competitive."

A three phase approach is being used

with regard to the system. The first part is machine monitoring. The second is in-process control. The lot number will be dialed into the computer when the yarn is received from the Dye House. Because the monitoring is machine oriented, the production cycle of specific lot numbers can be traced through each process.

The third approach involves building an incentive pay system. Because the production monitoring computer is scanning constantly it can serve as a base for piecework payroll.

Some of the objectives and expected benefits of the system are a reduction of machine downtime, improved control of the quality of production, improved efficiency, lower cost, better planning and servicing of equipment and an improvement in supervisory utilization of equipment, materials and personnel.

## Norvell Named NE Service Center Manager

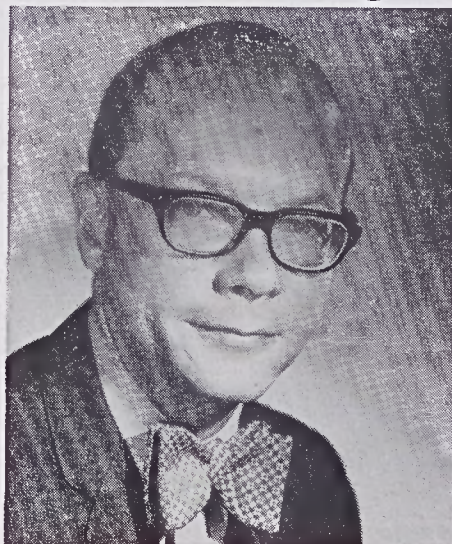
The appointment of James D. Norvell as manager of the Northeast Service Center in Piscataway, N. J., has been announced by Frank W. Green, president of the Fieldcrest Marketing Division.

Since joining Fieldcrest in 1963, Mr. Norvell has served as assistant manager of Fieldcrest Towels Sales until 1968, when he was appointed product manager.

A year later he was named product manager of the Automatic Blanket Department, a position he held until his present appointment.

Mr. Norvell, a native of Slater, Missouri, is a graduate of the University of Iowa with a BSC degree in business administration.

He, his wife, Kay, and their three sons make their home in Upper Montclair, New Jersey.



JAMES D. NORVELL

## Towel Mill Recognizes Top Weavers, Fixers

The Fieldale Towel Mill's outstanding weavers and loom fixers are listed below for the most recent periods of record.

The "Weavers of the Week" are those with the lowest percent of seconds with respect to the standards for the various loom groups.

The "Top Fixers" are determined through a combination of low seconds and high loom efficiency on their respective sections.

### Weavers—W/E December 6

Dobby Terry ..... Ralph Ballard  
Jacquard Terry ..... Frank Bradley

### Fixers—W/E December 6

Dobby Terry ..... Jackie Hubbard  
Jacquard Terry ..... Frank Fulcher