



One of the most familiar faces around the Albemarle Plants is JULIA ROBINSON, plants # 1 & 2. Julia is always ready to lend a helping hand to anyone in need. She has a ready smile for everyone she comes in contact with, and has been employed at the Albemarle Plants for thirty-nine years.



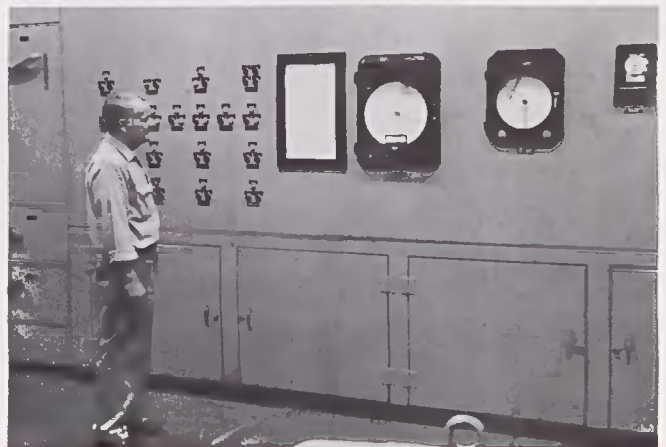
CHARLES NODINE, Supervisor in the Shipping Department is shown at one of the new Crimping machines. CHARLES came to work at Textured Yarn Plant in February, 1968. He was formerly employed at Cashion's Food Mart in Cornelius, N. C. He and his wife, NELDA KAY, who live in Cornelius, have two children; a boy and girl. The NODINES attend Davidson Baptist Church. His hobbies are softball, fishing and drawing.

ON THE SPOT

 Shots
 AROUND the PLANTS



PHILLIP POOVEY is the second shift winding section-supervisor at the American Plant. He and his wife, Sue, have a two year old daughter, Denise. Phil is looking forward to summer, so he can enjoy his favorite sport, water skiing. He also enjoys motorcycle-riding.



ROY LEE CLOVER, first shift Air Condition Operator at Albermarle Plants. Roy takes great interest in his work to see that everything is in tip-top shape because without the Air Condition apparatus the plants cannot run. He has been employed seven years with American & Effrd.