

# MIRROR

ISSUED WEEKLY  
PART OF  
NB Public Library  
407 New St.  
5¢ Per Copy



VOLUME 7

NEW BERN, N. C., FRIDAY, OCTOBER 30, 1964

NUMBER 31

Our apologies to Eunice (Wray's Studio) Wray. We failed to give her credit in last week's issue for the front page photo showing Robert L. Pugh standing beside his portrait.

Eunice not only made the photograph, but more than that, the excellent portrait itself was produced in her establishment. Bob's likeness, now permanently placed in Doric Masonic Lodge here, is one of many turned out by Eunice and her able assistant, Doris Smith.

While we're on the subject, Eunice deserves some sort of trophy for the courage she displayed in the not distant past when a fast spreading fire destroyed her business. For most folks it would have been a crushing blow.

Before the embers cooled, she and Doris salvaged what was left of value in the ruins and continued the firm's operation in temporary quarters. Today the studio is back in its original location, as attractive as ever. You just can't beat that kind of durability.

And, as long as we're passing out words of praise, let's speak highly of any and all individuals and groups who have been bringing the North Carolina Symphony to New Bern for years.

No adult who has seen the happy faces of school children attending the free afternoon concerts here will ever forget the sight. Your membership, entitling you to attend the evening concert, makes the special performances for juveniles possible.

Never let it be said that youngsters can't appreciate good music well presented. When exposed to it, they respond eagerly. What a pity it is for any child, or any adult for that matter, to miss out on the rich experience that comes from association with the music of the masters.

Although neither of the three will be on North Carolina's ballot, the Prohibition, Socialist Labor, and Socialist Workers parties have presidential and vice-presidential candidates in the running for Tuesday's National Election.

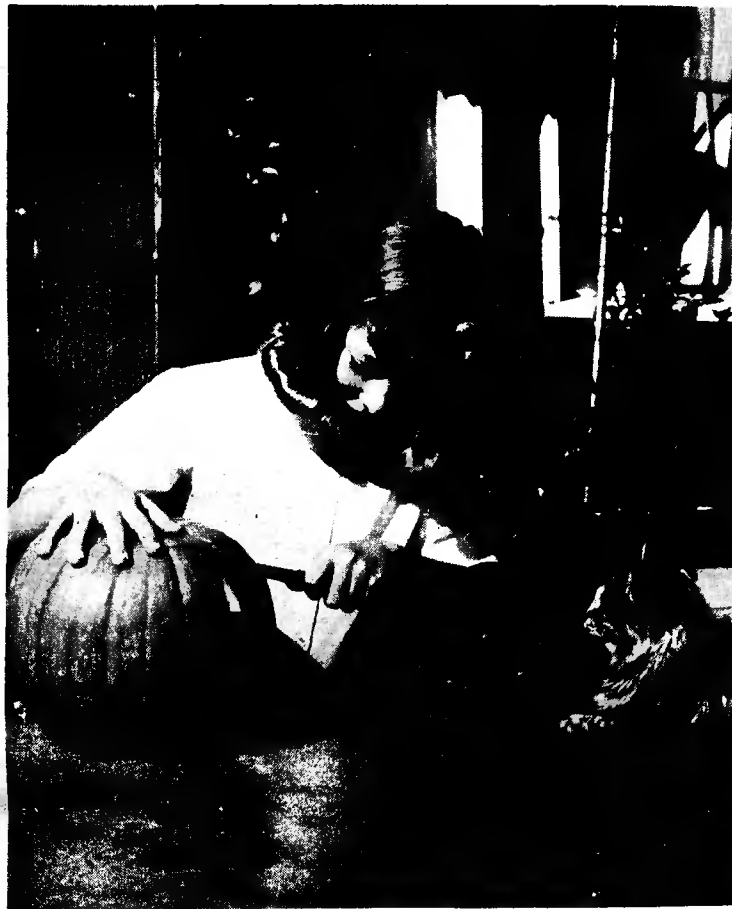
The Prohibition Party is on the ballot in Colorado, Delaware, Indiana, Iowa, Kansas, Massachusetts, Montana, New Mexico and North Dakota. E. Harold Munn, head of the department of education at Hillsdale College (in Michigan) is its presidential choice.

The Socialist Labor ticket is on the ballot in Arizona, Colorado, Delaware, Indiana, Iowa, Massachusetts, Minnesota, New Jersey, New Mexico, New York, Pennsylvania and Virginia. Eric Hass, a New Yorker, is the standard bearer.

The Socialist Workers Party has an aspirant for the White House listed in Colorado, Iowa, Minnesota, Montana, New Jersey, New York, North Dakota and Pennsylvania. Clifton Deberry, who hails from Holly Springs, Miss., is its presidential candidate.

Whatever may be the outcome in Craven County, as far as the Johnson-Goldwater race is concerned, it must be agreed by respective supporters that Barry's forces have been more vocal and more energetic in pushing their cause than has

(Continued on Page 4)



IT'S THAT TIME AGAIN—Tina Dodson, 8, is a third grader at Brinson Memorial School just outside New Bern, on the Old Morehead Highway. Here, from start to finish, you see her transform a pumpkin into a Halloween jack-o-lantern, while her cat, Fluffy, watches intently. First, she removed the top and scooped out the innards. Then she carved a pair of

eyes, fashioned a nose, and added a good natured grin. Fluffy viewed the grotesque face with apprehension, but Tina's smile and reassuring words calmed the feline's fears. Wonderful is the word for a little girl's world, wonderful indeed.—Photos by Billy Benners.

