

**MIRROR
MEDITATION**

By EMMITT L. BRINSON

Everyone in his lifetime has heard much about the missing link. Evolutionists have tried to find this link in their search for the step by step growth of man to his present stature.

As yet is has never been found--and it never will--because the answer lies in the peculiar growth of the brain, within man alone. Man's distinct design.

In a report in 1958 by Loren Eiseley, the eminent Scientist of the University of Penna., he states "man's brain at the time of birth is the same as that of the gorilla--and at that time the two infants will look pretty much alike, however in a few short months after birth the brain of man literally mushrooms to three times its size!"

It is a peculiar leap, unlike anything known in the animal world, giving man the unique qualities he possesses. Scientists have dissected the brains of many types of monkeys and animals in an effort to compare. As yet they have not found anything that would cause this phenomenal change in the infant's brain, this biological law.

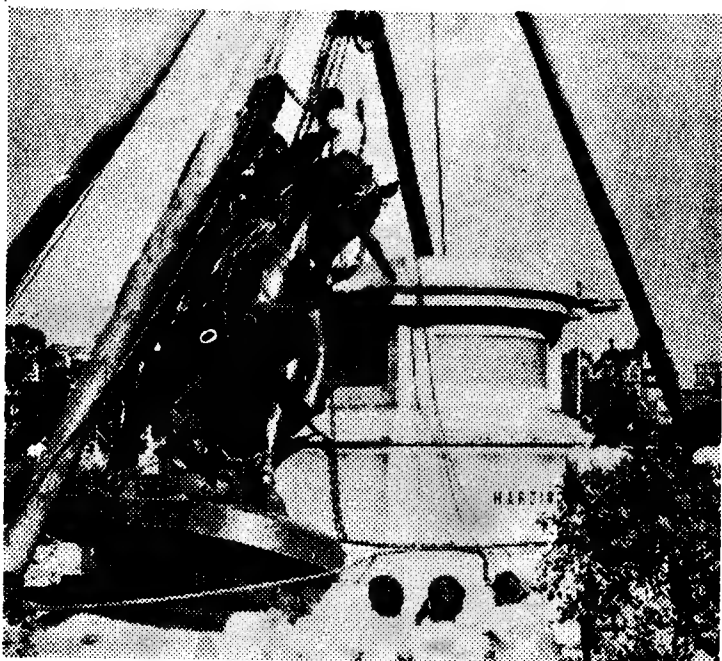
In other animal families there is very little change in structure over a period of the ages, or they find in research, the step by step process of any change. But not so with man. This is the link they try to locate.

During the ice ages many types of animals and birds became extinct. From the geological finds, advanced man appeared after those ages. Prior to his appearance this world was ruled by the animal kingdom--survival of the fittest. Through the human mind, time and darkness, good and evil, entered and possessed the world.

But this step of the human did not come from animal lineage. It so it cannot be traced. The many finds as claimed by science merely shows resemblance and definitely keeps their finds intact, within limited groups.

There is no link in this imaginary chain. The door which opened, ushering mankind on this globe only opened once, and the law and order behind this design will not change. Our very basic rules of existence arise from this beginning.

First, the brain has to treble in size. Second, this had to be affected, not in the womb, but rapidly after birth. Third, childhood had to be lengthened to allow this brain, divested of most of its precise instinctive responses, to receive, store and learn to utilize what it received from others. Fourth, family bonds had to survive seasonal mating and become permanent, if this creature were to be prepared for the adult role as planned by the Creator.



COMING DOWN . . . Memorial statue of Lord Hardinge, British Gov-General of India from 1844 to 1848, is removed from its pedestal in Calcutta, as part of India's nationwide drive against British statues.

To me the same answer applies here as it does in the lesser energy patterns found in the living cells. Activity caused by energy. Energy iminating from an eternity domain. The same eternity domain some hesitate to identify. This my friends is God--as we know him.

Man did not grow link by link--step by step. If he did God intended it to be so in order that he might give a part of his own, to the highest developed Creature to take possession of and rule this globe. But as science has found, man as he now stands happened all

at once, a unit in the mind of the Creator--potentially immortal.

Man has since in leaps and bounds, and even more so recently, accelerated because he strove against extinction.

I sometimes wonder in deeper thoughts. In the infancy of this universe, all life within the set patterns of law and order, could not survive the as yet untamed elements. The animal kingdom was a step by step process of trial and error, until all things

had proven good in the sight of the Creator. The last step was not a trial by the Creator, but a vast leap because it is written:

"And the Lord God formed man of the dust of the ground, and breathed into his nostrils the breath of life; and man became a living soul." "Created in his own image."

No, my friends--the missing link will never be found.

**THIS WEEKEND
IT'S PEPSI**

for those
who think
young!



Get an extra carton today!



2101 Neuse Blvd.

WHERE PARKING IS NO LONGER A PROBLEM

STORE HOURS

Mon., Tues., Wed. 'til 6 p.m.
Thur., Fri., & Sat. 'til 9 p.m.



**Sunbacks,
a sunny
value**

**CAROL BRENT COTTONS
WITH SCHIFFLIE TRIM**

\$5.98

MISSES, HALF SIZES

Guaranteed to put you in a sunny mood; Wards own Carol Brents, that give you a lot of quality fashion, for a low budget-happy price! Washable yarn dyed combed-and-mercerized cotton cord, with long-wear "extras" such as Talon® zipper, deep two-inch hem. Shown, one of many styles, all sleeveless and bare-backed, with Schiffle embroidery trim. Dress shown; blue or pink and white stripes.

**FOR
YOUR CHOICE
of Sacred,
Popular and
Classical Sheet
Music and
Musical
Instruments
It's
FULLER'S
MUSIC HOUSE**