

## Soil Lost Each Year

Soil erosion contributes to 7.5 tons of soil lost in North Carolina each year. This soil usually winds up in our streams and rivers, thus effecting our water quality. Best management practices for controlling soil losses and conserving moisture and improving water quality should be considered by Craven County farmers.

In Craven County, most of our soil losses come from wind erosion. This can be reduced by planting cover crops, leaving old stubble on the fields to hold soil, and practicing no-till farming where ever possible. Non-Till Crop Production requires a lot of skill and management, but it can be successful if handled correctly.

An outline of management tools needed by producers considering No-till corn for 1984 is available from your agricultural extension on service in New Bern.

## Cocaine

(Continued from page 10)

Roughly 3,000 deaths in the state last year could be attributable to alcohol abuse if one counts traffic and other accidents, liver damage, mental problems and circulatory illnesses, he said. Anti-depressants claimed 40 individuals, more than three quarters of whom were ruled suicides.

McBay said cocaine deaths probably result when the purity of the drug supply goes up unbeknownst to the user.

"If you are taking one amount of the drug and then all of a sudden, the strength is doubled or tripled, it can kill you almost instantaneously," he said.

Cocaine comes from the dried leaves of the coca bush which grows primarily on the slopes of the Andes Mountains in Bolivia and Peru.

A toll-free hotline provides help to people addicted to the drug. The telephone number is 1-800-COCAINE.

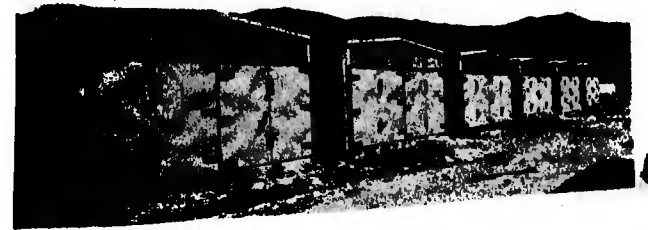
## Twelfth Annual Tryon Coin Show

The Craven County Coin Club is sponsoring the Twelfth Annual Tryon Coin Show at the Moose Lodge on Highway 70 in Havelock, North Carolina on Saturday and Sunday the 14th and 15th of April 1984. Hours Saturday are 10:00 a.m. to 6:00 p.m.

Sunday 12:00 noon to 6:00 p.m. Admission is free and the public is cordially invited to attend.



The first television panel game show was a six-a-side Spelling Bee, presented by the BBC May 31, 1938.



It is time to be making plans for your 1984 Bulk Barn Needs. The man to see for Estimates, Terms, and Delivery is Roy Hicks, Jr. at

## Swain Gas Company

Main Street

Vanceboro, N.C.

244-0320

**DRIVE SAFELY**

### START YOUR SKIN CARE PROGRAM TODAY!

Have a Trained Independent Beauty Consultant introduce you to Mary Kay Cosmetics with a complimentary facial! She will explain in detail a personal skin care program just for you.

For An Appointment  
Call Collect:

Marzette Lewis or Michelle Baker  
726-8422 or 223-3595

Spruce up for spring  
Complimentary Mary Kay Facial

# Kite's Supermarket

Hours: Mon.-Thurs. 8-8, Fri., Sat. 8-9  
FREE Parking  
FREE Pickup & Delivery

Food Stamp Shoppers Welcome

244-1404

We reserve the right to limit quantities

244-0552

## Turkey Hams

Best Buy

## Sliced Bacon

Curtiss Lite

## Chicken Dogs

Edgemont Fresh

## Sausage

Waynesboro

## Country Ham

Economy Cut

## Pork Chops

Loin End

## Pork Roast

Swift Prem.

## Rib Eye Steak

Full Cut

## Round Steak

Choice

## Shoulder Roast

\$1.59

\$1.29

89¢

\$1.29

\$1.49

\$1.39

\$1.39

\$3.99

\$2.39

\$1.79

Lean All Meat

## Stew Beef

\$1.99

All Flavors

## Coca Cola

2 liter

99¢

Fla. Green

## Cabbage

Fancy

## Bell Peppers

Red

## Grapefruit

Red

## Grapes

39¢

10¢

\$1.59

89¢

Borden American

## Sliced Cheese

Shedd's Country Crock

## Margarine

Martindale

## Yams

Kraft

## Grape Jelly

April Shower

## Peas

Bestway (Golden Cream or W.K.)

## Corn

Campbell's

## Vegetable Soup

Generic

## Toilet Tissue

Maxwell House

## Instant Coffee

Star Kist

## Chunk Light Tuna

\$1.09

\$1.59

79¢

99¢

2/89¢

2/89¢

3/89¢

69¢

\$1.09

69¢