

## ECU Awards Alumni Honors Scholarships To 20 Freshmen

Twenty entering freshmen at East Carolina University have been awarded ECU Alumni Honor Scholarships for the 1984-85 academic year.

The recipients were selected on the basis of high school achievement, Scholastic Aptitude Test scores and extracurricular activities.

This is the sixth year the awards have been given to outstanding beginning students at ECU. The \$750 scholarships are funded by ECU alumni and are renewable for up to eight semesters, contingent upon the recipient's maintaining a high academic grade point average.

Names, parents' names, home addresses and high schools of the scholarship recipients from Craven County are as follows:

**New Bern** - Jennifer Bennett, daughter of Mr. and Mrs. Errol T. Bennett, Bridgeton, graduate of New Bern High School. She plans to major in computer science.

**Havelock** - Shawn Schwarz, whose parents are Mr. and Mrs. Frank W. Schwarz, 115 Paradise Circle. The recipient, whose father attended ECU, plans to major in school and community health.

**PITT COUNTY, Ayden** - Leo Venters, son of Mr. and Mrs. Allen T. Venters, 607 West Haven Drive and graduate of Ayden-Grifton High School. He plans to pursue a major in business.

### Wheat, Securities

Continued from front page

income securities, options, commodities, mutual funds and annuities are dealt in by Wheat, First Securities.

The office will be equipped with the latest telephone and computer controlled terminals for market information and financial analysis.

Bissett is a native of Henderson and has worked with Wheat, First Securities for the past three years. He and his wife Betty have two sons, Harold III age 7 and William age 5.

Other employees of the firm are: William J. Brubaker, Account Executive; Patrick L. Pollard, Account Executive; Randy N. Lovette, Account Executive; Hovey E. Aiken, III, Account Executive; Susan Pace-Gann, Secretary/Receptionist; Lisa A. Wooten, Administrative Assistant.

## Office Personnel District 12 Met

The Craven Educational Office Personnel, District 12, met at Molly's Steak House for their meeting and installation of officers on June 7, 1984.

Bonnie Norman, president, presided and welcomed Miss Ruth Hoyle, Assistant Superintendent of Instruction. Peggy Krofchick gave the invocation.

Miss Hoyle installed the following officers for the 1984-85 year; Bonnie Norman, president; Rosie Miller, vice-president; Audrey Retherford, secretary; Eloise Howell,

treasurer; and Ruby Franks, historian. A very impressive ceremony with different color carnations was used for the installation. The red carnation for the president represents courage; the yellow for the vice-president represents quality; the white for the secretary represents purity; the orange for the treasurer represents honesty; and the pink for the historian represents memory.

Colleen Sadler presented a unique program in honor of the retirees. Each retiree's name

was placed in a square which completed a quilt design to represent the important message of togetherness. The retirees are: Lila Simmons and Shirley Toler from Havelock Elementary, Margaret Bagg from the Craven County Schools main office, Sara Sides from H.J. MacDonald, and Dorothea Buck from West Craven High School. Mrs. Sadler presented each with one of our CEOP pins and a retiree bar.

The next meeting will be August 9, 1984.

## CCC Dean's List

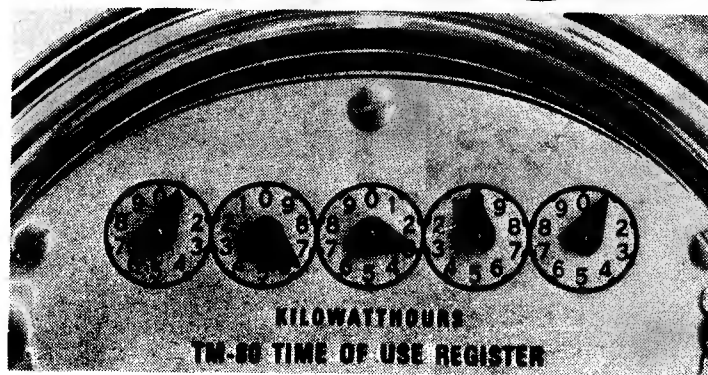
Clifford Swain, Dean of Students at Craven Community College, announces the following students from the West Craven area that were recently named to the Dean's List for spring quarter.

**New Bern:** Donna E. Bryan, William D. Roberts, Miriam S. Sumner.

**Vanceboro:** Steve R. Debrull, Kathryn B. Morton.

**Cove City:** Wendy M. French.

# TIME-OF-USE ELECTRIC RATES. YOU PAY LESS WITHOUT HAVING TO USE LESS.



Here's a way to cut your power bills up to 15%.

And without cutting back on one kilowatt-hour.

Sign up for CP&L's new Time-Of-Use Rates, and we'll install a meter that records not only how much electricity you use, but when you use it.

Then, at billing time, we'll charge you a lower rate for electricity used during off-peak times.

The more things like dishes and laundry you do off-peak, the more you'll save.

## CP&L

*This time of year, off-peak times weekdays are from 9 p.m. to 10 a.m. And all day Saturday and Sunday.*