

# Depth-Laden Pack Strives For Playoffs

Last season, the Washington High School football team came within one game of securing its first winning season and its first playoff berth in five years.

The 1988 Pam Pack attempts to once again aim for the playoffs — except this time, expectations are higher than those of a year ago.

Bob Hanna, who came to Washington last year from Lumberton High School, said he would do everything he could to develop a more positive outlook on Pam Pack football. He seems to have the tools to put together a winning team this season, but he adds, a lot depends on how well the newcomers mesh with the returners, especially early.

"We are definitely way ahead of where we were last season, when we finished 5-5," Hanna said. "We have even more depth than last year but several of the kids we did have played a lot of different positions. This year, we pretty much have decided who'll start and who will back up at certain positions."

Three positions decided during the preseason scrimmages were quarterback, tailback and fullback.

The two quarterback candidates, Brian Jones (6-0, 184, Jr.) and Dwayne Tripp (5-10, 162, Sr.), stayed fairly even throughout preseason drills, Hanna said, but he decided to move Tripp to cornerback to help fill the gap created in the secondary by the graduation of Trey Wiseman, Doug Harvey and E.J. Paszt.

The fullback spot belongs to David Williams (5-8, 153, Jr.). Bryan Reddick (5-8, 153, Sr.) will be the backup. Antoine Ensley (5-10, 176, Sr.), the third candidate,



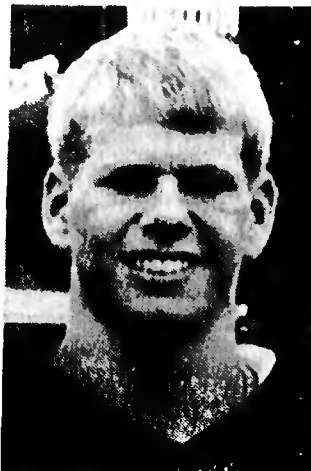
Bob Hanna

was also switched to defense and will play defensive end.

The tailback spot had three players vying for the top spot, but returning tailback Damien Moore, who carried 60 times for 321 yards and five touchdowns last season after being called up from the junior varsity, will be the starter. The other two candidates, Tyrone Lodge (6-2, 186, Sr.) and Darrell Dixon (5-9, 153, Jr.), also played well throughout the preseason, but Dixon got the backup role and Lodge was moved to the other cornerback spot opposite Tripp.

Lodge had two interceptions in the Pack's scrimmage against Bertie last week, one of them for a touchdown. Dixon carried for over 1,000 yards as a junior varsity performer last year.

When the Pack uses two wide-outs, Adam Williams (5-8, 142, Sr.) and Joe Randolph (5-9, 151, Sr.) will start. Randolph, who Hanna



Walt Gerard

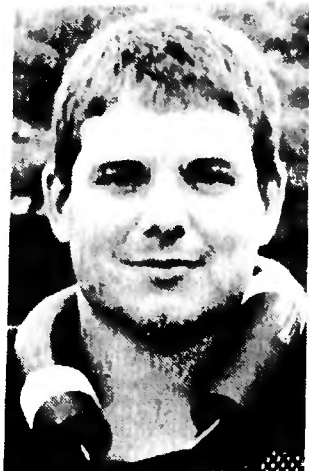
says is the fastest player on the team, was clocked at 4.5 in the 40-yard dash. Brian Floyd (5-10, 152, Jr.) and Tremayne White (5-11, 167, Jr.) are the backups. The split ends are Brian Gorham (6-0, 143, Jr.) and Reid Potts (6-2, 165, Jr.).

Moore and David Williams will man the wingback positions in the Pack's slot offense.

The offensive line returns two starters in guard Greg Smith (6-2, 248, Sr.) and David Boosinger (5-10, 174, Sr.).

Lew Hellickson (5-11, 218) and Mark Sullivan (6-3, 225, Jr.) will also start. Hellickson lettered last season as a freshman and Sullivan started for his high school team in Florida last year as a sophomore, Coach Hanna said.

Backup guards are Brian Kerns (5-11, 186, Sr.) and Charlie Manning (5-10, 173, Sr.) while John Maurizio (5-11, 232, Sr.) is a backup tackle. Derek Curtis (6-0, 201,



William Ragland

Jr.) will be the center.

The tight end position is still open with Chad Thompson (6-0, 183, Sr.) and Ray Pippin (6-1, 219, Sr.) expected to see plenty of action. A third prospect, Charles Littlewood (5-11, 187, Sr.), was switched to linebacker after the Enloe scrimmage.

Hanna said the advantage to having 50 players on the roster is depth. The disadvantage to that depth, he said, is that the starters won't get as much time.

Defensively, the line appears set with David Littlewood (5-11, 178, Jr.) and Timmy Parker (6-0, 198, Jr.) at defensive ends. Robbie McKinney (5-11, 237, Sr.) and Tim Tuck (5-11, 225, Jr.) will man the two tackles and Jeremiah Jackson (5-9, 156, Sr.) will play at nose guard. Hanna said Jackson should be able to frustrate opposing centers with his quickness.

Backups along the Pack's 5-2



Damien Moore

defensive front are Kevin Westbrook (6-2, 198, Jr.), Cordell Moore (6-2, 258, Sr.) and Stephan Whitley (6-0, 218, Jr.).

The linebacking spots are manned by Gary Rumley (5-9, 157, Jr.), William Ragland (5-10, 183, Sr.) and Charles Littlewood (5-11, 187, Jr.).

The one weakness that Hanna detected after the first scrimmage in the secondary, has been improved with the additions of Tripp and Lodge at the corners. The secondary, which is minus two starters from last year, is led by Walt Gerard, a 5-11, 167-pound senior. Gerard, known as "The Hit Man" by his teammates due to his aggressive style of play, returns as the club's starting free safety. Gerard will also back up Tyrone Waters (5-11, 182, Jr.) at strong safety. Under that alignment,

(See PACK, Page 3)



Best Wishes . . .  
to the football teams of  
our area schools for the  
coming season.  
We follow your progress  
and take tremendous pride  
in your accomplishments.

**WE PUT  
THE PRIDE  
IN**  
*Crafted with Pride*



## National Spinning Co., Inc.

**NS** NATIONAL YARN CRAFTS

Supporting Local Schools  
Since 1954

A Division of National Spinning Co., Inc.

