

Frances Avera Is Chosen S. M. S. Posture Queen

Letter Club Sponsors Posture Contest In Assembly, April 4

Frances Avera was chosen 1945 Posture Queen of Saint Mary's in an Assembly Program April 4. Frances is a marshal and, in winning, took top place for the Sigmas in a contest sponsored by the Letter Club. Sgt. Isabelle Hayne, Marine; Sgt. Ann Harris, WAC; Lt. Bayne, USNR; and Capt. Bowman, AUS, judged the contest and chose as winners three Mu and two Sigmas from each class in school. Elizabeth Thomas introduced the judges and announced the events in rhyme, and Bernie White and Margaret Martin, presidents of the two athletic societies, held placards to identify the contestants.

The Sigma contestants were: Frances Avera, senior; Mary Glen Slater, junior; Kitty Taylor, business class; Margaret Norfleet, sophomore; and Virginia Mathews, freshman. The Mu contestants were: Jane Peete, senior; Sally Ann Elliott, junior; Peggy Flippen, business class; Betsy Pou, sophomore; and Kathryn Conn Drew, freshman. The class winners besides Frances Avera were: Mary Glen Slater, Betsy Pou, Kathryn Drew, and Peggy Flippen.

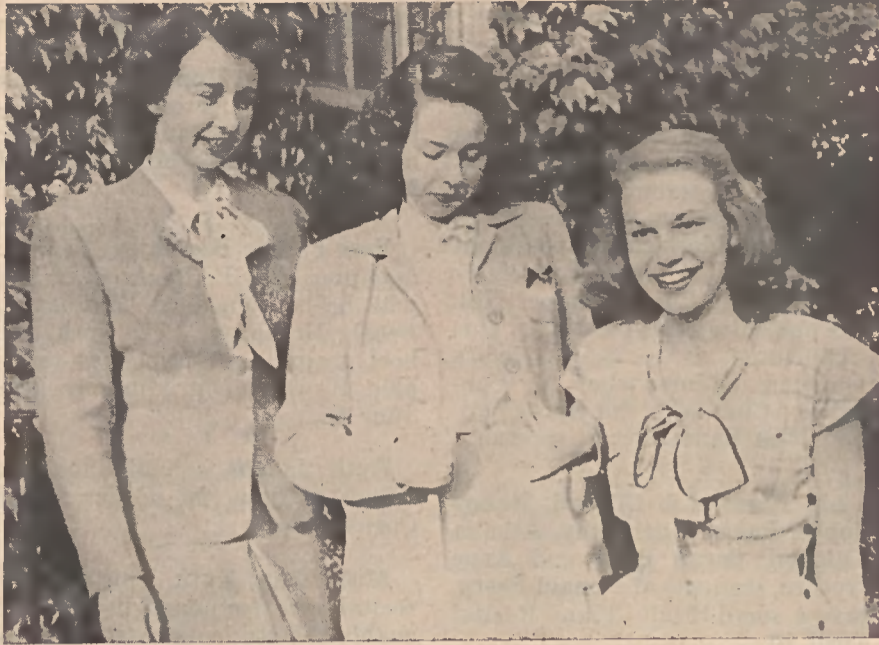
As For Music

There are lots of new records out now and two of the best come from our favorite movies. They're *Laura* by Woody Herman from the picture by the same name ("Laura" not "Woody Herman") with *I Wonder on the back*, and *Sweetheart of All My Dreams* ("I love you, I love you, I love you") from "Thirty Seconds Over Tokyo" by Charlie Spivak with *Yip, Yip, De Hootie, My Baby Said Yes* on the first. Incidentally, the first is a Columbia recording while the last has the Victor label on it.

"C-a-n-d-y" is one of the most heard words at S.M.S., partially as food but partially as the song. We like the Les Brown-Capitol recording and Dinah Shore's Victor recording of it; the former has *I'm Gonna See My Baby* and the latter has the new favorite, *He's Home For a Little While* on the back.

If catchy songs are your specialty as well as Fred Fletcher's, try Gertrude Niesen's Decca disk of *I Wanna Get Married* and *Twelve O'clock and All Is Well*. But if you lean towards Frankie, just listen to *I Begged Her* with *What Makes the Sunset?* and *If You Are But a Dream* with *White Christmas*. Both are by Columbia. There's another recording of *If You Are* etc., by Jimmy Dorsey with *Full Moon* on a Decca disk.

Further recommendations: *Just a Prayer Away* and *All of My Life* by Kate Smith (Columbia), *Just a Prayer Away* and *My Mother's Waltz* by Bing Crosby (Decca), *Twilight Time* and *Sentimental Journey* by Les Brown (Columbia).



STUDENT PUBLICATIONS' EDITORS FOR 1945-46. Sally Ann Elliott, editor of the *Belles*; Jane Campbell, editor of the *Stage Coach*; and Mary Pinckney, editor of the *Bulletin*, pose on the steps of Holt where they will live next year.

SOPHOMORE SUZIE

Gee, but spring fever is really hitting me. I'm so-o-o-o sleepy, and I just don't think I can ever look at another book. Anyhow, spring is the time when a young man's fancy turns—but why doesn't one turn to me. The only consolation is that men just aren't plentifully available any more, and it's hard to date V-mail. Tuck and some others are going to feel pretty desolate when Class 11 leaves State next Wednesday. Another group of diesel-ensigns have come and went.

This manpower problem really needs a lot of—of—of something. Oh, I mean consideration or something like that. They all seem to be "either too young or too old." Mary Butler was with Jackie Stoughton at the girl-break last week, and Jean's ("he's only five years younger than I am") Huske was dating Ann Cutt's little brother. Then there are at least two seniors over in Holt that are quite taken by men many years their seniors. Incidentally, all of these seniors are really worried about whom to ask

(From P. 1, Col. 2)

places from Florida to Indiana to New Jersey and back again. "Just another Army brat, you know," she explained. As a result of so much moving Mary changed schools too much to ever really settle down, but she did eventually graduate from Dreker High School in Columbia. This year Mary has "settled down" not only to thrilling us with her unique stories in the *Bulletin*, but as a member of the E. A. P. Literary Society, Publications Staff, and as Hall President. When interviewed, the "Slim" of Third Floor Smedes was at a slightly peculiar angle washing her hair but she managed to say between rinsings, "It was the fastest election I was ever in, . . . and I loved it."

Sally Ann Elliott of Washington, North Carolina, was elected as Editor of the *Belles*. Sally Ann attended Washington High School where she was editor of the school paper during her Senior year. While

to the Junior-Senior. It's quite a problem: not "whom to ask?" meaning which one, but "isn't there anybody I can ask?" *C'est le guerre, M'selles.*

Miss Lalor's Wild Flower Garden hasn't got a thing on 209 Holt; there's a real, live baby avocado pear tree up there. Just go look and see, if you don't believe me.

We women are so fickle. Just this week, I heard every single senior raving about some man named Tom Jones (Navy, no doubt,—or was that John Paul?), but now for the past two days I haven't heard one single soul even mention his name. Wonder what he did and where he went?

Here I go just rattling on, and I really haven't a thing to say. It's time for my daily nap, or maybe I'll go write a six cent air mail letter. Did you know that Miss Brown says that there are almost as many red stamps sold as the usual three cent purple ones? But it's right, 'cause the least we can do is write.

at Saint Mary's she has been on the Publications Staff, a member of the Sigma Lambda Literary Society, and has served as a Junior Dance Marshal. When interviewed Sally Ann looked up from her typewriter and grinned, "Please don't ask me about any elections. I'm writing some up now for the *Belles*."

Ginger Young of Dunn was elected yesterday as Editor of the 1945 *Handbook*. Ginger attended Dunn High School where she was President of the Hi-Y Club and a member of the Beta Club. This year she has worked on the Publications Staff and has been appointed to the Canterbury Club Council for next year.

Calendar Of Events

April 13—Annette Fulton's Expression Recital

April 13—Sigma Pi Alpha Banquet
May 22—Junior-Senior Dance

At the Theaters

(April 13-27)

AMBASSADOR

- 13-17 *Meet Me in St. Louis.*
J. Garland, M. O'Brien.
18-21 *A Tree Grows in Brooklyn.*
L. Noland, J. Blondell,
D. McGuire.
22-24 *Tonight and Every Night.*
L. Bowman, J. Blair,
R. Hayworth.
25-28 *Between Two Women.*
V. Johnson, L. Barrymore.

STATE

- 13-14 *Hangover Square.*
L. Cregar, L. Darnell,
G. Sanders.
15-16 *What a Blond.* T. East.
17-18 *She's a Sweetheart.*
L. Parks, J. Darwell.
19-21 *Nothing But Trouble.*
Laurel and Hardy.
22-24 *Molly and Me.* M. Wood,
R. McDowell, S. Fields.
25-27 *Main Street After Dark.*
E. Arnold.

PALACE

- 13-14 *Purple Heart.* D. Anderson,
Roger Touhy, Gangster.
P. Foster, V. McLaughlin.
15-17 *Double Exposure.*
C. Morris, N. Kelly.
18-19 *Meet Me in St. Louis.*
AMBASSADOR prices.
J. Garland, M. O'Brien.
20-21 *Utah.* R. Rogers.
Chapter 1: *Zorro's Whip.*
22-24 *A Tree Grows in Brooklyn.*
D. McGuire, J. Dunn,
J. Blondell.
25-26 *Tonight and Every Night.*
R. Hayworth, L. Bowman,
J. Blair.
27 *Margin for Error.*
They Came to Blow Up
America.
Chapter 2: *Zorro's Whip.*

WAKE

- 13-14 *Falcon Out West.*
T. Conway.
Big Noise.
Laurel and Hardy.
15-16 *I'm From Arkansas.*
S. Summerville.
17-18 *Uncertain Glory.*
P. Lucas, E. Flynn.
19-20 *Marine Raiders.*
P. O'Brien.
21 *Curse of the Cat People.*
Allergic to Love.
22 *Canterville Ghost.*
M. O'Brien, C. Laughton,
R. Young.
23-24 *'Til We Meet Again.*
R. Milland, B. Britton.
25-26 *The Great Moment.*
J. McCrea, B. Fields.
27-28 *Music of Manhattan.*
Storm Over Lisbon.

CAPITOL

- 13-14 *Saddle and Sagebrush.*
R. Harper.
15 *Wild Horse Valley.*
B. Sterle.
16-17 *Here Come the Waves.*
B. Crosby, B. Hutton,
S. Tufts.
18-19 *Seventh Cross.*
S. Tracey, S. Hasso.
20-21 *Great Stage Coach Robbery.*
W. B. Elliot.
Black Arrow.
22-23 *Trouble Busters.*
All Star Cast.

VARSITY

- 13 *A Star Is Born.*
J. Gaynor, F. March.
14 *The Uninvited.*
R. Milland, R. Hussy.
15-16 *Follow the Boys.* D. Shreve.
17 *North Star.* A. Baxter.
18 *Gaslight.*
I. Bergman, C. Boyer.
19-20 *Greenwich Village.*
D. Ameche, C. Miranda.
21 *Mr. Winkle Goes to War.*
E. G. Roging.
22-23 *Wing and a Prayer.*
24 *Step Lively.*
F. Sinatra, G. Dehaven.
25 *One Mysterious Night.*
26-27 *Blond Trouble.* M. Roomer.