

THREE CHEERS
FOR PEPPER

The Belles

OF SAINT MARY'S

FIVE DAYS
'TIL VACATION

Vol. XII, No. 5

RALEIGH, NORTH CAROLINA

November 18, 1949

Legislative Members Select New Officers

Body Elects Wilson, Huske, To Lead In Opening Meeting

Members of the Legislative Body elected Alice Wilson, chairman, and Rosalie Huske, secretary, at the first meeting, on October 26.

Alice, a senior from Thomasville, is a member of the *BELLES* staff, *Bulletin* staff, senior representative for the Legislative Body, and the Y.W.C.A. She is also a swimming instructor and a Mu.

A senior, Rosalie is from Fayetteville. She is president of the senior class, a hall counselor, secretary of the Circle, and a member of the Canterbury Club. She is a Sigma.

The purpose of the meeting was for organization. Aurelia Fulton read the reports of last year's Hall Council, Honor Council and Legislative Body. The meeting was then adjourned.

CLASS REPRESENTATIVES

This year's Legislative Body is composed of the various class representatives, the class presidents, Barbara Wooten, president of the Student Government Association, and Franky Allen, handbook editor.

Senior representatives are Alice Wilson, and Rosalie Huske, president of senior class. The junior class is represented by Stella Cobbs, president of junior class, and Ann Nicoll and Mickie Shannon, representatives. The sophomore class representatives are King Risley, president of sophomore class and G. B. Kennedy. Sally Dalton represents the freshman class. Mary Anne Gray and Mary Anne Hartzog are business class members of the Legislative Body.

Meredith Smothers SMS In 3-0 Hockey Match

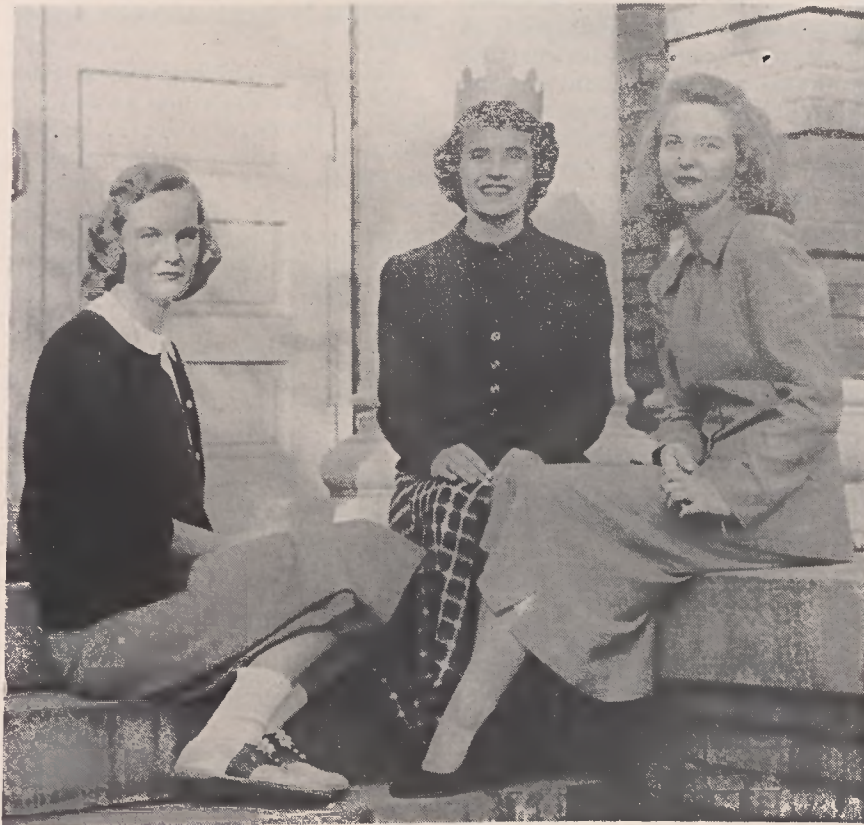
Saint Mary's and Meredith met in a hockey match on Friday, November 11, on the athletic field. Meredith captured the game with a score of 3-0.

Meredith scored once in the first half and twice in the second. Nichols, center forward, made the first two goals; Francis, left inner, made the last goal.

After the game the Letter Club served refreshments in the gymnasium to members of both teams.

The members of the Meredith team were: House, Massey, Nichols, Francis, Clatt, Fitzgerald, Hodges, Dula, Schuler, Yeatts, and Cannady. The coach was Miss Phyllis Cunningham, physical education instructor at Meredith.

Members of the Saint Mary's team were: Rachel Cozart, Sylvia Mar Ragland, Betsy Brown, Alice Hicks, Ann Shuford, Cynthia (See P. 4, Col. 4)



Louise Milliken, Posture Queen of 1949, is pictured above between Mary Ruth Ruble on the right, runner-up for the title, and Betsy Brown, president of the Letter Club, who crowned the queen. The contest, which is sponsored annually by the Letter Club, was held in assembly on Thursday, November 10.

YWCA Sponsors Campaign at SMS For European War Orphan Care

Saint Mary's student body and faculty are being canvassed to support the Foster Parents' Plan for War Orphans, Inc., this week. This plan, which is being sponsored by the Y.W.C.A. for the student body, makes possible the adoption of war orphans by people in the United States.

The adoption is mainly financial (\$180 for one year), but the "foster parent" has direct contact with the child through letters and pictures. A history of the child is sent to the "foster parent" along with instructions about mailing letters.

CARE FOR CHILDREN

The money which is put into this plan gives the child food, shelter, clothing, medical care, schooling, and instruction in the religion of his parents. In many cases children have lost arms or legs in the war; the money needed to pay for artificial limbs is supplied by the war orphan's plan. Plastic surgery and artificial eyes are also paid for by this fund.

The Foster Parent's Plan is a non-profit relief organization and has given help to more than 60,000 children in its twelve years of service. The plan is now helping 7,000 children of fourteen different nationalities; headquarters are in nine countries. Every child accepted into the plan is carefully investigated and is cared for according to his individual need.

Among the noteworthy people who are sponsors of this plan are: Herbert Hoover, Kay Kyser, Fredric March, Mary Pickford, Will Rogers, Jr., and many others. A number of schools and universities in both the North and South have adopted war orphans.

CANVASSING COMMITTEE

The campaign at Saint Mary's will be conducted by the officers of the Y.W.C.A. with the help of a committee which will canvass each hall. The officers of the "Y" are: Sylvia Newson, president; Betty Ann Williamson, vice-president; and Frankie Strosnider, secretary-treasurer. Serving on the canvassing committee are: Lucy Ann Boddie, Laura Hayes, Gloria Farnell, Kathy LeSturgeon, Jane Nesbit, Pearle Buchanan, Eunice Bizzell, Margaret Gaston, Frances Corleto, Alice Hicks, Alice Wilson, Margaret Wilkins and Katherine Holmes.

ADVERTISEMENT COMMITTEE

Betty Bowles is chairman of the advertisement committee. This group will make and distribute posters around school. Members of the committee include: Shirley Crenshaw, Mary Ann Clegg, Anna Jane Owens and Clairene Harris.

Circle Taps Four In Honor Ceremony Of Midnight Walk

Society Picks Gaither, Brown, Bowles, Dawson As Members

Jo Gaither, Betty Bowles, Suzanne Dawson, and Betsy Brown became members of the Circle on Tuesday night, November 1. The Circle is an honorary society at Saint Mary's composed of outstanding girls; membership is limited to twenty. Four seniors were tapped for this honor the night the Circle walked, making the total number of Circle members eleven.

Jo Gaither is from Charlotte, and this year she is secretary of the student government, president of the Canterbury Club, vice-president of Sigma Pi Alpha, and a member of the Honor Council, Altar Guild, and Granddaughters Club. Jo is a Sigma.

Betty Bowles is from Statesville, and this is her fifth year at Saint Mary's. She is editor of the *Bulletin*, a marshal, and a member of the Sigma Pi Alpha, the Letter Club, and the Y.W.C.A.; she is a Mu.

Suzanne Dawson from Cramerton, is the chief marshal. She is a member of the *Stage Coach* staff, the Letter Club, the Canterbury Club, the Altar Guild, and she is a Mu.

Betsy Brown from Baltimore, Maryland, is president of the Letter Club, a member of the Canterbury Club, a Hall counsellor, and she is a Sigma.

The officers of the Circle this year are: Lucile Best, president, Rosalie Huske, secretary, and Suzanne Dawson, treasurer. Suzanne was elected at the first meeting of the Circle after installation of new members.

Senior Class Announces Plans For Annual Dance

The Senior Class has announced plans and committees for the annual senior class dance to be given December 10 in the Saint Mary's gymnasium. There will be twenty-five pages and servers attending in addition to the seniors.

The figure committee chairman is Binny Chew, and Brookie Craft and Mary Smith are on her committee.

The decoration committee is made up of Lillian Hill, Lila Rousseau, co-chairmen; Heilig Harney, Ann Badger Smith, Patty Starr, Cynthia Davis, Betty Bowles, Bert Russ, "Skeelie" Wilkins, and Eliza Chipley. Ginny Anne Landis, chairman, and Mary Scarboro are the orchestra committee.

Olivia Lynch is the chairman of the refreshment committee and her helpers are Frances Elder, Jean Wranek, Lib Suiter, and Julia Scott.

(See P. 4, Col. 1)