

# The Belles

OF ST. MARY'S

VOL. XXX, NO. 9

RALEIGH, NORTH CAROLINA

March 10, 1967

## Granddaughters Honor Relatives With a Tea

On Wednesday afternoon, March 1, the members of the Granddaughters' Club of St. Mary's honored their mothers, grandmothers, and friends with a tea from three o'clock until five o'clock in Smedes' Parlor.

In addition to the honored guests, the faculty of St. Mary's was invited to attend the tea. The guests enjoyed talking with many of their friends whom they had known at St. Mary's while the members of the 1966-1967 Club served punch and coffee, luncheon sandwiches, mints, and nuts.

The Welcome Address was given by Miss Arabella Nash, President of the 1966-1967 Granddaughters' Club. Miss Jane Augustine, the Alumnae Secretary, introduced Mrs. W. Grady Stevens, the President of the Alumnae Association. Mrs. Stevens gave a short address on the history and purposes of the Granddaughters' Club.

The Musical Program began at four o'clock. Miss Hutton Kent, accompanied by Jeannette Holt, played two pieces on the flute. Susan Carrison, Virginia McSwain, and Laura Walter played selections on the piano.

Sarah Chamblee and Dottie Nahikian each sang one solo. Finally, the Vocal Ensemble, under the direction of Miss Geraldine Cate, sang several numbers.

This is the first time that the Granddaughters' Club has given a tea such as this one, and it should be noted that three generations of St. Mary's ladies were present at the tea.



Anne Harney and Clarine Pollock Serve Tea at Granddaughters' Occasion.

## MARY HOLDEN HARRELL ELECTED AS SGA PRESIDENT FOR 1967-68

The Student Government elections began this week, when Mary Holden Harrell was elected as president for 1967-68.

She and Bobbie Bell were nominated from the committee. From the floor Cheryl Lee and Alice Smith were nominated.

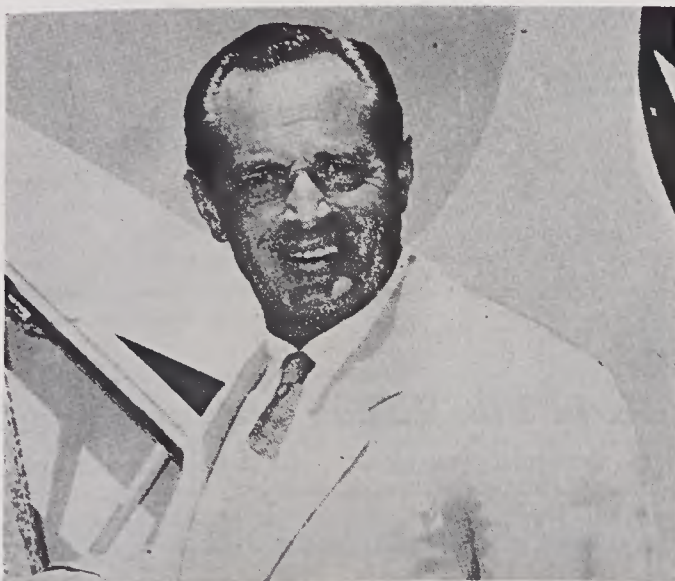
Miss Harrell is a New Girl from Snow Hill, North Carolina. While attending Green High School, she was president of the Junior Class, a member of the House of Representatives, and captain of her cheerleading squad.

Next year, as president of the SGA, she will serve as Chairman of the Honor Board. She will also serve on the Hall Council, Legislative Body, Disciplinary Committee, and

the Counselor Committee. The president works closely with the Dean of Students almost every day. Being President of the SGA is a ten-point job, according to the handbook.

The members of the nominating committee are: Chairman Lucile McKee, Jane Patrick, Nancy Smith, Bidy Ager, Barbara Conrad, Nelson Glass, Nell Fleming, Ann Pollard, Mary Holden Harrell, Ann Brady, Frances Gordon, Susan Hutaff, Gray Brothers, Sue Miller, and Susan Byars; Margaret Stevens presides.

These committee members meet twice a week to discuss the various candidates for these offices. The Chairman of the Hall Council will be announced tonight, unless there is not a run-off.



## Mr. Geza De Rosner Will Lecture on the Inca Empire

On Monday, March 13, at 8:30, Mr. Geza De Rosner will present a lecture and film—"The Saga of the Inca Empire".

In preparation for this lecture, two assembly programs were given. The first was given by Mrs. Stoops and Mr. Nichols. In their program, they called attention to two early American civilizations, the Mayas and the Aztecs, which together with the Incas, were the victims of Spanish Conquistadors.

The second assembly program was given by Miss Haig and Mr. Bill Siddell. A record, "The Virgins of the Sun God" was played. Ima Sumac, who claims to be an Inca princess, sang the song. (Most of the program was of European music, including an outstanding event when "Greeting Cards" by Mario Castelnuovo-Tedesco was performed publicly for the first time in the United States by Miss Haig and Mr. Siddell.)

Geza De Rosner was born in Hungary. He was educated in Budapest, Vienna, Paris, and the United States. He was a representative of Hungary in various international sports. He still is a tennis player, skier, skin diver, and participates in many other sports.

He has lived in the United States since 1937. He served as a pilot in the Air Force in the Pacific during World War II. Among the titles attributed to him are world traveler, explorer, author, philosopher, lecturer, sportsman, motion picture producer, writer, director, cameraman, and editor.

During his program, De Rosner will show his color film "Saga of the Inca Empire". It presents "new concepts which will greatly influence the presently accepted image of the medieval American Indian". It tells of the religion, the government, the

(Continued on page 4)

## New Tennis Club Members Chosen

Five new members were taken into the Tennis Club recently. These girls were selected after they had played several times with the old members. They were picked according to ability, spirit, and potential since they will form the center of the next tennis team.

The new members are: Susan Slover, a junior from Tampa, Florida; Ann Blackburn, a junior from Henderson; Keith Richardson, a junior from Greensboro; Connie Johnson, a sophomore from Fuquay; and Cathy Cline, a freshman from Raleigh.

These five girls with the eight old members will play in several matches with other colleges in the area. Tentative matches have been arranged with Meredith, Peace, Carolina and other colleges.

## Sophomores Sell Sandwiches Next Friday Night

The Sophomore Class will have its first Sandwich Sale next Friday night in Lower Smedes. They will be selling grilled cheese and peanut butter sandwiches at twenty-five cents apiece.

The food will go on sale at approximately 9:30 p.m.

All proceeds will go to the sophomores' gift to the school which is presented at the end of the year.

## Flicks of the Future

Village: "Hotrods to Hell"  
Varsity: "Covenant with Death"  
Ambassador: "Dr. Zhivago"  
State: "A Fistful of Dollars"  
Colony: "A Man and a Woman"



Miss Haig and Mr. Siddell Perform.

com-

fairs.  
oth in  
and in  
rolina,

Mary's  
ed Dr.  
st dat-

ersonal  
job is  
aduate.

really  
but I  
teach-  
hly en-  
of St.

ns

Play

II

ted for  
duction  
at St.  
To be  
Father-  
produc-  
"The  
ful mu-  
nishing  
eir love  
1920's,  
asic and

lead is  
portray-  
en Rose  
s of the  
abonnet.  
school-  
y Lena  
ters in-  
h Ann  
Bryan;  
Davis;  
(friend)  
also in  
a Bittle  
igh ta  
choru  
ected  
mu  
Bulley  
Dra  
ce pr  
ecret  
ar.