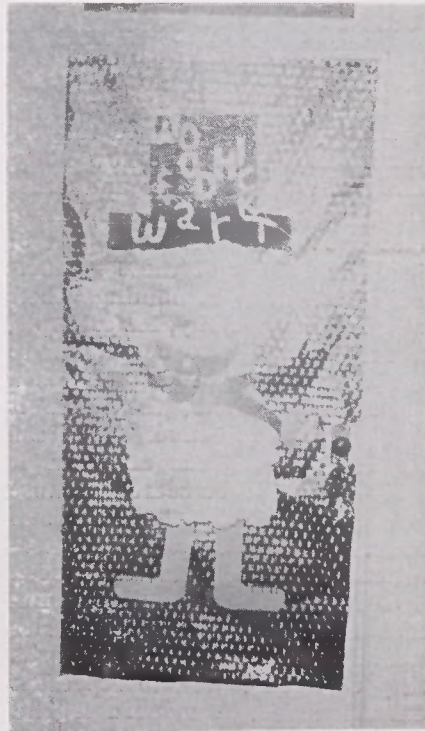




Freshman Christmas party is liveliest of all.



Pam and Ann help promote Christmas spirit in Cruikshank.



Decorated doors add to Christmas spirit.



Santa Doris is getting ready to deliver her gifts.

CHRISTMAS SPIRIT AT ST. MARY'S

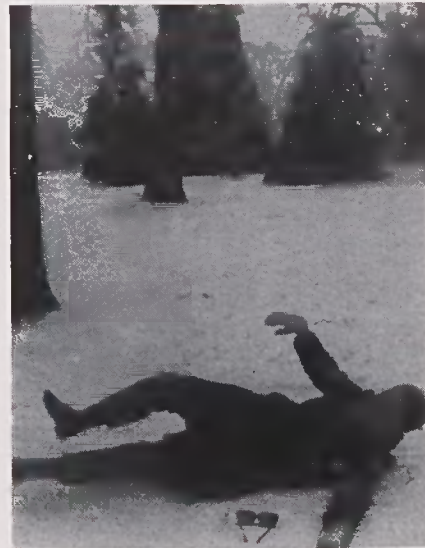
By Cynty McAlister

St. Mary's is one of the first places each year to catch the Christmas spirit: it hits us fast and hard. The annual Raleigh Christmas parade triggers this enthusiasm, and from that time on decorations go up, presents are bought, Christmas carols are sung, and studying becomes impossible! Each day till vacation is marked off on a calendar, and our thoughts are primarily centered on going home for more than just a few days.

The old St. Mary's tradition of giving presents to our peanuts provides much excitement: re-

ceiving poems and gifts from our secret shell is looked forward to each day. The Circle-Beacon Christmas party featuring Santa is one of our favorites. We all enjoy the Glee Club concert the night before we go home.

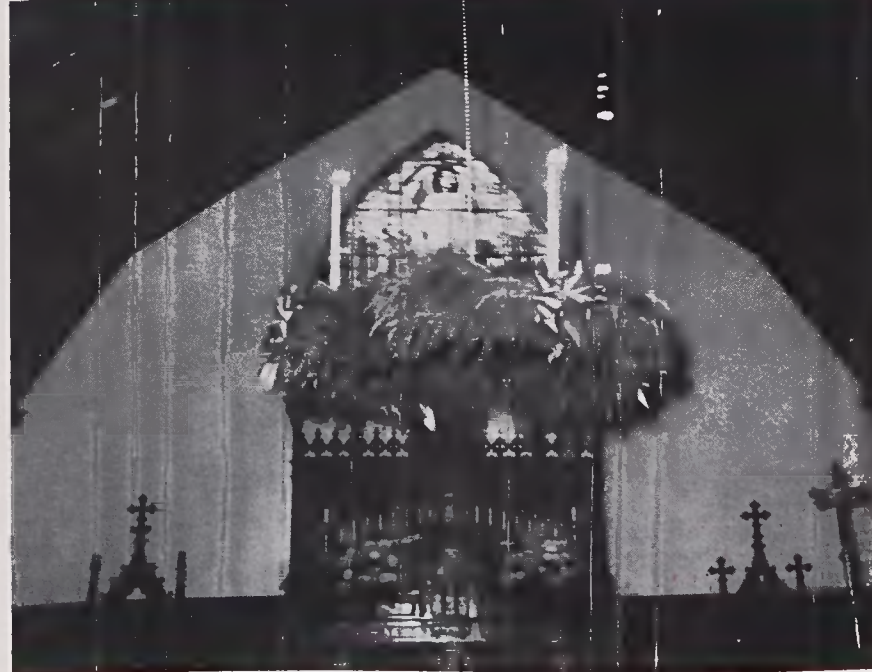
The bulk of Christmas spirit here at school comes from the girls themselves. Everyone is in a good mood, which can sometimes be disastrous for the teachers when it comes to classes. Christmas carols can be heard all over the campus, sung in every place from the showers to the dining room. The Christmas bug is everywhere.



I'm dreaming of a white Christmas.



Christmas worship is centered in our chapel.



their com-

affairs. both in c and in Carolina, 's. t. Mary's nted Dr- past dat-

personai y job is graduate. ne." "I really , but I up teach- oughly en- of St.

ans Play

, II ducted for production n at St. 9. To be f Father- ll produc- on's "The htful mu- finishing their love he 1920's, music and

e lead is o portray- aren Rose ess of the Dubonnet. y" school- by Lena acters in- igh Ann ar Bryan; net Davis; boyfriend) ; also in- eca Bittle aleigh ta- he choru irected th mu- l Bulle- he Dra- vice pr- secret- Cather- arer.