



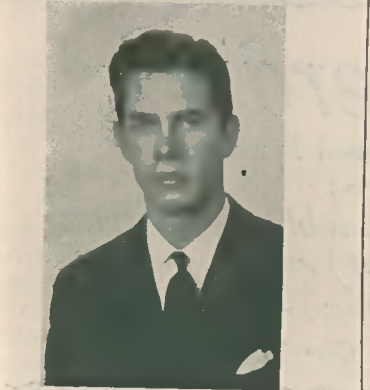
Temple on



Tate



Wall



Summey

Lest We Forget

"Honor thy father and mother that thy days may be long upon the land which the Lord thy God giveth thee." Exodus 20:12.

Tomorrow we students of Mars Hill are going home for the Christmas holidays. What are we going to do? What do the holidays have in store for us?

Perhaps we are now thinking of that swell get-together with the old gang. Or it could be that we are looking forward to seeing "that one and only." Then again we could be thinking of those parties which all of us plan to attend. But what about Mother and Dad? Has each one of us made a place for them in our coming vacation?

If you have read this far, and I do hope you have, you probably are thinking, "Well, Mr., my mother and dad know that I love them; so why should I take part of my vacation to tell them about it? After all, I have only two weeks, and I'm not going to be able to do half as many things as I should like to do."

If you feel this way about it, let me ask you a favor. Take off one minute and finish reading this editorial; and, while you are doing so, think of Mother and Dad. Can't you see them sharing your joys and sorrows? Can't you see them sacrificing everything to make it possible for you to come to school? I say that you can.

I think that we realize the hardships they are undergoing for us, but have we told them, or are we letting them take it as a matter of course. They are doing everything in their power to send us, their sons and daughters, away to school so that we may work and attain the goal we have set. And the only reward that they want is to see us make a place for ourselves in the world.

Think about Mother and Dad and during the holidays show them how much you appreciate them. Forget about the gang for one night and stay at home with them. They will always remember when their Tom or Mary came home for Christmas. They will never forget those comments you will make about Mars Hill, the wonderful teachers, the Christian atmosphere, and last, just how much you do appreciate the sacrifices they are making.

I say, "Students, spend a night with Mother and Dad, and ten years from now when you are reminiscing about your Christmas holidays at Mars Hill you can say, "That was one great year back in 1938. I shall never forget the long talk I had with Mother and Dad."

—O. B. C.

Christmas Pageant Given by Dramatic Club Saturday

A Christmas pageant, "He Also Serves", was presented to a large audience in the Mars Hill college auditorium Saturday evening.

Members of the cast were of the dramatic club of the college and were under the direction of Miss Bonnie Wengert, head of the expression department.

Shepherds, pages and wise men took part in the pageant and each portrayed his part extremely well, rendering a very effective impression on the audience.

The last scene portrayed the adoration of the wise men and shepherds for the Christ as they knelt around the manger with

(Continued on page 3)

Charles Taylor Is Elected Philomathian President Recently

Friday night, December 9, marked the close of another chapter in this year's history of the Philomathian literary society, for on that night new officers were elected to succeed those officers who served the society during its recent anniversary. Succeeding J. E. Tate as president was Charles Taylor, of Defuniak Springs, Florida, who will serve with David Hooks, new vice-president, for the third term on the society calendar.

Other officers who were elected were: E. R. Higgins, recording

(Continued on page 5)

Euthalians Elect Officers For Term

Setting the pace for the annual society elections, the Euthalians literary society staged an election, December 7, and elected Robert L. Murphy, of Newport News, Virginia, to succeed Charles B. Summey, as president. Others elected along with Murphy were: Willis Bennett, vice-president; Bill Baucom, secretary; Jack Carter, censor; James Kirk, chaplain; Jay Moore, collector; Calvin Stringfield, English critic; Bill Angell, debate critic; Kays Gary, expression critic; Billy Hearn, pianist; Bill Griffin, chorister; John Owens, timekeeper; J. R. Evans, Bill Kyles, janitors; and Levy Barco, reporter.

Mary Fowler Is Elected President Of New Dormitory

To further the social life in Edna Corpening Moore dormitory, the girls of that dormitory met recently and elected dormitory officers as follows: Mary Fowler, president; Beth Alexander, vice-president; Miriam Pinnell, secretary; and Ada Wall, social chairman. The purpose of this move was to create a more congenial relationship so that the girls may know one another better and to enjoy social occasions within the dormitory.

The first of a series of such planned events took place in the lobby and kitchenette of the dormitory last night when the girls conducted an enjoyable social hour together.

Sixty Students Plan To Participate In Student Night

Typical Program Given In Chapel Friday Morning —Last Year 49 Took Part

What? Student night at home. When? Christmas night. Where? Home church. Why? To tell our homefolks about Mars Hill. Who's going to take part? We are.

Student night this year will be more important to Mars Hill students than it has ever been before. It will be a golden opportunity for each of us to show the members of our home church just what progress we have made here at college and at the same time tell them about the B. S. U. work here on the campus.

(Continued on page 3)

Non Reception Is Staged For Eu's

A colorful program with a Christmas theme characterized the annual reception given the Euthalians by their sister-society, the Nonpareils, under the direction of President Ada Wall, in the two society halls recently.

The downstairs of the Robert Lee Moore hall was so arranged as to represent a moonlit woods at Christmas with a winding path leading through frosty pines upstairs to the society halls. At the entrance to the hall was a typical home scene with the family stockings hanging over the fireplace. Santa Claus (Orville Campbell) greeted the visitors and members of the society there.

In the Non-Eu society hall a Christmas tree with amber lights, black and gold candles in the windows, gold stars, pine branches and cones carried out the idea of Christmas in a typical way.

The Clio-Phi society hall presented a scene of ice and glitter. A tree, frosted white and with blue lights and icicles, silver stars and a chandelier of white and silver bells gave a Christmas atmosphere.

(Continued on page 3)

47th Anniversary Acclaimed A Success

On a stage decorated to represent an enlarged replica of the symbol of the Euthalian literary society, the Euthalians presented a program in the college auditorium celebrating their 47th anniversary with President Charles B. Summey, Secretary Roger Bell, and Censor Orville Campbell, presiding. The program presented represented a typical society program.

As the program opened the Euthalians and their sister society, the Nonpareils, sang the "Euthalian Hymn", written especially for the occasion by John Ball.

After the Euthalian hymn, Paul

(Continued on page 4)

Glee Club Presents Impressive Program Last Sunday Evening

Fifty-One Students Take Part In Christmas Candle-Light Service

Beauty — cannot describe it; words — cannot express it. But those who were present acclaimed it one of the most impressive Christmas candle light services ever presented in the college church.

Under the direction of Miss Elizabeth Ellison and accompanied by Miss Martha Biggers, the college glee club and string ensemble presented their annual Christmas program to a large and appreciative audience Sunday at the regular evening service.

As the program opened, members of the glee club marched into the church each carrying a lighted candle. To give the audience the spirit of the occasion, the girls wore white and each of the boys was dressed in a dark suit.

Rev. William Lynch, pastor of the college church, led the opening prayer and throughout the

(Continued on page 5)

Tate Introduces New Plan In Societies

Friendship at last! Yes, at last great strides are being made toward a material as well as implied friendship between the Euthalian and Philomathian literary societies.

There has been a noticeable amount of growing friendship this year between all students on the campus, and the societies have done much to contribute to its progress. These changes are being brought about by constant improvements through new ideas and more powerful individual and concerted initiative.

In an effort to cast aside all petty rivalry and individual hard feelings, the two societies recently adopted an idea originated by J. E. Tate, former president of Philomathians. The plan provides

(Continued on page 5)

IT WON'T BE LONG NOW!

Only twenty-four more hours 'till the "bus and train will carry us there." Now of course you all know where "there" is, because for the past month you have been counting the days; now it's a matter of hours, and soon a small number of minutes until you will be HOME for Christmas vacation.

Classes are going to be cut short on Friday, so that everyone will be out of school by 10 o'clock, eliminating the need for cutting any. Since President Blackwell has been nice enough to let us out a day or two earlier than any of the other schools in this section, please consider it your duty to attend your classes tomorrow morning.

You may be a little late in getting home to see the folks but one thing is certain: you stayed until you were supposed to go. Thanks.

Pictured above are those who did such a fine job in leading the four societies on the campus during the anniversary programs. They are Rachel Templeton, president of the Clios; J. E. Tate, president of the Philomathians; Ada Wall, president of the Nonpareils; and Charles B. Summey, president of the Euthalians.