

## Focus Week Theme, Coordinator Chosen

Planning for Christian Focus Week, which is scheduled much earlier this year than last, has already begun. The dates of the special emphasis week are 7-11 Nov.

It was announced early this week by Beverly Cansler, who is a general co-chairman of Christian Focus Week, that Dr. Elmer West of the Mars Hill Baptist Church has accepted the position of overall co-ordinator.

A theme for the week was decided last Monday night. It is to be "Raison D'Etre."

Themes for Christian Focus Week in recent years have been exciting and thought-provoking. The theme last year was "Christianity and a-go-go," and was preceded by "Quo Vadis?"

All essential committees have been formed and have begun work. The volume of work to be done has necessitated a large number of committees and personnel.

The Program Committee is headed by Paul Early and Carol Campbell. Serving on the Hospitality Committee as co-chairmen are Luther Rickenbacker and Maxie Rayford.

Co-chairmen of other committees are: Classroom Committee, Tom Denton and Margaret Hardin; Spiritual Preparation Committee, Ray Frazier and Lynette Vaughn; Books Committee, Charles Dewese and Becky Bergen; Evaluation Committee, Jim Kessar and Kitty Haigh, Seminar Committee, Martha Morris and Ron Aldridge; Dorm Discussions, Ralph Magee and Sally Spaulding;

### Candidates

(Continued from p. 1)

Hill Pep Club. A committee is now working on a theme for the parade. The athletic and music departments have set up a reviewing committee to approve all floats for the parade.

A Senate nominating committee led by Jim Kessar recently chose seven members from the student body to serve this year on the Student Activities Committee. Those chosen are Scott Samuels, David Foster, Ralph Magee, Carol Campbell, Malcolm Privette, Peggy Jo Smith, and Beverly Cansler. The duties of this committee are to work with the administration in choosing movies, speakers, etc., and in planning other activities for the student body.

The Senate plans a bus trip to Emory and Henry College 22 Oct. Price of tickets for the game will be subsidized by the Senate and the individual classes will subsidize the cost of their members' bus tickets. In years past, the student trips to away games have always been a highlight in the school year according to Ralph Epperson, head of the trip committee. He is hoping that as many as 300 students will participate.

A newsletter to be published by the Student Government Association is anxiously anticipated by the students, reported Tommy Denton, head of the newsletter committee. A letter of this type would be an asset to the organization and would help further cooperation between our leaders and the masses and would certainly give an added boost to school spirit and class unity, he added.

Publicity Committee, Malcolm Privette and Janis Elam; and Music Committee, Bill Rotan and Mary Rome Rector.

Christian Focus Week brings to the campus some outstanding Christians from a variety of vocations. There is a great deal of student participation on committees, in seminars, conferences, interviews, and mass meetings.

## Dramateers Stress Technique

The Dramateers are planning a busy year, according to David Jones, president. The program emphasis is on learning rather than on entertainment as in the past.

Demonstrations of technical points such as acting techniques, scenery, etc. are in store. One-act plays involving club members will be utilized. A lecture on behind-scenes television production is also in the making.

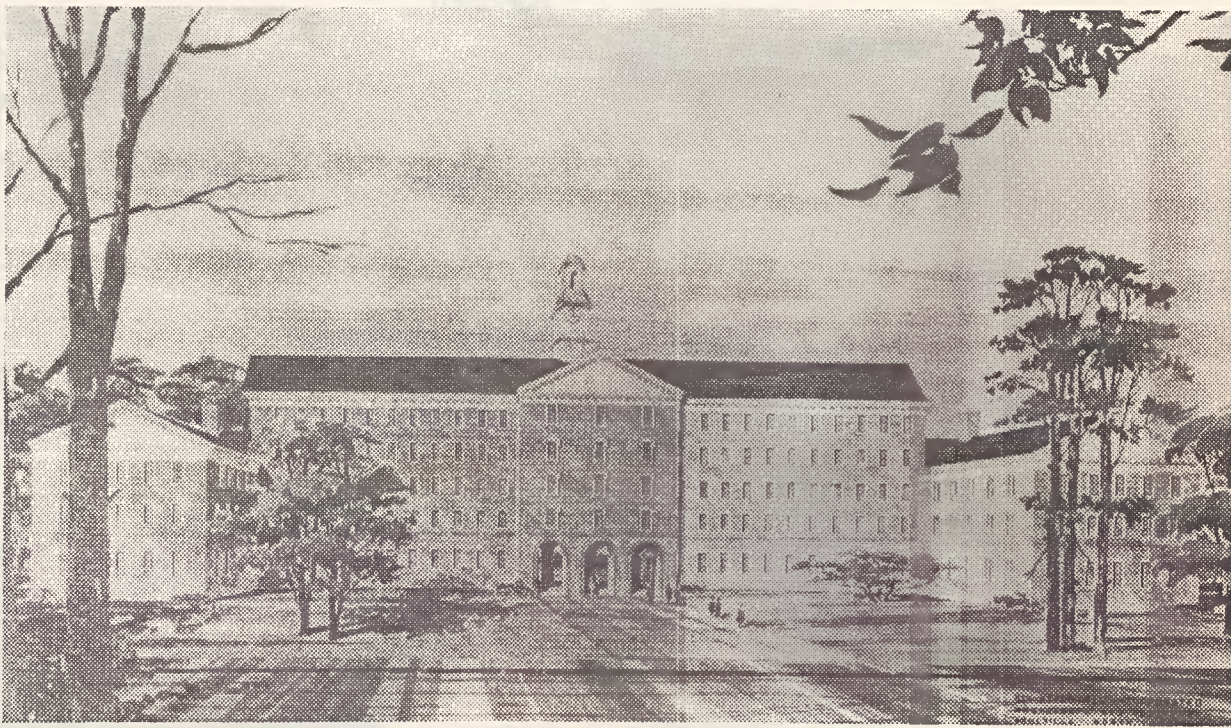
Next semester, the Dramateers hope to obtain Dr. Alfreds Straumanis, director of the Asheville Community Theater, as a guest speaker. Although plans are now indefinite, the club hopes to take a field trip toward the end of the year.

## Hill Heads New Committee

Denny Hill, chairman of the newly-formed Social Action Committee, clarified this week why the BSU formed the committee.

"This committee has chosen to point out the action and give our students a chance to get into the life of acting instead of looking and listening."

"This year's BSU believes that the expression of life, maturity, people, education, recreation, and commitment in the Christian context needs to be seriously considered by all students. BSU is not an exclusive organization and is concerned that students have a better understanding of its nature and intentions. It is earnestly trying to identify with the cause of Christ and to engage all students who want to share in this purpose," was the statement given by Paul Campbell to further inform students of this ac-



## Excellence Is Building's Chief Purpose

Picture the Blackwell Building towering over the campus from a strategic position at the center. It is an attainable dream!

Much has already been said about the proposed combination classroom-administration building, and more will be said as the school year progresses. It is not, however, just another new building in the continuing enlargement of the college. It is a means

toward an end.

Think of the Blackwell Building, says Dr. Fred Bentley and his staff, in terms of its usefulness. Think of how its facilities will assist in the achievement of excellence. Don't think of it just in terms of size, shape or location.

The proposed structure will contain space and equipment for a modern data processing center, including a computer. This facility will enhance both the teaching program and the records-keeping activities of the college.

A functional, well-equipped communications laboratory will help faculty members in modern languages, English and speech to teach more effectively.

Visualize a modern 500-seat lecture hall—not just another auditorium—and you can see the usefulness of another feature of the proposed building.

The need for additional classrooms is well known around the

campus. Here again the usefulness of the proposed Blackwell Building is obvious. It will alleviate crowded conditions in the various teaching stations on the campus and allow for future growth.

Equally well known on the campus is the shortage of offices for faculty members and the need for centralized and modern administrative offices. The proposed building is being planned to provide these facilities and meet this need.

"It's obvious," said one faculty member recently, "that the emphasis of the new college administration is on persons and on excellence. I suppose that is why it seems better to talk about the proposed Blackwell Building in terms of its intended usefulness rather than merely in terms of its physical characteristics. After all, what will count will be its contribution to the achievement of excellence."

## MARS HILL SODA SHOPPE

Open 7 a.m. - 11 p.m.

and

## CAMPUS CORNER

Open 8:30 a.m. - 8 p.m.

CLOSED SATURDAY & SUNDAY

Sundries Short Orders Regular Meals

Telephones 689-6353 or 689-4396

## O. V. HOWELL & CO.

Authorized RCA VICTOR Dealer

Solid State Stereos Clock Radios Televisions

All Latest RCA Albums and Records

T.V. Lead-In Line—Special . . . 2c foot

GUARANTEED RADIO, TV, and WATCH REPAIR

Main Street

689-3705

Mars Hill

Regular \$1.49	CANTRESE HOSE	88c
Regular \$2.49	PANTY HOSE	\$1.59
Just Wonderful	HAIR SPRAY	2 Cans \$1.16
Carton	CIGARETTES	\$1.99

## MARS HILL PHARMACY

## ROBINSON'S READY TO WEAR

Features

The Complete Lines of

JEAN CASTLE CO-ORDINATE SETS  
THE GIRL FROM C.H.I.C. CO-ORDINATE SETS  
TEENA PAGE DRESSES  
SHIP 'N SHORE BLOUSES

also

PANTS & SHIRTS  
FOR THE MEN