



Mars Hill College

Hilltop

cooperation . . .

communication . . .

understanding . . .

progress.

XLV, No. 14

MARS HILL, NORTH CAROLINA

Saturday, April 24, 1971

Future of Proposed Student Union Depends Upon Trustees' May Decision

by Gayla Green

The proposed construction of a new student center and a new classroom building to replace the facilities now being used in McConnell was the main topic of discussion by the Building and Grounds Committee of the Board of Trustees and the Finance Committee last week. The full Board of Trustees in its Dec. 1970 meeting, had authorized Dr. Bentley to proceed with preliminary planning for these two proposed buildings.

Scaled models of each building were prepared by the college's architectural firm, Six Associates of Asheville, showing the proposed floor plans and shapes of the two buildings. These models were available for the members of the two trustee committees to inspect and discuss last week.

The proposed student center is to be constructed south of the cafeteria, between the Science Building and the football stadium. This will require tearing down the white house next to the cafeteria driveway and Landers Cottage.

This week the proposed student center was recommended to the Executive Committee of the Board of Trustees. If approved by that committee the plans will go to the full board at its May 15 business session.

If the full board gives the final approval to the plans the college will advertise for bids on the project. When the bids have been received and properly reviewed the contract will be awarded and construction will begin, hopefully during the coming summer. It is estimated that construction will take approximately two years. The cost of the building with its furnishings is anticipated to exceed \$1 million.

The Student Activities Staff and officers of SGA had opportunity to participate in the preliminary planning for the new student center as the offices for the two groups will be housed in the new structure. The new building will also provide facilities for student publications, a coffeehouse, and the college bookstore. The student center facilities will include the student post office, snack bar and lounge facilities, recreation area (pool table, ping pong, etc.), television rooms, etc. As is now planned there will be an open patio facing the football stadium. A small auditorium is also planned in the total facilities. In addition there will be conference and seminar rooms and several areas for informal student gatherings. Quite a bit of glass is to be utilized in the building and there are some interesting and exciting views to be had out the west side of the structure.

A special feature of the new building will be ramps which will make the various floors accessible to handicapped persons. The first-floor level, which will face the football stadium, will have access at the level of Athletic Street, which now runs beside the stadium. The

second-floor level will have on-grade access from the other side of the building, the side facing eastward, toward McConnell and the center of campus.

In outward appearance the new buildings will blend nicely with its "neighbors" the cafeteria and the

science building. It will be veneered in red brick with limestone or poured-in-place concrete trim.

All in all, it should be a highly functional, free-access building with an atmosphere inviting students to utilize and enjoy the various facilities.

Pay Now; Laurel Later

Distribution of the 1971 Laurel will begin Thursday or Friday, according to Judy Tallman, editor.

Keys Printing Corp. of Greenville, S. C., printer of the book, notified the staff last week that binding operations should be completed Wednesday and the shipment delivered either that afternoon or Thursday morning.

Distribution will be handled by the Laurel staff from the Laurel-Hilltop-Cadenza offices in the Montague Building. Only students who have paid their college bill or who have made arrangements with the Business Office to settle their accounts will be eligible to receive a copy.

Eligibility will be certified by the Business Office by the distribution of a special card to students whose accounts are settled. This card must be presented to Laurel staff personnel in order to receive a copy of the book.

If you have not received your

card by Wednesday morning, April 28, it will probably mean that your account is unpaid and you should check with the Business Office. Library fines due, infirmary charges, traffic tickets, room damage charges and other such miscellaneous charges constitute part of the total account for which satisfactory arrangements must be made before one of the special entitlement cards is given.

Cards for eligible commuters who do not have a box in the student post office will be distributed by U.S. mail.

No copies of the '71 Laurel will be issued from the Montague Building for other than students. Faculty and staff members who wish to purchase a copy may do so through the bookstore. College offices which wish a copy for office files must request them through the bookstore and have them charged to their account.

Radio Station Airs Things Out

by Ed Sams

New renovations planned for the MHC radio station include new and wider selections of radio programs and a new budget proposal for next year.

A new list of programs for station 232 includes Silhouette, a Methodist Church sponsored program of religious music; Powerline, a similar program sponsored by the Baptist Church; and Dialogue. Dialogue is a new hour long talk-show broadcasting every Tuesday night at 7:30 in which campus figures come on the air and answer questions called into the station by students on the spot besides following the shows regular format. One guest speaker on the program has been Danny Ray, and it is hoped that others in the near future will include Dr. Fred Bentley and Mr. Don Caldwell.

John Foster, station manager of 232, submitted to President Bentley a proposal which allows an appropriated budget of \$980 and that all bookkeeping will be handled by the college business office.

Changes this semester have included also a wider scope of ads which are now solicited from Asheville as well as the Mars Hill area. (With the station's new package deal

of selling 80 thirty-second ad spots for \$15 and the budget appropriation, the managers hope to be able to buy one new piece of broadcasting equipment each year.)

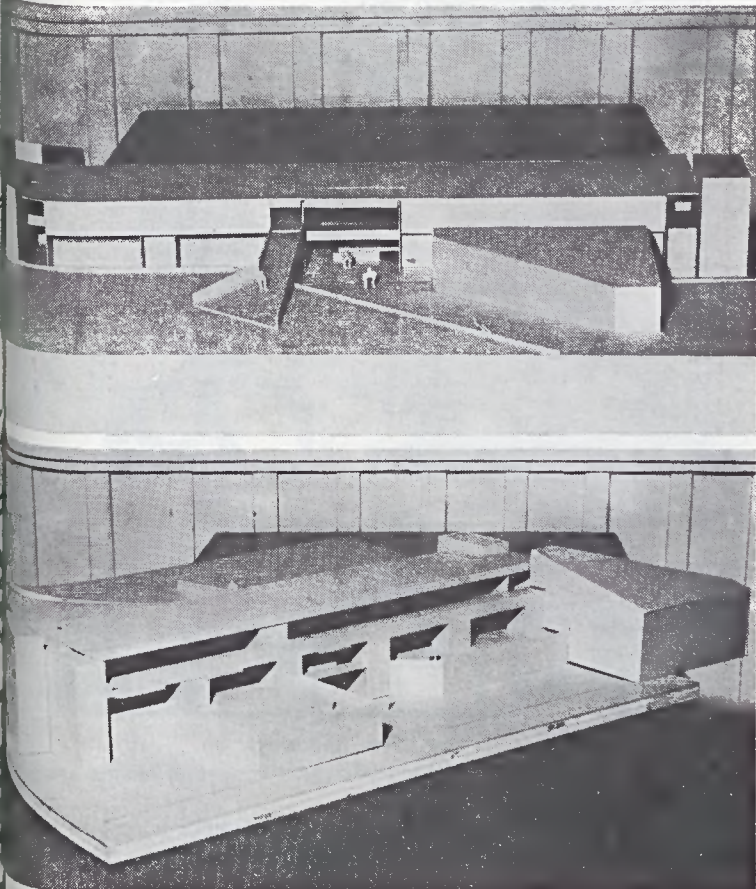
Other ideas still on the drawing board are a "favorite teacher" contest and a fund raising drive for an operation on "Dammit," resident dog on campus.

Through a recent poll it was found that 85% of the students listen to 232 and 30 to 40% listen nightly. According to Paul Rood, sales director, "The station, given a chance and a little backing from SGA, can be a bigger voice than ever to the MHC students."

One new show started by station 232 last Tuesday, April 20 is the Mike O'Brian show with disc jockey Karl Brady as MC of the platter session which offers the top 100 songs of the national chart. Songs such as "We Can Work It Out" by Donnie Osborne and humorous "quickies" make up this lively program that broadcasts every Tuesday and Thursday from four to six.

The Hilltop Topper

Inflation is so bad the Mafia had to lay off three judges.



— east side of the building, facing central part of the campus; little triangular projection in the right foreground is area for student publications (including photography) on second floor level and coffee house on second floor level; actually, what appears in the foreground is ground level is second floor, and another level (below it) opens out on the side of the building. The ramp in the center will give handicapped persons easy access to the third floor of the building where the SGA and student affairs offices will be located.
— west side of the building, fronting on Athletic Street and facing the football stadium; the projection in the center foreground represents a patio (with tables, chairs, etc.) which will be adjacent in the snack bar. This patio will be one story above Athletic Street. A rectangular projection on the right represents a medium-size auditorium. The three floors of the building may be distinguished in this view.

Faculty Appointments Named

by John Ulmer

Richard Hoffman, Vice President for Academic Affairs, has announced more of the new faculty members. There are only two positions in Modern Language which have a vacancy.

Larry Stern, who is currently teaching at Florida State University, will join the political science department. He has five years teaching experience along with several research articles in publications.

Donald Anderson, who received his doctorate from the University of Chicago, will join the biology faculty. Dr. Anderson has been chairman of the Social Service Department at Eureka College, Illinois, since 1965.

Larry Foster, who will receive his Ph.D. from the University of North Carolina at the end of the summer, has recently been employed in the Department of Physical Education. In addition to his teaching duties, he will be responsible for developing a Physical Education Laboratory which will handle all phases of the physical education program.

Brenda Cummings, who received her M.A. degree from the University of North Carolina at Chapel Hill, will join the home economics faculty next year. Miss Cummings has been teaching at the University of Mississippi and is a graduate of Mars Hill College.

Theresa Metcalf, University of Georgia, will join the department of education next year. Miss Metcalf has been working toward her

doctorate for the last two years.

Miss Lou Therrell, who is working on her doctorate will rejoin the education department.

Miss Bierbaum has been awarded the chairmanship of the home economics department. She is currently doing part time work on her doctorate.

Food Service OK'd.

The MHC Cafeteria will be administered by a food management service beginning June 1. Epicure Management Services, Inc., of Rock Hill, S. C., will provide 21 meals per week on a 14-week cycle of menus.

Service will also include a multiple choice menu featuring five salad choices, three entrees, two vegetables, three breads, four desserts, and five beverages. Unlimited servings will be offered Monday through Fridays on each item with the exception of steak. Both continental and hot breakfasts will be offered. A salad table and hand-dipped ice cream will be provided at lunch and dinner.

Ten festive meals, to be planned by a committee, will be served each year. Special diets, when prescribed by a doctor, and professional catering will also be provided. Continuous service is planned to begin spring semester of next year.

The food service will not cost the College any more than the current system.