

New Fords; New Dealer Announced

Simultaneously with the announcement of the appointment of the Nash Motor Company as new Ford dealers for Roanoke Rapids, comes the news of two new V-8's for 1938. The new models are on display at the showrooms of the new dealer, located on Roanoke Avenue at Ninth.

Nash Motor Co. succeeds Thompson Motor Company as Roanoke Rapids Ford dealers and recently moved to the garage building formerly occupied by them. The company is headed by G. H. Nash, veteran automobile dealer.

Nash Motor Co. will also sell Lincoln Zephyr models, and will offer a complete stock of parts and accessories for the line of Ford cars.

Ford V-type 8-cylinder cars for 1938 went on display yesterday in Ford dealer showrooms throughout the United States. They are offered this year as two distinct lines, differing in appearance and price. Both are in the lowest price field.

One is a newly-styled standard Ford line, in coupe, Tudor and Fordor body types, powered either with the 85 or the 60 horsepower V-8 engine. The standard cars are designed to meet requirements of the many motor car owners, whose means dictate maximum economy in first cost, as well as in maintenance and operating costs.

The other is a newly-designed de luxe line for owners who desire additional style and appointments. Powered only with the 85 horsepower V-8 engine, the line includes eight body types, the coupe, Tudor and Fordor sedans, as well as the club coupe, convertible cabriolet, club convertible cabriolet, convertible sedan and the phaeton.

The two lines of cars have the same improved V-8 chassis, but their styling is distinctly different.

The de luxe cars are larger in appearance. The hood has been lengthened. Its nearly vertical front is carried in a "V" well down into the radiator grille, with the familiar V-8 emblem at the tip of the "V". Horizontal lines of the grille bars and the louvres are echoed in a bright rustless steel band which is carried along the belt to the rear.

The new standard line cars also present a larger appearance with a newly-designed front end, grille, hood and fenders. The front end is formed in a "V", with the horizontal grille bars extending unbroken along the hoodside to form the louvres.

Fenders in both cars are massive, formed lower to provide more complete coverage of the running gear and extending farther back. Headlamps are again recessed in front fender aprons, new type tail lamps in the tips of rear fenders.

Interiors of the two cars are roomy and attractive, styled in keeping with the exteriors. The de luxe sedan interiors are larger.

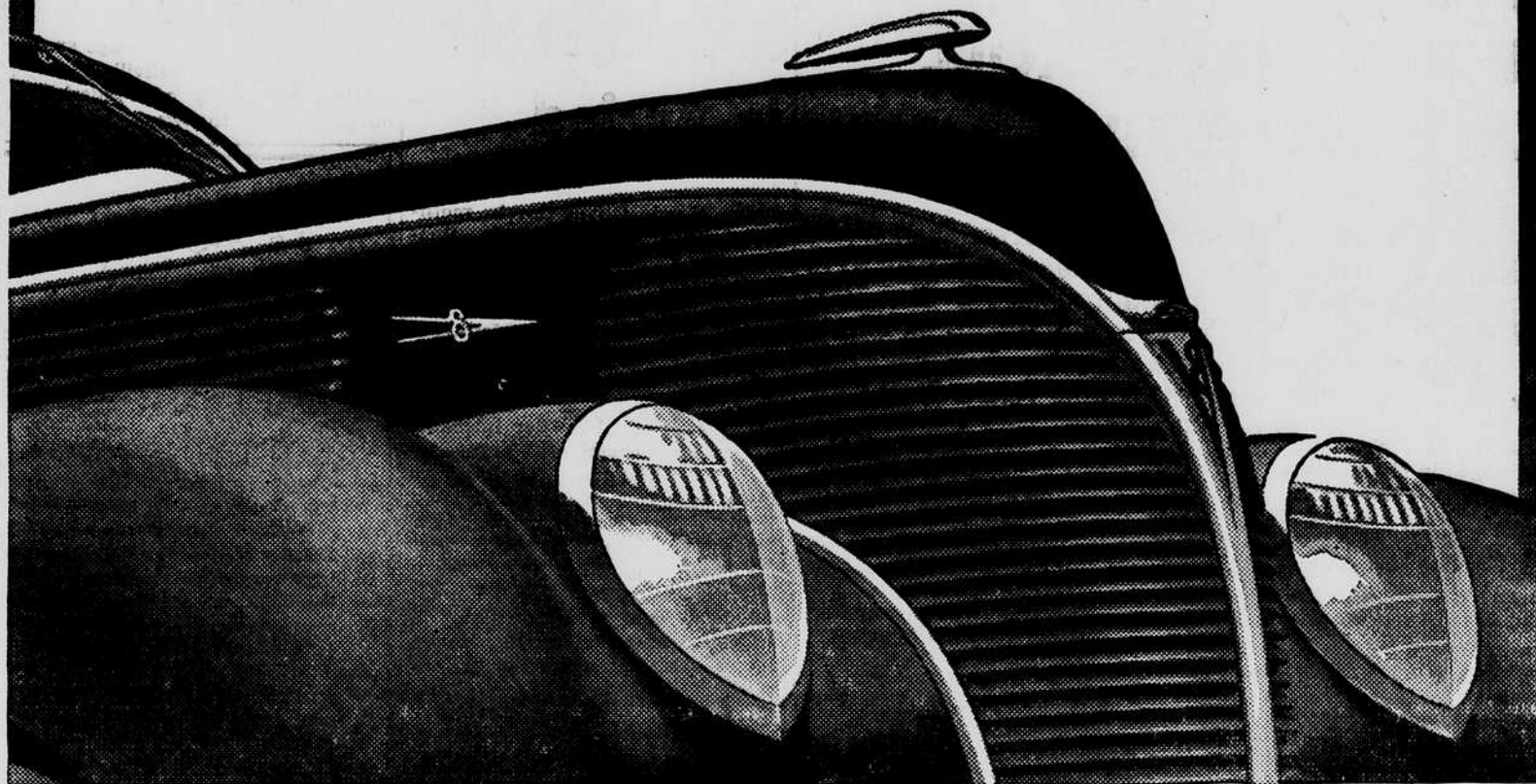
FUNERAL OF MRS. LYNCH

Funeral services for Mrs. Sidney Lynch, 28, who died at the Roanoke Rapids Hospital Wednesday, Nov. 24th, at 3 o'clock, were held at the home of her mother, Mrs. Maggie D. Floyd at Ankum, Va. Thursday afternoon. Interment followed in the family burying ground. She was a resident of South Rosemary.

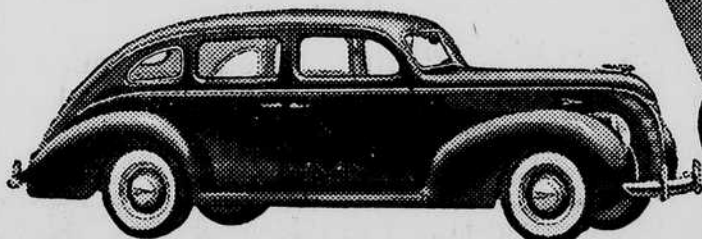
Surviving are her husband, Sidney Lynch, 2 daughters, Hazel and Alese Lynch, her mother, Mrs. Maggie D. Floyd, 3 sisters, Miss Florence Floyd, Mesdames Richard Clary, Ervin Conner and 2 brothers, Ernest and Beaman Floyd.

The flower girls were: Misses Frances Lassiter, Lillian Riggins, Elmira Sanderford, Ellen Taylor, Mrs. Samuel Clary, and the pallbearers were: Miles Clary, Dorsey Wright, Roy Mohorn, Samuel Clary.

Announcing TWO NEW FORD V-8 CARS FOR 1938

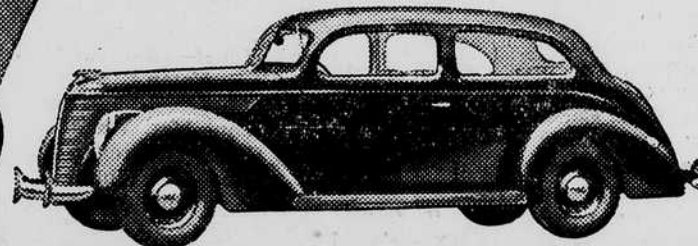


THE DE LUXE 85 HORSEPOWER



DE LUXE FORD V-8 . . . 112" wheelbase; 85-horsepower engine; Improved Easy-Action Safety Brakes; Center-Poise Ride; All-steel body; Mohair or Broadcloth upholstery; Walnut-finished trim; Twin horns, tail lights, sun visors; Clock; 6.00" black tires, white side-walls are extra; 8 body types; 6 colors.

THE STANDARD 60 OR 85 HORSEPOWER



STANDARD FORD V-8 . . . 112" wheelbase; 85 or 60 horsepower engine; Improved Easy-Action Safety Brakes; Center-Poise Ride; All-steel body; Broadcloth or Mohair upholstery, Mohair extra in "60"; Mahogany-finished trim; One tail light, sun visor; Twin horns; 3 body types; 3 colors.

FORD offers two new cars for 1938—the Standard Ford V-8 and the De Luxe Ford V-8. They are different in appearance—but built to the same high standard of mechanical excellence—on the same chassis.

Because people liked our 1937 car so well, they bought more than of any other make. They liked its looks, its smooth performance, and the way it handled. We have improved on that car in the newly styled Standard Ford V-8.

But some folks wanted still more size and style, with the same Ford advantages. For them, we designed a new De Luxe line.

The De Luxe Ford V-8 Sedans are longer with more room, larger luggage space, and finer appointments all around.

De Luxe cars are equipped with the 85-horsepower engine only.

The Standard is even lower priced than the De Luxe. It has graceful new lines and well-tailored interiors—with a choice of engine sizes—85 or 60 horsepower.

Before Ford made V-type 8-cylinder engines available to every one, they were used only in expensive cars. Since then, four million Ford owners have learned the genuine enjoyment of driving an eight-cylinder car with all-around economy. The thrifty "60" engine, especially, makes possible in Standard models a very low first cost and equally low operating cost. With two distinct designs, two engine sizes and two price ranges, you'll find a 1938 Ford car to fit your needs exactly.

PRICES FOR CARS DELIVERED IN DETROIT—TAXES EXTRA

Standard Ford V-8 (60 hp.)—Coupe, \$599; Tudor, \$644; Fordor, \$689. Standard Ford V-8 (85 hp.)—Coupe, \$629; Tudor, \$669; Fordor, \$714. De Luxe Ford V-8 (85 hp. only)—Coupe, \$689; Tudor, \$729; Fordor, \$774; Convertible Coupe, \$774; Club Coupe, \$749; Convertible Club Coupe, \$804; Phaeton, \$824; Convertible Sedan, \$904.

Standard and De Luxe cars equipped with bumpers, bumper guards, spare wheel, tire tube, tire lock and band, cigar lighter, twin horns, and headlight beam indicator on instrument panel, at no extra charge.

In addition, De Luxe cars are equipped with extra tail light, windshield wiper, sun visor; also de luxe steering wheel, glove compartment lock, clock, and chrome wheel bands, at no extra charge.

NOW ON DISPLAY AT
ROANOKE RAPIDS'
NEW FORD DEALER

Nash Motor Co.

Roanoke Avenue at 9th

Roanoke Rapids, N. C.