

# Drive To Start: CHEST CAMPAIGN TO BEGIN MONDAY



## THE ROANOKE RAPIDS HERALD

CAROLINA'S FIRST TABloid NEWSpaper



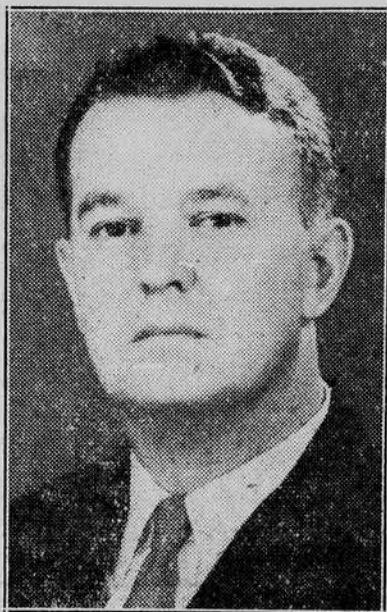
VOLUME TWENTY-SEVEN

ROANOKE RAPIDS, N. C.

THURSDAY, OCT. 9, 1941

NUMBER 11

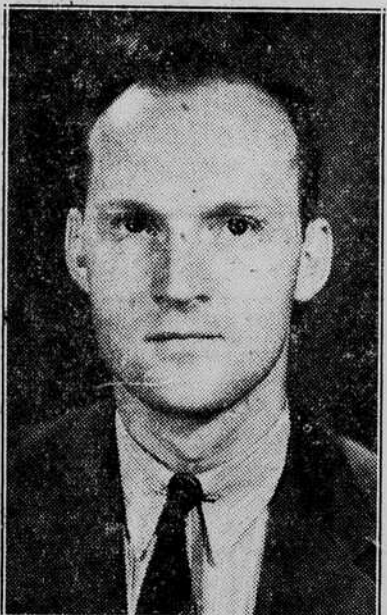
### Leaders In Drive



FRANK SHERRY



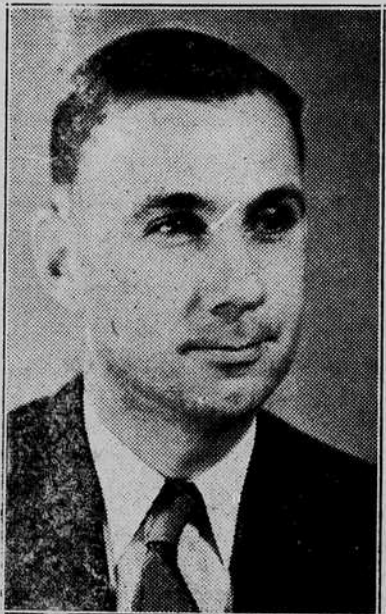
H. S. LOY



T. R. WILSON



T. B. SPEIGHT



W. L. MEDLIN

Leaders in the Community Chest drive for funds here next week are: Frank Sherry, president of the Community Chest; E. H. Graves, chairman of the campaign for funds; H. B. "Ted" Speight, publicity chairman; H. S. Loy, Colonel of the general gifts division; T. R. Wilson, Colonel of the industrial gifts division; W. L. Medlin, Colonel of the special gifts division.

# BOARD CONSIDERS -AIR PORT- HALIFAX COUNTY

## APPOINT NEGRO HOME AGENT IN HALIFAX COUNTY

## ACTION IS NOW PENDING

### To Help Colored Farm Women with Home Problems

Another worker will be added to the County Farm Extension Agency on October 10. Dazelle F. Lowe, Negro District Home Agent, announced that Ruth V. Whitworth of Bricks is appointed for the position as Negro Home Demonstration Agent in Halifax County.

The new Home Agent comes to the county with much experience in teaching home economics and working with rural people. She was transferred from the Home Economics Department of Beaufort County Negro High School to Bricks NYA Training Center by the State Department of Public Instruction to coordinate the National Youth Administration work with the State Educational Program.

Through community organizations, Ruth Whitworth will help farm women with their home problems such as food conservation, food preparation, house furnishing and home sanitation. She will also assist D. J. Knight, Negro County Agent, with the 4-H Club Work and take charge of the girls' home-making projects. Both agents will cooperate to help launch the "Million Dollar Educational Program Among Rural North Carolina Negroes" which has been instituted by the State Extension supervisors.

### 60 DAYS

Highway Patrolman H. W. Rothrock has been transferred from duty here to Huffman, about 12 miles from Rockingham, for 60 days.

The local patrolman was sent to the new location for service during the Army maneuvers in that section.

### PICKED



Miss Angelia Hardy, attractive daughter of Mr. and Mrs. E. Cecil Hardy of this city, has been picked by the local Merchants Association to represent Roanoke Rapids at Edenton's first Peanut Festival on October 16-17. The 17-year-old blonde will compete with a number of other girls from Eastern North Carolina in a beauty contest for the title of "Peanut Queen".

### VICTIM

Deputy Sheriff Jack Whitehead, jailer at the county jail at Halifax, can handle unruly prisoners with little trouble—but he was unable to fight off an attack by Ol' Man Appendicitis last Sunday. He was taken to the Park View Hospital at Rocky Mount, and at last reports was getting along nicely after an operation.

Deputy James Mountcastle of Weldon is handling the jail situation while Jailer Whitehead is indisposed.

Possibility that Halifax County will have an airport constructed near Roanoke Rapids looms today, but depends upon whether the County Board of Commissioners is willing to gamble from \$1,000 to \$1,500 on the proposed project.

A delegation of local citizens, headed by J. Winfield Crew, Jr., appeared before the board in session at Halifax on Monday for a discussion of the matter.

Crew, spokesman for the delegations, told the Halifax Commissioners that Roanoke Rapids has been approved as a "defense area" because of the manufacturing industries and dam for electric power, and that it may be possible to get the government to build a Class III airport near the city.

All possible sites in the county have already been given preliminary surveys, Crew stated, and a 292-acre tract of land situated about a mile from Roanoke Rapids has been selected as the best possible location of the proposed airport, which will be of the second-best type available.

The spokesman for the group stated that the site has been approved by the Civil Aeronautics Authority and WPA engineer, representatives of the two Federal agencies which will be asked to construct the air port.

However, the county must furnish the land and engineering fees on the project. The proposed site is owned by Crew, who stated that it would be sold to the county at any price offered by the commissioners.

The county was asked to appropriate a sum to get engineers started on a survey map of the tract. The government will have to know how many trees must be moved, how much grading will have to be done, and answers to many other questions a survey would provide.

The survey, Crew stated, would be the first concrete step toward securing the airport, and the re-

(Continued on Page 12, Sec. A)