

ROD & GUN

By GENE WIKE
(N. C. Division of Game and Inland Fisheries)

COVERING THE WATERFRONT

Aycock Brown, sportsman-writer about Morehead City, foresees improved salt water fishing in vicinity of derelicts which fell prey to the submarines around "torpedo-junction" during the war. He hopes the government or somebody will make charts available to skippers of sportsfishing boats so that guides can take their parties out to the ships wrecked along the coast.

Fishing over wrecks is nothing new, he says. The British tramp steamer, Thistleroy, a cotton laden ship which foundered on Lookout Shoals five or six miles southeast of Cape Point prior to the first world war, has been a favorite fishing spot for the past two or three decades. It was here that the first sailfish were taken with rod and reel by anglers of Morehead City and Beaufort. So, sometime soon we'll drop down to "splice the main-brace" with brother Brown and "shivver the timber" over some of the prize places he's picked out.

HIGH AND DRY—

John D. Findley, North Carolina Game and Fish Commissioner, came back from the North American Wildlife Conference which convened in New York recently with an alarming note about Dr. Ira N. Gabrielson's prediction of drought cycle immediately ahead. "If it's all true, and we don't doubt the Doctor's word, the continental population of waterfowl will experience a resultant drop just when sportsmen are on the increase," says the Commissioner. Dr. Gabrielson is the retiring director of the U. S. Fish and Wildlife Service.

LOOKING THINGS OVER—

Members of the North Carolina Division of Game and Inland Fisheries are fingering maps, charts and diagrams preparatory

to an investigation of the state's game resources. William L. Hammett of Edneyville returned from the Army to take up the directorship of this project and will be assisted by two other game biologists.

This is a federal-aid project which has as its purpose the laying of a strong foundation for future game management in the state. The entire game resources of the state will be surveyed and studied with a biologist working in both the coastal and western part of the state and Mr. Hammett officiating in the piedmont with offices at Raleigh.

The project leader has just returned from a ten day conference with game biologists of Arkansas where a similar project has just been completed. With the employment of additional personnel, the investigation will get into full swing around July 1; however, field biologists will initiate phases of the work in Orange County during the next ten days, according to Frank W. Eastman, Federal aid Coordinator.

CATCHING CRAPPIE—

With the advent of spring weather, sport fishing has picked up around Plymouth in Washington county. Conaby Creek has been crowded with boats and a large number of fishermen have been going to Lake Phelps. Many good catches of speckled perch or crappie weighing more than two pounds each have been reported from Lake Phelps this season.

"QUOTE BOARD"

Airlines have their quotation board too, only instead of giving stock prices it is used in the reservation room and informs the ticketing personnel as to flight conditions and availability of reservations on all scheduled flights.

Edmondson Bakes Bread On Okinawa

Pfc. William E. Edmondson is now serving with the 263rd Quartermaster Bakery Co., and is a member of the crews that is responsible for baking all the bread needed by the garrison units of Okinawa. A new bakery is under construction in what remains of the one time capitol city of Naha. The new bakery replaces the field set-up and boasts features and ap-

pliances that rival and stateside bakery shop. An outstanding feature will be a pastry shop and doughnut section that will satisfy the 'sweet tooth' requirements of troops stationed on Okinawa.

Pfc. Edmondson entered the Army in April, 1945 and received his basic training at Camp Croft, South Carolina. He then was transferred to Ft. Meade, Md., and then

to Camp Adair, Ore., and departed from the states from Ft. Lawton, Wash., in October, 1945. Prior to his entry in the Army William attended the Roanoke Rapids High School and was a member of the Football team. He was employed by the Rosemary Manufacturing Co. He is the son of Mrs. Lillian Flanagan.

Need a LAXATIVE?



Black-Draught is
1—Usually prompt
2—Usually thorough
3—Always economical
25 to 40 doses only 25¢.

Get BLACK-DRAUGHT

CAUTION: USE ONLY AS DIRECTED

CALL R-461-6
FOR ELECTRICAL REPAIRS

- STOKERS
- OIL BURNERS
- HOT WATER HEATERS
- WASHING MACHINES
- SMALL APPLIANCES

TAYLOR'S
Electrical Repair Service
816 MADISON STREET

RABIES VACCINATION

PURSUANT TO AN ACT OF THE 1935 GENERAL ASSEMBLY OF NORTH CAROLINA, and amended by the 1942 General Assembly, an ACT to prevent RABIES in North Carolina, I will be at the places designated and at time mentioned below to Vaccinate Dogs against RABIES for the year 1946.

The prices during these clinics will be one dollar each, seventy-five cents of this amount will be credited on your dog tax when our certificates are presented to your tax collector.

Please make a note of the time and place most conveniently located and have your dog at these clinics.

You may also bring your dog to our office at any time during this time for inoculation.

MONDAY, APRIL 1st.

Guy Moss Store (Littleton Road) 1:00 to 2:00 P. M.
Hanibald Shearin Store 2:00 to 3:00 P. M.
Banty's Store 3:00 to 4:00 P. M.
Sykes Store (Burton Street) 4:00 to 5:00 P. M.

TUESDAY, APRIL 2nd

Roanoke Rapids (Old Fire House, 2nd St.) 2:00 to 5:00 P. M.

WEDNESDAY, APRIL 3rd

Rosemary (Rear Patterson Old Store) 2:00 to 5:00 P. M.

THURSDAY, APRIL 4th

South Rosemary (Medlins Store) 1:00 to 2:00 P. M.
Shell's Old Store 2:00 to 2:30 P. M.
Allie Powell's Store 2:30 to 3:00 P. M.
Robert Powell's Store 3:00 to 3:30 P. M.
Hornertown (Morris Store) 3:30 to 4:30 P. M.

FRIDAY, APRIL 5th

Kingtown (Littleton Road) 12:00 to 1:00 P. M.
Roanoke Junction (Eso Station) 1:00 to 1:30 P. M.
Hornertown (Martha's Grocery) 1:30 to 2:00 P. M.
Mitchell's Saw Mill (Commissary) 2:00 to 2:30 P. M.
Grant Brick Works (Office) 2:30 to 3:00 P. M.
Evans Hill (Willey's Stables) 3:00 to 4:00 P. M.

MONDAY, APRIL 8th

Information Filling Station 1:00 to 2:00 P. M.
H. L. Faucette Store 2:00 to 3:00 P. M.
Charlie Colleys Store 3:00 to 3:30 P. M.
Matthew Martins Store 3:30 to 4:00 P. M.
Bullingtons Store 4:00 to 4:30 P. M.

TUESDAY, APRIL 9th

Littleton (Mitchell's Old Store) 12:30 to 2:00 P. M.
Bobbitts Old Store (Roper Springs) 2:00 to 2:30 P. M.
Hawkins Chapel Church 2:30 to 3:30 P. M.
Pittards Store 3:30 to 4:30 P. M.
Pierces X Roads 4:30 to 5:00 P. M.

WEDNESDAY, APRIL 10th

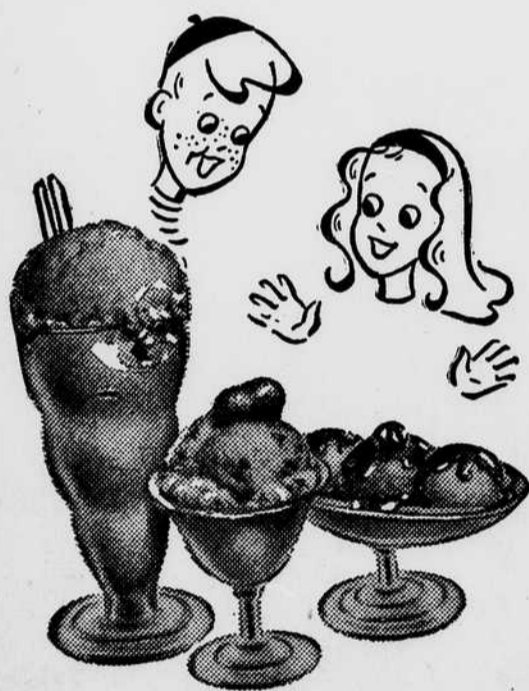
Aurelian Springs (Crawleys Store) 1:00 to 2:00 P. M.
J. R. Liles Store 2:00 to 3:00 P. M.
Airlie 3:00 to 4:00 P. M.
Chichester Store 4:00 to 4:30 P. M.
Anderson's X Roads 4:30 to 5:00 P. M.

THURSDAY, APRIL 11th

Darlington 1:00 to 2:00 P. M.
Henry Willeys Store 2:00 to 3:00 P. M.
Bellamys Store 3:00 to 4:00 P. M.
Heathsville 4:00 to 5:00 P. M.
Mr. Sam Lewis 5:00 to 5:30 P. M.

DR. W. A. CARTER

VETERINARIAN
WELDON, N. C. PHONE W-553-1



Ice Cream MAKES
Your Sundaes and 'Shakes.
They're So Much Better
With

GARDNER'S VELVET ICE CREAM

CALL FOR
GARDNER'S
VELVET
BLACK
WALNUT
ICE CREAM

FLAVOR OF THE MONTH
FOR MARCH.

IN SUNDAES AND SHAKES, THE MOST IMPORTANT INGREDIENT IS THE ICE CREAM. IT'S GOT TO BE SMOOTH, RICH . . . AND IT'S GOT TO HAVE FLAVOR . . . IN FACT, TO BE SURE, IT OUGHT TO BE GARDNER'S VELVET. CALL FOR IT AT YOUR FAVORITE FOUNTAIN.

GARDNER'S Dairy Products

DEALERS FOR "DEEFPREEZE" HOME FREEZING UNITS

PLANTS IN ROCKY MOUNT, GOLDSBORO AND DUNN