

Grimsley Principal Reminisces; City, School Changed Since 1940

By Barbi Prillaman

Gayle Manahan's first and sixth period Literature and Composition classes were treated to a visit from Principal R.L. Glenn on Monday, September 15.

As a compliment to the classes' study of Thornton Wilder's *Our Town*, Mr. Glenn spoke on the Greensboro of forty years ago compared with today's Greensboro. He also gave several examples of the changes Grimsley (then Greensboro) High School has seen in forty years.

Mr. Glenn is a native of Greensboro, and attended public school here, also. He is a member of the Greensboro High School Class of 1940. He says one of the highlights of his senior year was his purchase of a car -- a

1928 T-Model Ford, purchased for twenty dollars. His pride and joy for the year he had it, the car "ran like a sewing machine."

When not driving his model-T, Mr. Glenn made the 45-minute trek to Greensboro High where, according to him, "We were really out in the country." There was very little traffic around the school, which consisted then of the main building, the old science building, cafeteria, and the field house. Kiser and Brooks schools had not been built at the time, so the entire area around GHS was wooded.

Talking about his school-day routine, Mr. Glenn mentioned that students had a half-hour lunch period. He added that there were no problems getting back in

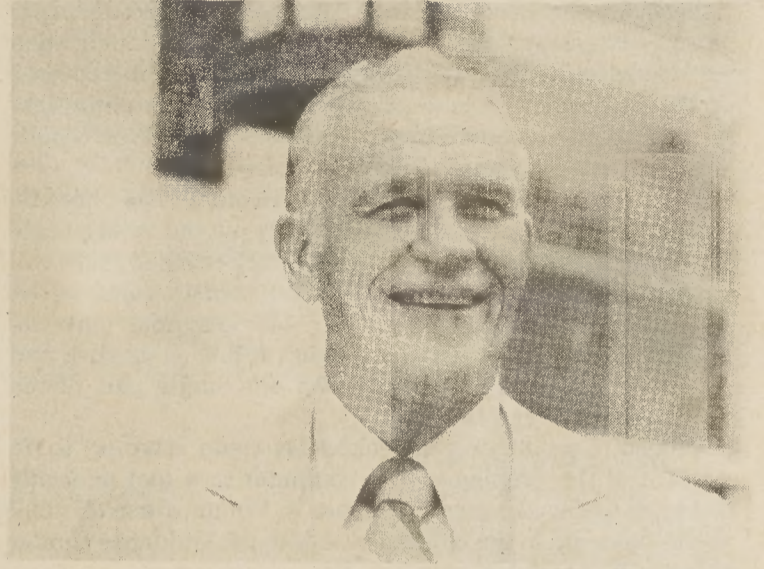
time for class. One reason was that there were really only two places to go for lunch, besides home: Ham's on Friendly Avenue and the Boar and Castle on West Market Street. The main reason students were not late for class was that it was simply not accepted socially. Students had an understanding that they were to be on time for classes, and so they were.

Parts of the GHS campus are almost the same as they were forty years ago. The front lawn looks the same, except there were once boxwoods between the two front walks, and there was a line of dogwood trees between the buildings and the oaks facing Westover Terrace.

Certain areas are not what they used to be, though. The present attendance office was once the drama classroom, and the School Store was a history class. The bus parking lot was formerly the girls' athletic field, and Campus Drive was a dirt road that extended only to the field house.

The Greensboro of 1940 was much different than the city of today. A town of about 56,000 the city limits extended no further than the present intersections of

Continued on page 3



Grimsley High School principal, R. L. Glenn. Mr. Glenn is a native of Greensboro and a member of the 1940 graduating class of Greensboro High School. (Sykes Photo)

SAT's, PSAT's Offered

Grimsley students will have the opportunity to take the Preliminary Scholastic Aptitude Test (PSAT) on October 25.

Those registering to take the test will benefit from services designed to provide students with more information about the content of the test. Students who plan to take the 1980 PSATs will receive a complete practice test, answer key, and scoring instructions. When test scores are reported in December, test booklets, and correct answers as well as student answers will be returned to each student.

The College Board has announced that dates for this year's Scholastic Aptitude Tests (SATs) will be November 1 and December 6, 1980, and January 24, April 4, May 2, and June 6, 1981. The SATs are required for admission by hundreds of colleges and universities nationwide. Achievement tests in various subjects will be administered on most of the test dates. These achievement tests help colleges make placement and admissions decisions.

Deadline for registration for the November 1 testing is

Continued on page 8

Campus News In Brief

Greene Awarded

Peter S. Greene of Grimsley's History Department has been selected to receive one of the National Council for Geographic Education's 1980 Merit Teacher Awards for significant contributions to geographic education in North Carolina.

Each year, the National Council for Geographic Education, located at Western Illinois University, asks state education officers, in most cases social studies curriculum specialists or coordinators, to nominate teachers to receive this award.

According to James W. Vining, Executive Director, "That Mr. Greene's contributions to geographic education came to the attention of the officials in North Carolina speaks well of him."

Senior Project

The class of 1981 was scheduled to begin its annual project on Friday, September 19. The seniors will be selling wrapping paper and gift tags for a two-week period. The money raised will be used to pay for the traditional gift to the school, which will be presented next spring on Awards Day.

Guidance News

The Guidance Department has announced several upcoming activities of interest to students.

Sophomore orientation will be held Monday, September 22 through Friday, October 3 in biology classes. Orientation is designed to acquaint sophomores with guidance services available to them and to encourage them to begin making career-related decisions.

Also, a representative from Fisk University will be in the guidance office to talk with interested students on Friday, November 14.



Carol Essa, Grimsley's 1980-81 Whirlie Bird. Carol is the first female Whirlie Bird in some years. (Hipp Photo)

Whirlie Bird

Carol Essa New Mascot

On September 12, Carol Essa was selected Grimsley Whirlie Bird of the 1980-81 school year. The Whirlie bird functions as a booster of morale at athletic events.

The selection procedure differed from previous years, in that in addition to a physical routine, candidates were required to write a paper about why they wanted to be Whirlie Bird. Each

candidate was also required to submit an original costume design.

Starting this year, the Whirlie Bird will work more closely with the cheerleading squad, and will follow the cheerleaders' attendance policies.

The selection of Essa was made by Grimsley's Pep Board, chaired by Catherine Evans.