

Out of the Blue

Grimsley's production of "Lil' Abner" will run from Wednesday, November 14th through Saturday, November 17th. The Wednesday through Friday shows will be at 7:30 P.M. and the Saturday show will be a 2:30 matinee to accommodate the Autumn Ball that night. All performances will take place in the Grimsley auditorium. The cost is \$4 in advance and \$5 at the door.

The Autumn Ball will take place on November 17th from 8-12 P.M. in the Special Events Center at the Greensboro Coliseum. The theme is Mardi Gras. The cost of tickets is \$10.

The Boo Bash will take place at the Natural Science Center on Wednesday, October 31, from 4-7:30 P.M. A variety of Grimsley clubs will be running booths there so come out and support them.

The late registration date for the December 1st administration date of the SAT is November 8th.

All those interested in taking Driver's Ed from November 7-November 21 should sign up in the main office.

Support Grimsley by using your VIC card at Harris Teeter. Give one of these numbers to the cashier when you check out: 1128 supports Band Boosters, 4618 supports the Choral program, and 4651 supports Athletic Boosters.

National Honor Society inductions will take place November 11th.

Congratulations to Grimsley who was at the top of the district and the Piedmont Triad region with its SAT scores. The average score was 1105. Way to go!

Deadlines for scholarship opportunities are fast approaching. Talk to Ms. Manning if you have any questions.

Conclusion: AP sciences offer rigor

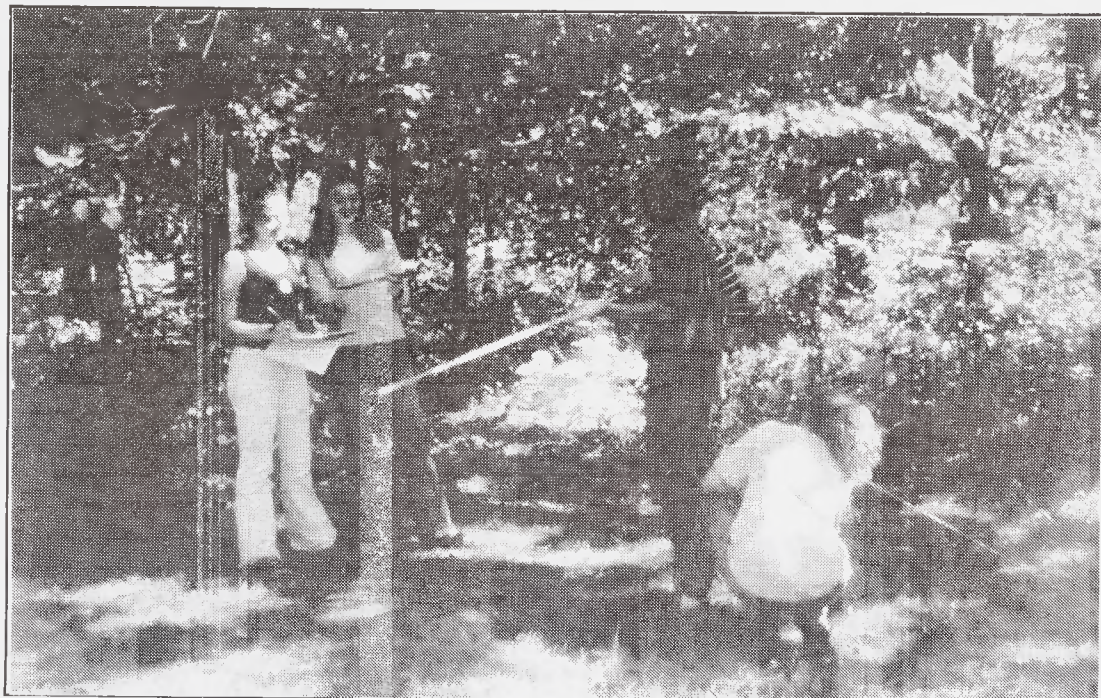
By Nicole Washington
Reporter

"This is the best AP science class because we have a bunny," said Kim Hodgeman, a senior in AP Environmental Sciences.

While such opinions are a little outside the box, there are a variety of reasons Grimsley students choose to take AP science classes. Grimsley offers four Advanced Placement science classes—Chemistry, Biology, Physics AB, and Environmental Sciences. Andy Young, a sophomore and the sole underclassman in AP Environmental Sciences said, "I took it because it is a requirement for my class." New graduation requirements mean that the classes of 2004 and beyond must take an environmental or earth science. In addition, they must also take a biology and physical science class.

Some students choose the classes as a precursor to a future career. Jason Brewer, a senior in AP Environmental said, "It's relative to my major—Atmospheric Sciences." Amber Urooj and Zach Kaplan, two seniors in AP Biology, also cite this reason for taking the class. Both want to go into the medical field and thought the class would be helpful in that respect.

Bianca Kemp, a senior in AP Physics, plans on being a Physics major in college, but has other reasons as well. She said, "Physics is my favorite of the sciences. I think it [physics] creates a balanced edu-



Bartow photo

Lauren Moore, Michelle Lewis, Frank Kelly, and Katie Neas participate in a field study in AP Environmental. Field study is an integral part of the class and forms the basis for the curriculum.

cation. It's something any intellectual person should know a little about. I also like Mr. Griffin."

All of the AP sciences at Grimsley have a few things in common. The classes are predominantly seniors with a few juniors. Sophomores are rare. The classes are small compared to the other science courses, but are larger this year than they have been in past years. In addition, all of the classes are two periods.

The AP science classes are not for everyone. These classes differ from standard or even honors classes in the volume, type, and

difficulty of the work, in addition to the manner in which it is covered. "You need to be a more responsible student," said Hodgeman. Ms. Moss concurs, saying, "There is more independently-covered work. It's not a cookie-cutter class. You have to avoid procrastination because of the volume of the work. The students are usually highly motivated and competitive." Ms. Keele also said, "It's more demanding."

For many students, however, the benefits far outweigh any potential downsides. For example, both the Biology and Environ-

mental Sciences classes do field studies using plots behind the New Science building. They also do stream studies across the street in Buffalo Creek. "It's great the kids have the opportunity," said Ms. Keele. "It wasn't around when I was in school."

Sometimes, however, the lure of the class is as simple as the nature of the class itself. Kaylin Murphy, a senior in AP Biology, said "I heard it was a very interesting, close-knit class. Julie [Greene, who took the class last year] would always tell me how fun it was."

"Lil' Abner" makes big appearance

By Margaret Hair
Reporter

What do you call a group of 20 or so high school students, dressed entirely in black, sitting for three hours in a cramped, smelly space just in front of the auditorium stage on a Friday night in November?

It's the pit orchestra for a Grimsley musical production! Supplying instrumental accompaniment to the singers on stage, members of the pit orchestra are often among the most unsung contributors to Grimsley's fall musicals.

From "Crazy for You" to "Cinderella," from "Anything Goes" to this year's production of "Lil' Abner," the members of the orchestra, dressed in all black to blend in with the visual effect of the play, have provided any number of variations of background music to Grimsley's vocal talents.

The musicians involved in the pit orchestra are now hard at work on this year's project, the comedic "Lil' Abner." Set in a small, obscure town called Dogpatch, the story line is sure to amuse audiences. The piece begins with a usual setting up of characters and



Bartow photo

During rehearsal for "Lil' Abner," Betsy Summers and Emma Thompson, who are both playing Daisy Mae, jokingly read their lines simultaneously. Meanwhile, Katie Pelkey, who has the role of Marryin' Sam, joins in.

whereabouts of the town. The twist comes when their world is turned upside-down by the news that Dogpatch is an "Unnecessary Town," and that it will soon be converted into a government atom bomb testing ground. From here, chaos, further plot developments, and hilarity ensue.

Characters in Grimsley's version

of "Lil' Abner" will be portrayed by two different actors on alternating show dates. The male lead, Lil' Abner, will be played by Adam Reade and Tal Fish. Betsy Summers and Emma Thompson take the role of the female lead, Daisy Mae. Other players include Katie Pelkey and Lauren Jeffries as Marryin' Sam, Leah Roth and

Alexis Komondorea as Mammy, and Matt Griffin and Ryan McCollum as Pappy.

The challenge presented to the pit orchestra of accompanying these actors, singers and dancers may be a daunting one, with music in difficult key signatures, meters, and styles. Interesting song titles stand out at the top of their sheet music, including "Rag Off'n the Bush," "Jubilation T. Cornpone," and "Dogpatch Dance." Still, the musicians feel that they will be able to handle the large workload.

With regards to how much recognition members of the orchestra may receive for work done and hours spent, clarinetist Megan Pinder, a junior, said, "The pit orchestra does a lot of work, and though we may not be recognized as much as other aspects of the play, we still strive to do our best to enhance the production."

Wednesday through Saturday, November 14th-17th, the orchestra will be contributing welcome accompaniment to an engagingly humorous performance of a thoroughly entertaining musical. Show times will be 7:30 on Wednesday through Friday evenings, and a 2:30 matinee on Saturday, due to the Autumn Ball that night.