

the highLIFE

“Pharm. Parties,” while more of an early/mid-2000s trend, are still in practice among some groups of middle-class teens. Trend patterns would suggest that such parties engendered the popularity of prescription drug use, but they aren’t the only reason.”



page 3

News

Politics at its greatest level of enthusiasm occurs during August conventions in Tampa, Florida and Charlotte, North Carolina.

page 2

Opinion

Mudslinging in the political arena seems to annoy more viewers than influence them in favor of any one particular candidate.

page 3

Features

Senior Aaron Ashby expresses his passion for writing and directing his own short films in a local venue.

page 8

Sports

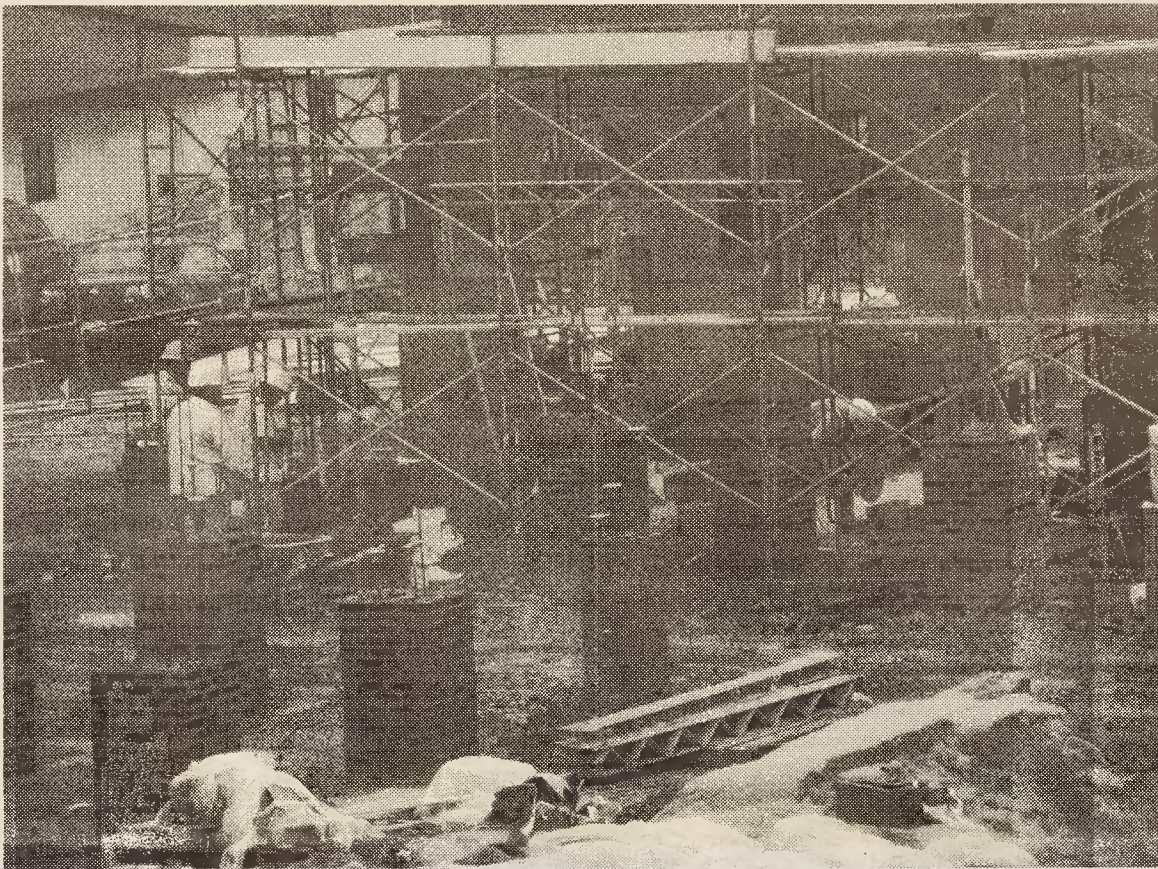
New offensive coach assists Damon Coiro, resulting in the varsity football team enjoying its first victory of the season.

page 11

Index

News	1-2
Opinion	3-5
Spread	6-7
Features	8-9
Sports	10-12

Whirlie community looks forward to opening of upgraded facilities



Whirlies young and old were pleased to see renovations to the gym at the Walk the Schedule Night on Monday, September 10, though they must wait patiently for the opening of the brand new cafeteria until April. Completion dates changed because of several unforeseen delays. Weather conditions, underground pipelines needing rerouting, and the movement of electric and telephone poles have been partly to blame.

Major changes to the gym include renovated locker rooms and bathrooms, increased handicap accessibility, new flooring, and new basketball and volleyball boundary lines. Four serving lines, increased seating, and two outdoor seating areas will create a large environment so that a larger number of students can feel comfortable with more space and quicker lines. Additionally, the Grove will not be necessary for eating space, nor will the main building have to be accessible on rainy days.

Due to the cafeteria construction, parking near Old Science has been moved, blocked, and re-routed with fewer spaces available. Buses have been rerouted as well, but students are enjoying the new breezeway structure in the lower parking lot for both bus and car riders. It has a roof, lighting, and camera surveillance. Campus deliveries have also been somewhat difficult because of the further distance for delivery trucks to park. Aimed to help Allen Middle School and Grimsley was the bond of 2008 for \$17 million to cover the costly work. Woods photo

Newlin continues to focus his efforts on improving high school experience

BY JACOB WOODS
Reporter and Photographer

After completing his first full year as a Whirlie principal, Principal Greg Newlin had much to share about his personal performance.

“There are plenty of growth opportunities for improvement, and the staff and community allow these opportunities to be and help the growth to happen,” said Newlin.

He intends to make several changes. “The administrative team needs to be more visible; students need to be aware that they are there. Students should be at their appropriate intellectual level. Improving and creating better policies. Finally that everyone continues to be professional in the common core,” said Newlin.

To implement these changes, he will use a team approach and be reflective regarding them. As for his long-term plans, he expects for Grimsley to be recognized as a premier school.

“When our school becomes a school of excellence, we will go home with everyone feeling that they have done a good job,” said Newlin.

As head of the Whirlie community, the principal assumes many responsibilities that many students do not realize. “Most students aren’t aware of how

much data goes through me (data on students and staff). The meetings, research (he has to know about everything that goes on), I have to do a lot of interaction not just with staff, but with students,” said Newlin.

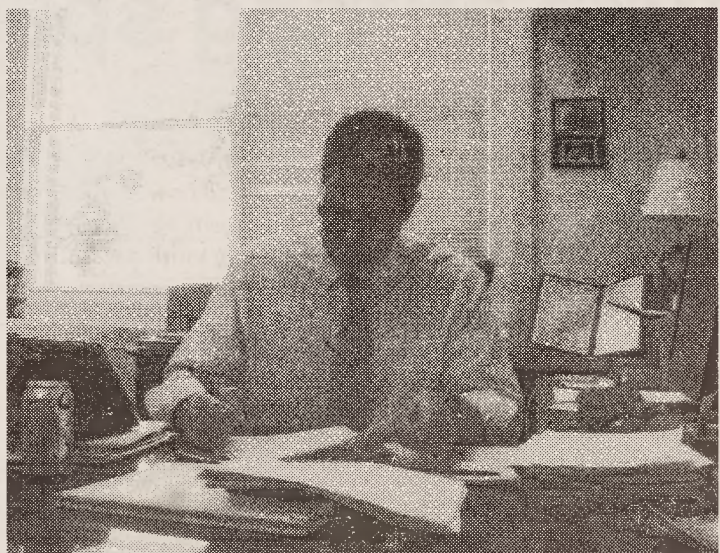
Regardless of how challenging the work is, he enjoys the challenges.

“I work extremely hard, but when you do what you love, you never truly work a day in your life. Now one of the aspects I like most about my job is that I never know what is going to happen the next day. I might rate one day as a three, but another could be a ten. You just never know,” said Newlin.

Securing such a high administrative position most definitely plays a role in his personal life.

“I’m single, and I have no family near here, so I am missing the basics of a personal life, but I’m lucky. I’m fortunate that Grimsley provides replacements for my personal life. The school has needs, and fulfilling those needs works like a hobby for me. Grimsley is my family,” said Newlin. “I love that in a way, we are a family, and I love how much the family members are willing to do for other family members. Kindness is a tradition of our school.”

As for his immediate goals, the principal wants to make a better effort to get to know students better than he did last year.



On a typical day, Principal Greg Newlin spends time visiting classrooms, attending meetings, reading emails, or answering phone calls. His favorite activities, though, are those that involve interacting with students so that he can become better acquainted with them. Woods photo

I have three main areas of concern: customer service, facilities, and academics,” said Newlin.

While faculty and students have experienced quite a turnover of administrators over the last ten years, he was reassuring that he had no plans to leave for quite a while.

“I love being here, and hopefully I will be here for five to six years, so I can get my doctorate,” said Newlin. “I realize every day that I am the lucky one. I hope I am able to give to this great community, staff, students, and the Whirlie Nation, a fraction of what it has given me.”