

on our health

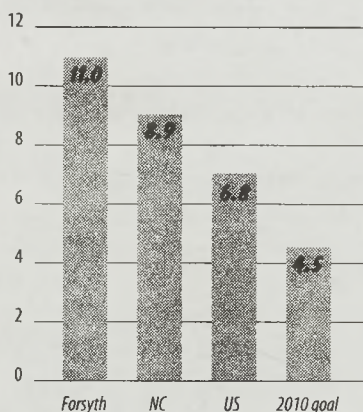
A status report on community health behaviors, reproductive health, access to health care, domestic violence and racial disparities in health outcomes.

Reproductive Health

Healthy mothers and healthy babies help make healthy communities. We lag behind the state and other large counties in improving the health of our babies.

Infant Mortality

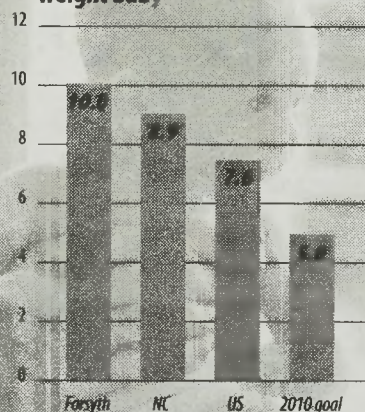
Eleven out of every 1,000 babies born in Forsyth County do not live to see their first birthday



The Infant Mortality Rate is the number of babies who die each year before their first birthday out of every 1000 babies born alive. (All NC figures for 1997 to 2001; U.S. rate for 2001).

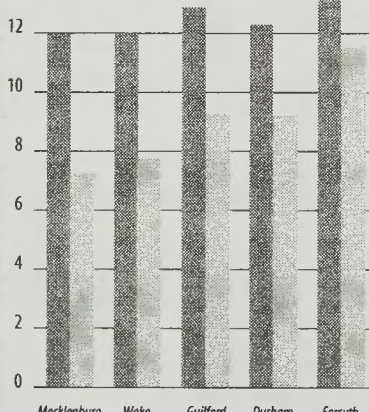
Birth Weight

Ten out of every 100 deliveries in Forsyth County is a low birth weight baby



The Low Birth Weight Rate is the percentage of babies that weigh less than 5.5 pounds at birth. (All NC figures for 1997 to 2001; U.S. rate for 2001).

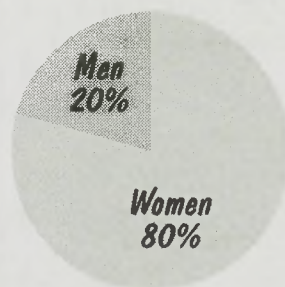
Forsyth County is not improving as fast as other counties



Improvement (lowering) in the Infant Mortality Rate during the ten-year period from 1990 to 2000

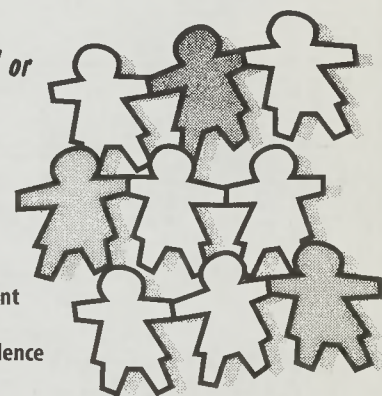
Domestic Violence

Domestic violence includes physical, emotional or sexual abuse of a spouse, child or partner



Most, but not all, victims of domestic violence are women.

In 2002, law enforcement filed more than 4,400 reports of domestic violence in Forsyth County

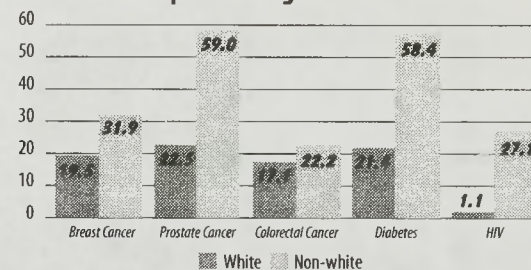


Racial Inequities in Health

African-Americans* are more likely to experience poor health and premature death than whites.

Death Rates

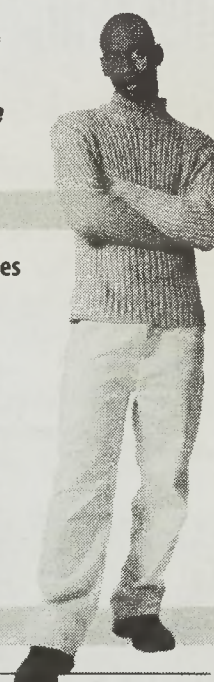
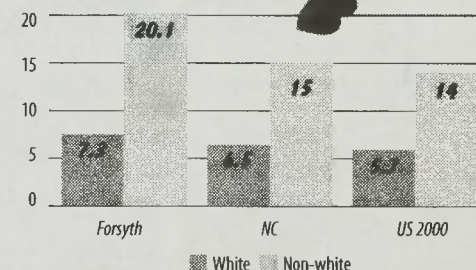
Non-whites* experience higher death rates than whites



Age-adjusted death rates (per 100,000) by cause and race

Infant Mortality Rates

The infant mortality rate for non-whites in Forsyth County is almost three times higher than whites



Forsyth County
Department of Public Health

For more information call: 727-2436 x3890 or go to:
www.co.forsyth.nc.us/PublicHealth/index.htm