



RESIDENT ALERT

Fall of '89 is upon us and the rains have finally stopped. With this new season the Sanford Center has seen a lot of fresh activity. Joining **Rick Eckerd** (presently on his honeymoon in the Greek Islands with his new wife **Bridget Klein**), **Randy Shull** and **Pam Rockwell** are **Yoko Higuchi**, **Sally Rogers** and two six-month residents **Bart Kasten** and **Alicia Keshishian**.

For a couple of weeks this place was upside-down with all the studios and houses being reformed to the needs of the new arrivals. Sally, along with her friend **Paul Lewarchick**, totally rebuilt the back glass studio from the foundation up. Right now Sally and Paul are designing and building equipment with hopes of having the studio hot and working in another month.

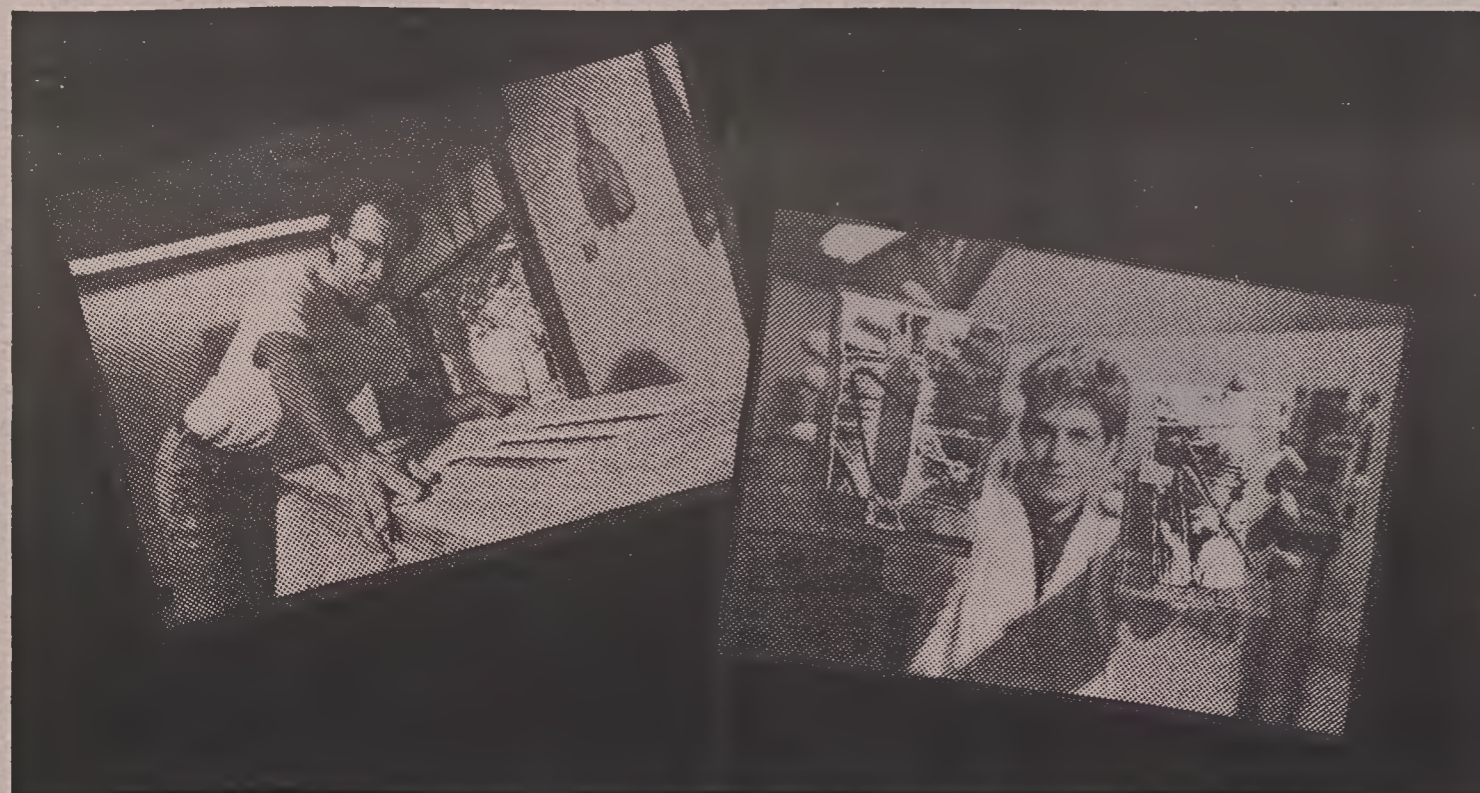
Yoko is busy setting up her studio from scratch. Her work is large mixed media sculptural pieces and since she came from Japan, she did not have the luxury of arriving with the supplies and tools that others have been able to tote along. So, Yoko is welding tables, grinding and drilling into the wee hours of the morning.

Bart, an **Evon Streetman** protege, arrived from the University of Alabama (no banjo on his knee) after teaching photography there this summer. He came to Penland last summer as a studio assistant. His studio set-up was mild thanks to former photo resident **Kathy Campbell** (and **Rod Lazorick**). UPS and Bart have been busy sending work to shows: a two-person show in Chico, CA; work in two shows in Florida and one in Montana. Along with doing his own work, he's getting organized to photograph art work for other craftspeople and artists. Bart says he's looking forward to a cold (compared to Florida) and productive winter.

Alicia works upstairs in a studio which looks like Hurricane Hugo swept through leaving a trail of papers, inks and glitter. At the ACC open house one woman called her studio a "performance piece" and said she should charge admission. Alicia has recently left NYC where she worked as an art director for 8 years. She wants to make a change and found Penland the perfect solution to her transitional period away from the city. Alicia has worked on Penland's graphics off and on for the past few years.

Randy is busy as ever. Between his furniture and site specific pieces, he still makes time to continue his sculpture. Currently he has an outdoor sculpture piece at SECCA and just took down an outdoor installation at the Atlanta Arts Festival. In mid-October, Randy is slated to do a slide-talk in conjunction with an outdoor installation at UNC/Charlotte. Back at the studio, he is working on commissions, including a dining set, a large cabinet and doors for **Doug Sigler**, an ex-teacher who has a house over the hill.

Pam is out-of-town as we go to press, but we know she had a show in Kentucky and has another one coming up in California.



EVENTS

There seems to be an increasing number of groups who want to include Penland in the itinerary of a trip or hold meetings on campus....

On October 21, the **Western North Carolina Alliance**, an organization devoted to local environmental issues, will hold its annual meeting at Penland School. Those interested in attending should call **Lee Hunt** at 688-2763.

The **North Carolina Arts Council** will sponsor an *Artists' Grant Writing Workshop* on November 29 at Ridgeway. The Arts Council is holding these workshops at several locations around the state to help artists apply for grants. The workshop is open to everyone. Please call the North Carolina Arts Council (919-733-2111) or Penland School, closer to the date, for details.

On October 6, 7 and 8, 27 people from the Washington, DC, area-- all members of the **Renwick Gallery Alliance**-- came to tour Penland and visit some craft studios in the area. They had supper both evenings at the Pines and were joined on Friday by some of the local artists. The visit was coordinated by **Pat Thibodeaux**.

THANKSGIVING

We invite you to share Thanksgiving with us at Penland, Thursday, November 23 at 5:00. Penland will provide turkey, mashed potatoes and beverages. We'll also provide dishes and utensils. Those who come will be asked to provide the salads, desserts, breads and vegetables. **Please call the office no later than Wednesday, November 15**, to let us know if you are coming. At that time we'll assign you a category of food to bring. We hope you will join us....

While we're thinking about food, we'd like to add a request to those of you who work in clay! We need donations of dishes for the kitchen. Thanks for whatever you can do!

AEROBICS

Please join us at Ridgeway for aerobics, Monday, Wednesday and Friday at 4:30 PM. Stay fit for free this fall and winter.

PENLAND

RESIDENTS...

Randy Shull &

Alicia Keshishian