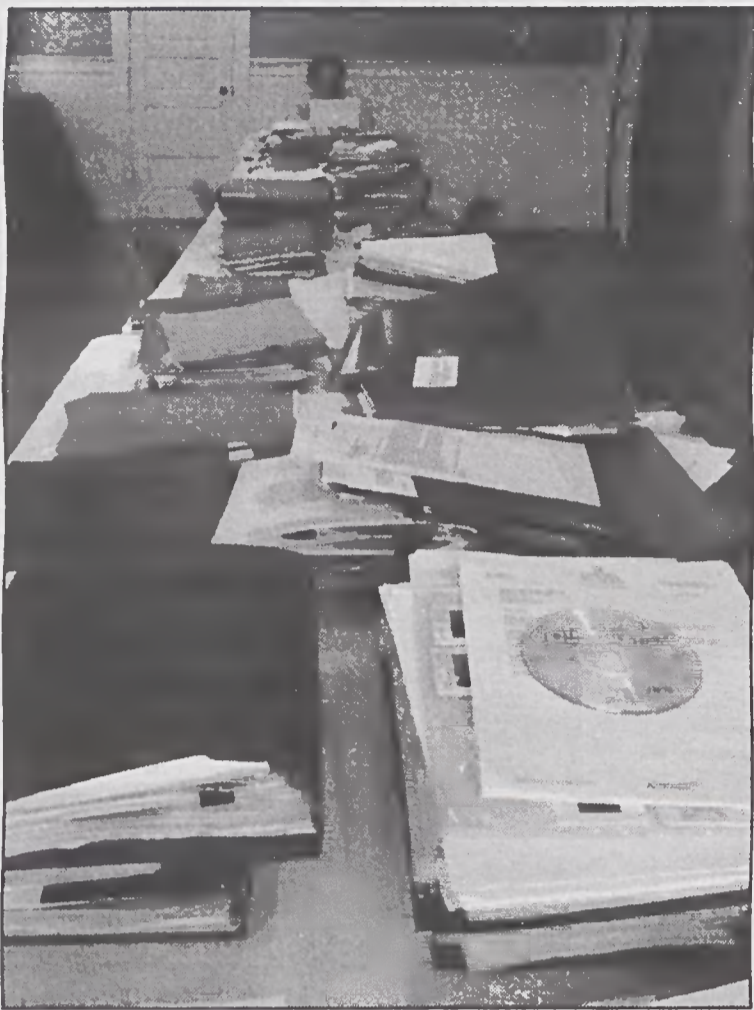


From the Director



While everyone is busily preparing for summer 2007, program director Dana Moore is working on summer 2008. Last week, she decided to go through all the current class proposals at once and make notes. There wasn't room to lay them out in her office, so she commandeered some space at Ridgeway Hall for a few days. It was quite a few files.

PENLAND LINE

Editor: Robin Dreyer

Layout: Robin Dreyer

Photos: Robin Dreyer, except for artwork and where noted

Contributors: Sharif Bey, Mike Davis, Robin Dreyer, Jonathan Lerner, Jean McLaughlin, Wesley Middleton, Susan Klaffky

Thanks to Donna Jean Dreyer, Susan Klaffky, Jean McLaughlin, Dana Moore, and Tammy Hitchcock

Penland School of Crafts is a national center for craft education located in western North Carolina. The school offers workshops, artists' residencies, a community education program, and a gallery. The *Penland Line* is published twice a year to communicate thoughts about the programs, people, and philosophy of Penland. We invite you to share your news, opinions, and/or photographs with us.
Email: publications@penland.org

Penland School of Crafts

P. O. Box 37

Penland, NC 28765-0037

828-765-2359

fax: 828-765-7389

e-mail: office@penland.org

website: www.penland.org

Penland School of Crafts is a nonprofit, tax-exempt, 501(c)(3) organization. Penland receives support for its programs from the North Carolina Arts Council, an agency funded by the State of North Carolina and the National Endowment for the Arts, which believes that a great nation deserves great art.

It's been a great spring at Penland School. The Concentration that just ended had the highest enrollment we've ever recorded for an eight-week session. Summer enrollment is also looking very strong. As our fiscal year closed at the end of April, annual fund giving had significantly exceeded our goal for the year.

As this *Penland Line* goes out, we are at the beginning of the three-week break between spring and summer classes. Although things are relatively quiet and some staff members are taking much-needed time off, there is a swirl of activity at Penland, most notably the pending completion of the Paul Hayden Duensing Letterpress and Printmaking Studio. Various crews have been putting on siding, finishing electrical and plumbing work, cutting trim, and moving equipment. Yesterday we welcomed John and Robyn Horn, great friends of the school who just drove up from Arkansas with a 20-foot trailer loaded with presses, type cabinets and other equipment for the new studio. Not only is John an excellent letterpress printer, it turns out he is an expert press mover as well. After he and Robyn unloaded the equipment from their carefully packed trailer, they proceeded to move two more presses and all of the type from our old studios to the new one (see page 12). Penland's letterpress equipment has been spread between two distant buildings for many years and it's great to see it all coming together in one place.

Meanwhile, across the campus, preparations are being made for summer. Studio coordinators and the school store are ordering supplies for 98 classes. The facilities crew is taking this opportunity to make dozens of repairs to housing and studios. We are already hard at work on the summer benefit auction—the invitation is ready to go to the printer, and auction coordinator Kate Boyd is keeping track of the

auction pieces that are arriving daily. Our program director Dana Moore, while tending to countless details of the upcoming summer, is deep into planning for next summer.

As you will read in this *Penland Line*, in addition to the new letterpress and print studio, there have been a number of significant improvements to the campus over the past year. We have also just completed the planning phase of an exciting new evolution in our community education programs. The Teaching Artist Initiative will provide professional development opportunities for studio artists and teachers to hone the skills needed to integrate arts knowledge with classroom teaching, while expanding art education in the Mitchell County public schools. The planning process for this program included marvelous advisors such as Eric Booth of the Julliard School. In addition to helping us develop the program, Eric was here this spring to teach a one-day workshop, titled *Creative Engagement*, to a full room of artists and teachers. It was an exciting, lively presentation on the role of teachers and artists as facilitators of artistic experience. Look for more detailed information on this new program in the next *Penland Line*.

We always look forward to keeping in touch with you through the *Penland Line*, and as technology evolves we have access to other means of communication as well. If you visit our website, you'll see a link on the home page for our e-mail newsletter, which will bring you regular updates by e-mail. The website is also the place to find upcoming class information, updated information about which classes are still open and new photographs.

As the trees leaf out and the flowers bloom we hope you are looking forward to an enjoyable and productive summer—and we hope it will include a visit to Penland.

—Jean W. McLaughlin, director



A crew filming resident artist Anne Lemanski for the upcoming PBS *Craft in America* series. This three-part program premieres nationwide on Wednesday, May 30, 8:00–11:00 PM. The program, which is the first nationally-televised series on contemporary craft, includes a ten-minute segment on Penland School, and many of the artists featured during the three hours have been Penland instructors. So mark the date, make some popcorn, and invite the neighbors over.

