

# Raleigh-Durham Airport in middle of expensive facelift

By Ron Page  
Staff Writer

Wherever you turn there seems to be construction underway—workers laying cement pads and walks, walls and roofs being erected, heating and cooling systems, new baggage areas, new concessions, new hangars—remodeling almost everywhere.

Growth has become a fact of life at Raleigh-Durham International Airport.

A new parking garage is under construction at a cost of \$35 million. Terminal A has just undergone an \$18 million upgrade, and other facility improvements include \$3.1 million in other renovations to Terminal A, a new administration center at \$6.7 million. Work has also begun on a five-year overall of general facilities that will total about \$35 million.

Although signs of expansion are most readily apparent in parking lot and garage development, here's a rundown of that and other work being done at the airport:

**\*Parking Garage:** Located across the street from Terminal A, the 2,700-space garage will feature glass-enclosed elevators which will take patrons to a central pedestrian mall that takes full advantage of natural light. A tunnel to Terminal A, complete with moving sidewalks,

will reduce transit time and enhance passenger safety and comfort.

The garage is scheduled for completion in the summer of 1999. Terminal Boulevard in front of Terminal A will be widened. The new parking garage is the first of a series of parking garages that when completed in 10 to 15 years will provide more than 16,000 spaces between the terminals. There are 3,100 spaces between Terminals A and C today.

Ellis Don of Norcross, Ga., is the general contractor for the garage with a contract for \$28,500,000. Acorn Industrial of Raleigh holds both a \$699,000 contract for plumbing work and a \$368,000 contract for mechanical/HVAC. Aneco Inc. of Holly Springs has a contract for \$2,325,000 for electrical work; Walker Parking Consultants, contract administration and project representation, \$1,375,750 contract; S&ME Inc., construction quality assurance, \$290,000; and Walker Parking Consultants, design, architectural & engineering design, \$2,088,500.

**□Terminal A Extension:** The new \$18 million wing, an extended concourse of Terminal A, opened in July and integrates the second floor of the extension into the design of the rest of Terminal A. This addition integrates the second floor of the extension into the design of the rest of Terminal A.

Among the many improvements in this project are: six gates; remodeled lobby and ticketing and baggage claim area; upgraded roof, heating & cooling system; new security checkpoint; and new concession areas. Airlines in the new wing are Continental and AirTran. US Airways will use some of the gates in October. The renovated terminal now also holds its first portrait, one of the late North Carolina Governor Luther H. Hodges. Governor

Hodges is honored for his contributions to the establishment of Research Triangle Park. In addition to his service as governor, Hodges served as lieutenant governor and later as U.S. Secretary of Commerce under Presidents John F. Kennedy and Lyndon B. Johnson. Concessions now in Terminal A include Samuel Adams Pub, TCBY/Big Apple Bagel, and a news and gift shop.

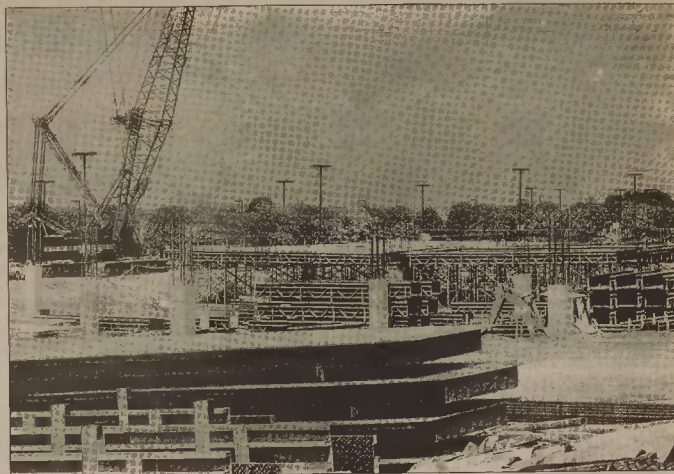
The general contractor is American South of Sanford, with a contract totaling \$5,644,464.33. Other contractors for the extension include Brown Brothers, Durham, plumbing, \$352,849; Comfort Engineers, Durham, mechanical, \$939,390; Aneco, Inc., Ft. Bragg, electrical, \$807,000; Stearns Airport Equipment, five loading bridges, \$993,200; Henry Baker Heating Co., 500-ton chiller, \$683,000 and Via Electric, chiller electrical, \$166,437; Harrod & Associates, Phase I general contractor, \$248,953; T & H Electric Inc., Phase I electrical, \$157,085; and Taylor & Taylor, architectural services, \$1,173,575.

**□Terminal A Renovation:** Work is underway on the renovation of Terminal A. An additional baggage belt will be added in the main baggage claim area. New baggage offices for the airlines will be built as will offices for the RDU Law Enforcement Department.

The building will also get new carpet, paint and ceilings. The project is expected to be completed this fall.

The general contractor is American South of Sanford, with a contract for \$2,557,000. Comfort Engineers provided mechanical/HVAC work with a contract for \$275,570, while Aneco Inc. of Holly Springs provided electrical work with a contract for \$292,796.

**□RDU Center:** The Airport Authority's administrative offices



A new parking garage is under construction at a cost of \$35 million at Raleigh-Durham International Airport. PHOTO BY MARY BETH PILLIERS

moved in September to a new 30,000-square-foot building south of the rental car area. The \$6.7 million project will house the Authority staff and the Research Triangle Regional Partnership.

General contractor was American South with a \$3,342,100 contract. Others included Brown Brothers, plumbing work, \$136,180; Southern Piping, mechanical/HVAC, \$563,442; Pine State Electrical, electrical work, \$571,900; and Pearce Brinkley Cease & Lee, architectural/furniture communications, \$1,086,378.

**□General Aviation Area Redevelopment:** Work has started on the five-year program to overhaul general aviation facilities at RDU. Among the facilities built will be new T-hangers, corporate and conventional hangars. A new general aviation terminal will be constructed along with new facilities for RDU's fixed-base operators. Phase I is expected to be completed in July of next year.

The primary contractor is Glover Construction of Pleasant Hill, NC, with a contract for \$10.6 million.

Ed Martin, Glover's chief engineer, said his company is handling the first phase of the overall development, and that bids will be accepted for phase two sometime in winter or spring of next year.

"Our work covers water, sewer and storm drainage lines, grading,

paving, apron area and concrete pads for the new terminal," Martin explained. "Two large retaining walls are also under construction. The work is off International Drive, the entrance area, and we're about half finished."

When RDU's third parking garage opens in the summer of 1999, the facility will not only add 2,700 parking spaces across from Terminal A, but will be counted among the most advanced and highly functional parking garages in the country. All parking spaces will be angled and helical ramps will move vehicles between the five parking levels.

Openness is the primary objective of the garage. Glass-enclosed elevators similar to those found in hotels, will take patrons to a central pedestrian mall that takes advantage of natural light.

A pedestrian tunnel under Terminal Boulevard between the garage and Terminal A complete with moving sidewalks, will reduce transit time and enhance passenger safety and comfort.

Work on the facility began in January after the Authority awarded a contract to Ellis Don of Norcross, Ga., as the general contractor. The new garage is the start of a series of parking garages that, when complete in 10 to 15 years, will provide more than 16,000 spaces between Terminals A & C. Today, there are 4,000 spaces between the terminals.

Until the parking garage is complete, parking between the terminals will be limited. The construction site and garage footprint has taken approximately 800 spaces out of the terminal area inventory.

On January 15, the parking rates were increased for two reasons: 1- To create enough of a price differential to open up spaces in the hourly lots, and 2- to help finance parking projects beyond the first parking garage. RDU will invest more in parking facilities than in another component of the airport.

Park and Ride Lot 4, formerly known as the North Cargo lot, has been expanded and upgraded. The lot is located across from the North Cargo complex and its capacity is now 3,700 vehicles. The improvements include more entrances and exits, better lighting and more bus shelters. Park and Ride 4 will provide a vital supply of parking during the construction of the new garage.

Although available parking is limited, particularly near the terminals, RDU has more than doubled its parking capacity over the past few years. In 1992, RDU had 6,211 spaces. With the addition of Park and Ride 1, 3 and the expansion of Park and Ride 4, RDU has more than 11,000 parking spaces. In 1997, a grand total of 1,701,329 vehicles were handled in the parking lots, the largest amount in the airport's history.

**THE BRAND OF CHOICE FOR OUTDOOR BUILDING**

Quality #1  
Pressure Treated Wood for Decks, Gazebos, Fencing, Landscaping

WeatherShield® Water Repellent Treatment  
Clearwood® Mold Inhibitor Treatment

"We Can Deliver"

**TARHEEL WOOD TREATING**  
Hwy. 54, Morrisville • 487-9176 • M-F 7:30-5 SAT. 9-12

**Red Wing Shoe Store**

10% OFF with this ad. Sale ends 12/1/98

• WATERPROOF HUNTING BOOTS •  
Famous Irish Setter Boots and Red Wing Steel Toe Waterproof Insulated Boots

Hwy 70 / 401  
Garner / Raleigh NEAR 401 SPLIT 772-5000

**Betty Mangum**  
County Commissioner

Paid for by Mangum for County Commissioner  
Dwight Pearson, Treasurer

**I'm Ready To Work For You!**

*Herb Council*

**Committed To Education**  
**Committed To You**

A bond referendum to FULLY FUND construction, maintenance & technology

A plan for PROFESSIONAL PAY for our professional teachers

A relationship of TRUST AND COOPERATION between the School Board and County Commissioners

Siting SCHOOLS WHERE our CHILDREN LIVE

**Effective Planning**  
**Regional View**

A comprehensive land use plan that reflects a COUNTY-WIDE VISION

A COUNTY-WIDE WATER AND SEWER system

A TRANSPORTATION PLAN that offers choice and connects people to jobs

A REGIONAL APPROACH that combines the goals of our county, our cities and our towns

**Responsible Spending**  
**Working For You**

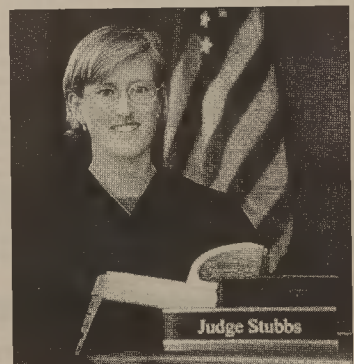
Budgeting to MEET THE NEEDS of our citizens

CAREFUL MANAGEMENT of spending decisions

MAXIMIZING RESOURCES to keep taxes fair and equitable

SETTING PRIORITIES to keep spending in check

**A New Generation of Leadership**



**Judge Stubbs**

**Judge Alice Stubbs** is a new voice of leadership in Wake County. As our District Court Judge, Stubbs knows that we have to protect the innocent and punish the guilty.

**Judge Stubbs understands** how important our families are, and she will fight to keep Wake County safer for all of us. Judge Stubbs understands our concerns about violence in schools, juvenile crime, and child gun safety.

**Judge Stubbs represents** a new voice of leadership on the bench. Judge Stubbs is in touch with our lives, our community, our people, and our concerns.

**Judge Stubbs. She Listens. She Cares.**

**Judge Stubbs**  
DISTRICT COURT

PAID FOR BY THE JUDGE STUBBS ELECTION COMMITTEE, NIKOLE BARRON, TREASURER

**On Nov. 3 VOTE**

**HERB COUNCIL**

**FOR WAKE COUNTY COMMISSIONER**

For more information visit the Council for Commissioner website:  
**www.herbcouncil.com**

**COUNCIL FOR COMMISSIONER**

Herb Council, 17-5772