

# Take Time Out For Christmas Games

Everyone's a child at Christmas time, and that's why there's nothing as much fun when family and friends gather as game-playing. Since Christmas groups usually include both children and adults, game that the whole family will best.

The following games can be played with no special equipment, other than that on hand.

### Charades . . .

Christmas charades is a lively game that the whole family will enjoy.

Divide the group into two teams. Individual members of teams are then called upon to act out a word, character, phrase, scene or situation — and since it's Christmas, all the charades should have Christmas overtones.

Subjects are supplied on a slip of paper by the opposing team and then passed on to the "actor." From here on, it's his job to see how quickly he can get his teammates to guess what he is acting out.

"The Night Before Christmas," "Jingle Bells," "A Partridge in a Pear Tree," and "Filling the Christmas Stocking" are just some of the many, many subjects that can be used.

### Word Play . . .

A popular pencil - and - paper game is called "word play." The object of the game is to see how many words can be made from

a phrase such as "Merry Christmas to All." A time limit is set, and the rule is that no letter can be used in any word more often than it appears in the phrase.

In other words, words made from "Merry Christmas to All" can include no more than one "e," "i" or "o," while they could contain as many as two "m's" or three "r's."

Since word play involves competition among its players, it's



"Happy" Clown

This sad faced clown brought laughs at the Wake Forest Christmas parade.

advisable to allow the children to compete against one another, while the adults battle it out among themselves.

### Santa's Sleigh . . .

"Santa's Packing His Sleigh" is a quiet Christmas game that provides fun and hearty laughter. It starts simply enough with one member of the group saying, "Santa's packing his sleigh, and he's bringing a toy dog."

Then each person repeats the sentence, adding another gift to Santa's sleigh. The object of the game is to repeat correctly, in order, the complete list of gifts in Santa's sleigh — and it's harder than it sounds.

As the list gets longer and longer, more and more players just can't seem to remember the whole list and its order, so consequently they drop out, until only one is left.

### COFFEE FOR TEA

The Moravian Candle Tea, still observed during the Advent season by thousands each year in the Single Brothers House at the Old Salem restoration in Winston-Salem, N. C., is a simple meal and not a religious sacrament. It consists of a special bun or sugar cake and usually coffee, rather than tea.

## Willises Entertain Employees, Directors

Mr. and Mrs. Henry Willis entertained the funeral home employees, Burial Association officers and directors and their families Sunday at their home.

A brief devotional period was led by the Rev. Roger Patterson. About 50 persons enjoyed the buffet supper.

## Identify Yourself For Color Prints

Would you like a color picture of yourself? You can have one if you can identify yourself in one of the pictures of the Wake Forest Christmas parade which are on display at Central Carolina Bank. Go in between now and Jan 10 and

see if you're one of the lucky ones. Many spectators are included. No strings are attached according to the representative from Long Meadow Farms.

Never inquire into another man's secret; but conceal that which is entrusted to you, no matter how hard pressed to reveal it.



May we wish you a very Merry Christmas...

HARDWICKE PLUMBING & HOME REPAIRS

ERY  
MAS  
ht of the  
ver guide  
nspire us  
aily lives.

J. WILLIAMS AGENCY



Friendly

wish to you for the Pueltide.  
g you all yours have a Merry Christmas!

ARVEY HOLDING  
DISTRIBUTOR OF ESSO PRODUCTS



OD  
SHES  
OR Christmas

h's cheery voices raised in Christmas  
ress the good will we feel for  
riends. Thanks and Merry Christmas!

es Hardware Co.

Wake Forest, N. C.

# They Products Corp.

WAKE FOREST, N. C.

cepting applications at the plant for employment  
iving trades and skills:

- Tool, Jig and Fixture Makers
- Machinists
- Machine Operators
- Welders
- Assemblers
- Production Trainees

ment interviews available between following hours  
y thru Friday 9 a.m. - 11 a.m. and 2 p.m. - 4 p.m.

## SNOW NOT PART OF FIRST CHRISTMAS

Americans who dream of a white Christmas with Santa Claus popping down the chimney to the tune of "Jingle Bells" can thank assorted writers and poets and the northern climate. Christmas in the land of Christ's birth, however, is another matter.

What is Christmas like in Bethlehem?

There's generally no snow, for one thing, for winters are mild in the Judean Hills around Bethlehem. No Santa Claus listens to children's pleas, for he's an American invention based on a European saint. And there's probably no decorated Christmas tree in the village square; that custom originated in Germany.

Instead, the focal point of Christmas in Bethlehem is the Church of St. Mary of the Nativity, supposedly built over the spot where Jesus was born. Here pilgrims from all over the world gather on Christmas Eve. First there is carol-singing in the square facing

the church. Then all enter for the solemn midnight mass. After the service, an image of Christ is carried in a procession down into the grotto, and placed in a manger where it lies until January 6, the Feast of the Epiphany.

After this ceremony, some may wander into the fields outside the town, where perhaps shepherds long ago heard the news of the birth of Christ.

All this takes place, of course, on the eve of December 25. But that's not the end of Christmas in Bethlehem. For the Eastern Orthodox churches celebrate the holiday on January 6, and the Armenians observe it on January 18, which is January 6 according to the old style, or Julian calendar.

## GREETINGS

Joy unconfined, hope unrestrained... our Christmas wish for you.



GARNER'S  
ESSO SERVICE  
MRS. O. C. GARNER

### WAITING FOR SANTA

What a busy, happy season — Holly wreath adorns the door; Tinsel, ribbon-scrap, the reason for the litter on the floor. Lovely scents come from the region.

Where the cooking's always done; And the packages are legion, Everyone is having fun! Cranberries are cooked and jelling, Cookies fill the big, fat crocks; Boys, playing games, are yelling— By the chimney hang the socks. I said: "I will not sleep a wink", Dad gave his big, wide smile; Mom added: "That's just what you think —

You will dear, after awhile!" "I never sleep the NIGHT BEFORE, I simply can't — because I'd miss the knocking at the door, Of dear old Santa Claus. This is The Day of all the year That I enjoy the Most; Now that it's here, I cannot eat, Please Mom, — no eggs or toast!" Evelyn A. Justice



MERRY  
Christmas  
May your day be bright with the joys of Christmas.

PETRONIA'S  
BEAUTY SHOP  
WAKE FOREST, N. C.



HENRY WILLIS  
Owner and Manager



JIMMY CARTER  
Licensed Embalmer  
And Funeral Director



HARVEY JONES  
Funeral Director



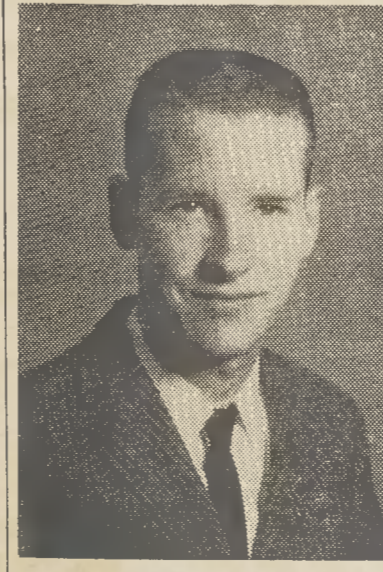
NAOMI WILLIS  
Secretary - Treasurer



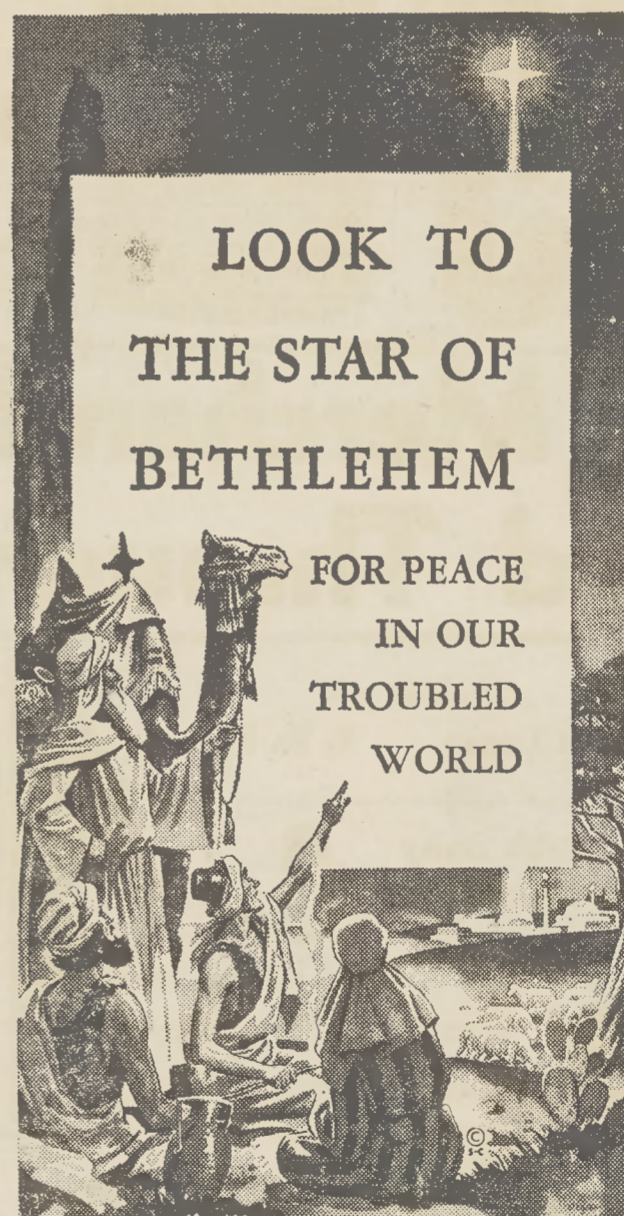
WILLIAM STELL  
Assistant Funeral Director



STEPHANIE WILLIS  
Lady Attendant



LARRY MABREY  
Floral Designer



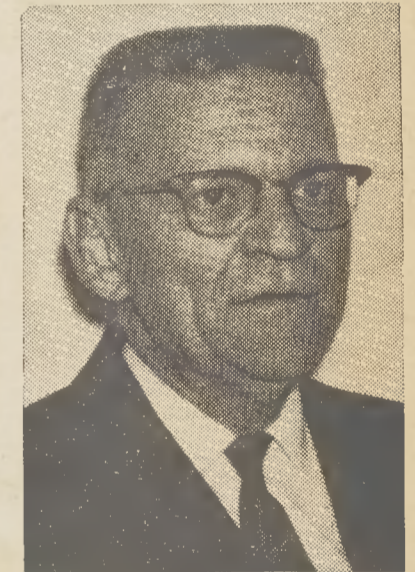
LOOK TO  
THE STAR OF  
BETHLEHEM

FOR PEACE  
IN OUR  
TROUBLED  
WORLD

Once again the Star of Bethlehem  
burns brightly... may it illumine  
your heart at this holy season.

Willis  
Funeral Service

WAKE FOREST, N. C.



NEIL ROGERS  
Assistant Funeral Director



MRS. MARY WATKINS  
Maid



CEALOUS MCCOY CONYERS  
Porter