

Special Athey Products Plant Dedication Issue

The Wake Weekly And The Youngsville - Rolesville Record

Volume XIX, Number 25 Published at Wake Forest, North Carolina 27587 Friday Morning, June 25, 1965 16 pages this week 10¢ Per Copy

Hodges To Welcome Athey



Athey Products Corporation's new plant and executive offices in North Carolina will be formally dedicated on June 25. The Honorable Luther H. Hodges, Chairman of the Board of the Research Triangle Foundation of North Carolina, and former Secretary of the United States Department of Commerce, will welcome Athey to North Carolina and cut the ribbon officially opening the new plant.

Guided tours for visitors, customers, users, employees and their families are scheduled for both June 25 and June 26.

The new 147,000 sq. ft. plant, built on a 40-acre tract, is located on US 1A south of Wake Forest. Athey moved its plant and headquarters from the Chicago area to this specially designed functional plant for heavy metal fabrication early in March. New machine tools for operation sequence and material handling equipment were also acquired. Athey is now in full production of both equipment and replacement parts, and is in an excellent position to develop and test new products.

On display during the Open House will be Athey Trailers and Loaders built at the local plant and an Athey/Kolman #101 Conveyor for the Sioux Falls, South Dakota, division.

Trailers. Today, these trailers are mounted on rubber tires but the "Forged-Trak" is still popular in the critical heavy hauling areas of construction, exploration, mining and earthmoving.

Athey's Modern New Plant South Of Wake Forest

Athey's First Products Were Conceived Right Here In North Carolina In 1917

Athey Products Corporation was founded in 1922 to produce and market quality heavy construction and mining equipment.

Athey's first products, conceived in 1917 in Beaufort, North Carolina, was the "Truss Wheel" a wheeled track undercarriage for moving equipment materials and supplies over mucky sand. These "Forged-Traks" as they were later

called, proved so effective over 1000 pairs were manufactured and sold during the four years prior to the formation of the present Athey Corporation.

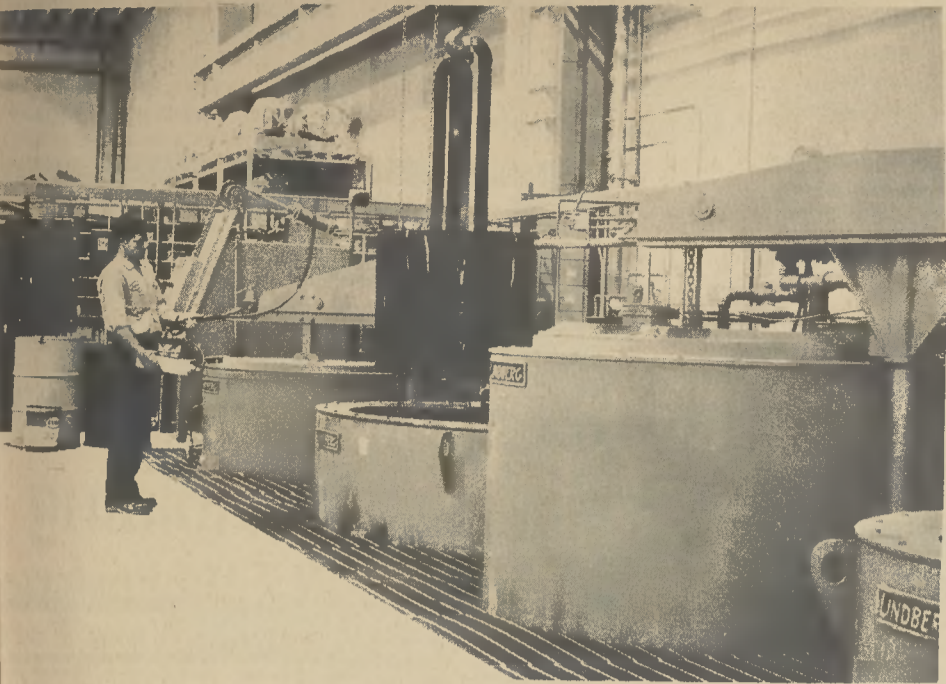
The track-laying tractor became an important construction, mining and agricultural prime mover at about this same time and the two products soon teamed together to offer practical solutions to many hauling

problems of that day. Athey soon added a line of earth and rock wagons with capacities up to 30 tons--capacities that were impossible to attain until the advent of the "Forged-Trak" Wheel.

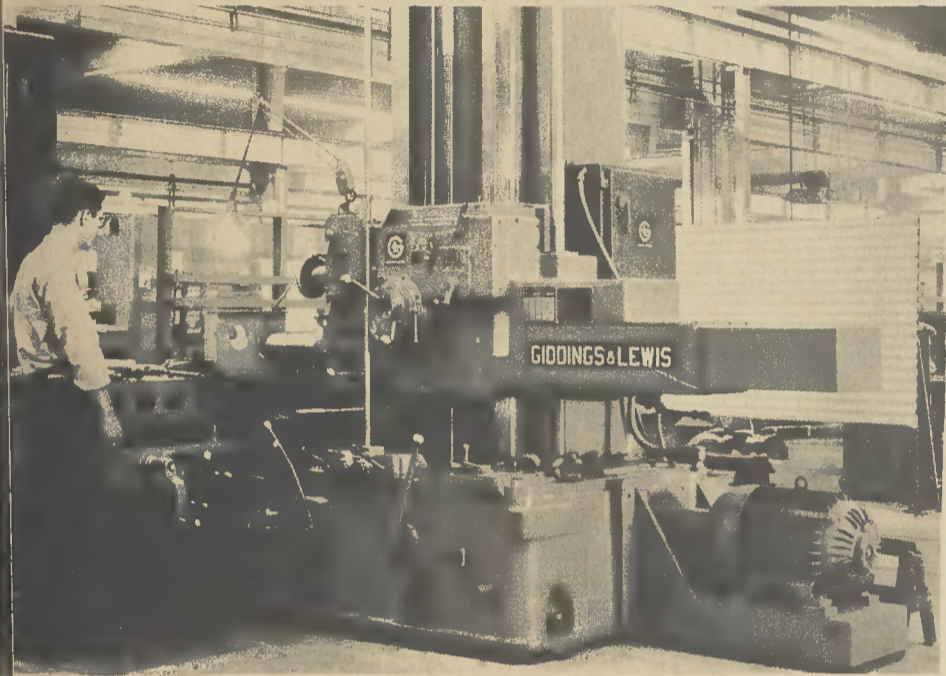
The highway construction program, which started about 1925 found Athey and Caterpillar teamed up with highly productive and effective hauling equip-

ment which gained the instant approval of the earthmoving and construction industry.

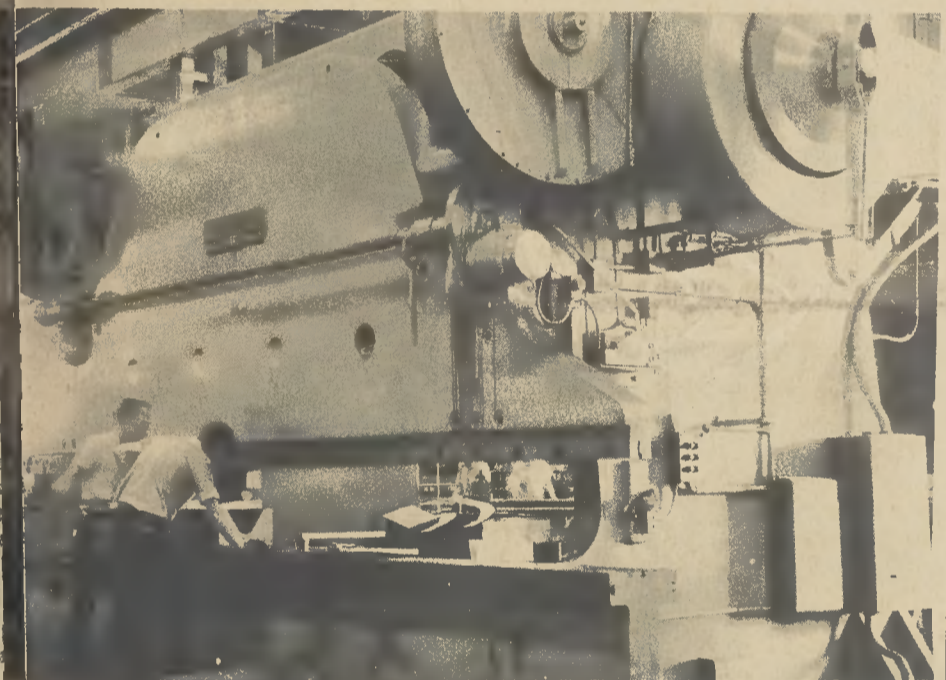
Since 1930 the Athey product line has been constantly updated and broadened to match increased tractor power and construction needs. Today, Athey produces and markets some thirty products ranging from belt loaders and conveyors to 200-ton capacity hauling



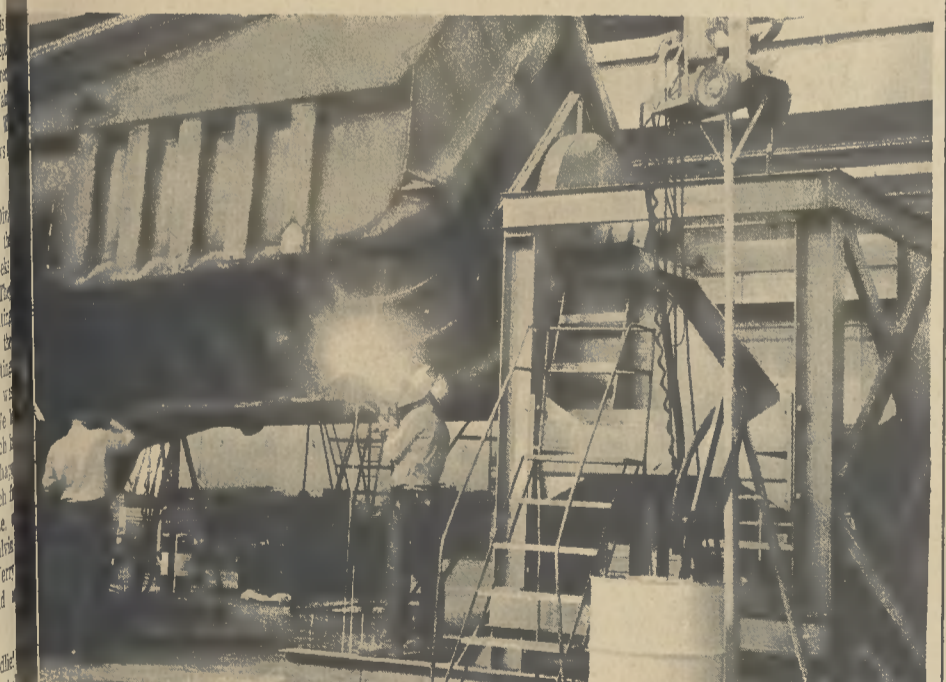
Heat Treating Section



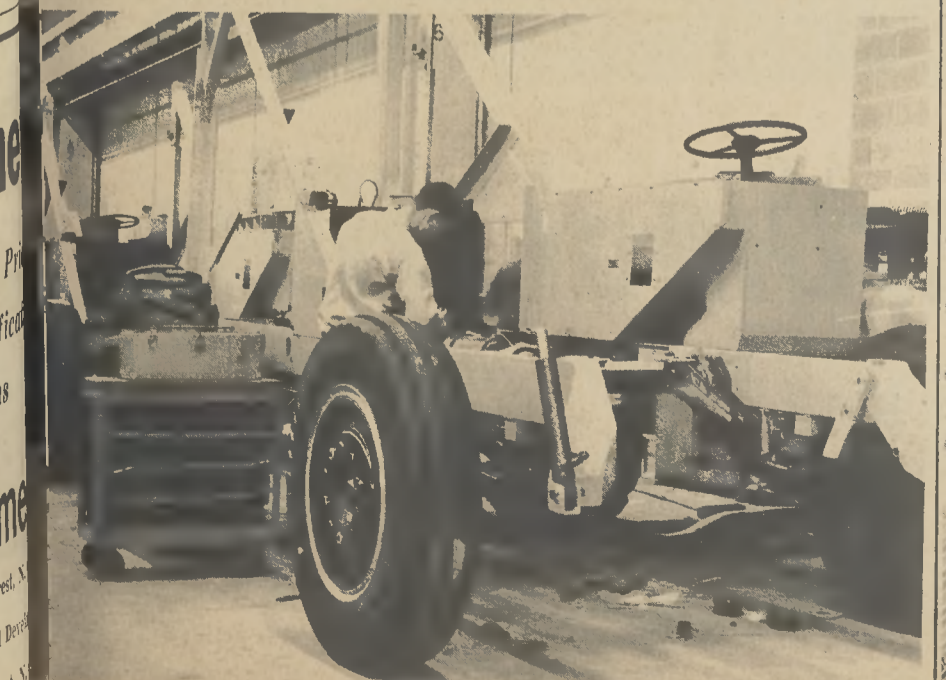
Machine Shop Area



900-Ton Forming Break



Body Welding Fixture



Force-Feed Loader Assembly



W. D. LEASE
President



C. E. MATTHEWS
Vice Pres. Foreign Operations



FRANK D. ROSSI
Vice President, Purchasing



PAUL A. LINNEY
Vice-President - Assistant to the President



ROBERT C. LAWSON
Vice President - Marketing



ROBERT S. HINDS
Treasurer and Comptroller



ALBINA E. SAIDL
Secretary and Assistant Treasurer

Athey Products Corporation Staffed With Well Qualified Personnel



Athey Supervisory Personnel

Back row, left to right: John Johnson, Ray Clark, Charles Shearon, Mack Sauls, Jack Paul, Jack Maddox. Front row, left

to right: Vernon Miles, Ray Selisker, Phil Muenchow, Rudolph Blake, and Clarence Buhle.