

## Methodist Orphanage.

A. S. BARNES, ..... Superintendent  
 MRS. MATTIE JENKINS, ..... Matron.

Send money to the Superintendent by Check, Postoffice, or Express Money Order, or Registered Letter

### Form of Bequest.

I give and bequeath to the Methodist Orphanage situated at Raleigh, N. C. ....  
 (Here designate the bequest.)

### OUR NEEDS.

Twenty-four organized Sunday-school classes each to assume the support of an orphan at \$10 per month.

Every Methodist in the North Carolina Conference to give one day's income to the Methodist Orphanage.

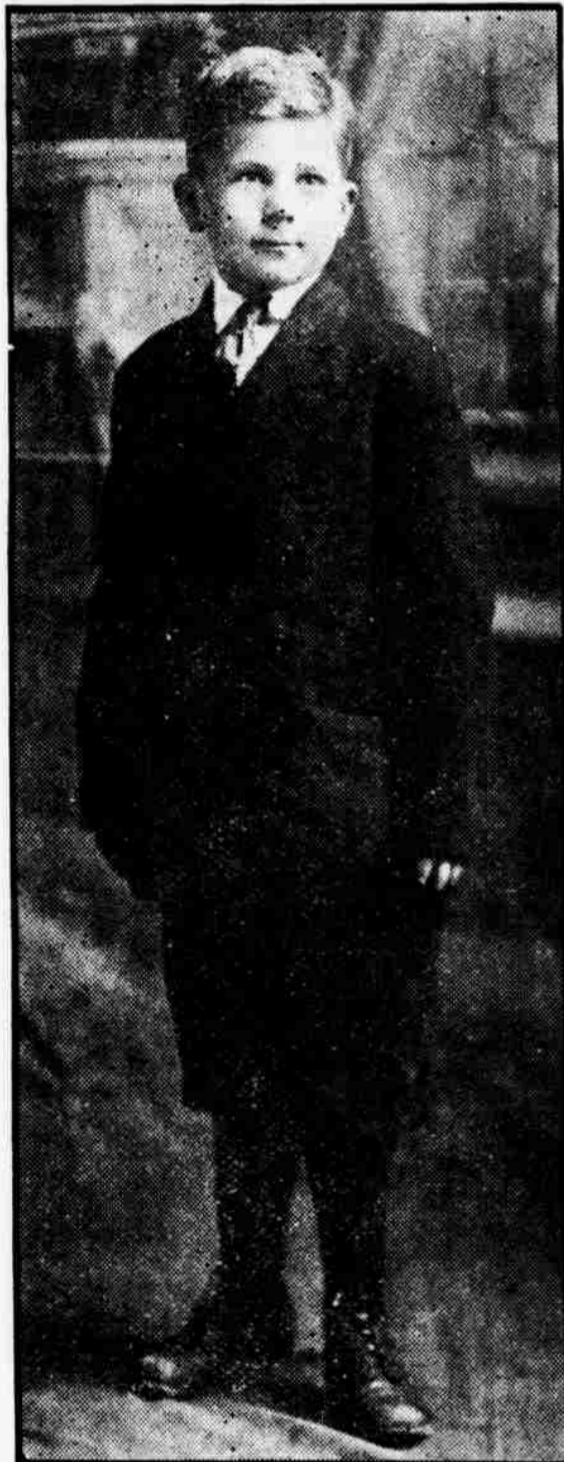
Forty-eight persons each to assume the support of an orphan at \$10 per month.

Twenty-four persons each to send a pair of blankets.

- Apples and sweet potatoes.
- All kinds of canned goods.
- Six crates of chickens.

|| || ||

Baraca Class, Norlina, Ridgeway Ct., \$5.00; Ladies' Aid Society, Soule Church, Swan Quarter Ct., \$3.00; Soule



One of Our Boys.

S. S., Swan Quarter Ct., \$13.00; Lane Church S. S., Lillington Ct., 82 cents; Broadway S. S., Jonesboro Ct., \$2.39; Parker's Church S. S., Raeford Ct., \$1.36; Carvers Creek Ct., assessment, \$100.00; McKindree S. S., Robeson Ct., \$2.26; Bethesda S. S., Robeson Ct., \$10.00; two organized classes, McKendree S. S., Robeson Ct., \$14.00; Beaufort S. S., \$10.00; Pittsboro Ct., assessment, \$45.36; Philathea Class, Kinston, \$5.00; Maple Grove S. S., Jones Ct., \$2.40; "A Friend," Swepsonville Church, \$1.00; Mrs. M. J. McFarland, Swepsonville Church, \$1.00; Mrs. Florence J. Lamb, Macon, one day's work, \$1.00; Garysburg S. S., Garysburg Ct., \$5.00; Mrs. Virginia C. Gilbert, Trenton, \$5.00; Bethlehem S. S., Warren Ct., 65 cents; Young Ladies' Aid Society, Carthage, \$10.00; Mr. A. Cameron, Vass Ct., \$150.00; Holly Grove S. S., Columbia



Page Dormitory, Methodist Orphanage, Raleigh, N. C.

Ct., 25 cents; Louisburg S. S., \$50.00; Zion S. S., Gates Ct., \$5.00; Roberdell, No. 1 S. S., 65 cents; Millbrook S. S., Millbrook Ct., \$1.25; Mrs. Lizzie Evans, Parkton Ct., \$5.00; Mrs. Amelia Gainey, Parkton Ct., \$5.00; Bethel S. S., Roseboro Ct., \$5.00; Tabernacle S. S., Elise Ct., \$1.40; Snead's Grove S. S., Laurel Hill Ct., \$1.25; "A Friend," Grace Church, Wilmington, \$5.00; Bethlehem S. S., Columbia Ct., \$2.00; Aid Society, Princeton, \$5.00; Ladies of Garysburg, \$23.25; Ellen Willis Missionary Society, Laurinburg, \$6.00; Snead's Grove S. S., Laurel Hill Ct., \$5.50; Mrs. J. R. Hill, Philadelphia Church, Gates Ct., \$1.00; Rosemary S. S., \$5.65; Hopewell S. S., Newton Grove Charge, \$5.50; Selma Cotton Mill S. S., \$2.61; Mrs. Whitlock and Mrs. Evans, Maxton, \$1.00; Mrs. Carrie L. Brantley, Winston, \$2.00; Oxford Baraca Class, \$5.00; Conetoe S. S., Bethel Ct., \$1.50; Lemon Springs S. S., Vass Ct., \$1.45; Junior Baraca Class, Kinston, \$15.00; Warrenton M. E. Baraca Class, \$10.50; Mrs. S. Mitchell, Carver's Creek Ct., \$24.00; Durham Ct., assessment, \$83.00; Bank's Chapel S. S., Franklinton Ct., \$5.00; Hookerton Ct., assessment, \$50.00; Primary Department, Edenton Street Church, Raleigh, \$4.00; Missionary Society, Southport, \$15.00; Missionary Society, Wallace, \$7.50; Missionary Society, Wanchese, Roanoke Island Charge, \$5.00; Evan's S. S., Chowan Ct., \$5.00; Zion S. S., Conway Ct., \$7.50; Fletcher's Chapel S. S., Durham Ct., \$2.00; Roanoke Rapids S. S., \$5.00; Clarkton S. S., Elizabeth Ct., \$6.30; Rockingham S. S., \$7.31; Focham Ct., assessment, \$15.00; Duke Charge, assessment, \$25.00; Abner Harrel, Jr., Philadelphia Church, Gates Ct., \$2.50; S. J. Hayes, Philadelphia Church, Gates Ct., \$1.00; A. E. Barnes, Philadelphia Church, Gates Ct., \$1.00; L. Otha Brown, Zion Church, Gates Ct., \$10.00; J. R. Barnes, Herman Church, Oxford Ct., \$5.00; Berean Class, Central Church, Raleigh, \$7.50; Gray R. King, Nashville Ct., \$5.00; Burlington Baraca Class, \$10.00; Aid Society, Edenton Charge, \$5.00; Sander's Chapel S. S., Selma Ct., \$3.00; Missionary Society, Ahoskie, \$6.14; Aid Society, Mt. Vernon Church, Siler City, \$20.00; Missionary Society, Farmville, \$4.00; Mebane S. S., \$4.50; Oak Grove S. S., Person Ct., \$5.00; New Hope S. S., Northampton Ct., \$4.00; Wesley Bible Class, Rocky Mount, \$10.00; Mt. Pleasant S. S., Haw River Ct., \$3.30; Junior Philathea Class, St. Paul Church, Goldsboro, \$5.00; Antioch S. S., Newton Grove Ct., \$1.00; Shocco S. S., Warren Ct., 95 cents; Weldon S. S., \$22.00; Stem S. S., Granville Ct., \$5.00; Rehoboth S. S., Northampton Ct., \$3.49; Stovall S. S.,

Oxford Ct., \$5.66; Mt. Olive S. S., \$5.00; Wesleyan Class, Mt. Olive S. S., \$15.00; Daniel's Chapel S. S., Goldsboro Ct., \$2.00; W. A. Wilson, Dover, \$1.00; Ebenezer S. S., Tar River Ct., \$7.33; Doub's Chapel S. S., Carthage Ct., \$3.50; J. V. Webb, Rockingham Charge, \$25.00; Ladies of Mt. Pleasant Church, Bailey, \$7.00; Philathea Class, Maxton, \$4.70; Ladies' Bible Class, Laurinburg, \$6.00; Junior Philathea Class, Maxton, \$4.00; Circle of M. E. Church, Henderson, \$6.00; Galloway Wesley Class, Swepsonville, \$3.00; Mr. Malcolm McKinnee, Louisburg, \$100.00; Ebenezer S. S., Garner Ct., \$1.00; Wesley Bible Class, Wilson, \$5.00; L. E. Barnes, Wilson, \$5.00; Candor S. S., \$3.50; East Burlington Ct., \$62.00.

### RECIPE FOR GRAY HAIR.

To half pint of water add 1 oz. Bay Rum, a small box of Barbo Compound, and 1-4 oz. of glycerine. Any druggist can put this up or you can mix it at home at very little cost. Full directions for making and use come in each box of Barbo Compound. It will gradually darken streaked, faded gray hair, and make it soft and glossy. It will not color the scalp, it is not sticky or greasy.

### WONDERFUL EGG PRODUCER.

Any poultry raiser can easily double his profits by doubling the egg production of his hens. A scientific tonic has been discovered that revitalizes the flock and makes hens work all the time. The tonic is called "More Eggs." Give your hens a few cents worth of "More Eggs" and you will be amazed and delighted with results. A dollar's worth of "More Eggs" will double this year's production of eggs, so if you wish to try this great profit maker, write E. J. Reefer, Poultry Expert, 6408 Reefer Building, Kansas City, Mo., who will send you a season's supply of "More Eggs" Tonic for \$1.00 (pre-paid.) So confident is Mr. Reefer of the results that a million dollar bank guarantees if you are not absolutely satisfied your dollar will be returned on request and the "More Eggs" cost you nothing. Send a dollar today or ask Mr. Reefer for his free poultry book that tells the experience of a man who has made a fortune out of poultry.

### BOOK OF PRAYERS

Complete Manual of several hundred terse, pointed, appropriate Prayers for use in Church, Prayer Meetings, Young People's Society, Sunday Schools, Missionary, Grace and Salvation Prayers. Question of How and What to Pray in Public fully covered by model, suggestive and devout Prayers. Vest Pocket size, 125 pages. Cloth 25c, Morocco 35c, postpaid, stamps taken. Agents Wanted. GEO. W. NOBLE, Monon Building, Chicago, Ill.

### CLERICAL HELP WANTED.

There is now the greatest demand for trained men and women that our country has ever known. Excellent Government and Business Positions are waiting for you. Let us train you for one of these paying, permanent positions. KING'S BUSINESS COLLEGE is the largest and best equipped Business College in the State of North Carolina. Its handsome catalogue is sent you free on request. Write for your copy today.

**KING'S BUSINESS COLLEGE** RALEIGH, N. C.  
 CHARLOTTE, N. C.

### STANDARD MEMORIAL WINDOWS

MADE IN HIGH POINT

Beautiful in design—strong in construction. Largest and oldest glass plant in the South. Capacity for any and all orders and prompt delivery. Satisfaction guaranteed. References—any of our old customers or any bank or banker in High Point. Write for catalog.

HIGH POINT GLASS & DECORATIVE CO., High Point, N. C.

### DRY CLEANING

Will make last winter's Suit or Coat look and wear like new.

**DON'T WASTE MONEY ON A NEW SUIT**

when only a few cents will put your old one in excellent shape. Bundle it up and mail it today. Many of the apparently new suits you see on the street today are last year's suits dry cleaned.

Satisfaction Guaranteed. Prices Extremely Reasonable.

**W. S. COPLESTON CO.,**

Expert Dry Cleaners and Dyers,  
 89 Society Street  
 Charleston, S. C.

## Can YOU Answer This?



What Bible incident does this picture represent? Look at it closely. Ask a friend to help you if you are not posted. Write your answer in a few words, simply mentioning in what part of the Bible the story or parable appears or what the picture means.

Give your name and full address in your letter, put 3-cent stamp on and mail it to Bible Treasure Search Editor, Box 5-1, Station N, Cincinnati, Ohio. You will be rewarded positively with a set of beautiful picture cards in color, two illustrated stories and other interesting reading matter; also an opportunity to gain \$500.00 in cash and other rewards by solving more pictures. Don't miss this if you would like to be surprised and delighted.

Just watch and see what you'll get!