

July Market Trading Closes With Record Of Best Month Of 1941

RAILS, AIRCRAFT TOP CLOSING DAY

Volume Goes Over 800,000 Mark Despite Late-Hour Slack in Trading

By BERNARD S. O'HARA NEW YORK, July 31.—(AP)—Stocks acted a bit weary today as the market closed the books on July, best recovery month in more than a year.

Bidding for rails, aircraft and specialties put many favorites into new high ground for 1941 with gains of fractions to a point or so in the forenoon. Prices wavered in numerous cases after mid-day and the close was definitely irregular.

Dealings attained a fair amount of speed on the morning push, then slackened in the final hours; there were 853,940 shares against 745,690 Wednesday.

The Associated Press average of 60 stocks was unchanged at 44.1 but on the month was up 2.5 points, widest advance in this composite, except for June a year ago, since September, 1939. The month's activity also was the largest since last December.

The day's stalemate was exemplified by the fact that, of 810 issues traded, 302 were down, 299 up and 209 unchanged.

Growing tax fears and the desire to await congressional action on the Preparations helped restrain buyers, brokers said. Little speculative inspiration was found in Far Eastern news and German-Russian war bulletins.

The tax picture was further clouded by the Bethlehem Steel statement, published after the close, which revealed that, due to exceptionally heavy provisions for income and excess profits imposts, June quarter net was cut to \$1.34 a common share compared with \$2.95 in the initial 1941 quarter.

Closing Bond Quotations

Table with columns for GOVERNMENT Treasury, Fed. Farm Mfg., Home Owners Loan, DOMESTIC, and ADD BOND LIST. Includes bond types like 3 1/2% 47-43, 4% 54-44, etc.

RAILROADS AGAIN LEAD BOND MART

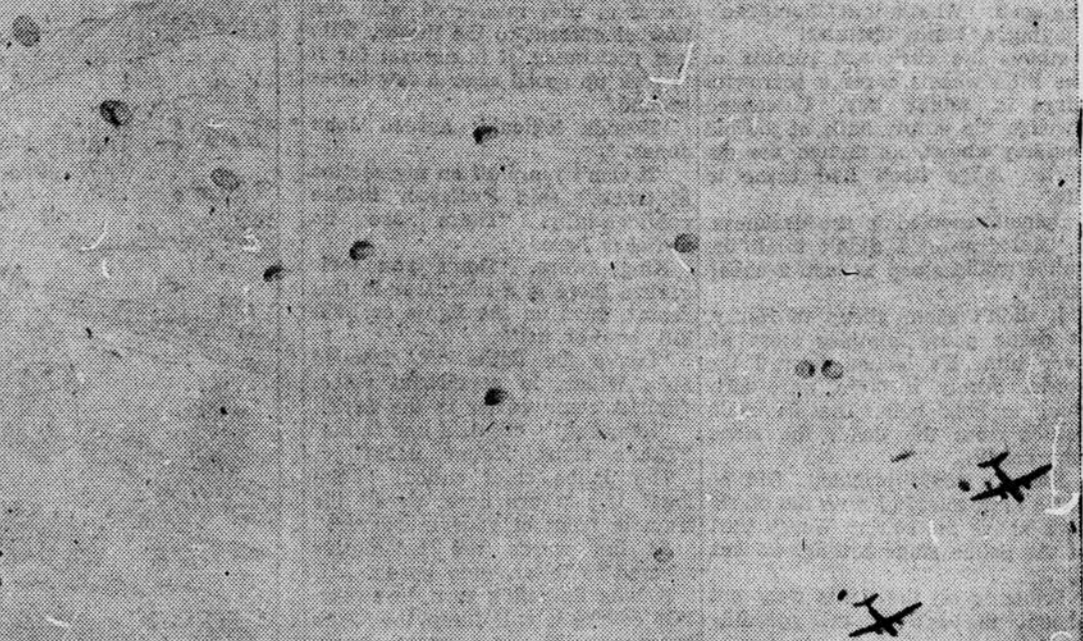
Slight Changes Registered in Other Securities; Japs Stabilize

NEW YORK, July 31.—(AP)—Railroad issues had a fairly good day in the bond market but other main groups were only slightly changed on average.

Closing Stock Quotations

Large table of stock quotations with columns for company names and prices. Includes Adams Exp, Air Reduct, Alaska Jun, etc.

'CHUTERS' CAPTURE VIRGINIA AIRPORT



Members of the Second Parachute Battalion from the Marine Base at Quantico, Va., carry out a sham attack on a rural airport near Fredericksburg, Va. Forty-two chuters under command of Capt. Robert H. William leaped from 750 feet, landing in 50 seconds, and captured the airfield.

Army Orders

WASHINGTON, July 31.—The War Department has released the following orders, dated July 28: COLONELS CanSee, R. C. Air Corps, Washington, to command of 4th Air Support Command, Hamilton Field, Calif.

CHICAGO LIVESTOCK

CHICAGO, July 31.—(AP)—Reductions in receipts brought stronger prices only to heavy butchers today as light and medium weight hogs sold at weak to 10 cents lower values, but failed to halt the downward trend in cattle prices.

NEW YORK DRYGOODS

New York, July 31.—(AP)—unfilled orders of men's wear woolen piece goods were estimated today to be at the highest levels in history.

RICHMOND LIVESTOCK

RICHMOND, Va., July 31.—(AP)—(USD.)—Livestock: Hogs—steady. Top 11.25. Good and choice 180-225 lbs. 11.05-11.25.

BOND AVERAGES

Table showing bond averages for various categories like Net change, Tuesday, Previous day, etc.

FOREIGN EXCHANGE

NEW YORK, July 31.—(AP)—The Hong Kong dollar rose to the New York high at 25.32 cents to the U. S. dollar today.

WHEAT

CHICAGO, July 31.—(AP)—Wheat prices continued to drift lower today, taking a definitely downward trend late in the session after fluctuating above and below previous closing levels most of the time.

NEW YORK SUGAR

NEW YORK, July 31.—(AP)—World contract sugar rose 9 to 12 1/2 points today on buying attributed to threatened shipping difficulties.

NEW YORK COTTON

NEW YORK, July 31.—(AP)—Commission house liquidation and New Orleans cotton price pushed cotton futures down for final losses of 27 to 35 points.

WHEAT

CHICAGO, July 31.—(AP)—Wheat prices continued to drift lower today, taking a definitely downward trend late in the session after fluctuating above and below previous closing levels most of the time.

WHEAT

CHICAGO, July 31.—(AP)—Wheat prices continued to drift lower today, taking a definitely downward trend late in the session after fluctuating above and below previous closing levels most of the time.

WHEAT

CHICAGO, July 31.—(AP)—Wheat prices continued to drift lower today, taking a definitely downward trend late in the session after fluctuating above and below previous closing levels most of the time.

WHEAT

CHICAGO, July 31.—(AP)—Wheat prices continued to drift lower today, taking a definitely downward trend late in the session after fluctuating above and below previous closing levels most of the time.

WHEAT

CHICAGO, July 31.—(AP)—Wheat prices continued to drift lower today, taking a definitely downward trend late in the session after fluctuating above and below previous closing levels most of the time.

WHEAT

CHICAGO, July 31.—(AP)—Wheat prices continued to drift lower today, taking a definitely downward trend late in the session after fluctuating above and below previous closing levels most of the time.

WHEAT

CHICAGO, July 31.—(AP)—Wheat prices continued to drift lower today, taking a definitely downward trend late in the session after fluctuating above and below previous closing levels most of the time.

WHEAT

CHICAGO, July 31.—(AP)—Wheat prices continued to drift lower today, taking a definitely downward trend late in the session after fluctuating above and below previous closing levels most of the time.

WHEAT

CHICAGO, July 31.—(AP)—Wheat prices continued to drift lower today, taking a definitely downward trend late in the session after fluctuating above and below previous closing levels most of the time.

WHEAT

CHICAGO, July 31.—(AP)—Wheat prices continued to drift lower today, taking a definitely downward trend late in the session after fluctuating above and below previous closing levels most of the time.

WHEAT

CHICAGO, July 31.—(AP)—Wheat prices continued to drift lower today, taking a definitely downward trend late in the session after fluctuating above and below previous closing levels most of the time.

WHEAT

CHICAGO, July 31.—(AP)—Wheat prices continued to drift lower today, taking a definitely downward trend late in the session after fluctuating above and below previous closing levels most of the time.

WHEAT

CHICAGO, July 31.—(AP)—Wheat prices continued to drift lower today, taking a definitely downward trend late in the session after fluctuating above and below previous closing levels most of the time.

'POW-O-LIN RELIEVED MY MISERABLE SUFFERING,' DECLARES MRS. MAITLAND



Well known Raleigh Resident Makes Statement In Order That Other Sufferers May Know About This Medicine That Did So Much For Her. Thousands of Carolinians Praise It.

Suffering from acid indigestion, dizzy headaches, nervousness and a tired, let-down, miserable feeling that she couldn't seem to shake off, and being disappointed in everything she tried, Mrs. H. C. Maitland, well known resident of 131 E. Martin St., Raleigh, N. C., states: 'Everything I ate seemed to sour on my stomach, cause gas pains, bloating and dizzy headaches that often made me feel faint and wobbly. I would belch hot, sour acid liquid that would sometimes nearly strangle me and the pressure from gas was so terrific I would have to gasp for breath. Toxic wastes clogged my intestines and I had to take strong purgatives for constipation until I felt I couldn't swallow another vile dose of these upsetting medicines. I was so nervous, sound sleep was impossible and I would get up feeling I couldn't do my housework. 'Pow-o-lin was recommended. The very first bottle brought me grand relief. I now eat anything I want and do not fear the gripping gas pains, acid indigestion and distress from dizzy, weak headaches. Pow-o-lin has my everlasting thanks. It is the best medicine I ever saw.'

Pow-o-lin is a liquid, purely herbal laxative preparation, for the relief of such distress as plagued Mrs. Maitland when brought on by faulty bowel elimination. Pow-o-lin is sold and recommended by TOMS DRUG STORE

RAPID PACKAGE DELIVERY

Between Wilmington and Jacksonville North Carolina Only Packages of 150 lbs or less accepted for Transportation FOR FURTHER INFORMATION Wilmington Jacksonville Dial 3311 Dial 3226

By William Ritt and Clarence Gray

BRICK BRADFORD

IT IS TO THIS LAND THAT THE BOILING STREAM BROUGHT IMPAK AND HIS PEOPLE - THAT IS HOW OUR RACE CAME TO THIS ISOLATED REGION!

SAVANNAH TURPENTINE

SAVANNAH, July 31.—(AP)—Turpentine 47 3/4 to 48; offerings 218; shipments none; stock 15,413. Receipts 572; shipments none; stock 130,890.

NEW YORK SEAT

NEW YORK, July 31.—(AP)—Sales of a membership in the New York Stock Exchange was reported today at \$35,000, up \$3,000 from three sales two days ago.

CHARLOTTE COTTON

CHARLOTTE, July 31.—(AP)—Spot cotton 15.95

