

96TH C. A. COAT OF ARMS OKEHED

Consists Of Shield Of Artillery Red Transversed By Bands Of White

The coat of arms of the 96th Coast Artillery has been approved by the War department, according to Lieut. Col. C. R. Jones, regimental commander. It consists of a shield of artillery red, transversed by bands of white (argent) symbolic of searchlight beams. In the center is a gold colored shell. The regimental motto, "Industry and Victory" appears on a scroll under the shield to complete the coat of arms.

The distinctive insignia to be worn by the men in the regiment is the center of the coat of arms. It consists of a one-inch red square with a white border and in the center a gold shell. Ordinarily, regimental coat of arms and insignia have some relation to the past history of a regiment, but the 96th, being a new regiment had to choose as distinctive a shield as possible.

The 96th was activated as a unit of the Regular Army at Camp Davis on April 5, 1941. It did not, however, receive any selectees until July 25, when the first troop convoy arrived from Fort Dix, N. J. Final mobilization was completed in August. The Third Battalion has just completed the period of basic training. Most of the men in the regiment are from New York and vicinity, therefore it is usually referred to as the New York-New Jersey Regiment.

Older units in the U. S. Army have symbolic figures and forms denoting their origin. Those who can trace their beginning as far back as the Revolutionary War may have a British Lion, the cross of St. George, or if a New England regiment, a rattlesnake coiled to strike.

The 96th Insignia will be worn on each shoulder strap of officers' shirts when the service coats are not worn, and on each shoulder strap of enlisted men's and officers' coat when worn and on the left side of field caps. The entire coat of arms is at present being painted by the Quartermaster Corps.

Air Corps Now Firing Along Coastal Ranges

In view of the fact that the Army Air Corps is now opening and operating machine gun ranges along the coast of the Carolinas at Murrell's Inlet, S. C., Charleston, S. C. and Wilmington, these locations have been declared danger zones for watercraft and civilian usage by the War department.

The order is effective immediately and for an indefinite period. Army aircraft in operation will patrol the target area before commencing fire and "buzz" watercraft seen in or near the target area thereby giving notice that practice is about to begin.

All watercraft, upon being warned by the buzzing sound, made when the pilot opens and closes the throttle of his ship, shall immediately leave the vicinity and remain at such a distance that it will be safe from falling projectiles.

Hinton Files Action Against Power Concern

J. O. Hinton, of Wilmington, has filed suit against the Tide Water Power Co., asking rental charges of \$3,500 and the return of certain properties near Wrightsville Sound. According to the complaint filed with T. A. Henderson, clerk of superior court, the property was taken over by the Wilmington Seacoast railroad about 1888 under the right-of-way law for railroads. He contends that since the railway, now owned by the Tide Water, has been discontinued the right-of-way law no longer takes effect and the property should be returned to him.

Also a substitution has been built on part of the property near Wrightsville sound and he asks that this also be returned to him.

Camp Gibbins Detail Recovers Army Auto

A detail of men from Camp Gibbins yesterday was sent to recover the reconnaissance car, missing from the camp since Friday afternoon, which was found on the Southport road, two miles south of the intersection of S 17 and NC 24.

How the reconnaissance car got there from the camp is still a mystery. It was reported to military authorities by C. Ed Taylor of Southport.

QUAKE HERO

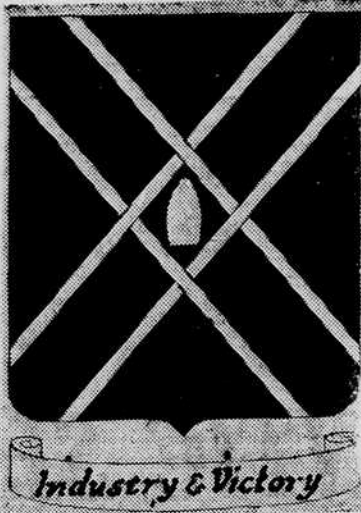
CAIRO, Dec. 20. — (AP) — A New Zealand officer tells this one:

He encountered an Italian colonel captured in Libya, noted the three rows of medals on the prisoner's tunic and commented:

"You must have been in a lot of wars to get all those medals."

The colonel replied: "Only the first row is for wars. The other two rows are for earthquakes."

96th C.A. Insignia



Above is shown the Regimental coat of arms for the Ninety-Sixth Coast Artillery located at Camp Davis, which has just been approved by the War department.

CAMP DAVIS VOLLEY FIRE

COMMENDATION

Camp Davis personnel is proud of the record of its troops in the recent maneuvers. A letter from Lieut. Col. R. V. Lee, commanding, First Army Replacement Depot reads, citation: The 6th Provisional Truck Company, Captain Matthew A. Hutmaker, commanding, composed of personnel from the 95th and 96th Coast Artillery regiments was organized and assigned to this depot during the First Army maneuvers and GHQ-directed maneuvers. Although many of the drivers were Selective Service men of short military experience, this company performed throughout the maneuver period in a most commendable manner. It transported approximately 14,000 casualties from this depot to units in the field, moved the entire depot on two occasions, and travelled over 108,000 truck miles under all conditions without an accident. Working long hours under trying conditions, the personnel of this company were always ready for any assigned task. Their attention to duty, cheerful and willing cooperation were an inspiration to the other members of this command and contributed in a very large measure to the successful operation of this depot.

ITS 7 AND UP

The sizes of Army military "military" helmets are in the following percentage of the total order:

Size 6 7-8	15.20%
Size 7	23.60%
Size 7 1-8	24.90%
Size 7 1-4	18.40%

The new type "tin top" features a fibre-type lining which can be worn alone as a headgear when the steel protection is not needed.

CHRISTMAS ACTIVITIES

With the cooperation of the regimental and unit chaplains a program of holiday activities has been worked out for both Camp Davis and Wilmington, by Post Chaplain Wallace I. Wolverton. Religious services will be available on the post and in town for military personnel. Christmas trees will be in evidence throughout the camp and two major Christmas parties, with presents, will be staged at both the white and colored service clubs. Last but by no means least gifts to the soldiers are being secured by the U. S. O. and other groups.

If you should happen to listen to group singing, by soldiers, of appropriate holiday songs that is just a portion of this well planned program.

VEGETABLE BUTTONS

Yes it's true and the Army is the customer. From Ecuador and Columbia, where the supply is virtually inexhaustible, the Army has purchased 2,592,000 "vegetable ivory" buttons. They come from the seeds of the tagua palm tree and will stand up under tremendous pressures, electric steaming and sewing machine use.

TRAMP!, TRAMP!, THE BOYS DO MARCH

Since the start of the present emergency, not the war, the War department has bought 16,000,000 pairs of shoes. Each soldier requires during his first year a minimum of ten pairs of shoes; in use, on hand in camps and depots, and on order or in the process of being ordered. More than 142 sizes and widths of shoes are required. Marching soldiers wear out good shoe soles in 10 days.

PASSTHE SPUDS

The mess halls of Camp Davis, where good foods make the rules, are a link in the Quartermaster's job of feeding the present Army. And it is a job, for example, it requires a field about 70 miles square to grow the potatoes used by the Army in a year. If the canned vegetables were to be piled one on top of the other, the pile would nearly be 9,000 miles high. That, of course, doesn't count the fresh green vegetables. It requires a whole steer about every six seconds since the annual purchase amounts to 580,000 head of beef cattle. Each man, of the 1,800,000 Army, eats about six pounds of food a day.

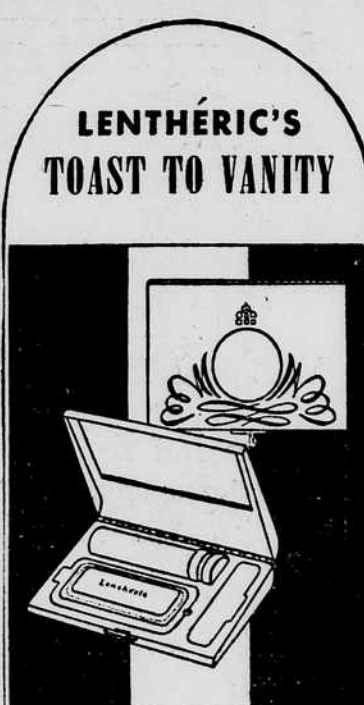
ANOTHER SHOW FOR CHRISTMAS DAY

With rounds of applause still in the air for the last show the soldiers of this post are looking, with pleasure, to the next USO traveling unit which will appear Christmas Day. This marks the third unit for the month.

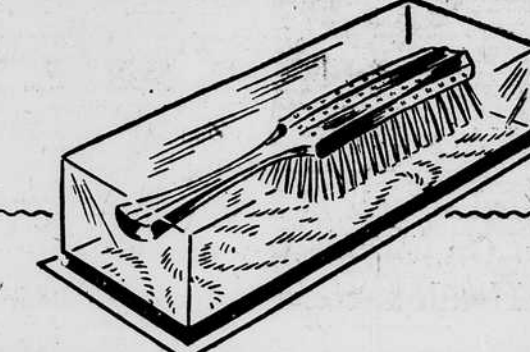
Gift Suggestions

For Last Minute Shoppers

SAUNDERS



LENTHÉRIC'S TOAST TO VANITY



NEW! DIFFERENT!

Jewelite

-the Aristocrat of Plastics!

Brushes and brush sets made of a sensational new liquid-clear plastic in exquisite jewel tints! Choice of colors to match your dressing table accessories: Crystal, Emerald (pale green), Sapphire (soft blue), Ruby (rose pink). Styled by Pro-phy-lac-tic, America's leading brush house. Bristled with long-lasting, water-resistant Proton. From \$1.50 to \$10.00.



Jewelite

BY PRO-PHY-LAC-TIC
makers of fine brushes since 1865

Vanity is paid homage to by LENTHÉRIC'S "Triplikit" — an exquisitely designed case which offers its proud owner the triple requisites to make-up art. A full size lipstick supplements rouge and a compartment for loose powder in a gleaming gold plated case contrasted by brushed gold and engraved in a rhythmic scroll design.

To make your gift of this beautiful vanity really personal, you may have her monogram engraved in the center of the design.

\$6.50

DOROTHY GRAY

New Week-End Kit \$10



Looks like an expensive handbag. Grand for propping up and primping. Mirror fastened to top. Contains 7 Dorothy Gray items for skin-care and make-up, plus comb. In beautiful quality fabrikoid, with peach water-proof fabrikoid lining. \$6. Other Dorothy Gray beauty cases, \$5, \$5, \$7.50 and on up to \$25

- LARGE ASSORTMENT Dolls 69c — \$1.29 — \$2.49
- BUCK PRIVATE Cutex Sets \$1.00
- GENUINE BADGER RUBBER SET Shaving Brushes \$1.25 to \$6.00
- LARGE LUXOR ROSE AMERICAN BEAUTY Bath Powder \$1.00
- YARDLEY Shaving Bowl \$1.00
- LUCITE SET Comb and Brush \$3.95 - \$5.95



LARGE ASSORTMENT Evening in Paris COMPACTS THE GIFT FOR "HER" \$2.95 ea.

Starring EMERAUDE!

This lovely, graceful Coty Gift Box features Emeraude, the jewel fragrance. In matching scents: "Air-Spun" Face Powder, Rouge, Lipstick, "Informal Fragrance." A gift of lasting luxury!

\$4.50

COTY

COME here for Whitman's CHOCOLATES!

SPECIAL XMAS PACKAGES

IT WOULDN'T BE CHRISTMAS WITHOUT THEM!

Take Santa's tip! Delight everyone on your list—and in your home! Choose from our gaily-wrapped Whitman's boxes (fresh from the maker) . . . for friends and family . . . as the sweetest of "extra" gifts . . . as symbols of appreciation for all who serve you gladly through the year.

THE SAMPLER, \$7.50, \$5, \$3, \$1.50 — chocolates world-famous for their goodness!

THE FAIRHILL, best at \$1 a pound, 2, 3 and 5-lb. sizes. Other luscious assortments!

1-LB. BOX DELICIOUS Chocolate Covered Cherries 21c

ASSORTED Hard Candies, pkg. 25c

WE ALSO HAVE A COMPLETE ASSORTMENT OF MARTHA WASHINGTON CANDIES From \$1.00 to \$5.00

Evening in Paris for CHRISTMAS

A glorious gift box that holds Evening in Paris Perfume, Rouge, Lipstick, Talcum and Eau de Cologne. \$2.95

Nestling in a bed of satin, she'll discover Evening in Paris Perfume, Face Powder, Lipstick, Talcum and Single Vanity. \$5.00

The star-shaped Christmas package holds a bottle of intriguing Evening in Paris Perfume. \$1.25

The ribboned gift set contains Evening in Paris Perfume and Atomizer, Talcum, Eau de Cologne and a dainty Single Vanity. \$4.00

OTHER GIFT ENSEMBLES \$1. to \$15.

Electric POP-CORN POPPER \$1.49

YARDLEY'S TALCUM POWDER 55¢ and \$1.10

WRAP YOURSELF IN A FRAGRANT CLOUD!

Shower yourself with a fresh, down soft mist of this exquisite powder after bathing—and feel wrapped in silk for hours. Extra fine, soothing and protective, with the cool, distinctive fragrance of English Lavender. In our Yardley of London Shop—Floor.

Yardley products for America are created in England and finished in the U.S.A. from the Original English Formulae, combining imported and domestic ingredients.

NEW Yorker Heating PADS \$1.49

EASTMAN'S KODAKS THE IDEAL GIFT \$1.50 to \$11.95

GIFTS FOR THE Smoker

CIGARETTES

CAMELS-CHESTERFIELDS-OLD GOLDS RALEIGHS and KOOLS

Xmas Wrapped \$1.23 Carton

CIGARS

Box of 25 Nuricas \$1.00 Boxes of 50 \$2.00

Hava Tampa Box of 25 \$1 Box of 50 \$2

Tampa Nugget Box of 25 \$1 Box of 50 \$2

King Edward Box of 25 \$1.00 All Christmas Wrapped

LB. CAN PRINCE ALBERT TOBACCO Xmas Pkg. 69c

SHEAFFER FOUNTAIN PENS \$1.00 to \$10.00

WILLIAM'S MEN'S SETS ea. 89c