

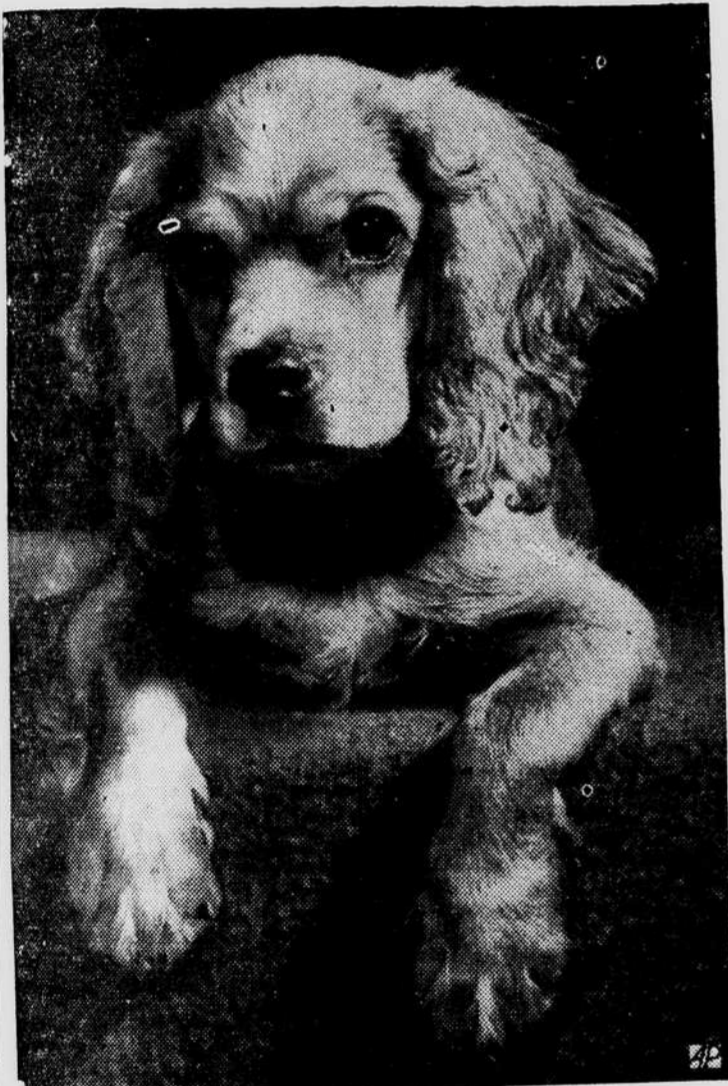
# THE ASSOCIATED PRESS NEWS IN PICTURES



**PULLING FOR UNCLE SAM**—These sweating men pull a water pump through dense jungle as United States soldiers, sailors and marines build a base on a South Pacific island. Water pumps were used early in construction, later for fire fighting.



**YANKEE "BIG BOYS"**—These sluggers are keeping New York Yankees on top of the American League. Left to right: Catcher Bill Dickey, Second Baseman Joe Gordon, First Baseman Buddy Hassett, Outfielders Tommy Henrich, Joe DiMaggio, Charley Keller.



**SOLEMN PUP**—"Freckles," grandson of prize-winning "My Own Bruce," poses solemnly for this photo at Ellington Field, Tex.



**PUSSY'S NOT AFRAID**—A cat climbs about unworried by the grim visage of this figure used in a New York war parade.



**NEW SLOGAN**—Jerry McNamara carries the slogan "Gentlemen Prefer Bonds" at the opening of the war bond and stamp drive at Steeplechase Park, Coney Island, N. Y.



**STEAL THE SHOW**—Boy triplets Norman, Ralph and Perry Dow (left to right) stole the show in a Cambridge, Mass., court hearing when they were adopted by their grandparents.



**NAVY HERO WITH MOVIE STARS**—Lt. John D. Bulkeley (foreground, hand to chin) sits with moviedom's Lt. Robert Montgomery (left) and Jimmy Cagney (right) at a night club.



**COTTON HAT**—Here's a non-priority bonnet of flax colored cotton, twisted and strung with vari-shaped wooden beads.



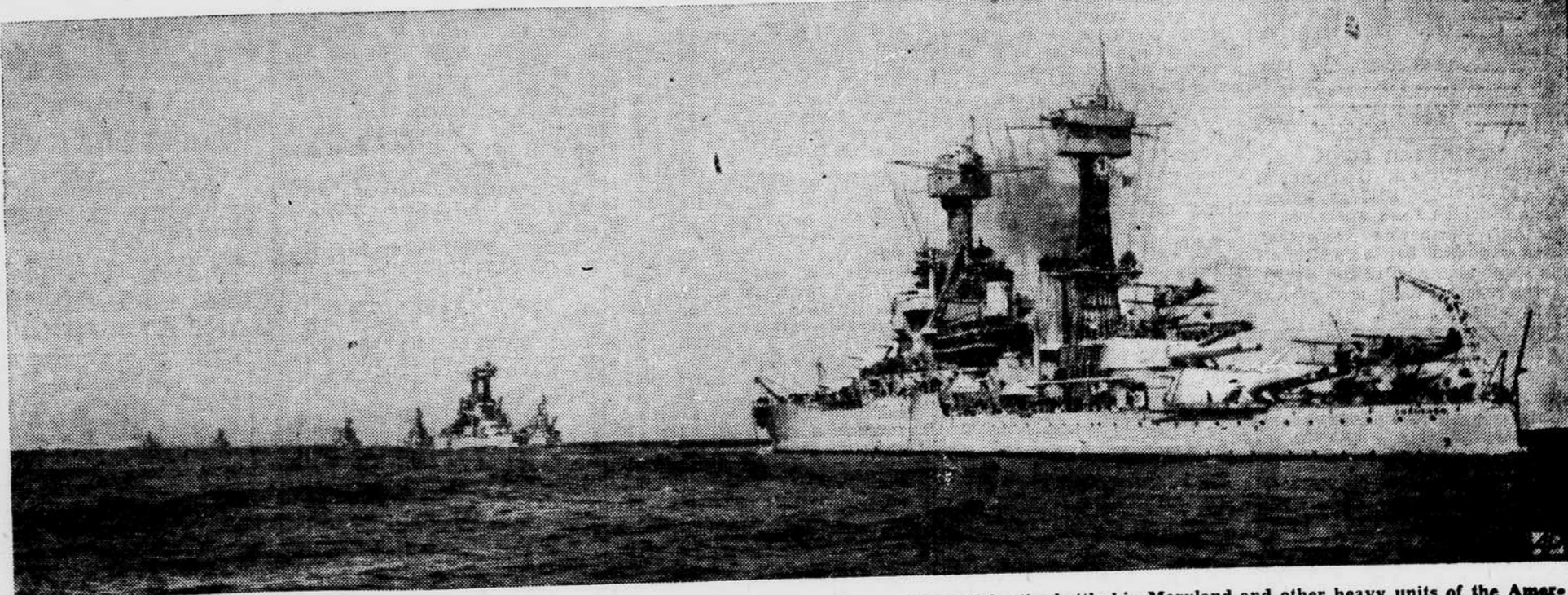
**DINNER CHAT**—John D. Rockefeller (left) chats with Capt. Jose R. Alzamora of Peru at a dinner in New York City hotel.



**SOLDIERS AT EASE**—Two soldiers loll in their chairs as Patsy Koops models a white picnic suit at Beverly Hills, Calif.



**SALESWOMAN**—Movie Actress Lana Turner, wearing war stamps corsage, sold war bonds and stamps at San Francisco, Calif., as part of a tour to boost Uncle Sam's treasury.



**AMERICAN NAVAL MIGHT**—The United States Battleship California cuts the sea followed by the battleship Maryland and other heavy units of the American fleet. Before the United States' entry into the war the nation had 17 battleships and was building 15. The California and the Maryland were launched in 1921.