

BEAR CREEK MINE TO SHIP ORE SOON

Copper Concentrate Will Be Sent To Cartrett Plant In N. J.

The first shipment of copper ore concentrate from Bear Creek Copper Mines, Inc. in Chatham county is expected to be made Nov. 1 to the Cartrett plant in New Jersey, it was reported Saturday after a meeting of the board of directors of the corporation.

Between 90 and 100 tons of raw ore have been laying on the ground near the first operated mine in North Carolina for the past several weeks, refining being held pending installation of a flotation system to extract ore concentrate.

Establishment of the flotation system for processing the critical war metal was made on the recommendation of three outstanding state geologists, who at a conference with mine officials, indicated that according to history of surveys of copper in this state the mine has been sunk in the most productive area.

It was on their recommendation that the mine owners decided to change from surface mining to shaft mining in order to reach the contents of the deposit.

The copper ore, it is reported, is averaging 12 per cent at a depth of 30 feet, to which the modern shaft has just been sunk, as against 7.68 per cent four feet underground.

U. S. Patrol Vessel Is Lost In Atlantic

WASHINGTON, Oct. 16—(AP)—Loss of the U. S. S. Moonstone, a patrol craft, in the Atlantic on the night of October 15-16 was announced by the Navy today.

The little vessel went down as the result of collision. No details were disclosed. All of the personnel were rescued.

Lt. W. R. S. Curtis, Greenville, S. C., commanded the craft, which carried a complement of about 50 men.

BOMBER CRASHES

BLATHE, Cal., Oct. 16—(AP)—A four-engine bomber from the Blythe Army air base crashed in the mountains west of here last night, officials of the base reported today. Lt. John R. McCarty, public relations officer, said all 10 men aboard the craft were believed killed.

Red Beard?



Skin tender, irritates easily. Get a comfortable shave with PERSONNA Precision Double-Edge Blades 10 for \$1.00 and worth it! GIFT BOX OF 50 FOR \$5.00

Slow-processed from Swedish Steel Hollow Ground—Leather Strapped Straight-razor Precision Kenness Micro-inspected for Uniformity Custom Quality Insures Comfort Better for Beards of Every Kind

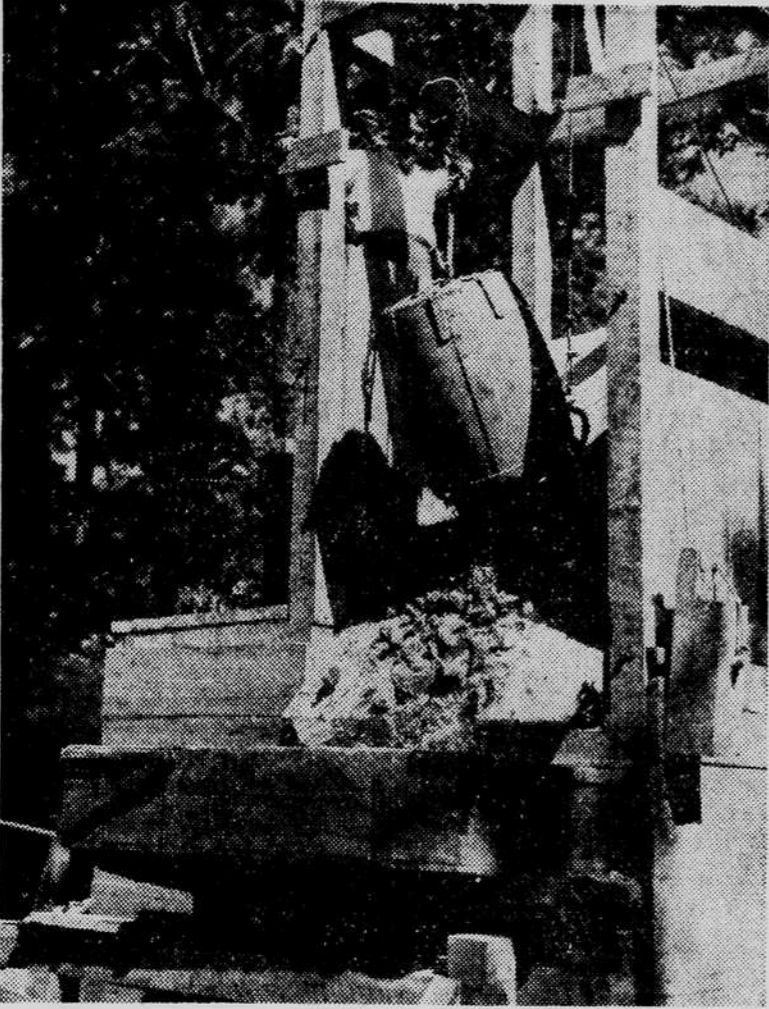
At Your Door



SUNSHINE LAUNDRY
135 Hanover Phone 2-3386

SUNSHINE LAUNDRY
135 Hanover Phone 2-3386

OPERATE COPPER MINE



Copper ore is shown here being extracted from the Bear Creek Copper Mines, located 25 miles northeast of Sanford on Bear Creek in southwest Chatham county. The bucket, which is shown depositing ore on the floor of the overhead, extracts half a ton of ore at a haul. The Bear Creek mine, whose incorporators maintain headquarters in Wilmington, is said to be the first operated copper mine in North Carolina.

CITY ADOPTS SET OF EMPLOYEE RULES

(Continued From Page One)

val by the City Manager; unused portions of leave will expire at the close of the next succeeding fiscal year, except in unusual cases; employees voluntarily separated from service will be entitled to compensation for unused portions of their leave.

Sick Leave

Any of the unused sick leave (one calendar day for each month of service) may be accumulated from one fiscal year to the next to a maximum of 60 days carrying full pay. After 60 days have been accumulated, an employee in service less than 10 years may continue to accumulate an additional 60 days, for which he will be paid 50 per cent of his salary; after 10 years of service, he is entitled to accumulate sick leave with full pay up to 120 days. After employees have been with the city 20 years, they may begin to accumulate an additional 20 days' sick-leave at half-pay.

In order to put the matter of leave on a definite basis, the service record of each present employee, up to July 1, 1943, will be compiled, and the amount of sick leave which would have been accumulated without sickness determined. This amount will be divided in half.

Leaves of absence without pay may be granted by the department heads with the approval of the City Manager, for a period not to exceed one year.

Full-time, regular employees inducted into the armed forces may expect to return to their jobs within a 60-day period following honorable discharge, providing the positions still exist, and they are otherwise qualified.

Absence from work without leave gives the department head the right to declare the position vacant, unless the absence is satisfactorily explained.

In case of death, or serious illness in the immediate family, regular employees may be granted leave of absence with pay for a period not to exceed three days.

System of Reports

The City Manager will install a system whereby department heads will report semi-annually on the performance of all employees. The reports will be carefully maintained under his supervision, and will serve as a guide in the matter of promotions, demotions,

sions, and dismissals. A regular, full-time employee shall receive a seven-day notice of dismissal, or shall be paid for one week's work if separated at the time of notice of dismissal, provided he has been employed by the city for one consecutive year or more.

Reduction in Employees

When it is necessary to reduce the number of employees on the city pay roll, because of lack of work or funds, the City Manager, conferring with department heads, will undertake thorough investigation of the problem. In determining the employees to be affected, the service ratings, and length of service to the city, will be considered.

Quoting directly, "City employees are neither appointed to, nor retained in, the service upon the basis of their political activities. In return, while city employees may exercise their right of suffrage as citizens and engage in normal political activities, it is deemed for the best interest of the municipal government that they do not participate in municipal election campaigns. This applies whether an employee is on or off duty."

The City Manager will welcome suggestions from department heads and employees for improving the personnel system. Exceptions to the rules may be made at the discretion of the City Manager in cases involving exceptional circumstances.

Police department, fire department, and city-county employees remain subject to the action of their respective civil service commissions.

According to Mr. Nichols, there are at present 91 persons whose tenure of service with the city exceeds 10 years. One employee has worked for the city continuously for 36 years.

In connection with initiation of the new program, central personnel files and records are to be established that will include complete information on every city employee. Maintenance of the files, and details concerning the handling of personnel and ratings data will be in charge of Fred Rippey, of the city staff.

Of the 308 battles and engagements of the Revolutionary War, 92 took place on the soil of New York state.

Could Cleopatra Drink a Pearl With Stomach Ulcer Pains?

An intriguing story of Cleopatra is the one where an admirer praised the beauty of two of her pearls, whereupon she dropped one into a glass of wine and drank it. She would hardly have done this had she suffered after-eating pains. Those who are distressed with stomach or ulcer pains, indigestion, gas pains, heartburn, burning sensation, bloating and other conditions caused by excess acid should try Udgas. Get a 25c box of Udgas Tablets from your druggist. First dose must convince or return box to us and get DOUBLE YOUR MONEY BACK, where.

At Saunders and drug stores everywhere.

RAILROAD PAY RAISE ISSUE GIVEN TO NEW BOARD BY ROOSEVELT

(Continued From Page One)

ing in this dispute and since the workers had received a 10 1/2 per cent increase before they were not entitled to any more under the little steel formula.

Some brotherhood leaders called the 4 cent decision an "insult." The brotherhood chairmen plan to meet in Chicago Oct. 22 to decide what to do about it.

Vinson, in a formal report today said he would "not disapprove the recommendation of a four-cent raise for the operating brotherhoods, to take effect Oct. 28."

If the new emergency board follows the pattern set by Vinson in the operating brotherhoods case, the higher paid men of the non-operating workers—such as machinists—could not expect to get substantially more than a four-cent increase. Lower-paid "non-op" workers, however, might get more, under the government's provisions allowing increases where wages actually are substandard.

ARGENTINE CHIEF HITS 'TAMPERING'

(Continued From Page One)

problems of inherent nationality must be solved by the master's house instead of by guests, whatever rights they may invoke.

"Many of the signers are, besides, connected with the extreme left as proved by their anti-social, anti-Argentine backgrounds documented by official records prior to the revolution. Some of them were acclaimed by communistic crowds."

"The government is animated by ample republican feeling as demonstrated justly by the publication of the manifesto; but it won't tol-

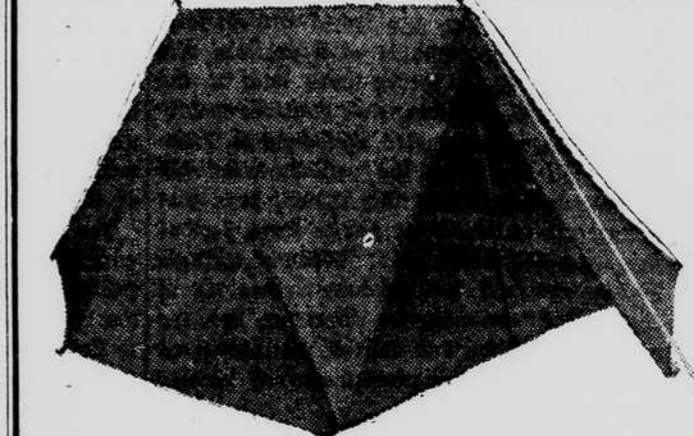
erate any tampering, even less will it accept impositions or polemics incompatible to the sovereignty of its representation. x x x x"

The manifesto was signed by 153 prominent leaders in the business, industrial and agricultural life of

Argentina. The number of persons holding government positions who signed it was not immediately known.

The government values a war plane pilot of \$100,000.

NO DRINKS—NO DELEGATE
EDENTON, N. C. (P)—Clerks of court in this district were asked to attend a meeting. The invitations read, "No whiskey will be served." One clerk showed up.



EVERY BOY WANTS A PUP-TENT

MAKE YOUR BOY HAPPY WITH A CAMP-PAL

Each Camp-Pal tent is made of heavy water - repellant canvas. Complete with tent poles, stakes and rope.
3 1/2 ft. high, 9 1/2 ft. overall length
READY TO SET UP!

LIST PRICE \$12.50—OUR PRICE \$10.95
AN IDEAL CHRISTMAS GIFT
THRIF-T-STORES Inc.
25 South Front Street

CITY ADOPTS SET OF EMPLOYEE RULES

(Continued From Page One)

val by the City Manager; unused portions of leave will expire at the close of the next succeeding fiscal year, except in unusual cases; employees voluntarily separated from service will be entitled to compensation for unused portions of their leave.

Sick Leave

Any of the unused sick leave (one calendar day for each month of service) may be accumulated from one fiscal year to the next to a maximum of 60 days carrying full pay. After 60 days have been accumulated, an employee in service less than 10 years may continue to accumulate an additional 60 days, for which he will be paid 50 per cent of his salary; after 10 years of service, he is entitled to accumulate sick leave with full pay up to 120 days. After employees have been with the city 20 years, they may begin to accumulate an additional 20 days' sick-leave at half-pay.

In order to put the matter of leave on a definite basis, the service record of each present employee, up to July 1, 1943, will be compiled, and the amount of sick leave which would have been accumulated without sickness determined. This amount will be divided in half.

Leaves of absence without pay may be granted by the department heads with the approval of the City Manager, for a period not to exceed one year.

Full-time, regular employees inducted into the armed forces may expect to return to their jobs within a 60-day period following honorable discharge, providing the positions still exist, and they are otherwise qualified.

Absence from work without leave gives the department head the right to declare the position vacant, unless the absence is satisfactorily explained.

In case of death, or serious illness in the immediate family, regular employees may be granted leave of absence with pay for a period not to exceed three days.

System of Reports

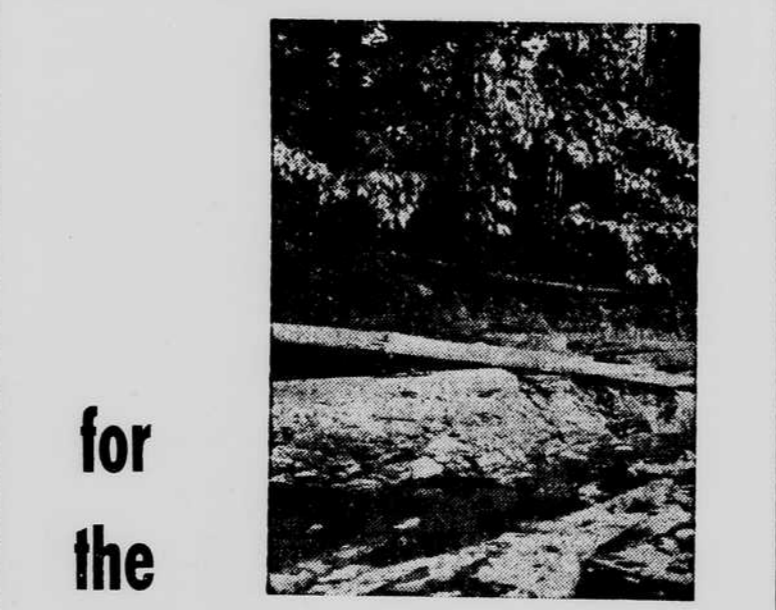
The City Manager will install a system whereby department heads will report semi-annually on the performance of all employees. The reports will be carefully maintained under his supervision, and will serve as a guide in the matter of promotions, demotions,

salary increases or decreases, separations from the service and other personnel status changes where such ratings will prove pertinent and of value in making intelligent and fair decisions. Development of the report form is said to be in process at the present time.

Promotions from one class or position to a higher class are to be made by department heads, subject to the City Manager's approval. Service ratings, along with seniority and other qualifying factors, shall determine an employee's merit for promotion.

The city government intends, where desirable, to transfer employees permanently or temporarily from one department to another where such transfers will result in more effective work and will lessen the necessity for making temporary appointments to handle peak departmental loads.

Demotions, as a penalty for disciplinary purposes, may be made by department heads, subject to the approval of the City Manager. The same applies to suspen-



for the GREAT OUTDOORS

Leather Jackets

Ideal for the fine brisk days of fall and winter are these leather jackets for little girls. In turf tan, brown, green.
Sizes 6-14
\$8.95



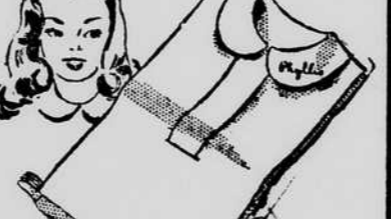
Jodphurs

To compliment that new leather jacket, she'll love a pair of jodphurs. In tan, brown, and green—she'll really ride in style.
Sizes 4 - 14
\$1.98 and \$3.98



Dickies

Children's Dickies are basic for practically every outfit. They look so fresh under sweater, suits and dresses. Yellow, blue, pink, white.
\$1.00



Children's Dept.—2nd Floor
Belk-Williams Co.

Pretty As A Picture

These lovely one and two piece dresses will make you forget the cares of this busy wartime life you are living. It's good for you to throw off your work clothes and dress up in a sophisticated, black dressy dress or a colorful, gay tailored dress. So booster your morale, stop in at Belk's Dress Department. In wool or silk, we have them from sizes 12-20 \$14.95 up

Belk-Williams Co.