

FINANCIAL NEWS

Stock Market Quotations

(BY THE ASSOCIATED PRESS)

Allegheny	2 1/2	Ligg and Myers B	82
Al Chem and Dye	2 1/2	Loews	64 1/2
Allis Chal Mfg	37	Lorillard	18 1/2
Am Can	35 1/2	Mont Ward	46 1/2
Am Car	31 1/2	Nash Kelly	15 1/2
Am Rail Mill	14 1/2	Nat Biscuit	21
Am Smelt and Ref	38 1/2	Nat Cash Reg	29 1/2
A T and T	160 1/2	Nat Dist	36 1/2
Am Tob B	70 1/2	Ny Cent	17 1/2
Anacosta	25 1/2	Nor Am Aviat	7 1/2
Arm Ill	39 1/2	Nor Pac	16
A C L	30 1/2	Packard	27 1/2
Atl Ref	4 1/2	Param J C	100 1/2
Aviat Corp	20 1/2	Penn R R	29
Baldwin	7 1/2	Pepsi Cola	50 1/2
B and O	38 1/2	Phillips Pet	44
Barnsdall	38 1/2	Pitt Ser and B	43 1/2
Bendix Aviat	60 1/2	Pure Oil	16 1/2
Beth St	13 1/2	Radio	10 1/2
Boeing Airpl	31 1/2	Radio K O	9 1/2
Borden	8 1/2	Rem Rand	17
Bull Mfg	29 1/2	Reynolds B	18
Burd Mill	15 1/2	Sears	13 1/2
Bur Add Mach	43 1/2	Socny Vac	29 1/2
Cannon Mills	36 1/2	Sou Pac	23 1/2
Case J I	49 1/2	Std Brands	30 1/2
Caterpillar	44 1/2	Std Oil N J	57 1/2
Chas and O	91 1/2	Stewart Warner	15 1/2
Chrysler	120	Swift	47
Coca Cola	16 1/2	Tex Co	27
Coml Credit	16 1/2	United Air	14 1/2
Coml Solv	22 1/2	United Corp	15 1/2
Consolidated	40	Unit Gas Imp	1 1/2
Cons Edis	59 1/2	U S Indus Chem	49 1/2
Cont Can	5 1/2	U S Rubber	57 1/2
Corn Prod	5 1/2	U S Steel	53 1/2
Curtiss Wright	15 1/2	U S Steel Ref	57 1/2
Curtiss Wright A	48 1/2	Vanadium	20 1/2
Dou Air	125	Vick Chem	2 1/2
Dow Chem	152 1/2	Va Caro Chem	1 1/2
Du Pont	162	Warner Pict	1 1/2
Eastman Kod	48 1/2	West Union A	47 1/2
Firestone	37 1/2	West El and Mfg	100 1/2
Gen Elec	40 1/2	Woolworth	39 1/2
Gen Foods	40 1/2	Final stock sales	2,236,780.
Goodrich	62 1/2		
Gen Mot	47 1/2		
Goodyear	33		
Int Harv	75 1/2		
Int Tel and Tel	16 1/2		
Johns Man	95		
Kennecott	30 1/2		

FINAL CURB QUOTATIONS

Am Marconi	1 1/2
Cities Service	15 1/2
Colon Dvnt	4 1/2
El Bond and Sh	9

FOREIGN EXCHANGE

NEW YORK, June 12.—Closing foreign exchange rates follow (Great Britain in dollars, others in cents):

Canadian dollar in New York	open market 9 5-16 per cent discount or 90.68 3-4 U. S. cents, unchanged.
Europe: Great Britain official	buying \$4.02, selling \$4.04.
Latin American: Argentina free	2493 up 1/16 of a cent, Brazil free 5.20; Mexico 20.65.

AVERAGE MIDDLING PRICE

NEW ORLEANS, June 12.—The average price of middling 15-16 inch cotton today at ten designated southern spot markets was 49 cents a bale higher at 21.49 cents a pound (new season high). Average for the past 30 market days 21.08, middling 7-8 in. average 20.33.

N. C. EGGS AND POULTRY

RALEIGH, June 12.—(NCDA)—Egg and poultry markets steady.

Raleigh—U. S. Grade A large (clean white) 32; Hens, all weights, 20 to 23.

Washington—U. S. Grade A large 36 to 37; Broilers and fryers 31 1-2 to 32.

HOG MARKETS

RALEIGH, June 12.—(NCDA)—Hog markets steady with tops at 13.55 at Rocky Mount and 13.85 at Richmond.

CHICAGO BUTTER, EGGS

CHICAGO, June 12.—(UP)—Butter, receipts 1,267,711; eggs, receipts 14,345.

CHARLOTTE SPOT

CHARLOTTE, June 12.—Spot cotton 21.00.

TODAY'S PATTERN

Open High Low Last

July	21.23	21.34	21.23	21.32
Oct	20.56	20.64	20.56	20.61
Dec	20.31	20.39	20.31	20.34
Mar	20.05	20.15	20.05	20.10
May	19.81	19.90	19.80	19.84

NAVAL STORES

SAVANNAH, Ga., June 12.—Turpentine 77 3-4 cents a gallon; Offerings 150 (50 gal. bbls.); Sales 3,959 gallons; Receipts, 59 barrels; Shipments, none; Stocks, 33, 739 barrels.

Rosin, (100 lb. drums), offerings 48; Sales, 48; Receipts, 140; Shipments, none; Stocks, 12,519.

Quote: B 4.85; D 4.90; E 5.28; F G H I 5.50; K 5.60; M 5.57; N 5.65; W 6.10; WW and X 6.35.

Extra-Fast Relief HEADACHE-NEURALGIA

Headaches, the pains of neuralgia, muscular aches and functional periodic pains are quickly relieved by "BC". Why? Because the prescription-type ingredients in "BC" are readily assimilated. Such quick action naturally speeds relief.

Getting Up Nights Makes Many Feel Old

Do you feel older than you are or suffer from fatigue, dizziness, backache, nervousness, Leg Pains, Dizziness, Swollen Ankles, Rheumatic Pains, Burning, scanty or frequent passages? If so, remember that your kidneys are vital to your health and that these symptoms may be due to non-organic and non-prescription kidney and bladder troubles—in such cases Cystex (a physician's prescription) usually gives prompt and complete relief by helping the kidneys flush out poisonous excess acids and wastes. Get relief from your aches and pains today. Take exactly as directed and see the results in your own particular case. Under our guarantee unless completely satisfied you simply return the empty package and get your money back.

Cystex money back guarantee. Only 35c, 75c, \$1.50 per package. Write for free literature.

BULL MARKET

SPURS SALES

NEW YORK STOCKS—Firm; motors, "peace" shares in demand. BONDS—Steady; rails rally. COTTON—Higher; mill buying.

CHICAGO WHEAT—Weak. Lag in buying interest. RYE—Weak. Lack of demand for cash grain. HOGS—Slow, generally steady. Top \$13.75. Holdovers 15,000.

CATTLE—Strictly good and choice steers strong, slightly higher. Top \$17.50.

NEW YORK, June 12.—A bull market in low-priced motors that spread to utility, automotive supplier and other civilian manufacturing shares and then broadened to carry prices generally to the highest since the war began gave the stock exchange its busiest day of the year today.

Allied advances in France and Italy, with their implication of a possibly earlier than expected European peace, sent speculators flocking into Wall Street to bid up prices of their favorites by fractions to more than two points.

Steels and other "blue chip" favorites were prominent in the rise, although the heavy volume was chiefly the result of large transfers of cheap motors and other equities under the \$10 level.

At 2,236,780 shares, volume was the best since Nov. 8, 1943, and compared with 849,257 Friday, the last previous full session.

The advance was one of the broadest of the year, with 696 higher, 161 unchanged and only 106 off of 963 issues dealt in. The Associated press 60-stock average shot up .7 of a point to 53.7, highest since Oct. 25, 1939.

The quality of leadership improved as the trend rose. U. S. Steel gained 1 7-8, Bethlehem 2 1-4, General Motors 1 5-8 and Chrysler 2 1-8, the latter two setting new 1944 peaks.

The long list of new highs included, with fractional gains, Du Pont, Willys Overland, Budd Manufacturing, Hupp Motor, Nash-Kelvinator, Graham-Paige, Continental Motors, Hayes Manufacturing, Studebaker, Hudson Motor, American Radiator, Crane Co., Philco and American Sugar.

Retailing, aircraft and oil shares also participated in the rise, as did the rails, but their gains were mostly under a point.

Transport loans continued their rally in the bond market. Cotton futures gained 30 to 60 cents a bale. Grains at Chicago, depressed by favorable crop prospects, were uneven. Wheat lost 3-8 to 1-2 cents a bushel, oats were unchanged to 1-4 lower and rye unchanged to 1-2 higher.

Ahead in the curb were Electric Bond Share, Cities Service, Carrier Corp., Republic Aviation, Phoenix Securities and Lake Shore Mines. Transfers here at 327,090 compared with 152,600 Friday.

NEW ORLEANS SPOT

NEW ORLEANS, June 12.—Spot cotton closed steady 50 cents a bale higher. Sales 817, low middling 18.15; Middling 21.30; Good middling 21.70; Receipts 1,655. Stocks 264,520.

NEW ORLEANS COTTON

NEW ORLEANS, June 12.—(UP)—Cotton futures closed steady 20 to 50 cents a bale higher.

Open High Low Close
Oct --- 21.39 21.48 21.39 21.46 up 10
Nov --- 20.58 20.64 20.57 20.61 up 7
Dec --- 20.34 20.42 20.34 20.36 up 4
Mar --- 20.09 20.15 20.08 20.10 up 5
May --- 19.82 19.91 19.81 19.85 up 4

When a girl's face is her fortune it usually runs into a neat figure.

RADIO

WMFD Wilmington 1400 KC

TUESDAY, JUNE 13

7:30—Family Ajar.
7:45—Musical Clock.
8:00—Daily War Journal.
8:15—Musical Clock.
8:30—Blue News Correspondents.
8:45—Rosa Rio.
9:00—The Breakfast Club.
10:00—Sweet River.
10:15—My True Story.
10:30—Let's Dance.
11:00—Breakfast Sard's.
11:30—Gil Martyn, News.
11:45—The Baby Institute.
12:00—Meditation Period.
12:15—Blue News.
12:30—National Farm and Home Hour.
1:00—Baukhage Talking.
1:15—Musical Revue.
1:25—News—Wilmington Star-News.
1:30—Living Should Be Fun.
1:45—Little Jack Little.
2:00—Kirkman's Corner.
2:15—The Mystery Chef.
2:30—Ladies Be Seated.
3:00—Songs by Burton Downey.
3:15—Hollywood Star Time.
3:30—Appointment with Life.
4:00—Organ Serenade.
4:30—Norman Show.
4:45—Time, Views the News.
5:00—The Sea Hound.
5:00—Terry and the Pirates.
5:15—Don Norman Show.
5:30—Treasury Star Parade.
5:45—Jungle Jim.
6:00—Hop Harrigan.
6:15—News—Wilmington Star-News.
6:30—Jerry Wayne and His Gulf Spray Gang.
6:45—Henry J. Taylor.
7:00—Let Yourself Go.
7:30—Your Job Reporter.
7:45—Sun-down Serenade.
8:00—Watch the World Go By.
8:15—Carolina Playboys.
8:30—Duffy's Tavern.
8:45—Silver String Hawaiians.
9:15—Voice of the Army.
9:30—Victory Parade of Spotlight Bands.
9:55—Coronet Story Teller.
10:00—Victory Grand Swing.
10:15—Chester Bowles, OPA.
10:30—Creeps by Night.

OVER THE NETWORKS

TUESDAY, JUNE 13 Eastern War Time P.M.

(Changes in programs as listed due to corrections by networks made due to

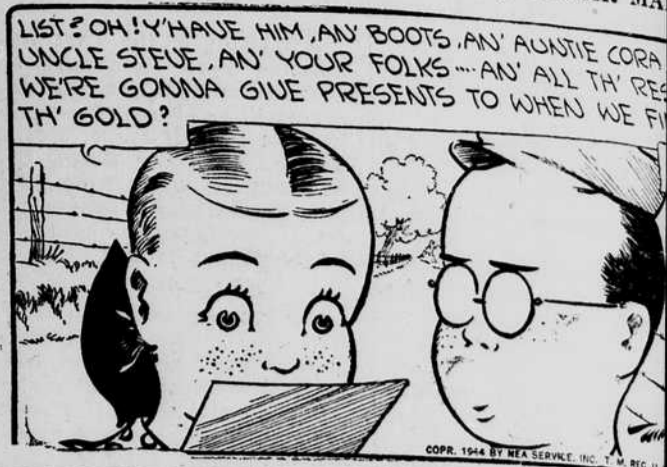
5:45—Front Page Farrell Serial—nbc
American Women, Drama Series—cbs
Captain Midnight's Sketch—nbc-basic
Serial Series for Kids—nbc-basic
6:00—News Report for 15 Mins.—nbc
Quincy Howe and News Time—cbs
Hop Harrigan, Children's Skit—biu
Fraydown Serenade—War—mbs
6:15—America's Serenade: Sports—nbc
Edwin C. Hill Commentary—cbs
Captain Jim Heat Spy Story—nbc
Dance Orchestra (15 minutes)—mbs
6:30—Jack Armstrong rept.—blu-west
Jeri Sullivan and Songs Show—cbs
News Time and Volney Howard—cbs
6:45—Lowell Thomas & Newsweek—cbs
World News and Commentary—cbs
Henry J. Taylor Comment—blu-basic
Capt. Midnight in repeat—blu-west
Repeat of Kiddies Serial—other mbs
7:00—Fred Waring's Time—nbc-basic
I Love a Mystery, Dramatic—nbc
Milton Berle, Yourself Go—biu
Fulton Lewis, Jr., Comments—mbs
7:15—War News from the World—nbc
John Nesbitt's Posing Parade—cbs
Green Hornet, Detective Drama—biu
Arthur Hale in Comment—mbs-east
7:45—Kaltenborn Comment—nbc-west
8:00—Ginny Simms and Soldiers—cbs
"Big Town," Newspaper Drama—cbs
Broadcast of News (15 minutes)—blu
Frank Singler Newsweek—mbs-east
Arthur Hale with repeat—other mbs
8:15—Lum and Abner, Serial Skit—biu
8:30—A Date With Judy, Drama—nbc
Judy Canov, and Variety Show—nbc
Ed Gardner and Duffy's Tavern—biu
Pick & Pat Time, Variety Show—mbs
8:55—Five Minutes News Period—cbs
9:00—The Mystery Theater—nbc-basic
George Burns and Gracie Allen—cbs
Famous Jury Trials, Dramatic—mbs
Gabriel Heatter and Comment—mbs
9:30—Fiber McGee-Molly Show—nbc
Spotlight Bands, Guest Orchest.—biu
Paul Winchell's Jerry, Variety—mbs
9:35—Minute Music, Story—nbc
10:00—Contended Concert Orchest.—nbc
Screen Guild Players & Guest—cbs
Columbia Presents Corwin Show—cbs
Raymond Scott, Variety Comment—mbs
10:15—Chester Bowles on the OPA—biu
To Be Announced (15 mins.)—mbs
10:30—Reporting to the Nation—cbs
Congress Speaks, Washington—cbs
Creeps by Night, Boris Karloff—biu
Halls of Montezuma, Marines—mbs
10:45—Dancing, Musical Orchestra—cbs
11:00—News for 15 minutes—nbc-basic
The Fred Waring repeat—nbc-west
News, Variety Dance 2 h.—cbs & biu
Newswel, Concert, Dance 3 hr.—mbs
11:15—Late Variety with News—nbc

BOOTS AND HER BUDDIES



BIG-HEARTED JEEP

By EDGAR MA

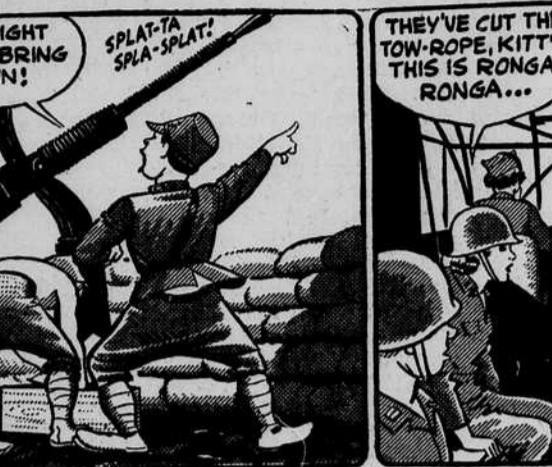


WASH TUBS



NOT SO GOOD

By LESLIE TU



DR. BOBBS

By ELLIOTT and Mc



LITTLE ORPHAN ANNIE

HE'D BRING TH



GASOLINE ALLEY

A LICK AND A P



THE GUMPS

THE MYSTERY T



OUT OUR WAY

By J. R. WILLIAMS



OUR BOARDING HOUSE ... with ... MAJOR



DAILY CROSSWORD

- | | | |
|-------------------------------|---------------------------------|-------------------------|
| ACROSS | DOWN | 16. Cut, as grass |
| 1. Slang | 1. Conveyer | 20. Color |
| 5. Sums up | 2. Sacred bull | 22. Father |
| 9. Savior | 3. Bend the head in greeting | 23. Resembling a star |
| 10. Figure of speech | 4. Cornered, as in a tree | 26. Often (poet.) |
| 12. Arrogance | 5. Coin (Slang.) | 28. Exclamation |
| 13. One who tunes instruments | 6. Commercial travelers (U. S.) | 29. Gloss over |
| 14. Land-measures | 7. Recipient of a gift | 30. Exit |
| 15. Type measure | 8. Weapon scattered | 32. Spread grass to dry |
| 17. Contemptible | 9. Thinly scattered | 34. The shank (anat.) |
| 18. Rhode Island (abbr.) | 11. Sea eagles | 35. Suggests |
| 19. Types of windows | | 36. Apportion |
| 21. Serpentine | | 37. Short-billed auk |
| 24. Tiny | | |
| 25. Muse of lyric poetry | | |
| 27. Flock | | |
| 31. A stern | | |
| 33. Coarse matted wool | | |
| 34. Hire for exclusive use | | |
| 38. Railroad (abbr.) | | |
| 39. Little stream | | |
| 40. Perform | | |
| 41. Undivided | | |
| 42. Not lit | | |
| 44. Tapestry | | |
| 46. Tend, as a furnace | | |
| 47. A game of skill | | |
| 48. Branch | | |
| 49. A mess | | |

SEES IRAN ALAMO KNIVES GURMO KAVES ERNE AL RET NIPLES DOG IT ANIL AWARD SWALE PESO NU GID CLIMB OCA OG EPES FLARID IVORY FINEZ RETIE LAIDE ELSE

Yesterday's Answer
41. Opens (Answ.)
43. Evening
45. Exclamation

CRYPTOQUOTE—A cryptogram quotation

LOR SOMRY PTK EWRPLRFL VITMFO
DRTL JY FMTRWF MFLOR YPSL JY
OPNMTE FMTRK—FRTSRP
Yesterday's Cryptoquote: TRADITION WEARS A SNOWY BEARD. ROMANCE IS ALWAYS YOUNG—WHITTIER.
Distributed by King Features Syndicate, Inc.