

WILMINGTON AND VICINITY: Partly cloudy and continued unseasonably warm today, with widely scattered afternoon or evening thundershowers. Temperatures yesterday: High 91—Low 75.

Superforts Bomb Jap Homeland

New Pacific Island Invaded

Yank Troops Hit Saipan Under Fire

MAKE GOOD PROGRESS

Heavy Fighting Raging As Japanese Strive To Oust Invaders

WASHINGTON, June 15.—(AP)—American invaders of Saipan, strategic Pacific island in the Marianas only 1,500 miles southeast of Tokyo, have secured beachheads and are making "good progress" in the face of artillery and tank fire, Admiral Chester W. Nimitz announced tonight.

"In general fighting is heavy but good progress is being made against well organized defenses," Nimitz said.

The text of his communique, No. 50 of Pacific fleet headquarters: "Assault troops have secured beachheads on Saipan island and are advancing inland against artillery, mortar and machine gun fire.

"Virtually all heavy coastal anti-aircraft batteries on the island were knocked out by naval gun fire and bombing. Our troops have captured Aginan Point, in the town of Charan Kanoa, brisk fighting is continuing.

"The enemy has attempted several counter attacks with tanks. These attacks have been broken up by our troops with the support of ships and aircraft.

"In general, fighting is heavy but good progress is being made against well organized defenses."

Aginan Point is on the southwestern tip of the island. Charan Kanoa is one of the few sizeable communities on the island.

The assault on Saipan, Japanese air and naval base, was launched Wednesday morning after intensive preparatory bombing and bombardment of it and neighboring Japanese defense points.

Disclosure of the landing came only two hours after the War Department announced bombardment of Japan today by B-29 Superfortresses in the first operational action of the newest and most formidable of the army's bombing planes. Little information was given on the attack and targets were not disclosed.

In an earlier communique disclosing the Saipan invasion was being carried out successfully, Nimitz reported "assault troops have effected landings." He added that troops still are swarming onto the island in face of strong opposition from Japanese garrisons there.

Warships have their big guns turned on Saipan, pounding at Japanese pill boxes and other positions.

Aircraft from big carriers also are participating, with fighter planes flying low over the advancing waves of troops to strafe the enemy and bombers are dropping their deadly loads on fortified Japanese positions.

No indication was given by Nimitz of the type of opposition being met in the landing operations. However, he said that a strong defense was being put up by the Japanese forces.

The beginning of the invasion followed five days of battering action by planes and warships to soften up the enemy positions. Aircraft initially carried out the job of pounding the Marianas defenses from the air, hitting not only Saipan, but adjoining Tinian, Rota, and

(Continued on Page Eight; Col. 6)

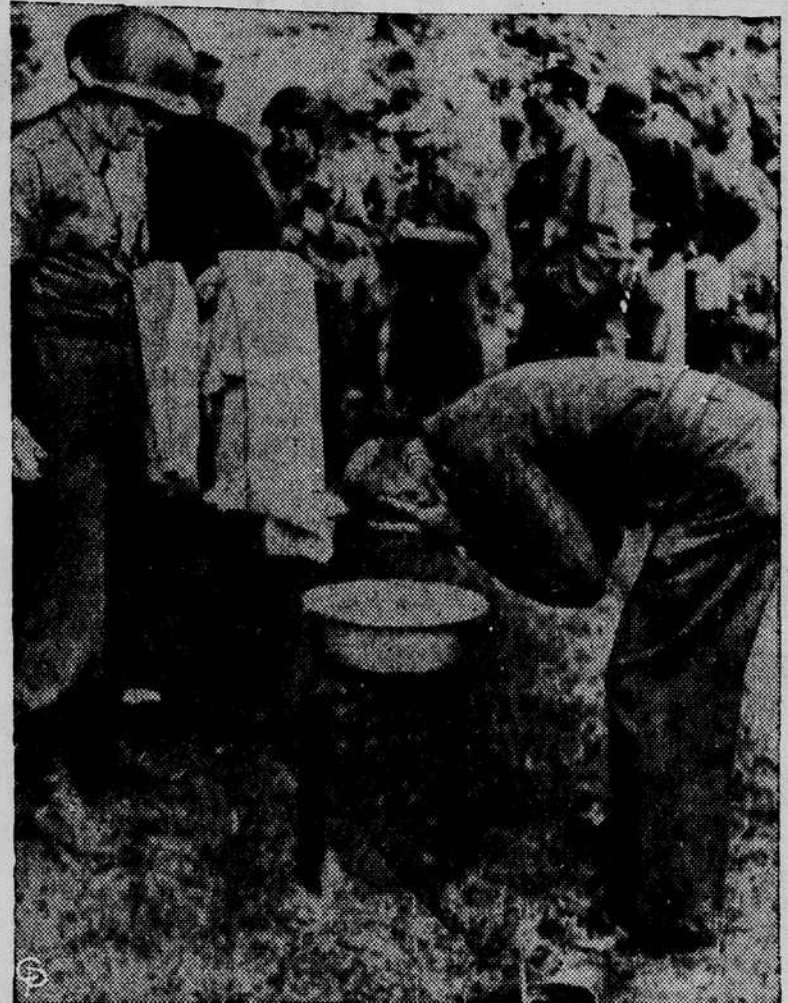
Democrats Pick Kerr As Keynote Speaker

CHICAGO, June 15.—(AP)—Gov. Robert S. Kerr of Oklahoma, an advocate of a fourth term for President Roosevelt, was selected today as the keynoter for the Democratic national convention opening here July 19.

The choice was made by the party's convention arrangements committee but recommendation of a permanent chairman for the convocation was deferred until later.

JAP HOMELAND UNSAFE WASHINGTON, June 15.—(AP)—Secretary of War Stimson said today that the air attack on Japan is the beginning of another phase of our war in the Pacific and that no corner of the Japanese homeland "is now safe from attack."

Beachhead 'Saturday Night'



Gen. Dwight D. Eisenhower, Supreme Allied Commander, washes some dust off his face before lunching in Normandy. He had just visited a beachhead airfield where big transports filled with wounded were taking off in clouds of dust. Signal Corps radiophoto. (Int.)

Big Night Raiders Strike At France

SUPREME HEADQUARTERS ALLIED EXPEDITIONARY FORCE, Friday, June 16.—(AP)—Continuing the around-the-clock aerial punishment of Nazi targets in France, a tremendous force of RAF bombers thundered across the channel during the night in a spectacular sequel to widespread daylight operations in which 5,000 planes, including 1,300 U. S. heavy bombers, took part.

The RAF armada making the latest assault on the Germans' invasion defenses was so large it took an hour and a half to pass across England's southern coast. The roar of engines was as great as Wednesday night when 1,100 RAF planes delivered the heaviest aerial bombardment in history against Le Havre and other points on the French coast.

After the first big RAF night raiders had passed out of view last night flashes and explosions in the direction of Boulogne indicated that another vital Nazi port on the French coast was getting a blasting.

Squadrons of RAF fighters were believed to have escorted the bombers, for they began circling over the southeast coast shortly before the British heavyweights appeared in the sky.

While many of the bombers returned quickly from their mission to the Boulogne area, others were believed to have headed much deeper into Nazi territory.

The raid was made in the face of threatening weather—with wind blowing stronger, considerable cloud and the prospect of rain.

Westbrook Endorsed For State Office

Norwood S. Westbrook, recently reelected commander of Wilmington Post No. 10, American Legion, has been endorsed by the post for the office of state vice commander it was announced last night.

Commander Westbrook will head the local delegation to the state convention to be held in Asheville June 18-20. Other delegates from Wilmington who will attend are: J. R. Hollis, W. L. Farmer, E. L. Bell, N. C. King, N. B. Register, P. T. Boone, W. J. Riley, E. F. Troy, Theodore Webb, W. F. Hayes, W. K. Rhodes, and F. A. Scroggs.

Japanese Troops Encircle Changsha

CHUNGKING, June 15.—(AP)—Japanese troops have crossed the Liuyang river, last line of defense before Changsha, by-passed the city on the east and then slashed westward toward the Siang river to cut off the southward line of retreat for the besieged defenders, the Chinese high command indicated tonight.

Changsha lies on the east bank of the Siang.

House Bill Gives Army 49 Billion

NAVY GETS LARGE SUM

'Hitler Doom' Measure Speedily Approved At Capital

WASHINGTON, June 15.—(AP)—Spurred by news of the Superfortress bombing of Japan, the House unanimously passed a \$49,109,002,795 "Hitler doom" bill for the army today and sent it to the Senate.

At the same time the Senate completed legislative approval of history's biggest Navy appropriation—\$27,569,000,000 in cash and \$5,000,000,000 in contract authorizations—and sped it to the White House. Senator Overton (D-La.) estimated this would keep America's big sea force steaming full speed even though the war lasts longer than is expected.

The largest allotment in the army supply measure, \$12,610,200,000, was earmarked for the air force, whose big B-29 bombers may have been over the Japanese homeland even as the House acted. A roll call vote followed demands that never again should "impractical, idealistic, suicidal parliament" be allowed to gain a foothold in this country.

Rep. Snyder (D-Pa.) told the House that the big bill was the "Hitler Doom" bill.

It carries \$15,436,031,795 in new funds for the fiscal year starting July 1 and \$33,672,071,000 left over from the \$74,211,249,961 appropriated for the current year. It raises to an estimated \$390,000,000 war and defense obligations voted since July 1, 1940.

Terminating the June 6 invasion of Europe the first round in the eight to exterminate the Axis, Snyder, chairman of the appropriations subcommittee said:

"The day of the last round we just cannot predict, but we can fervently hope that it will come before the snow flies again. It is the hope of our military leadership that Germany will be out of the war before another year begins."

Speaking against complacency after the war, Rep. Starnes (D-Ala.) a member of Snyder's committee declared:

"There must be no more Pearl Harbors. We cannot gamble our birthright upon treaties and oceans."

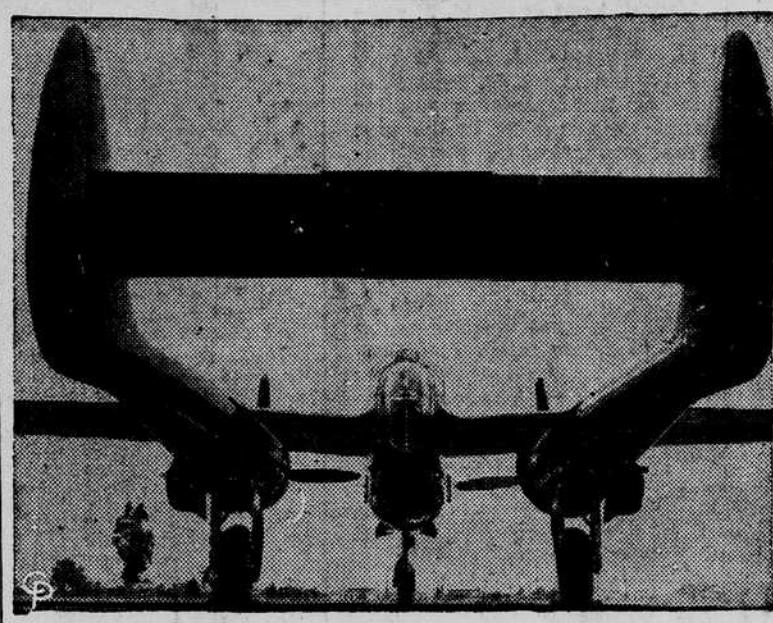
Reds' Northern Drive Sweeps On Viipuri

LONDON, June 15.—(AP)—The Russians' drive for possession of Finland advanced farther up the Karelian Isthmus today with Gen. Leonid A. Govorov's troops capturing 17 more fortified Finnish strongpoints along the bloody road to Viipuri, Moscow announced tonight.

The Finns, taking advantage of every natural obstacle and fighting from strongly-entrenched permanent defense positions, were said to have resisted fiercely but vainly.

Moscow said Govorov's army in six days of battle had now advanced 25 miles through the first and second Finnish defense zones and widened the breach to 47 miles.

First Photo Of 'Black Widow'



This unusual view of the "Black Widow," P-61, one of the first ever published, was taken from the rear at Hawthorne, Cal., where these deadly night fighters are built. Now in action against the enemy overseas, the "Widow" is literally a flying gun platform and is said to be the largest and most powerful pursuit plane ever built. The slim, twin fuselages behind the motors make the plane look like a P-38, but the cockpit fuselage resembles that of a bomber. The craft is equipped with Hamilton four-blade propellers; other details are secret. (International.)

Allied Troops Seize Large Italian Towns

ROME, June 15.—(AP)—Bursting through another line of defenses hastily thrown up by the retreating Germans beyond Rome, Allied forces have captured the large Italian towns of Orvieto, Aquila and Narni in a general advance and were fighting tonight in the outskirts of the important industrial and communications center of Terni, 45 miles north of the capital.

American troops shoving up the Tyrrhenian coast captured Magliano and threatened Bengodi, only 14 miles from Grosseto, after having seized vast quantities of Nazi food supplies at Orbetello. They had entirely cleared lateral Highway 74, running inland from the coast past the northern shore of Lake Bolsena.

Eighth army columns, now carrying the brunt of the inland advance, fought their way into Orvieto, 57 miles northwest of Rome; Narni, 41 miles due north of the capital, and Aquila, 54 miles to the northeast, above Avezzano. Lt. Gen. Sir Oliver Leese's forces were checked temporarily on the outskirts of Terni by blown bridges and a stiff German counterattack.

It was reported that fresh German divisions had reached Italy, but Allied forces driving north and northwestward from Rome still were encountering only rearguard elements of the shattered 14th Army.

The pursuing Allies continued to capture sizable groups of prisoners, one American unit bagging 300 in the past 24 hours. At several points the Germans resorted to the use of cavalry to check Allied vanguards, and the accurate and heavy fire of their mobile artillery played a big part in slowing the advance of the Fifth and Eighth armies in recent days.

Today's Allied communique said the enemy's stiffened resistance "has been at least temporarily overcome," and that "important gains have been made all along the front."

Two-ton blockbuster bombs were rained on railyards at Nis, Yugoslavia, last night by RAF Liberators, Halifaxes and Wellingtons, following a heavy daylight assault on central European oil installations. The Mediterranean air forces flew some 2,000 sorties yesterday, destroying 18 enemy planes and losing a like number. Not a German craft was sighted over the Italian battle area.

TWIN CITY STORE BURNS

WINSTON-SALEM, June 15.—(AP)—The Anchor company, mid-town department store, was damaged by fire in the basement and part of the first floor shortly after noon today, but firemen said they did not believe the damage would exceed the \$18,000 loss to the firm in a fire February 20.

Great Plane Blast Cities

Mammoth New B-29 Flying Fortresses bombard Nipponese Mainland After Long Flight From China-India-Burma Area

WASHINGTON, June 15.—(AP)—America's new fortresses bombed Japan's homeland today and the radio, acknowledging attacks, said industrial areas and Shimonoseki were hit.

In Congress, Rep. Starnes (D-Ala.) told his colleagues he had information there was "great destruction" in Tokyo. There was no confirmation of Starnes' report from the War Department which did not disclose targets.

Moji is a city on Kyushu, southernmost of the main Japanese islands. Shimonoseki is on Honshu island just across a strait from Kyushu. They are about 500 miles, airline, from Tokyo.

An Imperial Japanese communique estimated the number of raiding planes at 20 and made the usual claims that they were intercepted and "repulsed." It said several were shot down and Dornier, Japanese news agency, said six were shot down.

The Japanese said both B-29 Superfortresses and B-24 Liberators were among the American planes.

Here, the only official information available late tonight was that attacks were carried out by B-29's flying from bases in the China-India-Burma theater.

The War department disclosed at 1:39 p. m., eastern war time, that the long-secret flying giants had gone into action. The announcement said:

"B-29 Superfortresses of the United States Army air forces 20th bomber command bombed Japan today."

To this was added some time later that the planes flew to the attack from the China-India-Burma theater.

Then Rep Starnes (D-Ala.) arose in the House to tell his colleagues that the target of the raid was Tokyo proper. A good source informed him, he said, that a large number of American planes were causing "great destruction" in Tokyo.

It was the second American bombing of Japan, but the first announcement of action by the B-29's.

House and Senate sessions were halted for announcement of the news. Senator Pepper (D-Ia.) told his colleagues he was "sure the heart-felt thanks of Congress and the country go out" to those who made the attack possible. Rep. Mahon (D-Tex.) said the news indicated the wisdom of Congress in furnishing funds for the giant bombers.

Rep. Manasco (D-Ala.) said the War department advised him the B-29's "bombed several large cities" on the mainland of Japan but there was no information yet on the results.

Mansco said the assumption (Continued on Page Three; Col. 1)

Roosevelt Announces Postwar Peace Plan

WASHINGTON, June 15.—(AP)—An American plan to keep the post-war world at peace through an international organization—backed by the arms of peaceful nations if necessary—was made public by President Roosevelt today after a year and a half of Allied discussions.

The administration aims, set out in a White House statement: 1. An organization, composed of all "peace-loving" nations, to keep world stability.

2. A world council, elected annually by the participating nations, to settle international disputes. It would include "the four major nations" (presumably the United States, Great Britain, Russia and China) and "a suitable number of other nations."

3. An international court to handle justifiable disputes.

4. The maintenance of sufficient armed strength by the individual nations to put down, by joint action, any future aggressions.

McArthur's Bombs Blast Japs

ADVANCED ALLIED QUARTERS, New Guinea, June 16.—(AP)—American unloaded the heaviest load of the war on the Caroline islands naval quarters announced today.

The planes dropped bombs on the atoll during raids June 12 and 13. The ed building and shot intercepting Zeros in the air and Eten islands.

B-29 Superfortresses Rated Greatest Plane In World

By JAMES J. STREIBIG Associated Press Aviation Editor WASHINGTON, June 15.—(AP)—The Boeing B-29 Superfortress is a global warplane backed by global authority and the "greatest production program in history."

The War Department today released much of the hitherto restricted information about the four-engine war machine which has had more advance notice than any other military airplane.

Disclosed along with details of the plane was the formation of the 20th air force, an organization headed by Gen. H. H. Arnold, commanding general of the army air forces, and operating around the world with authority stemming

directly from the joint chiefs of staff.

The 20th was set up to employ the B-29's particular capacities. It has no other aircraft, and no other air force has any of the B-29's. Thus the Superfortress will be directed from Washington by the joint chiefs of staff.

Also disclosed was the extent of the production program for the B-29, an industrial plan involving billions of dollars and reaching into virtually every manufacturing center in America. Five great airplane factories are turning out the giant bomber on assembly lines; another huge factory building sub-assemblies ranks as a prime contractor, and another plant constructed to

build the engines is the largest single factory unit in the world. Production of other types of aircraft, has been stopped in some plants so that facilities and manpower can be used in making B-29 sub-assemblies.

The number of sub-contractors runs into the hundreds.

The B-29 is described briefly as a bomber that flies fourthly and higher with a greater load than any other plane. Actual performance figures are secret, as with all warplanes, but this much descriptive data has been released:

The plane has a wing spread of 141.2 feet and a fuselage 98 feet long. Its single dorsal fin, resembling the tail of the B-17 Flying Fortress, stands 27 feet high. The fuselage is cylindrical, the round nose reaching well forward of the narrow wing. It is a mid-wing design compared with the B-17's low wing and the high or shoulder wing of the B-24 Liberator.

The power, previously announced, comprises four Wright cyclone engines of 2,200 horsepower each, these being the same as the engines which pulled the Lockheed Constellation across the country in record transport plane time. The B-29 also has a tricycle landing gear with double wheels.

The Superfortress wing is an entirely new one, described by Boeing engineers as the "most efficient wing ever devised." (Continued on Page Three; Col. 2)