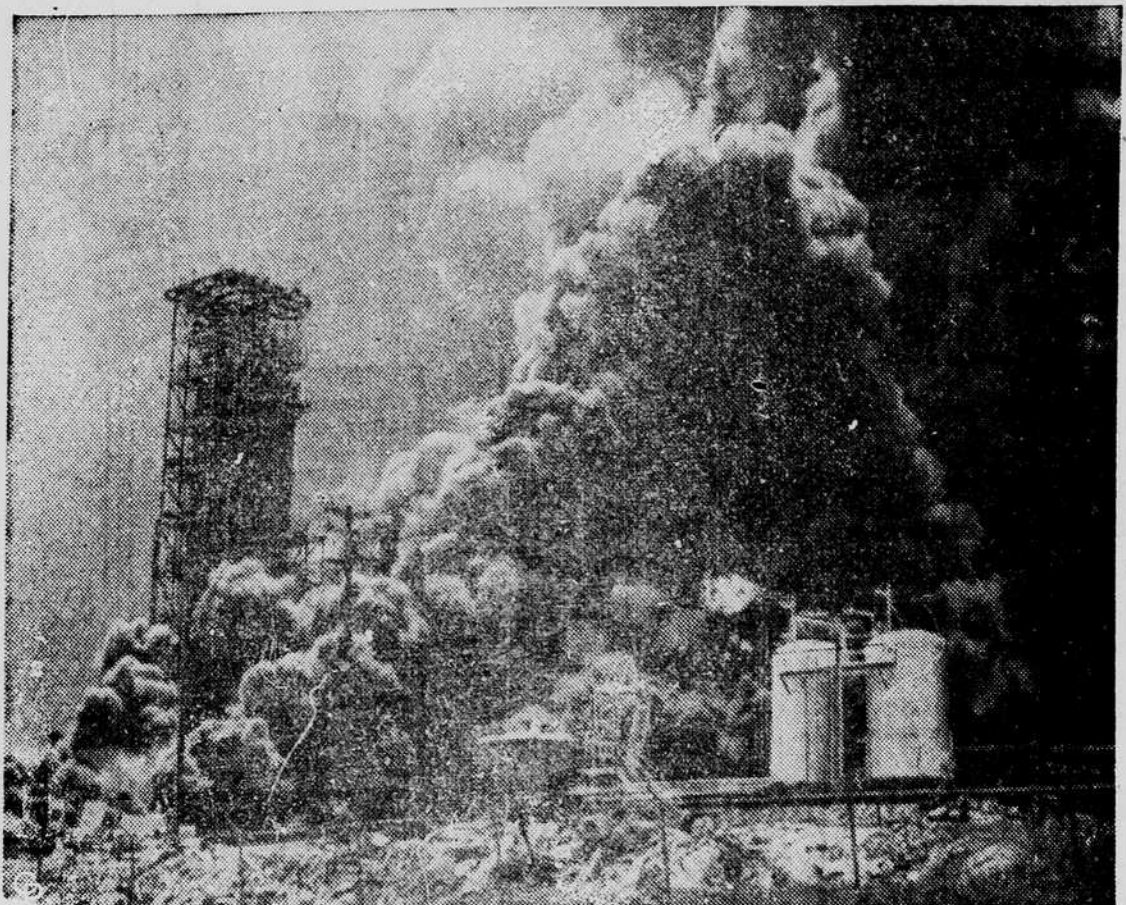


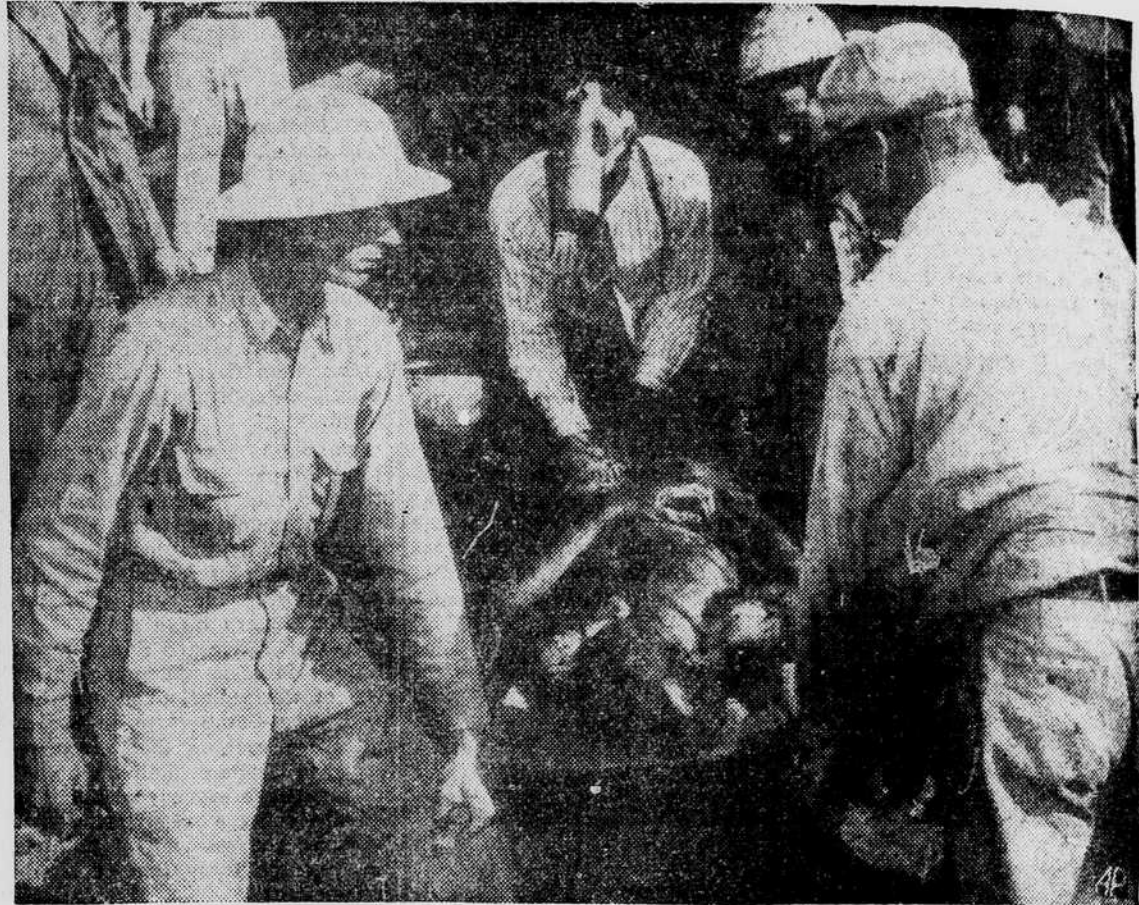
# FILM STORY OF TEXAS CITY BLAST



**OIL REFINERIES** burn in Texas City inferno. Dense black smoke from burning oil refineries form a background for a house wrecked by the series of explosions that razed Texas City, Tex. It was estimated that 1,200 persons were killed and more than 1,000 injured.—(AP Wirephoto).



**SCENE OF TEXAS** blast disaster—This map shows the location of the worst explosion in the history of the Texas Gulf coast. The disaster had its beginning where a French ship, taking on nitrates off Texas City, Tex., blew up. A series of explosions followed and the huge Monsanto Chemical Company plant in Texas City was reported in complete ruins. Fire spread quickly to oil lines and flames raged for hours after the first blasts and no water was available. Texas City is just across Galveston Gulf from Galveston, Tex.—(International).



**RESCUE WORKERS** in gas masks gather up dead. Rescuers wearing gas masks remove a body from wreckage along the waterfront after devastating explosions swept through Texas City, Tex. Poisonous gas from exploding chemicals was reported filtering through the razed city. The chain of blasts killed persons estimated to number 1,200 and injured more than 1,000.—(AP Wirephoto).



**RESCUERS DIG** explosion victims from mud—Rescue workers dig bodies of explosion victims from the mud into which they were blown by the chain of terrifying blasts that devastated Texas City, Tex. The number of dead has been estimated at 1,200. More than 1,000 were injured.—(AP Wirephoto).



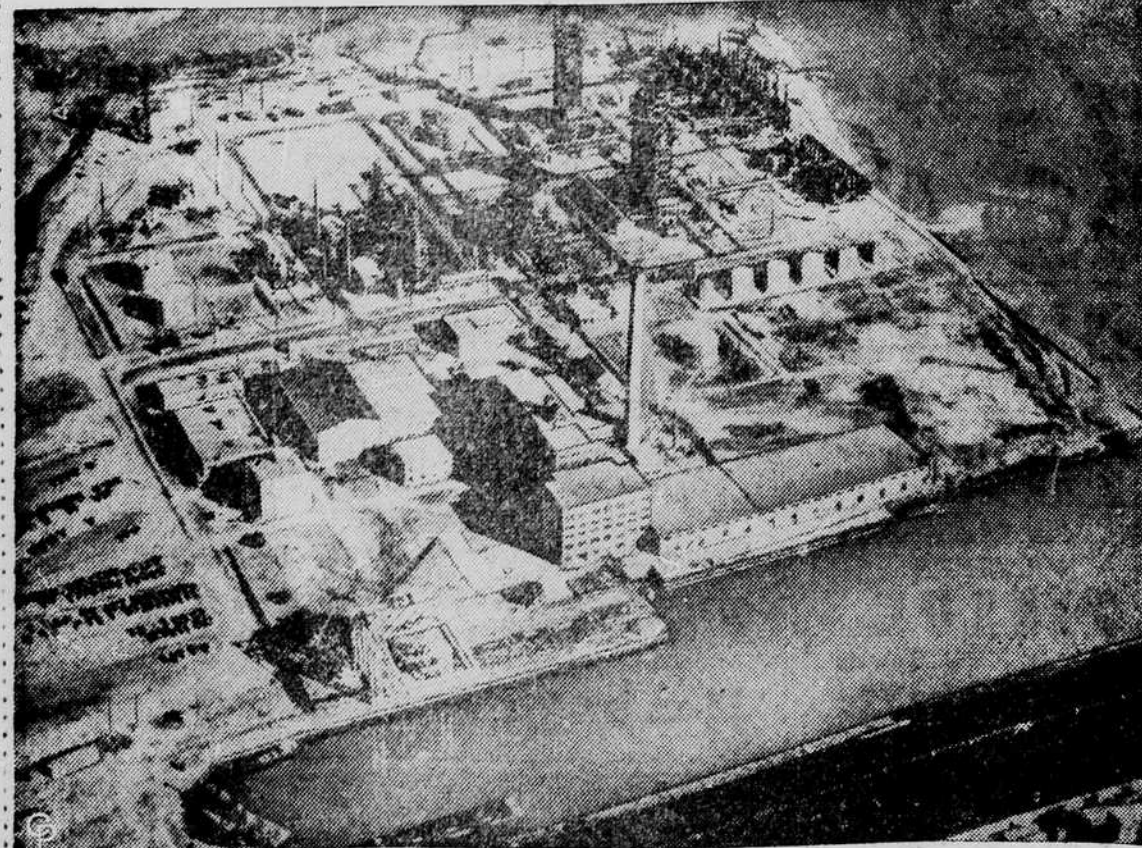
**MASSIVE EXPLOSIONS** spread fire through Texas City—The greater portion of Texas City, Tex., appears to be burning furiously shortly after a chain of terrific explosions spread flames throughout the town of 15,000 population. Estimate place the number of dead at 1,200, with more than 1,000 injured. An explosion aboard a nitrate-laden ship in the harbor set off the series of blasts in industrial plants ashore.—(AP Wirephoto).



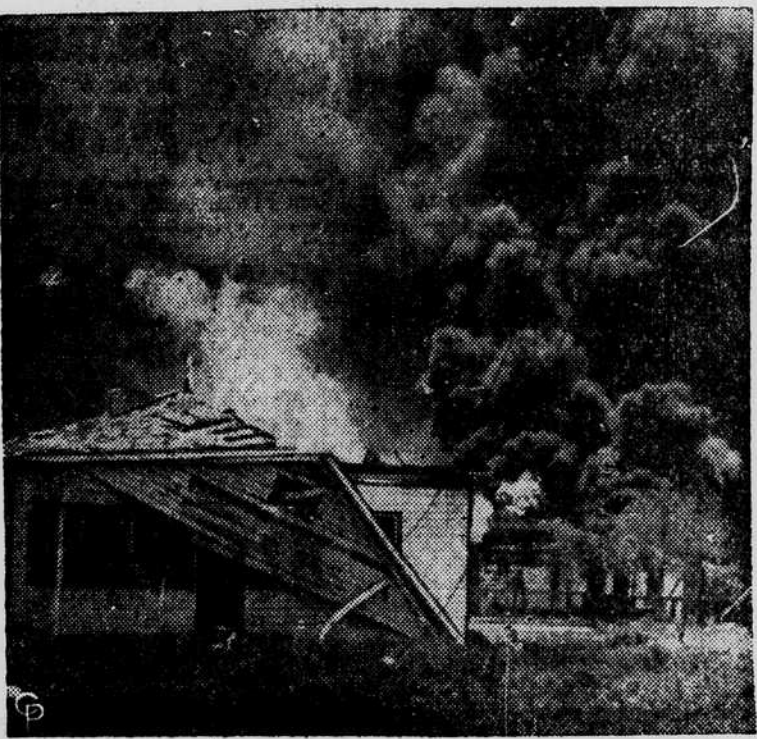
**TEXAS CITY PLANT ENGULFED** IN SMOKE—AN IMPENETRABLE CLOUD of smoke engulfs the plant on the Monsanto Chemical Company in Texas City, Tex., following a series of explosions and a fire which virtually razed this city of 15,000 persons. More than 1000 were believed dead, in the worst explosion disaster in Gulf Coast history. Wire reports indicated that several thousands of town-folk had been attracted to the waterfront by a fire aboard a French ship, which was taking on nitrates. Suddenly the ship blew up, taking an immediate toll of some 500 lives, with thousands injured. A second explosion and fire then rocked the chemical plant, bringing more casualties.—(International Soundphoto).



**TEXAS CITY FIRE AFTER EXPLOSION**—This is a view of Texas City, Tex., burning after an explosion aboard a ship in the harbor April 16—(Associated Press Photo)



**HUGE CHEMICAL PLANT** destroyed by explosion—Here is an aerial view of the \$9,500,000 Monsanto Chemical Company plant reported in complete ruin as the result of explosions and fire in Texas City, Tex., in which at least 650 persons were killed and some 3000 injured. The disaster had its beginning in a chain of explosions aboard the French ship, Grand Camp, which was being loaded with nitrates in Galveston Bay. A series of several blasts followed in quick succession.—(International Soundphoto).



**HOMES RAZED** in Texas disaster—Flames sweep through the residential section of Texas City, Tex., following a series of explosions which caused one of the nation's great disasters. Some 300 houses were completely destroyed and not a single building escaped damage.—(International Soundphoto).



**BUILDINGS DAMAGED** miles from Texas blast scene—Although located miles from the scene of the Texas City, Tex., explosions these two stores were badly damaged by the shock. Windows were shattered and sections of the framework buckled.—(International Soundphoto).