

CHURCHES

Carol Candle Lighting Service At St. Paul's

St. Paul's Lutheran Church announces the presentation of its traditional Christmas Carol Candle lighting service for the Vespers tonight at eight o'clock.

The service of congregational carol singing will be preceded with a program of Christmas organ music, with Warren A. Hohl at the organ console, beginning at 7:45. An adult and young peoples choir will lead the carol singing and render as anthems "Holy Night," "Peaceful Night!" from the "Christ Child," from C. B. Hawley, and "It Came Upon the Midnight Clear" by Oley Speaks.

"Christmas Lights" will be the theme of the message to be delivered by the pastor, the Rev. Walter B. Freed. The service reaches its climax when each worshiper, holding a lighted candle, which has received its flame from the altar candles, sings "Silent Night, Holy Night."

URGES AMERICANS TO HEAR 'STORY'

Radio Religious Director Cites Dramatization

CHICAGO — American families should put the religious radio program "The Greatest Story Ever Told" on their Sunday night listening schedules, Miss Pearl Rosser, director of radio education for the International Council of the Religious Education, said here today.

This program is a dramatization based on the teachings of Christ. It is heard over stations affiliated with the American Broadcasting Company Sunday at 6:30 p. m. Eastern Standard Time (5:30 p. m. central time, 4:30 p. m. Mountain time, 3:30 p. m. Pacific time). It is a \$1,000,000 a year production sponsored without advertising by Goodyear Rubber and Tire Company.

"The program fills a real need in the radio schedule of the American public and deserves the full support of our listeners," Miss Rosser said. "The program will do much to enrich the religious experiences of families. Church members will also be interested to know that some of the programs can now be obtained on records for family listening."

Bethany Presbyterian Plans Yule Parent At Church Today

Special Christmas Services have been announced by Bethany Presbyterian church, Castle Hayne, this afternoon at 5:30 o'clock featuring a Christmas pageant "Home For Christmas," by Mary Drake.

The Rev. Reid Newland, pastor announced plans also for the church's annual gift offering for aged ministers which will be conducted during the pageant services.

Another feature of the program is the candlelighting service which follows the pageant. The public has been invited to attend and participate in these rites.

Wilmington And Nearby Churches Invite You To Worship With Them Today

FIRST—Fifth and Market streets. The Rev. Charles A. Maddy, minister. Sunday school, 9:45 a. m. Worship, 11 a. m. and 8 p. m. Training Union, 6:45 p. m.

TEMPLE—17th and Market streets. Sunday school, 9:45 a. m. Morning worship, 11 a. m. Training Union, 6:45 p. m. Evening worship, 8 p. m. The Rev. W. J. Stephenson, pastor.

CALVARY—Fourth and Brunswick streets. The Rev. E. W. Pate, pastor. Sunday school, 9:45 a. m. Morning worship, 11 a. m. Evening worship, 7:30 p. m.

SOUTHSIDE—720 South Fifth street. The Rev. Guy W. Moore, pastor. Sunday school, 9:45 a. m. Worship, 11 a. m. and 8 p. m. Training Union, 6:45 p. m.

LAKE FOREST COMMUNITY—Worship, Sunday school, 9:45 a. m. preaching, 11 a. m.; Training Union, 6:30 p. m.; preaching, 7:45 p. m.

TABERNACLE—Sixth and Ann streets. The Rev. A. H. Glazier, minister. Bible school, 9:45 a. m. Worship, 11 a. m. and 8 p. m. BTU, 6:45 p. m. Wednesday prayer, 7:30 p. m.

EAST WILMINGTON—Live Oak ave. Fred L. Kelly, pastor. Sunday school, 10 a. m. Worship, 11 a. m. and 8 p. m. Training Union, 7 p. m.

FIVE WIL—Fourth and Queen streets. The Rev. A. M. Wheeler, pastor. Sunday school, 9:45 a. m. Worship, 11 a. m. and 7:30 p. m.

SEAGATE—Evening services, 7:30 p. m. B. T. U., 6:15 p. m. prayer meeting, 7:30 p. m.

WRIGHTSBORO—The Rev. H. S. Strickland, pastor. Bible school, 9:45 a. m. Worship, 11 a. m. and 8 p. m. BTU, 6:45 p. m.

GIBSON AVENUE—C. E. Brisson, pastor. Sunday school, 10 a. m. morning worship, 11 a. m. B. T. U., 6:15 p. m. evening worship, 7:30 p. m. prayer meeting, Wednesday, 7:30 p. m. church practice, Thursday, 7:30 p. m.

SUNSET PARK—The Rev. G. Carl Lewis, pastor. Sunday school, 9:45 a. m. Worship, 11 a. m. and 8 p. m. Training Union, 6:45 p. m.

WINTER PARK—The Rev. T. H. King, pastor. Sunday school, 10 a. m. BTU, 6:15 p. m. Worship, 11 a. m. and 7:30 p. m.

CAROLINA BEACH—Lake Park

ery minister. Sunday school 9:45 a. m. Worship, 11 a. m. and 7:30 p. m.

MAFFITT VILLAGE—The Rev. Paul C. Nix, pastor. Sunday school, 9:45 a. m. Worship, 11 a. m. and 7:30 p. m. BTU, 6:15 p. m.

BARLOW'S CHAPEL—The Rev. W. E. Pope, pastor. Church services, first and third Sundays at 11:30 a. m. and on the fourth Sunday school, each Sunday at 10:30 a. m. and 8:30 p. m. and BTU at 6:30 p. m.

SALEM AT SNEEDS FERRY—W. E. Pope, pastor. Church services, first and third Sundays at 11:30 a. m. and on first Sundays at 7:15 p. m. Sunday school, each Sunday at 10:30 a. m. BTU each Sunday at 6:30 p. m.

VISTA—Hampstead—W. E. Pope, pastor. Church services, first and third Sundays at 11:30 a. m. and on first Sundays at 7:15 p. m. Sunday school, 10:30 a. m. each Sunday.

MASONBORO—The Rev. J. H. Blackmore, pastor. Sunday school, 10:30 a. m. Morning worship, 11:30 a. m. and 8 p. m. Evening worship, 7:30 p. m.

PROVIDENCE BAPTIST—Holly Ridge, pastor. Paul L. Merritts, pastor. Sunday school, 10 a. m. and morning worship at 11 a. m. BTU at 7 p. m. and 8 p. m. Midweek service, Wednesday at 8 p. m. Baptist Training Union.

CATHOLIC

ST. MARY'S—Fifth and Ann streets. Very Rev. Msgr. Cornelius E. Murphy, pastor. The Rev. Michael F. O'Keefe, assistant pastor. Sunday masses, 7 a. m., 9 a. m. and 11 a. m. daily Masses, 7 a. m. and 8 p. m. Confessions, Saturday from 4 to 6 p. m. and 7 to 9 p. m.

IMMACULATE CONCEPTION—Carrolla Beach. St. Joseph's street. The Rev. Thomas Roche, pastor. Mass on Sunday at 8 a. m. Confessions before mass.

THERESE'S 209 S. Lumina ave. Whiteville Beach. The Rev. Thomas Roche, pastor. Mass on Sundays at 10 a. m. Confessions before mass. Morning prayer and sermon at 11 a. m.

ST. JAMES—Third and Market streets. The Rev. Mortimer Glover, pastor. Fourth Sunday in Advent. Holy Communion, 8 a. m. Church school, 9:45 a. m. Holy Commu-

on, 8 a. m. Church School, 9:45 a. m. litany anti-communion and sermon, 11 a. m.

ST. ANDREW'S—Wrightsville Sound, 11:00 a. m. morning prayer and address, Rev. Richard L. Sturgis.

ST. PHILLIP'S—Tar Landing 7 p. m. Evening prayer and address, David Foster and Raymond Wildham.

ALL SAINTS—Carolina Beach, 11:00 a. m. morning prayer and sermon, Rev. Thos. E. Noe.

ST. PHILIP'S—Southport 11 a. m. p. m. Evening prayer and sermon, Spencer Fountain.

ALL SOULS—North West, 7:45 p. m. evening prayer and sermon, Rev. Thomas P. Noe.

ST. LUKE'S MISSION—125 Spofords, Asley T. St. Amand, lay-minister-in-charge. Church services, 4:30 p. m. Vesper services and address, 7:30 p. m.

ST. PHILIP'S—Southport, 11 a. m. morning prayer and sermon, Rev. Richard L. Sturgis.

ST. JOHN'S—Third and Red Cross streets, Rev. E. W. Halleck, pastor. Holy Communion at 7:30 a. m. Church school at 9:45 a. m. Morning prayer, 11 a. m. Evening prayer, 7 p. m. Y. P. S. L. at 7 p. m.

ST. PAUL'S—18th and Market streets. The Rev. Alexander Miller, pastor. Holy communion, 7:30 p. m.

ST. ANNE'S—Jacksonville, 11:00 a. m. morning prayer and address, W. M. Atkinson.

METHODIST

GRACE—Grace and Fourth streets. The Rev. J. A. Russell, pastor. Church school, 9:45 a. m. Worship, 11 a. m. Youth Fellowship and supper, 6 p. m. Worship, 8 p. m.

FIFTH AVENUE—Between Nun and Church streets. The Rev. B. C. Reider, pastor. Sunday school, 9:45 a. m. Worship, 11 a. m. Youth Fellowship, 6:30 p. m. Evening service, 8 p. m.

TRINITY—Market at 14th street. The Rev. E. B. Fisher, pastor. Church school, 9:45 a. m. Worship, 11 a. m. Methodist Young Fellowship, 6 p. m. Youth Fellowship, 6:30 p. m. Evening service, 8 p. m.

WESLEY MEMORIAL—Winter

Park. The Rev. Paul H. Fields, minister. Church school, 7 a. m., A. D. Byrd, Supl. Morning worship, 11 a. m. Youth Fellowship, 6:45 p. m. Intermediate Fellowship, 6:30 p. m. Worship, 7:30 p. m.

BETHANY—Worship second and fourth Sundays, 2:30 p. m. The Rev. Kermit R. Wheeler, minister.

ST. PAUL'S—Carolina Beach. The Rev. J. Edwin Carter, pastor. Church school, 10 a. m. Worship, 11 a. m. every Sunday. Youth Fellowship, 6:30 p. m. Worship, 7:30 p. m.

FEDERAL POINT—The Rev. J. Edwin Carter, pastor. Church school, 11 a. m. Worship, 12 o'clock each first, third and fifth Sunday.

EPWORTH—Fifth and Bladen streets. The Rev. C. N. Phillips, pastor. Sunday school, 10:30 a. m. Service, 11:15 a. m. and 8 p. m. Young People's Society, 7:15 p. m. Church school, 9:45 a. m. Vesper services and address, 7:30 p. m.

WESLEYAN METHODIST—The Rev. Charles H. Mercer, pastor. Church school, 9:45 a. m. Worship, 11 a. m. and 7:30 p. m. Youth Fellowship, 6:45 p. m.

WRIGHTSVILLE BEACH—The Rev. Allen Edens, pastor. Sunday school, each Sunday at 10 a. m. Church services, first and third Sundays of each month at 11 a. m.

WESLEYAN METHODIST—18th and Castle streets. The Rev. John H. Long, pastor. Sunday school, 9:45 a. m. Preaching, 11:00 a. m. and 7:30 p. m. YMWV, 6:30 p. m.

PRESBYTERIAN

FIRST—Third and Orange. The Rev. William Crowe Jr., D. D., pastor. Church school, 10 a. m. Worship, 11:15 a. m. Young People's Society, 7:30 p. m.

OAK GROVE CHAPEL—Carrolla Beach road. Sunday school, 10 a. m. J. D. Neal, supl. Song service, 5:45 p. m. followed by regular service at 8 p. m. every first and third Sundays, conducted by Rev. John D. McLeod. Prayer meeting, Wednesday evening 8 p. m.

ST. ANDREWS-CONVENTANT—15th and Market streets. The Rev. Eugene D. Witherspoon, Th. D., minister. Church school, 9:45 a. m. Worship, 11 a. m. Pioneers Senior Young Peoples, 7 p. m. COMMUNITY CHAPEL—Sunday school, 10:45 a. m. Worship every second and fourth Sundays at 8

p. m. Dr. Eugene D. Witherspoon, er Trinity; Holy Communion 8 a. m.; church school, 9:45 a. m.; Letany, ante communion and ser-pastor

DELGADO—The Rev. C. C. Myers, pastor. Worship, 7:30 p. m., first, second and third Sundays; fourth Sunday, 5 p. m. Sunday school, 7:45 a. m.

TOPSAIL—The Rev. C. C. Myers, pastor. Sunday school, 10:30 a. m. Worship, 11 a. m., first and third Sundays; fourth Sunday, 7:30 p. m.

WINTER PARK—The Rev. Al-tred K. Dudley, pastor. Worship, 11 a. m., and 7:30 p. m. Sunday school, 9:45 a. m.

BETHANY—Castle Hayne Road. Sunday school, 10 a. m. Worship, 7:30 p. m. Rev. Reid Newland, pastor. Youth Fellowship meeting, 6:30 p. m. Prayer meeting, Wednesday evening, 7:30 p. m.

MCCLURE MEMORIAL—Castle Hayne. Sunday school, 10 a. m. worship, 11 a. m., Rev. Reid Newland, pastor.

WOODBURN—The Rev. J. D. Withrow, pastor. Sunday school, 10 a. m. Worship, 11 a. m. and 7:30 p. m.

IMMANUEL—Fifth and Meares streets. Rev. W. H. Allison, minister. 9:15 a. m. Sunday school; 11 a. m. morning worship; 6:45 p. m. Youth Fellowship, 7:30 p. m. evening worship.

MYRTLE GROVE—The Rev. John D. MacLeod, pastor. Sunday school, 9:45 a. m. Worship, 11 a. m. Young People, 6:15 p. m. Wednesday prayer, 7 p. m.

PEARSALL MEMORIAL—East Wilmington. The Rev. Frederick W. Lewis, D. D., pastor. Sunday Pioneers, 6 p. m. Youth Fellowship, 6:45 a. m. Worship, 11 a. m.

ship, 6:45 p. m.

HOLLY RIDGE—The Rev. P. T. Batson, pastor. Worship, 2 p. m. Worship, 8 p. m.

HOLINESS

FIRST PENTECOSTAL—516 North Fourth street. The Rev. S. A. Fann, pastor. Sunday school, 8:30 a. m. to 9 a. m. Sunday school, 9:45 a. m. Worship, 11 a. m. Young Peoples service, 6:30 p. m. Evangelistic service, 7:30 p. m.

EIGHTH STREET MISSION—813 South Eighth street. The Rev. J. F. Colley, pastor. Services Sunday, 9 p. m. Tuesday, 8 p. m.

CHRISTIAN

FIRST—Third and Ann streets. The Rev. Philip Byron Carlisle, pastor. Bible school, 9:45 a. m. Worship, 11 a. m. Evening service, 7:30 p. m. C. Y. F. Sunday, 6:45 p. m.

CHURCH OF CHRIST

1009 South Fourth street. Bible school, 10 a. m. Worship, 11 a. m. and 7 p. m. Young People's meeting, 6 p. m.

TEMPLE OF ISRAEL

Fourth and Market streets. Services Fridays 8 p. m. and Saturday morning 11 o'clock. Rabbi Pizer W. Jacobs.

CONG. B'NAI ISRAEL—313 Walnut street, Rabbi Samuel A. Friedman. Friday evening service at 8:00 p. m. Saturday morning service at 8:30 a. m. Sunday school at 10:00 a. m. Religious school Monday through Thursday 3:00 to 5:00 p. m. Young Judea meets Sunday afternoon.

CHRISTIAN SCIENCE

FIRST CHURCH OF CHRIST—Scientist, 17th and Chestnut streets. Services Sunday, 11 a. m. Sunday school 10 a. m.

MORMON

CHURCH OF JESUS CHRIST OF LATTER DAY SAINTS—1413 Castle street. Sunday school 10 a. m. Sacrament meeting, 7 p. m.

THE CITADEL—215 South Front street. Major and Mrs. Lisle Shuckford officers in charge. Sunday school, 9:45 a. m. Holiness meeting, 11 a. m. Young Peoples services, 6:15 p. m. Open air service, 7:15 p. m. Evangelistic service, 8 p. m.

NON-DENOMINATIONAL

CASTLE HEIGHTS—15th and Castle streets. Mrs. W. T. DeVane,

Jr., leader. Worship, 8 p. m.

KURE MEMORIAL CHAPEL—Kure Beach. Sunday school, 10 a. m. Linwood Flowers, superintendent.

CHURCH OF GOD

Corner Fourth and Market streets. The Rev. R. H. McCann, pastor. Radio service, 10 a. m. WMPF, Sunday school, 10 a. m. Preaching, 6:45 p. m. and 7:30 p. m.

THE CHURCH OF GOD—217 2nd street. Bible school, 10 a. m. worship, 11 a. m. and 7:45 p. m. W. M. B. Thursday, 7:45 p. m. V. L. B. Friday, 7:45 p. m. Rev. V. J. Sykes, pastor.

CHRISTIAN AN MISSIONARY ALLIANCE

TABERNACLE—Corner Sixth and Orange streets. The Rev. W. H. Hurni, pastor. Bible school, 10 a. m. Worship, 11 a. m. Evening service, 8 p. m. Evangelistic service, 8 p. m.

GREEK ORTHODOX

ST. NICHOLAS—Second and Orange streets. The Rev. E. P. Pappas, pastor. Sunday school, 11:30 a. m. Service and sermon, 11:30 a. m.

SEVENTH DAY ADVENTIST

Ninth and Market streets. Sabbath school, 9:45 a. m. Sabbath school, 11 a. m. Young Peoples meeting, 7 p. m. meeting, Wednesday, 7:45 p. m.

COMMUNITY CHURCH

Fourth and Cape Fear. The Rev. James B. McQuere, pastor. 11 a. m. Sunday school, 10 a. m. p. m. Worship, 7 p. m.

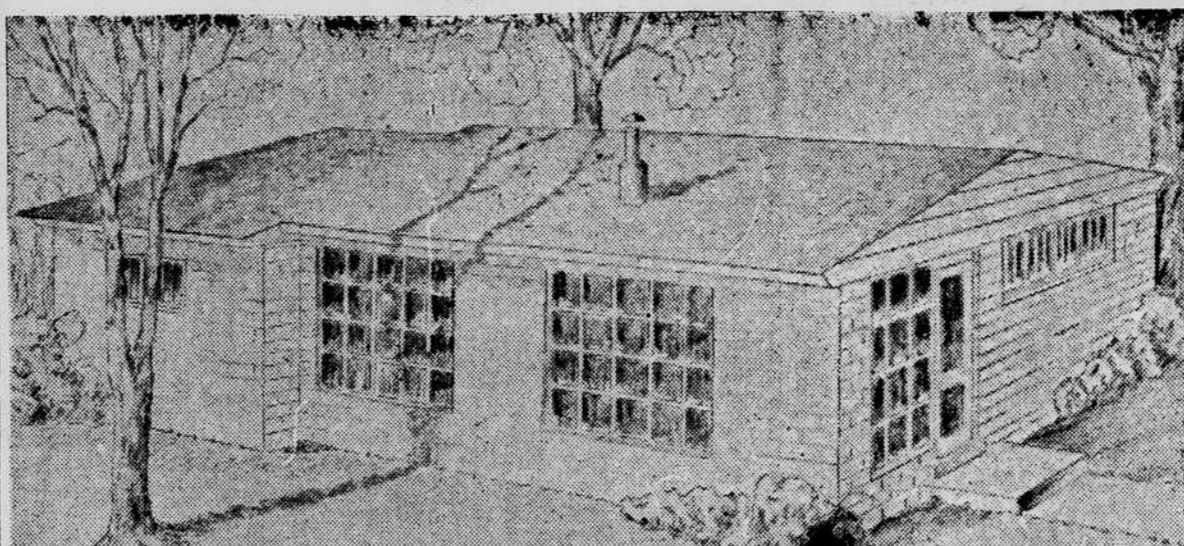
PRESBYTERIAN

CHESTNUT STREET—The Rev. B. H. Baskerville, pastor. Worship, 11 a. m. Sunday school, 10:30 p. b.

FOR YOUR CONVENIENCE

All articles, church schedules, changes or additions and other correspondence pertaining to all churches and in the office of the Wilmington Star-News at 12:30 later than Thursday at 12:30 p. m.

Modern Campers' Cabin—Camp Don Lee



The picture above shows the sketch of the campers' cabin as prepared by architect, Louis A. Oliver of Norfolk. It is actually a "double cabin" with two sleeping compartments for campers, and a separate compartment in the same building for two counselors.

DURHAM, Dec. 20.—The eight hundred Methodist churches of the North Carolina conference are making a Christmas offering for the building fund of Camp Don-Lee, Conference youth camp, according to Rev. J. G. Phillips, executive secretary of the conference Board of Education. The plans for the Christmas offering were developed by the Conference camp committee and the Bishop's cabinet. These plans, if carried through successfully, will result in the beginning of a camping program at Don-Lee next summer.

Burgaw Churches Conduct Special Services Today

BURGAU, Dec. 20.—Today is the day that the citizens of Burgaw will actually celebrate Christmas. Each church will have its special Christmas program.

SOUTHSIDE CHOIR PLANS PROGRAM

Emerson Head, Trumpeter Featured In Services

The Chorus choir of Southside Baptist church, comprising 22 voices, will present a program of Christmas music Sunday evening at 8 o'clock, at the church. The program is as follows: "Sing, O Heavens," "While Shepherd Watched their Flocks," "Gloria to God in the Highest," "It Came Upon the Midnight Clear," "God Rest you Merry, Gentlemen," "O Holy Child," "Star of the Orient."

Tabernacle Baptists Musical Program Here Tonight At 8 o'clock

A program of special Christmas music will be presented tonight at the 8 o'clock church services at Tabernacle Baptist church, it has been announced. Special features of the song service will be by Mrs. J. L. Finch, Miss Julia Hayes Mrs. Clyde Leonard, Miss Jeanette Rhodes Mrs. W. D. Mills, and O. G. Rhodes.

Oak Grove Church Schedules Yuletide Services Today

Christmas services will be held at Oak Grove Chapel, Carolina Beach road, today at 5:30 p. m. A play entitled "The Story Beautiful" will be given by the adults and young people, after which Santa Claus will arrive to present all the children present with gifts from the Christmas tree.

Rev. Nix To Preach At Village Church During Christmas

The Rev. Paul C. Nix, former pastor of the Maffitt Village Baptist church will fill the pulpit at regular services at the local church during the Christmas holidays, and for special services tonight at 8 o'clock.

PARK METHODIST YULE SERVICES

Church Schedules Full Week Of Observance

Singing of Christmas carols will feature the morning services today at the Sunset Park Methodist church, with the Rev. Charles Mercer, pastor delivering a special Christmas sermon. This afternoon at 7:30 the choir will present a cantata "The Choir of Bethlehem"

ONSLOW CHURCH IS DEDICATED

Rev. E. C. Chamblee Delivers Special Sermon

Three Baptist churches which comprise the Barlow's chapel field in the vicinity of Holly Ridge dedicated their pastor's home Tuesday night of this week with Rev. E. C. Chamblee of Wilmington delivering the dedicatory address.

Episcopal Churches Conduct Services For Children Today

There will be a Christmas program at St. John's church school at 9:45 Sunday morning. The children will sing Christmas carols and will receive candy and oranges.

Episcopal Churches Conduct Services For Children Today

All of the officers, teachers, and children are requested to bring presents for the children of St. Philip's church Tar Landing. The offering, also, will be given to that mission.

Dr. Nash Sails For Great Britain, Speaking Session

CHAPEL HILL, Dec. 20.—Dr. Arnold Nash, head of the University's new Department of Religion, has sailed for England where he will speak before an international conference of students and faculty members sponsored in London January 4-10 by the Student Christian Movement of Great Britain. His subject will be "University Education."

BAPTIST CHURCH TO BE ORGANIZED

Beach Road Baptist Church To Hold Opening Service

A new Baptist church will be formally organized this afternoon at 3 in the Myrtle Grove or Monkey Junction community between Wilmington and Carolina Beach. The group will meet for organization in the Myrtle Grove Community club building formerly used as the community school. The regular worship services will continue to be held in this building until such time as the church group can construct its own house of worship.

Evil Dictatorship In Power At Time Of Book's Birth

By WILLIAM E. GILROY, D.D. The Book of Revelation was written at a time and under circumstances in which, if there was ever occasion of doubting eternal rules, it was then. An evil dictatorship was in power, only the political expediency of his subjects, but religious worship of him as well. And if he did not have the power to command, he did have the power to inflict cruel suffering and death upon those who refused to bow to a law-abiding, otherwise good and law-abiding, of bowing to the sacrilegious tentate.

WILMINGTON AND NEARBY CHURCHES INVITE YOU TO WORSHIP WITH THEM TODAY

It is a Book full of mystery, with imagery and symbols to which those for whom it was written had the key. But if portions of it now seem difficult, its message as a whole is clear and plain. In noble and beautiful passages, such as those that constitute this lesson, it sets forth the truth concerning God's eternal rule, and the triumph of the faithful in a world of light and life and glory.

WILMINGTON AND NEARBY CHURCHES INVITE YOU TO WORSHIP WITH THEM TODAY

With imagery and symbols to which those for whom it was written had the key. But if portions of it now seem difficult, its message as a whole is clear and plain. In noble and beautiful passages, such as those that constitute this lesson, it sets forth the truth concerning God's eternal rule, and the triumph of the faithful in a world of light and life and glory.

WILMINGTON AND NEARBY CHURCHES INVITE YOU TO WORSHIP WITH THEM TODAY

With imagery and symbols to which those for whom it was written had the key. But if portions of it now seem difficult, its message as a whole is clear and plain. In noble and beautiful passages, such as those that constitute this lesson, it sets forth the truth concerning God's eternal rule, and the triumph of the faithful in a world of light and life and glory.

WILMINGTON AND NEARBY CHURCHES INVITE YOU TO WORSHIP WITH THEM TODAY

With imagery and symbols to which those for whom it was written had the key. But if portions of it now seem difficult, its message as a whole is clear and plain. In noble and beautiful passages, such as those that constitute this lesson, it sets forth the truth concerning God's eternal rule, and the triumph of the faithful in a world of light and life and glory.

WILMINGTON AND NEARBY CHURCHES INVITE YOU TO WORSHIP WITH THEM TODAY

With imagery and symbols to which those for whom it was written had the key. But if portions of it now seem difficult, its message as a whole is clear and plain. In noble and beautiful passages, such as those that constitute this lesson, it sets forth the truth concerning God's eternal rule, and the triumph of the faithful in a world of light and life and glory.

WILMINGTON AND NEARBY CHURCHES INVITE YOU TO WORSHIP WITH THEM TODAY

With imagery and symbols to which those for whom it was written had the key. But if portions of it now seem difficult, its message as a whole is clear and plain. In noble and beautiful passages, such as those that constitute this lesson, it sets forth the truth concerning God's eternal rule, and the triumph of the faithful in a world of light and life and glory.

WILMINGTON AND NEARBY CHURCHES INVITE YOU TO WORSHIP WITH THEM TODAY

With imagery and symbols to which those for whom it was written had the key. But if portions of it now seem difficult, its message as a whole is clear and plain. In noble and beautiful passages, such as those that constitute this lesson, it sets forth the truth concerning God's eternal rule, and the triumph of the faithful in a world of light and life and glory.

WILMINGTON AND NEARBY CHURCHES INVITE YOU TO WORSHIP WITH THEM TODAY

With imagery and symbols to which those for whom it was written had the key. But if portions of it now seem difficult, its message as a whole is clear and plain. In noble and beautiful passages, such as those that constitute this lesson, it sets forth the truth concerning God's eternal rule, and the triumph of the faithful in a world of light and life and glory.

WILMINGTON AND NEARBY CHURCHES INVITE YOU TO WORSHIP WITH THEM TODAY

With imagery and symbols to which those for whom it was written had the key. But if portions of it now seem difficult, its message as a whole is clear and plain. In noble and beautiful passages, such as those that constitute this lesson, it sets forth the truth concerning God's eternal rule, and the triumph of the faithful in a world of light and life and glory.

WILMINGTON AND NEARBY CHURCHES INVITE YOU TO WORSHIP WITH THEM TODAY

With imagery and symbols to which those for whom it was written had the key. But if portions of it now seem difficult, its message as a whole is clear and plain. In noble and beautiful passages, such as those that constitute this lesson, it sets forth the truth concerning God's eternal rule, and the triumph of the faithful in a world of light and life and glory.

WILMINGTON AND NEARBY CHURCHES INVITE YOU TO WORSHIP WITH THEM TODAY

With imagery and symbols to which those for whom it was written had the key. But if portions of it now seem difficult, its message as a whole is clear and plain. In noble and beautiful passages, such as those that constitute this lesson, it sets forth the truth concerning God's eternal rule, and the triumph of the faithful in a world of light and life and glory.

WILMINGTON AND NEARBY CHURCHES INVITE YOU TO WORSHIP WITH THEM TODAY

With imagery and symbols to which those for whom it was written had the key. But if portions of it now seem difficult, its message as a whole is clear and plain. In noble and beautiful passages, such as those that constitute this lesson, it sets forth the truth concerning God's eternal rule, and the triumph of the faithful in a world of light and life and glory.

WILMINGTON AND NEARBY CHURCHES INVITE YOU TO WORSHIP WITH THEM TODAY

With imagery and symbols to which those for whom it was written had the key. But if portions of it now seem difficult, its message as a whole is clear and plain. In noble and beautiful passages, such as those that constitute this lesson, it sets forth the truth concerning God's eternal rule, and the triumph of the faithful in a world of light and life and glory.