

# King Kolax Drops Ork To Join Billy Eckstine

## Popular Singing Maestro Featured With New Ork

### CAROL BRICE TO BE AT FLA. COLLEGE

NEW YORK (Special Times)—The greatest of young American entertainers, will open the Florida Agricultural and Mechanical College's summer season with a special after-season concert. Miss Brice is appearing in the summer season under the favor of her husband, Neil Scott, who is a former high school student of Dr. William H. Gray, now president of the Florida Agricultural College.

Miss Brice's touring season ended on April 26 at New Haven, Conn., and she has turned down several lucrative offers to appear in concert since May 1. She will do several network broadcasts during the summer months but no formal concert other than the FAMC engagement.

Miss Brice appeared thirty times from November 1 to April 26 during the season just closed. It had been her intention to devote the past season entirely to study and the care of her young son, Neil Scott, Jr., but public demand forced her to abandon these plans.

The young singer is refusing concert engagements during the taxing months because of the coming season which begins at the Beach. Her second week of August when she sings the Brahms' Alto Rhapsody with Dr. Serge Koussevitzky and ends on April 26, 1947 when she gives her first formal concert at New York's Carnegie Hall. Miss Brice is almost completely booked for the season 46-47 with the exception of a few dates in no-nude winter and early spring tour.

### ROY WINKINS IN RADIO WARNING

NEW YORK (Special Times)—Assistant Secretary of the NAACP will be the featured guest in New York Station WED, Tuesday, May 21st, from 9:45 to 10:00 P. M. The program, called "University of the Air," will be devoted to a discussion of the use of fascism and the result of attack against all minorities in America. The recent pogrom in Columbia, Tennessee, will be used as an example of the inhuman Fascist-Klan program to suppress

### MARIAN ANDERSON SPONSORS TENOR FUND

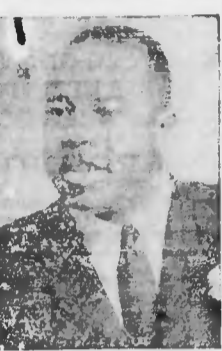
NEW YORK (Special Times)—The most accomplished of modern American tenors, climbed another rung on the rung of world reputation last week when he gave the active patronage of the tenor fund sponsored by Mrs. Anderson at the Metropolitan Opera House. Marian Anderson, the world's greatest of vocalists, will be the featured soloist in a concert at the Metropolitan Opera House, which will be broadcast on radio from her home in Bayview, Conn.

Miss Anderson was presented with her husband, O. H. Anderson, with many other notables of the world of art and music. The audience, who were present at the Metropolitan Opera House, the Metropolitan Opera Association, Frank La Forge, the great teacher and composer, and the wife, Mr. and Mrs. George S. Brown, of the Metropolitan Opera House, Mrs. Alda, famed soprano of the Metropolitan Opera, Mrs. James McDon, wife of James McDon, famed radio and Metropolitan Opera tenor, the composer of the American opera, Grandpa's Face, the Metropolitan Opera's piano partner of Curcio Coraggio during the period of "The golden age of song," and Mr. P. G. Glavin, vice-president of the Chase National Bank and his wife.

Mr. McFarlin was a student of polo like our late President Roosevelt, sang his program seated in a chair which was raised on a platform, raised above audience level and from the very outset he had his audience captivated with the beauty of his fresh young robust voice and his magnificent artistry.

There was both dramatic utterance and a fine subtlety of vocal nuance in the tenor's work touched with a spark of vocal genius in his interpretations of the various songs and arias that unmistakably mark a great artist. This was the consensus of opinion of many in the audience who expressed the desire to hear Mr. McFarlin again in the very near future. At the special request of Mrs. Anderson, Mr. McFarlin, who is married to his wife, Mrs. Hazel McFarlin, sang "Swing Low, Sweet Chariot" among other encores. In addition to the usual tenor's repertoire of arias and art songs the young tenor sang "Supplication" and "Window Pane," two compositions of his teacher, the distinguished Frank La Forge.

### KING KOLAX



KING KOLAX

### Dynamaestro Lucky Millinder Born Band Leader

WILMINGTON (Special Times)—Since the day he was a tot in the yankee port, Lucky Millinder, the orchestra leader, wanted to be a band leader. Traveling throughout America and Europe with his parents, who were theatrical performers, he was exposed to the life of a band leader.

Lucky Millinder's father, a pianist, was actually directed the orchestra with his father's assistance. After a hard childhood, he decided to make a career out of orchestra conducting and for the past decade has been one of the nation's leading band leaders. Lucky Millinder's father, a pianist, was actually directed the orchestra with his father's assistance.

### AMERICAN NAACP BRIVE

WASHINGTON, D. C. — Week-end members of Duke Ellington, national American NAACP, member of the Washington Branch, NAACP, membership campaign for 15,000 members. Duke Ellington, national American NAACP, member of the Washington Branch, NAACP, membership campaign for 15,000 members.

### DOVE MUSIC COMPANY

ARTHUR DOVE, Prop. Automatic Phonographs. Select records our specialty. Dial 3-2744. 129 E. CABARRUS ST.

Advertisement for 'Clary Brown' featuring Charles Boyer and Jennifer Jones. Includes text: 'So Irresistible! So Innocent? In Each Other's Arms... and Hearts... at Last! ERNST LUBITSCH'S Production of Clary Brown with PETER LAWFORD - HELEN WALKER - REGINALD GARDNER. Produced and Directed by ERNST LUBITSCH'

## GI-BAND MAKES DEBUT IN N. Y.; PLANS TOURS

### NATIONAL MUSIC WEEK OBSERVED AT SHAW

RALPHIGH — Three events at Shaw University presented in the Chapel within the week highlighted the celebration of National Music Week, May 5 to 12. The observance was opened Monday morning at 10 o'clock with a service department presented Miss Margaret Williams, mezzo soprano, in a program of classical numbers.

The second program, titled "Moussique Moderne," featured the Shaw University Women's Glee Club. Other choral units in a concert, popular and semi-classical selections, and was presented Friday morning at 11:45 o'clock. The concert was heard by students, faculty members and delegates in attendance at the annual convention of Business Officers of Negro Colleges, then in session at Shaw.

The Faculty Concert, Friday night at 8 o'clock, featuring Harry L. Galsworthy in piano recital with the full string on the music week calendar. The observance was under the University choir, and by Miss Althea Rayvonne. Featured soloists in "Musique Moderne" were Miss Helen Satterwhite and Henry Blackmon. The baritone solo by Mr. Blackmon was given a few hours before he left by plane for California where he is to be presented in concert in several cities.

## GI-BAND MAKES DEBUT IN N. Y.; PLANS TOURS

### NATIONAL MUSIC WEEK OBSERVED AT SHAW

RALPHIGH — Three events at Shaw University presented in the Chapel within the week highlighted the celebration of National Music Week, May 5 to 12. The observance was opened Monday morning at 10 o'clock with a service department presented Miss Margaret Williams, mezzo soprano, in a program of classical numbers.

The second program, titled "Moussique Moderne," featured the Shaw University Women's Glee Club. Other choral units in a concert, popular and semi-classical selections, and was presented Friday morning at 11:45 o'clock. The concert was heard by students, faculty members and delegates in attendance at the annual convention of Business Officers of Negro Colleges, then in session at Shaw.

The Faculty Concert, Friday night at 8 o'clock, featuring Harry L. Galsworthy in piano recital with the full string on the music week calendar. The observance was under the University choir, and by Miss Althea Rayvonne. Featured soloists in "Musique Moderne" were Miss Helen Satterwhite and Henry Blackmon. The baritone solo by Mr. Blackmon was given a few hours before he left by plane for California where he is to be presented in concert in several cities.

## GI-BAND MAKES DEBUT IN N. Y.; PLANS TOURS

### NATIONAL MUSIC WEEK OBSERVED AT SHAW

RALPHIGH — Three events at Shaw University presented in the Chapel within the week highlighted the celebration of National Music Week, May 5 to 12. The observance was opened Monday morning at 10 o'clock with a service department presented Miss Margaret Williams, mezzo soprano, in a program of classical numbers.

The second program, titled "Moussique Moderne," featured the Shaw University Women's Glee Club. Other choral units in a concert, popular and semi-classical selections, and was presented Friday morning at 11:45 o'clock. The concert was heard by students, faculty members and delegates in attendance at the annual convention of Business Officers of Negro Colleges, then in session at Shaw.

The Faculty Concert, Friday night at 8 o'clock, featuring Harry L. Galsworthy in piano recital with the full string on the music week calendar. The observance was under the University choir, and by Miss Althea Rayvonne. Featured soloists in "Musique Moderne" were Miss Helen Satterwhite and Henry Blackmon. The baritone solo by Mr. Blackmon was given a few hours before he left by plane for California where he is to be presented in concert in several cities.

## GI-BAND MAKES DEBUT IN N. Y.; PLANS TOURS

### NATIONAL MUSIC WEEK OBSERVED AT SHAW

RALPHIGH — Three events at Shaw University presented in the Chapel within the week highlighted the celebration of National Music Week, May 5 to 12. The observance was opened Monday morning at 10 o'clock with a service department presented Miss Margaret Williams, mezzo soprano, in a program of classical numbers.

The second program, titled "Moussique Moderne," featured the Shaw University Women's Glee Club. Other choral units in a concert, popular and semi-classical selections, and was presented Friday morning at 11:45 o'clock. The concert was heard by students, faculty members and delegates in attendance at the annual convention of Business Officers of Negro Colleges, then in session at Shaw.

The Faculty Concert, Friday night at 8 o'clock, featuring Harry L. Galsworthy in piano recital with the full string on the music week calendar. The observance was under the University choir, and by Miss Althea Rayvonne. Featured soloists in "Musique Moderne" were Miss Helen Satterwhite and Henry Blackmon. The baritone solo by Mr. Blackmon was given a few hours before he left by plane for California where he is to be presented in concert in several cities.

## GI-BAND MAKES DEBUT IN N. Y.; PLANS TOURS

### NATIONAL MUSIC WEEK OBSERVED AT SHAW

RALPHIGH — Three events at Shaw University presented in the Chapel within the week highlighted the celebration of National Music Week, May 5 to 12. The observance was opened Monday morning at 10 o'clock with a service department presented Miss Margaret Williams, mezzo soprano, in a program of classical numbers.

The second program, titled "Moussique Moderne," featured the Shaw University Women's Glee Club. Other choral units in a concert, popular and semi-classical selections, and was presented Friday morning at 11:45 o'clock. The concert was heard by students, faculty members and delegates in attendance at the annual convention of Business Officers of Negro Colleges, then in session at Shaw.

The Faculty Concert, Friday night at 8 o'clock, featuring Harry L. Galsworthy in piano recital with the full string on the music week calendar. The observance was under the University choir, and by Miss Althea Rayvonne. Featured soloists in "Musique Moderne" were Miss Helen Satterwhite and Henry Blackmon. The baritone solo by Mr. Blackmon was given a few hours before he left by plane for California where he is to be presented in concert in several cities.

## GI-BAND MAKES DEBUT IN N. Y.; PLANS TOURS

### NATIONAL MUSIC WEEK OBSERVED AT SHAW

RALPHIGH — Three events at Shaw University presented in the Chapel within the week highlighted the celebration of National Music Week, May 5 to 12. The observance was opened Monday morning at 10 o'clock with a service department presented Miss Margaret Williams, mezzo soprano, in a program of classical numbers.

The second program, titled "Moussique Moderne," featured the Shaw University Women's Glee Club. Other choral units in a concert, popular and semi-classical selections, and was presented Friday morning at 11:45 o'clock. The concert was heard by students, faculty members and delegates in attendance at the annual convention of Business Officers of Negro Colleges, then in session at Shaw.

The Faculty Concert, Friday night at 8 o'clock, featuring Harry L. Galsworthy in piano recital with the full string on the music week calendar. The observance was under the University choir, and by Miss Althea Rayvonne. Featured soloists in "Musique Moderne" were Miss Helen Satterwhite and Henry Blackmon. The baritone solo by Mr. Blackmon was given a few hours before he left by plane for California where he is to be presented in concert in several cities.

Advertisement for Coca-Cola with text: 'It's what they want' and 'Coca-Cola 5¢'. Includes image of a woman and a Coca-Cola bottle.

Advertisement for 'Royal' featuring 'Friday and Saturday Jack Randall - In "WILD HORSE CANYON"', 'Sunday and Monday Roy Rogers - In "BELLS OF ROSARITA"', and 'Thursday Bargain Day - Double Feature'.

Advertisement for 'DINE OUT THIS WEEK END!' with 'SPECIAL 45¢' and 'SUNDAY SPECIAL 60¢'. Includes text: 'Enjoy the Pleasant Atmosphere of a Fine Restaurant Paradise Grill 204 W. SOUTH STREET'.

Advertisement for 'LINCOLN' with 'SUN. MON. TUES. MAY 26-27-28' and 'Frontier Girl' featuring 'YVONNE "SALOME" DeCARLO, ROD CAMERON - With: ANDY DEVINE, FUZZY KNIGHT, SHELDON LEONARD'.

Advertisement for 'Frontier Girl' with 'WEDNESDAY THURSDAY MAY 29, 30' and 'THE PICTURE OF DORIAN GRAY' featuring 'GEORGE SANDERS HURD HATFIELD, DONNA REED'.

Advertisement for 'Frontier Girl' with 'FRIDAY-SATURDAY MAY 31, JUNE 1' and 'TUSCON RAIDERS' and 'BURIED ALIVE'.

Advertisement for 'Frontier Girl' with 'WEDNESDAY THURSDAY MAY 29, 30' and 'THE PICTURE OF DORIAN GRAY'.

Large advertisement for 'Wiley G. Barnes' with 'VOTE FOR THE RE-ELECTION OF WILEY G. BARNES TO THE STATE SENATE IN THE PRIMARY SATURDAY' and 'Your Support Will Be Greatly Appreciated W. G. BARNES'.

Advertisement for 'VOTE FOR JIMMY L. DEESE' with 'B & H CAFE 411 S. BLOUNT ST.' and 'HOME-COOKED FOODS'.

Advertisement for 'VOTE FOR JIMMY L. DEESE' with 'B & H CAFE 411 S. BLOUNT ST.' and 'HOME-COOKED FOODS'.

Advertisement for 'ROBERT G. YANCEY' with 'House of Representatives - FROM - Wake County (Veteran of World Wars I and II) The Democratic Primary. The Only Businessman Candidate Running In'.

Advertisement for 'Now Playing; A Love Story That Sings To Your Heart!' featuring 'KATHRYN GRAYSON-JUNE ALLYSON LAURITZ MEI. CHOR-JIMMY DURANTE in "Two Sisters from Boston"'. Includes text: 'SUN. MON. TUES. A Riotous Three-Star Race to the Altar! OLIVIA DeHAVILLAND-RAY MILLAND SONNY TUFTS in "The Well Groomed Bride" WED. THURS. FRI. SAT. A Story of Violent Love!'.

Advertisement for 'GARY COOPER INGRID BERGMAN EDNA FERBER'S SARATOGA TRUNK' with 'CHILDREN UNDER 12 9c' and 'ADMISSION 21¢ Plus Tax'.