

## Ligon's 12th Grade Gives Dramatic Play

The 12th grade homeroom, under the supervision of Mrs. R. E. Williams, presented a one-act play at the J. W. Ligon Jr. and Sr. High School recently during assembly. It was a serious play depicting a man, Wilfred Kerry, played by Robert Hinton, whose wife left him 20 years ago because she favored a singing career. He has kept his wife closed since the departure of his wife because of the bitter memory.

problem. The young girl's story of her past and her attitude toward marriage and a career reveals her to be the daughter of Kerry borne by his wife after leaving him. Shaken by this discovery, Kerry gives advice that enables the couple to visualize a happiness together in spite of the girl's desire to be a singer. After the young couple have gone, Kerry feels it is no longer necessary to keep the gate closed. Characters in the play were: Robert Hinton as Wilfred Kerry; Johnnie White as Julia Kerry; Garland Hunt as David Pratt; Percy High as the delivery boy and An-



**PATIENT AT WALTER REED HOSPITAL.** — Pvt. Samuel Hunt is a patient at the Walter Reed Army Hospital, Washington, D. C. He is the son of Mrs. Mae R. Hunt, formerly of Bladen Street, Raleigh, and now living in Brooklyn, N. Y.

## Eagle Scout Rank Conferred On 2 Scouts At Fayetteville

FAYETTEVILLE—At its annual ceremony held at the First Baptist Church, Tuesday, September 23, the Boy Scouts of America, Division Court of Honor, conferred the Eagle Scout Rank on Kenneth Scott, and William White.

The main speaker of the evening was Dr. Rudolph Jones, president of Fayetteville State Teachers College. He explained to the audience the duties of a scout and congratulated the Eagle Scouts on achieving the highest honor that can be bestowed on a scout. The highlight of the meeting was a report given by Rudolph Jones, Jr., first class scout and son of President and Mrs. Jones, on his recent trip on the Philmont Expedition. Master Jones gave a graphic description of the trip and recalled the many interesting scenes and activities of the members of the expedition. Presentations were made to the new first and second class scouts. Life Scout and several received merit badges.

The invocation was by The Reverend Dr. R. Coleman, scripture reading The Reverend C. R. Edwards, pastor of the First Baptist Church, welcome by John W. Queen, who also acted as Master of Ceremonies, a short history of

the scout program in Fayetteville Copping. An award was given to and the qualifications of eagle the scout group of the First Baptist scouts were explained by J. E. List Church.



It Pays To  
**ADVERTISE**

Straight  
**BOURBON**  
Whiskey

**\$2.25**  
PINT  
**\$3.50** 4/5 QUART

TYSONE DISTILLING COMPANY  
LAWRENCEBURG, KENTUCKY

## NEW LINCOLN CAFE

FIRST IN FINE FOODS  
MEALS - SANDWICHES - BEER - SOFT DRINKS  
333 South Wilmington Street Raleigh, N. C.

### FRESH PORK PICNICS LB. 39c

Pure Pork	39c	Pure Lard	59c
Sausage	ib. 39c	ib. Stew Beef	29c
Fresh Pork	ib. 29c		
Liver	ib. 29c		

### FRESH SPARE RIBS LB. 33c

Fresh Pork Brains	ib. 29c	Fresh Ground Beef	49c
T. Bone, Sirlain or	79c	Sunshine Milk	10c
Round Steak	ib. 79c		

### SLICED PORK STEAK LB. 59c

No. 1 White Potatoes	10-lb. 29c	Gold Seal Flour	10-lb. 85c
Vanilla	1 1/2-lb. Pkg. 29c	Black Pepper	1-oz. Can 19c
Waters	1 1/2-lb. Pkg. 29c		

Open Friday Night Until 9 P. M.  
**HORTON'S CASH STORE**  
1415-17 South Saunders St. Raleigh, N. C.

**POSNER'S BERGAMOT CONDITIONER**

Ask for the Jar with the Star!

Recommended by Beauticians everywhere

## Earl Brown Ignoring Liberals

NEW YORK — (AP) — New York City Councilman Earl Brown, defeated decisively in the Democratic primaries by Rep. Adam C. Powell, Jr., told reporters last week that he will not support Liberal party candidates although he is a Liberal candidate for Congressman from the 16th U. S. Congressional District.

Brown is on the ballot for election in November only by virtue of the Liberal party candidacy.

At the press conference at the Hotel Astor, campaign headquarters for the Liberal party, Brown admitted he had told Carmine De Sapio, Tammany leader, of his intention to support Democratic party's candidates.

"I am a Democrat," he commented, "and I will work as hard as I can for the entire Democratic ticket."

One reporter asked if party loyalty could be interpreted to mean that Brown would support Powell. Brown replied that "vanity" would probably cause him to vote for himself in the November elections.

## State College Answers

**QUESTION:** Does the form of nitrogen used in tobacco fertilizer have any effect on yields or quality?

**ANSWER:** Only if the land has been fumigated. Two N. C. Agricultural Experiment Station scientists have found that by applying at least one-third of the nitrogen for tobacco on fumigated land in the nitrate form, yields can be increased by 10 to 20 per cent. Where all the nitrogen was applied in nitrate form, the increased yields were as high as 25 to 30 per cent. In contrast, the scientists found that where all ammonium nitrogen was used, the tobacco yields were not only lower, but the quality poorer.

**QUESTION:** Are fires the biggest threat to North Carolina forests?

**ANSWER:** No. Insects and diseases account for timber losses three times greater than the loss caused by fires. To help reduce this loss, the N. C. Agriculture Extension Service now has a forester taking special training in forest insect and disease control at Syracuse University. Upon the completion of his training, he will return to the state and provide badly needed technical training in the field.

**QUESTION:** Will egg vending machines pay for themselves?

**ANSWER:** In general, only the machines located on the farms will pay. And according to a study at Cornell University, the on-farm machines had to average selling 99 dozens per week to break even.

nie Morgan as Mrs. Allen. C. C. Lipscomb, English and dramatic teacher, directed the play.

H. E. Brown, principal of Ligon High, applauded the imagination of the writers and performers of the play in his remarks afterwards.

Instrumental selections on the piano were given by Annie Morgan and Johnnie White.

The program committee was composed of Carlana Hunt, Doris Massey, Wilbert Hinton, Johnnie White, Annie Morgan, Edward Thorne and Nanita Penn.

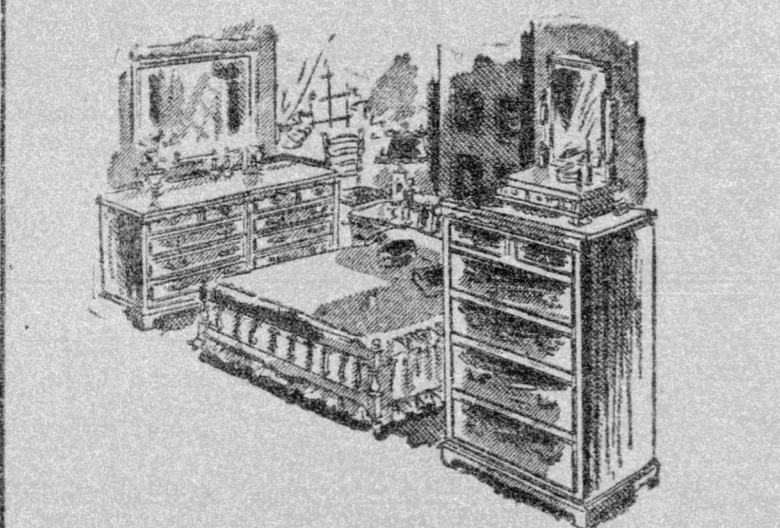
Ushers were: Barney Osborne, Cleo Hedgepeth, Mattie Hamer, and Annie Williams.

**REPAIRS TO RECORD PLAYERS TAYLOR RADIO & TV SERVICE**

"The House Service Bull"

CALL TE. 2-3930  
224 E. MARTIN ST. RALEIGH

## YOUR CREDIT IS GOOD AT QUINN'S



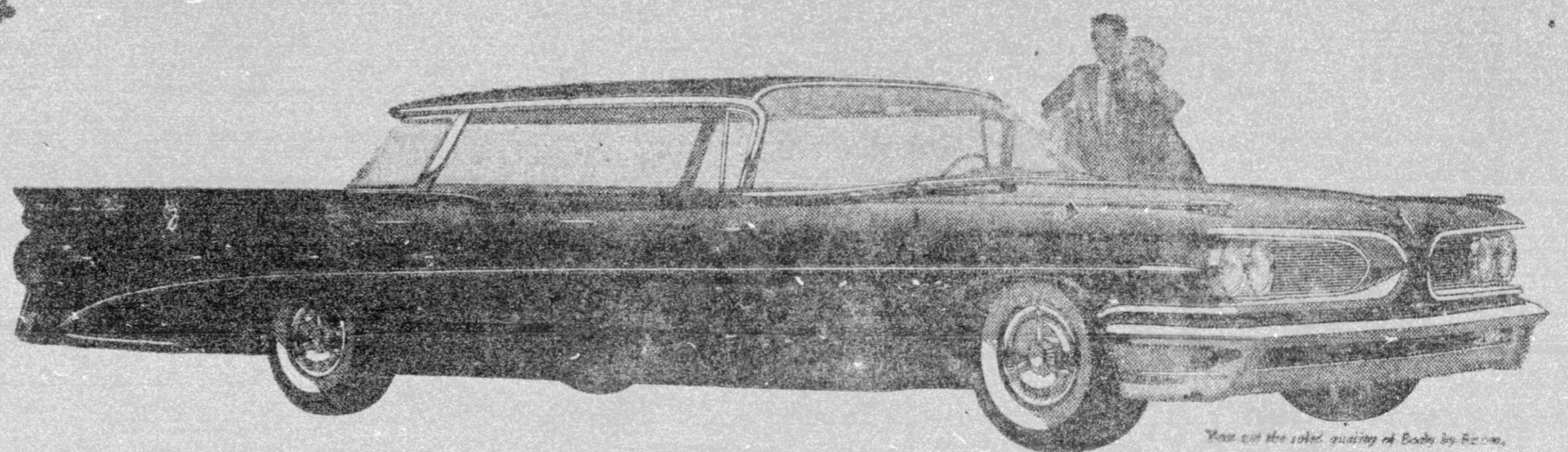
Freshen Up Your Home For Spring From Distinctive Furniture  
**R. E. Quinn Furniture Co.**  
108 E. Martin St. Your Capital City Tel. TE 2-4471

## shop TIP TOP

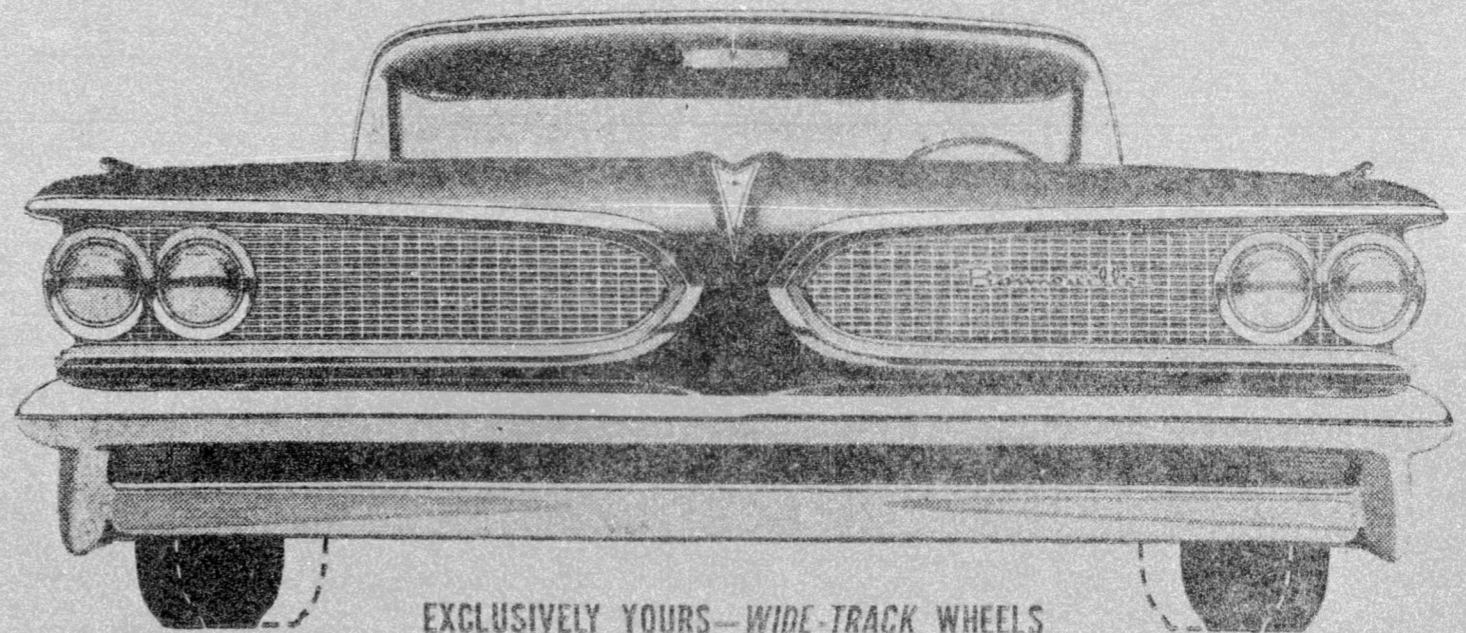
**BIGGELY WIGGELY** STORE LOCATIONS  
2014 Fairview Rd.  
1704 New Bern Ave.  
Forest Hills In Garner  
Henderson — Franklinton

**FREE!** Prizes  
**PORTABLE T-V's**  
Electric Shavers - Waltham Watches  
Wm. Rogers Silver - 30 Food Certificates  
Everyone Invited To Register AT ANY RALEIGH & GARNER STORE  
You Need Not Be Present To Win.

SOUP 'N CRACKER  
CAMPBELL'S TOMATO  
**SOUP 2 CANS 19c**  
DIXIE BELLE CRACKERS LB.  
**BIGGELY WIGGELY**  
PRICES EFFECTIVE THRU SAT. OCT. 11. QUANTITY RIGHTS RESERVED.



Who in the world built this beauty...  
the only car with wide-track wheels?



EXCLUSIVELY YOURS—WIDE-TRACK WHEELS

Wheels moved out 5 inches for the widest, steadiest stance in America—better cooling for engine and brakes—lower center of gravity for better grip on the road, safer cornering, smoother ride, easier handling. You get the most beautiful roadability you've ever known—in America's Number 1 Road Car!

**PONTIAC!** America's Number 1 Road Car!

Those exclusive Wide-Track Wheels sparked a chain reaction of wonderful new ideas. You can see the trim, tailored new look... it's inches lower without sacrificing roominess or road clearance. The first time you drive it, you'll discover this beauty handles city corners and clings to country curves in a way the conventional narrow-gauge cars can't hope to imitate. And the ride... the miraculous freedom from sway, dive and bounce... this is an experience in buoyant travel that you won't believe—until you try it.

But there's still more to the new Pontiac to stamp it as the big change for '59:

Vista-lounges interiors with full 360-degree visibility... seats actually wider than a sofa... Air-Cooled True-Contour Brakes for smooth, effortless control, stop after stop after stop.

The industry's most advanced V-8, Pontiac's Tempest 420, gives you spectacular new responsiveness. And there's a new companion power plant, the Tempest 420E, that delivers phenomenal extra mileage—and does it on regular octane gas!

Come see why no other car can possibly be so new as the new Pontiac—three series: magnificent Bonneville, dramatic Star Chief and brilliant new Catalina.

See Ginger Rogers on the Pontiac Star Parade, Wednesday, Oct. 15th, CBS-TV

SEE YOUR LOCAL AUTHORIZED PONTIAC DEALER



2 Great New Engines

If you love action—you get the liveliest on wheels with the new Tempest 420 V-8, as claimed by automotive experts as America's most advanced power plant.

If you want the accent on economy, choose Pontiac's new Tempest 420E. This new V-8 actually delivers better mileage than many smaller cars with so-called "economy" engines... and it uses regular octane fuel.

**CONN-GOWER PONTIAC COMPANY**

3623 Hillsboro Street

Raleigh, N. C.

Dealer License No. 2417

ON DISPLAY TODAY!