



**EXHIBIT AT "CENTURY OF PROGRESS"** — Assistant Secretary of Labor George L. P. Weaver, top left; and White House Associate Press Secretary Andrew T. Hatcher, bottom, second from left, were among the top Government officials who visited the U. S. Department of Agriculture's exhibit on the opening day of the Century of Negro Progress Exposition in Chicago at McCormick Place last week. Chicago 4-H'er Amos Brown, center for the USDA exhibit program, is showing Mr. Weaver through the exhibit; Tommy McKenzie and Eddie Marie Reynaud are giving Mr. Hatcher a guided

tour. At top right, Jennifer Teer, another Chicago 4-H'er, is presenting a demonstration on how to make a dress. Bottom right: Mrs. Elizabeth A. Lewis, information clerk in the Chicago office of Agricultural Marketing Service, is being presented a certificate of merit by USDA Personnel Officer John E. Tromer. Looking on at left is Dr. L. J. Biever, youth advisor of the Illinois Agricultural Extension Service, who is directing the 4-H activities at the exhibit. Duane Nelson, right, information specialist of the Federal Extension Service, is in charge of the USDA display. (USDA PHOTO).

## GARDEN TIME

We commonly refer to ground covers as being substitutes for grass in those areas of the landscape where grass is difficult to

grow. Since we have grasses adapted to full sun, light shade and heavy shade, I like to think of ground covers as not necessarily substitutes for grass but rather as having merit in their own right.

Most of the plants used for ground covers are low growing with spreading habit. Some spread by underground or surface runners while others spread by the rooting of stems that come in contact with the soil. When good plants are used and properly fed and watered, the spreading types should be well established in about one year.

The weed problem can be largely solved by either fumigating the soil before planting or heavy mulching of the entire area around the plants after setting. Peat moss, ground corn cobs and pine needles are ex-

amples of some of the mulching materials which should prove satisfactory. After the cover is well established, the weed problem is considerably lessened.

There are so many plants that are used for ground covers that it would not be wise to try to name them all. Many of the low, dense growing flowering plants may be used but I will confine this to some of the more common evergreen types. First the ivies (*Hedera helix*).

The English ivy is an old favorite and has the largest leaf of any of the others I will name. All of the following have leaves smaller than the English and of various shapes. - Curly Locks, Shamrock, Marion Beauty, Margaret, Maple Queen, Miniature Hahn's Star, Miniature Green Ripple and Gold Dust which has a variegated leaf, similar in color to Gold Dust Aucuba. All of these do best in shady locations. Pachysandra is another good shade loving cover but has a tendency to turn yellow in full sun.

PATRONIZE OUR ADVERTISERS!

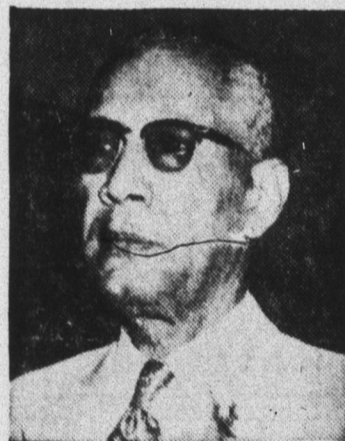
**DINE & DANCE**  
at the  
**SILVER HORSE SHOE**  
WEDNESDAY, FRIDAY & SATURDAY NIGHTS  
Morrsville, N. C.  
1 MILE ON 70-OLD RALEIGH ROAD

**Solite BUILDING BLOCKS**  
Solite - Concrete Cinder Blocks  
When in need of blocks for building, call us for immediate delivery.

**STANDARD CONCRETE PRODUCTS CO.**  
TE 2-2168  
N. McDowell St. Raleigh

FOR REPAIRS TO ANY TV PHONOGRAPH TAPE RECORDER TRANS. RADIO —OR— ANY SMALL APPLIANCE  
CALL TE 2-3950 OR VA 8-2343

**TAYLOR RADIO & Electrical Co.**  
The House That Service "BUILT"  
224 E. MARTIN ST.

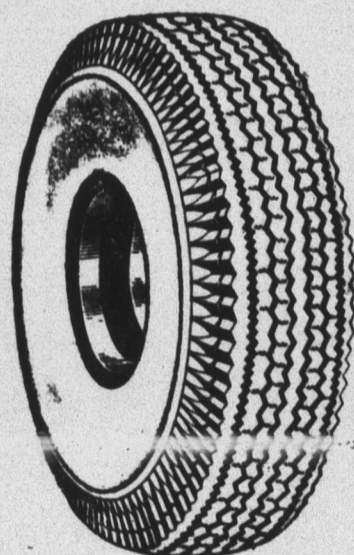


DR. C. D. PETTAWAY, of Little Rock, President of the National Baptist Convention of America, the nation's oldest national Negro Baptist organization, said that resolutions passed at the forthcoming annual convention in Dallas, Sept. 4-8 will strongly endorse President Kennedy's civil rights program and urge more legislative action in the field of social action. Host to the convention, which will be the 83rd, will be Rev. B. E. Joshua, pastor of Munger Ave. Baptist Church, Dallas. (ANF Photo).



**NEW PRESIDENT OF NIA** — William A. Clement, vice president and agency director of the North Carolina Mutual Life Insurance Company, has been elected president of the National Insurance Association, which held its 43rd Annual Meeting in Chicago last week at the Sheraton-Chicago Hotel. He was elected to office on Aug. 22. The Association is comprised of 49 companies and six associations. There were more than 350 registered delegates present. Clement, who succeeds George A. Beavers, chairman of the board of Golden State Mutual, has served the NIA as secretary and as a member of its board of directors.

## TOP QUALITY KRAFT RECAPPING



**SAVE**  
On New Tire Cost  
• Modern Tread Design  
• 8-Hour Service  
• Same Quality Rubber as Used in New Tires  
• Easy to Balance

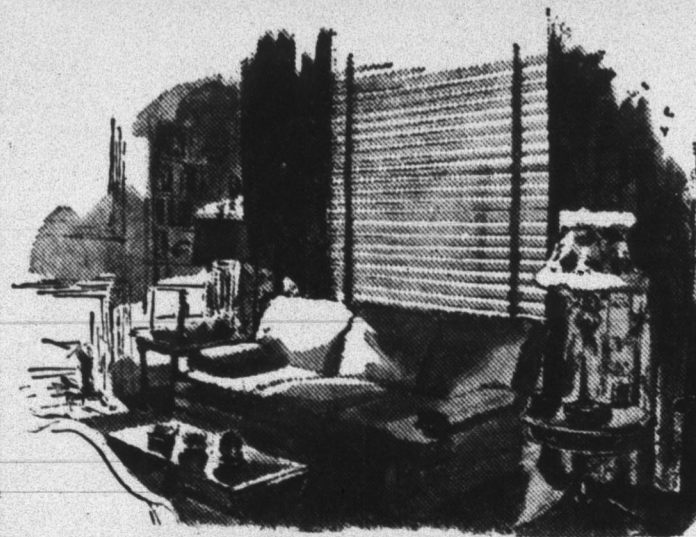


Terms To Suit You!

14 and 15 INCH TIRES RE-CAPPED

**HUNT GENERAL TIRE CO.**  
428 S. McDOWELL ST. PHONE TE 2-0571

## BARGAINS in FURNITURE



**Easy Terms**

**R. E. Quinn Furniture Co.**  
108 E. MARTIN ST. Your Capital City Tel. TE 2-4471



STILL PLENTY of TIME TO PLAY SPELL CASH

**IT'S FREE**

Amazing Circus in the world now showing at your Cameron Village Store, Thurs., September 7th.

**HOT DOGS**

plus free R. C. Cola

**10¢ Ea.**

FREE FOOD FOR SHOPPERS

**EVERYTHING**

FOR LABOR DAY

**100 FREE Gold Bond Stamps**  
With This Coupon and Purchase of \$8.50 or more in Raleigh Colonial Stores.  
VOID AFTER AUG. 31, 1963  
9-3 R-100

DELTA CAN  
**SOFT DRINKS**  
**12 59¢**  
8-Oz. Cans  
With Your \$5 or More Purchase.

Stock up for the Holiday!  
YOUR NEIGHBORHOOD COLONIAL WILL BE **CLOSED LABOR DAY** Monday, Sept. 2

PRICES EFFECTIVE THROUGH SATURDAY, AUGUST 31, 1963. QUANTITY RIGHTS RESERVED.

FRESH DRESSED YOUNG, TENDER WHOLE

**FRYERS**



**lb. 25¢**

ARMOUR STAR **BACON** . . . . . lb. 65¢  
ARMOUR STAR **FRANKS** . . . . . lb. 55¢  
SWIFT'S PREMIUM SLICED **CHICKEN LOAF** . . . . . 6-oz. PKG. 69¢  
SWIFT'S PREMIUM . . . 10 PATTIES **BEEFBURGERS** . . . . . 20-oz. PKG. 99¢

ARMOUR STAR CHUNK **BRAUNSCHWEIGER** . . . . . lb. 39¢  
ARMOUR STAR **CHUNK SALAMI** . . . . . lb. 49¢

FRESH, BOSTON BUTT **PORK ROAST** . . lb. 39¢

FRESH, CRISP, CALIFORNIA ICEBERG **LETTUCE** . . . . 2 LARGE HEADS 29¢

FIRM, GOLDEN-RIPE **BANANAS**  
POUND FOR **9¢**

SAVE 5¢ ON MRS. FILBERT'S **MARGARINE** . . . . 2 1/2 LBS. 49¢

SAVE 8¢ ON OUR PRIDE SANDWICH **BREAD**  
24-OZ. LOAF **17¢**

SNACK **POTATO CHIPS**  
SAVE 20¢  
10-OZ. TWIN PACK **39¢**

VAHLSING FROZEN **FRENCH FRIES**  
5 -LB. BAG **69¢**

SAVE 1¢ ON NU-TREAT **Ice Milk** . . . . HALF GALLON **37¢**  
SAVE 14¢ ON C.S. PREMIUM QUALITY **Mayonnaise** FULL QUART **28¢**  
LIMIT: ONE WITH YOUR \$5.00 OR MORE ORDER.

SAVE 32¢ ON BLACK PANTHER HARDWOOD

**CHARCOAL 20** -L.B. BAG **77¢**  
LIMIT: ONE WITH YOUR \$5.00 OR MORE PURCHASE.

**50 FREE Gold Bond Stamps**  
With This Coupon and Purchase of 14-oz. RAID HOUSE & GARDEN OR FLYING INSECT BOMB  
VOID AFTER AUG. 31, 1963  
9-3 R-50

**25 FREE Gold Bond Stamps**  
With This Coupon and Purchase of POUND CUP CHEF'S PRIDE POTATO SALAD  
VOID AFTER AUG. 31, 1963  
9-3 R-25

**50 FREE Gold Bond Stamps**  
With This Coupon and Purchase of 16-oz. Size 1/4 Round Chocolate 5 Layer Cakes or Angel Food Ring  
VOID AFTER AUG. 31, 1963  
9-3 R-50

**25 FREE Gold Bond Stamps**  
With This Coupon and Purchase of POUND CUP CHEF'S PRIDE COLE SLAW  
VOID AFTER AUG. 31, 1963  
9-3 R-25

**50 FREE Gold Bond Stamps**  
With This Coupon and Purchase of QUART GULF CHARCOAL LIGHTER  
VOID AFTER AUG. 31, 1963  
9-3 R-50

**50 FREE Gold Bond Stamps**  
With This Coupon and Purchase of ONE LB. OR MORE FRESH PRE-GROUND ROUND STEAK  
VOID AFTER AUG. 31, 1963  
9-3 R-50

**50 FREE Gold Bond Stamps**  
With This Coupon and Purchase of THREE 2-LB. BAGS E-Z LITE CHARCOAL  
VOID AFTER AUG. 31, 1963  
9-3 R-50

**25 FREE Gold Bond Stamps**  
With This Coupon and Purchase of POUND CUP CHEF'S PRIDE PIMENTO CHEESE SPREAD  
VOID AFTER AUG. 31, 1963  
9-3 R-25

**50 FREE Gold Bond Stamps**  
With This Coupon and Purchase of POUND CUP FLETCHER'S PORK BARBECUE  
VOID AFTER AUG. 31, 1963  
9-3 R-50

**100 FREE Gold Bond Stamps**  
With This Coupon and Purchase of 3-LB. TIN MORRELL'S CANNED HAM  
VOID AFTER AUG. 31, 1963  
9-3 R-100

BIG STAR WHITE **PAPER PLATES**  
PKGS. OF 100 **79¢**

CHEF'S PAK **PAPER CUPS**  
PKGS. OF 200 **79¢**

SOFTEX **NAPKINS**  
PKGS. OF 200 **29¢**

RED GATE SWEET MIXED **PICKLES**  
QUART **39¢**

RED GATE SWEET **SALAD CUBES**  
12-OZ. TUB **25¢**

MT. OLIVE POLSKI **WYROS KOSHER PICKLES**  
16-OZ. TUB **29¢**

BEST GRAPEFRUIT OR **LEMONADE**  
2 1/2 GAL. CTNS. **69¢**