

Chides Publisher Who Sues NAACP For \$10 Million

"Might Spend Little For Aid," Davis Lee Advised

RICHMOND, Va. (AP)—A Negro publisher who opposes integration and seeks \$10 million damages from the NAACP for loss of revenue he said he incurred after the civil rights organization won a court order calling for the desegregation of South Carolina parks, last week was chided for being tight-fisted by a federal judge here.

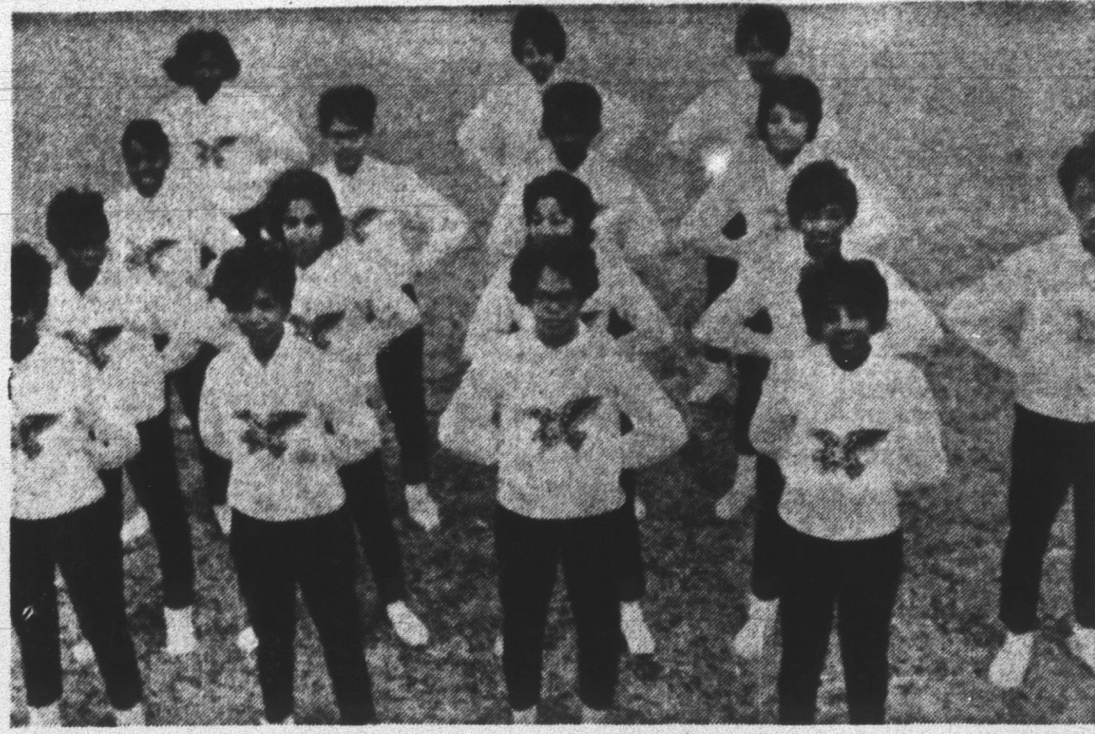
Chief Judge Simon E. Sobeloff of the 4th Circuit Court of Appeals told Davis Lee of Anderson, S. C., that it would seem that anyone seeking \$10 million in damages "might spend a little bit for legal aid." Laughter filled the courtroom.

Lee was pleading his own case before the court. He took his case to the Appellate court after Federal District Judge J. Robert Martin dismissed his suit against the NAACP last July.

Lee is opposing the NAACP's class action which resulted in the order for the desegregation of all state parks, because he says it does not represent the views of himself and many other Negroes.

Furthermore, he said the NAACP suit has hurt him financially. Lee, who represented himself before the court as the publisher of "several" weekly newspapers in the state, told the judge the \$10 million corresponded to the loss in revenue he suffered after speaking out against the NAACP's action to desegregate the parks.

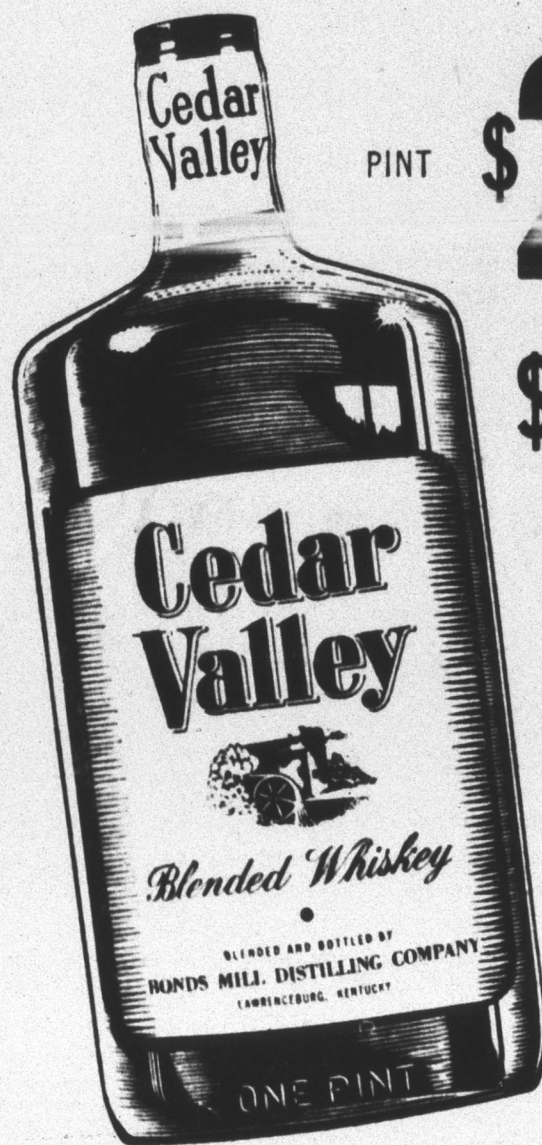
However, Michael Meltaner, an NAACP attorney, indicated he thought Lee's claim is ridiculous. He pointed out that the U. S. District Court had already dismissed Lee's suit, and that furthermore, it was clearly settled in court that Negroes have the right to be admitted to state-owned and state-operated parks and beaches.



DRILL TEAM AT ST. AUGUSTINE'S — Standing at parade rest is Saint Augustine's All-Girl Drill Team. This group is noted for its ability to bring Saint Augustine's basketball fans to their feet in long and thunderous applause. One ardent fan was quoted as saying, "The Falcons have lost a few games this season, but the Drill Team is a winner everytime." Miss Marion Watford, at far right, is drill sergeant.

ALMOST PERFECT HIDEOUT STOCKHOLM, Sweden (AP)—A 20-year-old jail escapee here found what was almost a perfect hideout from the police—a maternity hospital. After several hours of fruitless searching, police decided to check the hospital, and lo, there was their quarry, walking nervously up and down the hospital waiting room with the other pacing, nervous, but genuine fathers-to-be.

KING COLE MOTEL
2418 Murchison Rd. Fayetteville, N. C.
19 Rooms - Private and Adjoining Baths
Individual Heat - Air Conditioned
Conveniently Located Between Fayetteville State Teachers College and Fort Bragg
REASONABLE RATES!



PINT **\$2.00**

\$3.20

4/5 QUART

80 PROOF

BONDS MILL DISTILLING COMPANY
Lawrenceburg, Kentucky

Blended Whiskey
30% straight whiskey
4 years old
70% grain neutral spirits



ALUMNI DINNER PRINCIPALS — Alumni of A&T College, from the eastern section of North Carolina, last week attended a winter roundup, the Janus Day Dinner held at Rocky Mount's Wright's Restaurant. Among the principals were, from left to right: O. A. Dupree, Clinton, school principal and chairman of the A&T College Alumni Extension Committee, who organized the dinner session; Dr. Samuel D. Proctor, president of the college, who delivered the main address, and Howard C. Barnhill, Charlotte, senior public health educator and national president of the Association.

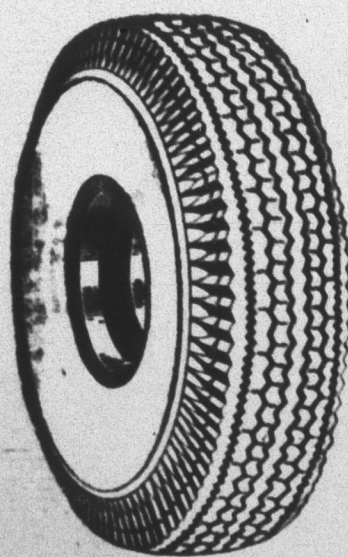


- FUEL OIL
- KEROSENE
- OLGA STOKER COAL
- BRIQUETS
- FURNACE SERVICE
- INDIAN MAID STOKER COAL
- HADEES POCAHONTAS STOVE
- NUT FOR FURNACES
- BLACK ACE EGG For Stoves and Grates

FILL UP YOUR COAL BIN OR TANK NOW!

DIAL 834-1318

TOP QUALITY KRAFT RECAPPING



SAVE

- On New Tire Cost
- Modern Tread Design
 - 8-Hour Service
 - Same Quality Rubber as Used in New Tires
 - Easy to Balance



Terms To Suit You!

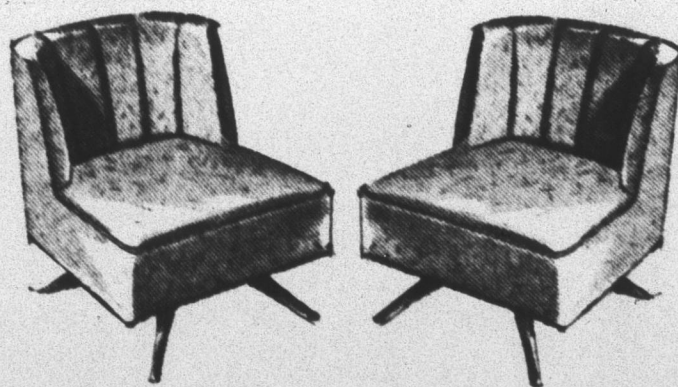
14 and 15 INCH TIRES RE-CAPPED

HUNT GENERAL TIRE CO.
428 S. McDOWELL ST. PHONE TE 2-0571

Rhodes
furniture
serving the south since 1875

Corner Wilmington and Martin Streets
Tele. TE 3-5541 or TE 3-5542

Pretty Pair



For That Special Corner In Your Home

\$39.88 The Pair
2.00 DELIVERS

For beautiful double duty, you can't beat this pretty pair of chairs by Kroehler. They decorate as well as serve as two of the most versatile chairs in your home! Deeply cushioned for enduring comfort! Smartly tailored for pridelike appearance! Select a pair now and save at this special low price!

GARDEN TIME

BY M. E. GARDNER
N. C. State

"Old Sol" is asserting himself a little more each day. The days are noticeably longer so we might consider some jobs that can be done now to prepare for the urge when the temperature warms up.

Make an inventory of your tools and implements and make note of any that need repair. Chances are that the mower and the sprayer should be cleaned. A drop of oil, a thimbleful of grease or a new spark plug will make for smoother operation and prevent breakdowns when operating. Sharpening the mower blades now, whether rotary or cylinder, will save time when the rush comes. Sharpen the hoe. It is still a good weed killer and the safest.

Edge the walks and driveways where grass has overgrown. Look over the garden furniture and re-

pair, paint, varnish or stain, if needed. The outdoor grill may need attention too.

Topdress the lawn. Use equal volumes of good topsoil and old sawdust (the older the better). Place the mixture in small piles uniformly over the lawn and spread evenly with the topsoil of a garden rake. This will take some time and effort but you will surely be happy about it next summer.

Naked (bare) root plants can be planted now in the lower Piedmont and eastern Carolina. Might be best to wait until early spring in the mountains. Apples, peaches, plums, cherries, grapevines, Chinese chestnuts, etc., would be included in this group. Plants grown in containers may be planted any time during the year that the soil is in condition.

Don't set a "ten dollar plant in a ten cent hole." Always dig the

hole large enough to accommodate the root system, without crowding, and deep enough so that the plant, when set, will be as deep as it stood in the nursery row.

You can determine this by the soil ring at the base of the stem. Cover the roots thoroughly; then pack soil with your hands or feet until within about four inches of the top. Finish filling with loose dirt.

When planting container grown plants, make the diameter of the hole at least four inches wider than the container in which the plant was delivered. This will provide a good soil environment for rapid root growth.

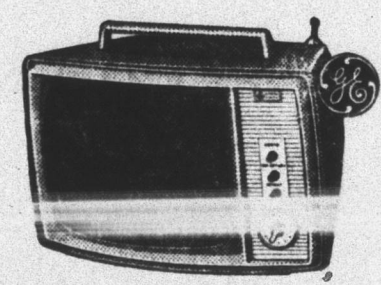
Place only topsoil around the roots. Probably the better plan is to use equal volumes of good topsoil and peat moss, well mixed.

DRIVE SAFELY!



SENSATIONAL VALUES!

APPLIANCES TELEVISION-STEREO



99⁹⁵

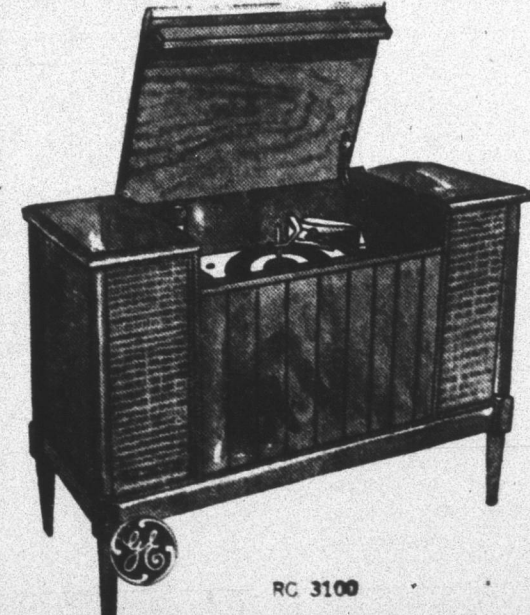
MODEL 1119G
Brightest "Daylight Blue" picture brings you a brighter, sharper, clearer image than ever before.
Best-Designed for YOU. Plus a circuit board that's guaranteed for life.



GENERAL ELECTRIC DIAL-DEFROST REFRIGERATOR

Low Low Price **\$189⁹⁵** With Trade
MODEL TA-212X

- Big 10 cu. ft. fresh food section.
- Porcelain vegetable drawer.
- Door storage . . . bottom shelf holds 1/2 gallon milk containers, tall bottles.
- Only 28 inches wide. Needs no door clearance at side.
- Full width freezer — 1.8 cu. ft. holds up to 63 lbs. Side-hinged door.
- Chiller tray holds up to 19 lbs. Low temperature storage for desserts, meats . . . chill soft drinks.

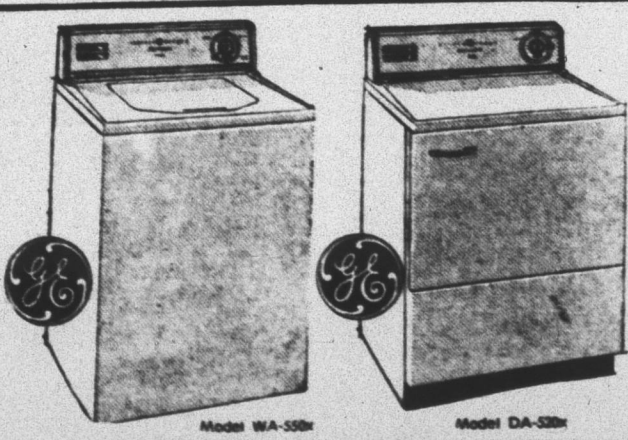


G-E STEREO CONSOLE COMPACT THE WESTPORT II

RC 3100

- All wood cabinetry
- 4-speed automatic changer with automatic shut-off
- Two 6"x9" oval speakers with coaxial tweeter cones
- Dual channel stereo amplifier
- Loudness, balance and tone controls
- Diamond stylus
- G-E C-100 cartridge

Only **\$129⁹⁵**



GENERAL ELECTRIC Filter-Flo Washer

ONLY **\$159⁹⁵** With Trade

- Big . . .
- Water saver load selection
- Two wash cycles
- Two wash temperatures
- Spray rinse

High Speed Dryer

ONLY **\$119⁰⁰** With Trade

- Big 12 lb. clothes capacity
- High-speed drying system
- Three heat selection
- Variable time dry control
- Full cycle

EASY TERMS, LOW MONTHLY PAYMENTS!
A COMPLETE LINE OF G. E. MERCHANDISE

HOBBY'S SUPPLY CO., INC.

Phone 7-2321 Cary, N. C.