



THE SMART DRESSY EFFECT THAT YOU WANT

It built up my "Shield Brand" suit from start to finish. The good looks, good fit and guaranteed...

Learn how to get the new patterns and how to make your own dress.

T. HILL FARTHING, Boone, N. C.

FORD ROADSTER—PULLS LIKE new, guaranteed condition. New tires and top, chains, jack, etc. Must sell at once. Sacrifice sale price only \$150.00. 1-2 down, terms on balance. Discount for cash in full. See or write W. A. Watson, Yuma, N. C. 2c

NOTICE

APPALACHIAN and WESTERN NORTH CAROLINA RAILROAD, a corporation to be formed in accordance with the public laws of the state of North Carolina, 1923, chapter 116, acting under a special commission provided for by the laws of said state 1921, chapter 148, and 1923, chapters 316 and 121, hereby gives notice that on the 2nd of August 1924 it filed with the Interstate Commerce Commission at Washington, D. C. its application for a certificate of public convenience and necessity to construct a line of railroad extending from Taylorsville Alexander county, North Carolina northwesterly to North Wilkesboro Wilkes county North Carolina, thence northwesterly to West Jefferson Ashe County, North Carolina, thence westerly to Mountain City, Johnson county, Tennessee, or a line of railroad extending from said Taylorsville northwesterly to North Wilkesboro, thence westerly to Boone, Watauga county North Carolina, thence northwesterly to Butler, Johnson county, Tennessee, a line of railroad extending from Doughton, Wilkes county, North Carolina northwesterly to Sparta, Allegheny county, North Carolina, then northwesterly to Smith West Jefferson, thence westerly to Mountain City, Johnson County, Tennessee; the total main track mileage of said railroad to be approximately one hundred and twenty-five (125) miles.

APPALACHIAN and WESTERN NORTH CAROLINA RAILROAD.

Mrs. A. R. Weaver



A Mother's Story! Young Mothers Should Heed This Advice

Charlotte, N. Car.—"I am glad to recommend Dr. Pierce's Favorite Prescription to the young mother who has need of a tonic and nerve, for I am very sure it was of benefit to me in my own young motherhood. It quiets the nerves and strengthens every part of the body."—Mrs. A. R. Weaver, 807 N. Davidson St. You better go now to your nearest drugist and obtain this wonderful woman's tonic, the Prescription of Dr. Pierce to be had in tablets or liquid; or write Dr. Pierce's Invalids' Hotel, Buffalo, N. Y., for free medical advice. Send 10c for trial pkg. tablets.

NOTICE OF MORTGAGE SALE

Under and by virtue of the power of sale contained in a certain mortgage deed executed by Boyd J. Harmon and wife Bessie Harmon, dated April 20, 1923, payable to Duke Ward and Sarah Ward and assigned to the Banner Elk Bank, securing the payment of four several notes therein mentioned, which said mortgage is registered in the office of the Register of Deeds of Watauga County in Book "Z" page 214, and default having been made in the payment of said notes as therein provided, the undersigned will sell to the highest bidder for cash at the court house door in Boone, Watauga county, on the 26th day of October 1924 at 12 o'clock noon, the following described tract or parcel of land and bounded as follows: Beginning on an oak and poplar North Presnell's corner, and runs S 20 degrees east 10 poles to a dogwood, thence South 10 degrees west 1 1/2 poles to a red oak, thence south 60 degrees west 22 poles to a stake thence south 87 1/2 west 11 poles to a stake, thence north 3 degrees east 6 1/2 poles to a poplar, thence north 11 degrees west 1 1/2 poles to a stake, thence south 30 degrees west 51 poles to an oak, thence west course 15 poles to a white oak, thence west 54 poles to the creek, thence down with the creek 10 poles to the old grant line thence west with said line to old Grant corner, thence down with the creek to a stake in Fate Harmon's line, thence east with his line to his corner, thence north with his line 25 poles to a white pine stump, thence east 37 3-5 poles to a stake on top of the ridge in R. W. Ward's line, thence south 11 degrees east with top of the ridge 10 poles to a stake thence south 56 degrees east with top of the ridge 12 poles to a stake thence 43 degrees east with top of ridge 8 poles to a stake, thence south 69 degrees east with top of the ridge 75 poles to a stake, thence south 30 degrees east 19 1/2 poles to the beginning, containing 48 acres more or less.

This sale is made to collect first note of \$250 subject to a payment of \$62.60 and subject to the remaining three notes. This the 8th day of September, 1924. DUKE WARD & SARAH WARD Mortgagees. THE BANNER ELK BANK, Assignee. R. W. WALL, Attorney Newland, N. C. 9-11-4p

This the 8th day of September, 1924.

DUKE WARD & SARAH WARD Mortgagees. THE BANNER ELK BANK, Assignee. R. W. WALL, Attorney Newland, N. C. 9-11-4p

WRIGLEYS after every meal

Cleanses mouth and teeth and aids digestion. Relieves that over-eaten feeling and acid mouth. Its 1-a-s-t-i-n-g flavor satisfies the craving for sweets. Wrigley's is double value in the benefit and pleasure it provides. Sealed in its Parity Package.



NOTICE

North Carolina, Watauga County. In the superior court before the clerk C. C. Farthing administrator of Fred Farthing, deceased.

vs. Minnie Watson, Dr. L. E. Farthing, Ed. G. Farthing, Zeb V. Farthing, H. Grady Farthing, Donald D. Farthing, Howard Journey, and Ralph Farrey.

By virtue of an order made in the above entitled action the undersigned will on the 6th day of October 1924 sell at public auction to the highest bidder for cash at the court house door in Boone at the hour of 3 o'clock p. m. the following described real estate lying and being in the county of Watauga, State of North Carolina, in Boone township and adjoining the lands of Henry Lewis, L. E. Farthing, Minnie Watson and others and bounded as follows: Beginning on a stake in the lower side of the Boone and Blowing Rock turnpike road and running north 3 1-2 degrees east 68 poles to a wild cherry on the bank of the ditch then east 24 poles to a stake in the old line, then south 3 1-2 degrees west with said line 70 poles to the road then north 55 degrees west with the said road 24 poles to the beginning containing 19 acres more or less.

Said lands are sold to make assets to pay the debts of the estate of Fred Farthing, deceased. This Aug. 21, 1924. C. C. FARTHING, Commissioner.

NOTICE OF MORTGAGE SALE

Under and by virtue of the power of sale contained in a certain mortgage deed executed by Boyd J. Harmon and wife Bessie Harmon, dated April 20, 1923, payable to Duke Ward and Sarah Ward and assigned to the Banner Elk Bank, securing the payment of four several notes therein mentioned, which said mortgage is registered in the office of the Register of Deeds of Watauga County in Book "Z" page 214, and default having been made in the payment of said notes as therein provided, the undersigned will sell to the highest bidder for cash at the court house door in Boone, Watauga county, on the 26th day of October 1924 at 12 o'clock noon, the following described tract or parcel of land and bounded as follows: Beginning on an oak and poplar North Presnell's corner, and runs S 20 degrees east 10 poles to a dogwood, thence South 10 degrees west 1 1/2 poles to a red oak, thence south 60 degrees west 22 poles to a stake thence south 87 1/2 west 11 poles to a stake, thence north 3 degrees east 6 1/2 poles to a poplar, thence north 11 degrees west 1 1/2 poles to a stake, thence south 30 degrees west 51 poles to an oak, thence west course 15 poles to a white oak, thence west 54 poles to the creek, thence down with the creek 10 poles to the old grant line thence west with said line to old Grant corner, thence down with the creek to a stake in Fate Harmon's line, thence east with his line to his corner, thence north with his line 25 poles to a white pine stump, thence east 37 3-5 poles to a stake on top of the ridge in R. W. Ward's line, thence south 11 degrees east with top of the ridge 10 poles to a stake thence south 56 degrees east with top of the ridge 12 poles to a stake thence 43 degrees east with top of ridge 8 poles to a stake, thence south 69 degrees east with top of the ridge 75 poles to a stake, thence south 30 degrees east 19 1/2 poles to the beginning, containing 48 acres more or less.

This the 8th day of September, 1924.

DUKE WARD & SARAH WARD Mortgagees. THE BANNER ELK BANK, Assignee. R. W. WALL, Attorney Newland, N. C. 9-11-4p

NOTICE OF MORTGAGE SALE

By virtue of the power of sale contained in a certain mortgage deed executed to the undersigned on the 26th day of August 1921 By Conrad Dotson and Greely Dotson to secure the sum of \$1800.00 together with interest on the same I will on Monday October 6, 1924 to satisfy said debt, interest and cost, sell to the highest bidder for cash at the court house door of Watauga County at Boone, N. C. between the hours of 10 a. m. and 2 p. m. the following described real estate in Boone township, Watauga county, N. C. and bounded as follows: Beginning on a white oak in the field, I. L. Smith's corner and runs south 77 degrees west up a ridge, crossing the road with J. P. Hodges line 40 poles to a locust near the top of the ridge, Smith's corner, N 59 1/2 degrees west with said line 17 2-5 poles to a bunch of chestnuts, W. B. Hodges line, a northwest direction to a stake at the public road thence with the public road to a stake near the barn, then an east direction to a birch, then a south east direction to a sourwood corner of the church lot, then a north direction with the church lot to a bunch of birches on a rock, then with the public road to a maple sprout, J. W. Smith's corner, then with J. W. Smith's line to the top of the mountain, to a stake, Dr. Hodges line, then with Hodges line to a chestnut, Hodges corner, then east with his line 32 poles to a stake in the branch then south 4 degrees west with said branch 10 poles to a stake, then south 35 degrees west with same 19 1/2 poles to a stake in H. F. Dotson's line, then north 65 degrees west with his line 9 poles to a stake, his corner, then south 25 degrees west with his line 21 poles to a stake, his corner; then north 65 degrees west with J. P. Hodges line 13 2-5 poles to the beginning containing 40 1/2 acres and 14 square rods, more or less. This the 1st day of September 1924. FRED HATLEY, Mortgagee. 9-1-4p

NOTICE OF MORTGAGE SALE

By virtue of the power of sale contained in a certain mortgage deed executed to the undersigned on the 26th day of August 1921 By Conrad Dotson and Greely Dotson to secure the sum of \$1800.00 together with interest on the same I will on Monday October 6, 1924 to satisfy said debt, interest and cost, sell to the highest bidder for cash at the court house door of Watauga County at Boone, N. C. between the hours of 10 a. m. and 2 p. m. the following described real estate in Boone township, Watauga county, N. C. and bounded as follows: Beginning on a white oak in the field, I. L. Smith's corner and runs south 77 degrees west up a ridge, crossing the road with J. P. Hodges line 40 poles to a locust near the top of the ridge, Smith's corner, N 59 1/2 degrees west with said line 17 2-5 poles to a bunch of chestnuts, W. B. Hodges line, a northwest direction to a stake at the public road thence with the public road to a stake near the barn, then an east direction to a birch, then a south east direction to a sourwood corner of the church lot, then a north direction with the church lot to a bunch of birches on a rock, then with the public road to a maple sprout, J. W. Smith's corner, then with J. W. Smith's line to the top of the mountain, to a stake, Dr. Hodges line, then with Hodges line to a chestnut, Hodges corner, then east with his line 32 poles to a stake in the branch then south 4 degrees west with said branch 10 poles to a stake, then south 35 degrees west with same 19 1/2 poles to a stake in H. F. Dotson's line, then north 65 degrees west with his line 9 poles to a stake, his corner, then south 25 degrees west with his line 21 poles to a stake, his corner; then north 65 degrees west with J. P. Hodges line 13 2-5 poles to the beginning containing 40 1/2 acres and 14 square rods, more or less. This the 1st day of September 1924. FRED HATLEY, Mortgagee. 9-1-4p

NOTICE OF MORTGAGE SALE

By virtue of the power of sale contained in a certain mortgage deed executed to the undersigned on the 26th day of August 1921 By Conrad Dotson and Greely Dotson to secure the sum of \$1800.00 together with interest on the same I will on Monday October 6, 1924 to satisfy said debt, interest and cost, sell to the highest bidder for cash at the court house door of Watauga County at Boone, N. C. between the hours of 10 a. m. and 2 p. m. the following described real estate in Boone township, Watauga county, N. C. and bounded as follows: Beginning on a white oak in the field, I. L. Smith's corner and runs south 77 degrees west up a ridge, crossing the road with J. P. Hodges line 40 poles to a locust near the top of the ridge, Smith's corner, N 59 1/2 degrees west with said line 17 2-5 poles to a bunch of chestnuts, W. B. Hodges line, a northwest direction to a stake at the public road thence with the public road to a stake near the barn, then an east direction to a birch, then a south east direction to a sourwood corner of the church lot, then a north direction with the church lot to a bunch of birches on a rock, then with the public road to a maple sprout, J. W. Smith's corner, then with J. W. Smith's line to the top of the mountain, to a stake, Dr. Hodges line, then with Hodges line to a chestnut, Hodges corner, then east with his line 32 poles to a stake in the branch then south 4 degrees west with said branch 10 poles to a stake, then south 35 degrees west with same 19 1/2 poles to a stake in H. F. Dotson's line, then north 65 degrees west with his line 9 poles to a stake, his corner, then south 25 degrees west with his line 21 poles to a stake, his corner; then north 65 degrees west with J. P. Hodges line 13 2-5 poles to the beginning containing 40 1/2 acres and 14 square rods, more or less. This the 1st day of September 1924. FRED HATLEY, Mortgagee. 9-1-4p

NOTICE OF MORTGAGE SALE

By virtue of the power of sale contained in a certain mortgage deed executed to the undersigned on the 26th day of August 1921 By Conrad Dotson and Greely Dotson to secure the sum of \$1800.00 together with interest on the same I will on Monday October 6, 1924 to satisfy said debt, interest and cost, sell to the highest bidder for cash at the court house door of Watauga County at Boone, N. C. between the hours of 10 a. m. and 2 p. m. the following described real estate in Boone township, Watauga county, N. C. and bounded as follows: Beginning on a white oak in the field, I. L. Smith's corner and runs south 77 degrees west up a ridge, crossing the road with J. P. Hodges line 40 poles to a locust near the top of the ridge, Smith's corner, N 59 1/2 degrees west with said line 17 2-5 poles to a bunch of chestnuts, W. B. Hodges line, a northwest direction to a stake at the public road thence with the public road to a stake near the barn, then an east direction to a birch, then a south east direction to a sourwood corner of the church lot, then a north direction with the church lot to a bunch of birches on a rock, then with the public road to a maple sprout, J. W. Smith's corner, then with J. W. Smith's line to the top of the mountain, to a stake, Dr. Hodges line, then with Hodges line to a chestnut, Hodges corner, then east with his line 32 poles to a stake in the branch then south 4 degrees west with said branch 10 poles to a stake, then south 35 degrees west with same 19 1/2 poles to a stake in H. F. Dotson's line, then north 65 degrees west with his line 9 poles to a stake, his corner, then south 25 degrees west with his line 21 poles to a stake, his corner; then north 65 degrees west with J. P. Hodges line 13 2-5 poles to the beginning containing 40 1/2 acres and 14 square rods, more or less. This the 1st day of September 1924. FRED HATLEY, Mortgagee. 9-1-4p

NOTICE OF MORTGAGE SALE

By virtue of the power of sale contained in a certain mortgage deed executed to the undersigned on the 26th day of August 1921 By Conrad Dotson and Greely Dotson to secure the sum of \$1800.00 together with interest on the same I will on Monday October 6, 1924 to satisfy said debt, interest and cost, sell to the highest bidder for cash at the court house door of Watauga County at Boone, N. C. between the hours of 10 a. m. and 2 p. m. the following described real estate in Boone township, Watauga county, N. C. and bounded as follows: Beginning on a white oak in the field, I. L. Smith's corner and runs south 77 degrees west up a ridge, crossing the road with J. P. Hodges line 40 poles to a locust near the top of the ridge, Smith's corner, N 59 1/2 degrees west with said line 17 2-5 poles to a bunch of chestnuts, W. B. Hodges line, a northwest direction to a stake at the public road thence with the public road to a stake near the barn, then an east direction to a birch, then a south east direction to a sourwood corner of the church lot, then a north direction with the church lot to a bunch of birches on a rock, then with the public road to a maple sprout, J. W. Smith's corner, then with J. W. Smith's line to the top of the mountain, to a stake, Dr. Hodges line, then with Hodges line to a chestnut, Hodges corner, then east with his line 32 poles to a stake in the branch then south 4 degrees west with said branch 10 poles to a stake, then south 35 degrees west with same 19 1/2 poles to a stake in H. F. Dotson's line, then north 65 degrees west with his line 9 poles to a stake, his corner, then south 25 degrees west with his line 21 poles to a stake, his corner; then north 65 degrees west with J. P. Hodges line 13 2-5 poles to the beginning containing 40 1/2 acres and 14 square rods, more or less. This the 1st day of September 1924. FRED HATLEY, Mortgagee. 9-1-4p

NOTICE OF SALE

By virtue of the power of sale contained in a certain mortgage deed executed on the 17th day of April 1924 by J. W. Jester and wife Rosa Jester to the undersigned and registered in the office of the Register of Deeds for Watauga county in Book Z, page 301, to secure the payment of a certain note therein mentioned said note having been due and payable on the 7th day of July 1924, and default having been made in the payment of same the undersigned will on the 30th day of September 1924 between the hours of 10 a. m. and four p. m. at the court house door in the town of Boone, N. C. offer for sale at public outcry to the highest bidder for cash the following tract of land lying in Watauga county, known as a part of the W. W. Jester lands, on the waters of Watauga river on the north side of Grandfather mountain adjoining the lands of J. P. Barlow, J. R. Berry, and others.

Beginning at a sugar tree in Rebecca Prestwood's line and runs S. E. to David Andrews' line thence with David Andrews' line 30 poles to a chestnut, Luther Banner's corner, thence east with Luther Banner's line 30 poles to a stake on the top of a ridge, thence north east with said line 24 poles to a tamarack J. P. Barlow's corner, thence with said line to a water oak, J. P. Barlow's and J. V. Prestwood's corner; thence with said Prestwood's line to the beginning, containing 50 acres. To satisfy said debt, interest, cost and expense of sale. Posted this Aug. 23, 1924.

AVERY COUNTY BANK Mortgagees. Newland, N. C.

Subsribe For Your County Paper.



A BANK ACCOUNT

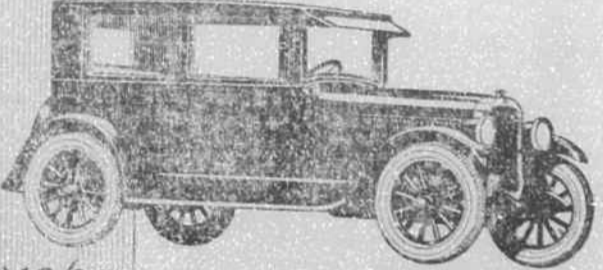
will do more to systemize your business than any other dozen of things. It will prevent mistakes promote economy and prove an incalculable point to the business man

Bank of Blowing Rock Blowing Rock, N. C.

PATENTS

Obtained. Send model or sketch and we will promptly send you a report. Our Book on Patents and Trade-marks will be sent to you on request.

D. SWIFT & CO. PATENT LAWYERS 305 Seventh St., Washington, D.C. Over 34 Years' Experience



1065 OLDSMOBILE

Announces the Fisher-Built Coach

A creation that embodies everything for which the name Fisher stands! Velour upholstered—and roomy and comfortable for five passengers! Wide doors give generous entrance space—the new patented one-piece windshield provides better ventilation and full driving vision.

And underneath this splendid coach body, with its Duco Satin finish, is the famous tried and proved Oldsmobile Six chassis. See this Coach today!

The C. M. A. C. extra road & touring plan makes a highway easy. 57 poles, 100 lbs. loading. Tax and license fee additional.

A. G. MILLER Local Agent. YUMA, N. C.

OLD SMOBILE SIX PRODUCT OF GENERAL MOTORS

Severe Pains in Side

"I HAD had quite a bad spell and sickness," writes Mrs. Emma Patrick, of Caney, Ky., "and it was an effort for me to go about my home. I had a very severe pain in my left side that almost took my breath at times. I lost my appetite. I grew thin, pale and lifeless. I fell off till I only weighed about 115 pounds. "Cardui was recommended to me and by the time I had taken one bottle I saw it was what I needed. I ate more and rested better. I kept taking it and my skin and flesh took on a more healthy color. I felt stronger and, as the nervousness left me, the pain in my side was less severe. After taking nine bottles, I eat anything, go anywhere and feel fine. I weigh 160 pounds and am well. I feel that I owe it all to having used Cardui." Pain, in certain parts of the body, is a sure indication of female complications. The treatment needed is not the use of narcotic drugs, but—

CARDUI The Woman's Tonic

134

3 PIPPINS 3

280 acres good farm land, well watered, 10 acres creek bottom three room house with outbuilding, 100 peach trees, 200 apple trees of which 100 is of the famous Stark Delicious variety. 1 mile to sand clay road. Located in Wilkes county near the Watauga line. Price only \$6.75 per acre, one half cash.

Four lots each 35 feet front, on one of the prettiest pine covered knolls in the Daniel Boone Park. All four for \$600. Quick action necessary.

The Dr. L. R. Eingham bungalow. That beautiful modern home nearly opposite Mr. Ed Coffey's with 150 feet frontage on the Boone Trail Highway, and the price is right. Easy terms. See me about these and others.

H. W. Horton REAL ESTATE AND INSURANCE Office 2nd floor my garage building.

SERVICE

We strive to render service to all our depositors and be something more than just a storehouse for money.

If our bank was only a depository we could get along nicely with a little room and a window like the window in a box office, and a table with pen, ink, deposit slips, checks and a vault in which the money might be stacked. But we don't do business that way.

We have comfortable quarters and maintain a staff of officers who are on hand all the time to greet depositors and render them whatever assistance they need in their affairs. That's modern banking and ours is a modern bank. Come in and talk it over.

The Peoples Bank & Trust Company

Tutt's Pills. Unrivalled as an ANTI-BILIOUS MEDICINE. Stimulate torpid liver, strengthen digestive organs, regulate the bowels, relieve sick headache.