

The Watauga Democrat

The RIVERS PRINTING COMPANY

Established in 1888 and Published for 45 Years by the late Robert C. Rivers

PUBLISHED EVERY THURSDAY

SUBSCRIPTION RATES: One Year \$1.50, Six Months .75, Four Months .50

R. C. RIVERS, JR., Publisher

Cards of Thanks, Resolutions of Respect, Obituaries, etc. are charged for at the regular advertising rates.

Entered at the Postoffice at Boone, N. C. as Second Class Matter.

THURSDAY, MAY 30, 1935

BUILDING ACTIVITY

If activity in the building trades is yet to be taken as a yardstick of economic healthfulness, it is scarce to be doubted that a large measure of prosperity has returned to this community...

The number of new buildings erected in Boone during the past winter, and in process of construction at the present time is gratifyingly large...

During the worst of the depression few improvements were made in the town, but now, since the upward trend is becoming more and more manifest...

HEADS UP

(New Hampton Tribune)

A young man once found a five-dollar bill in the road. From that time on he never raised his eyes from the ground when he walked...

Some watch their competitors' prices and sales so intently that they lose all perspective about their own business. From year to year they pick up buttons and pins from the ground...

What a pity that more businessmen do not keep their heads up and view their business and business life with more perspective. Were this done what a happier and sounder business world this would be.

PIONEERING, NEW STYLE

(The New Yorker)

Now, at seedtime, we send our greetings to the colonists who went out from their old homes in Minnesota to their new homes in the valley of Alaska. It is inspiring to find that there are still pioneers among us...

MARKING THE DEPRESSION YEARS

Often a civilization is marked by the habits, practices, follies, and amusements of its people. The Buffalo Times thus marks the rise of American civilization through the depression years...

THE BOOK

the first line of which reads "The Holy Bible" and which contains Four Great Treasures...

By BRUCE BARTON

MARY, MOTHER OF JESUS

We who call ourselves Protestants have been almost rude in our attitude toward the mother of Jesus. What beauty of face and figure there must have been in her...

My soul doth magnify the Lord...

And my spirit hath rejoiced in God my Saviour. For he hath regarded the low estate of his handmaiden...

For he that is mighty hath done to me great things, and holy is his name. And his mercy is on them that fear him from generation to generation.

Finish the reading of that great hymn of praise as Luke records it in his first chapter. Look in your reverence Bible at the little index letters sprinkled through the text...

This young woman, sixteen or seventeen, perhaps, had read the literature of her nation and had made it her own. Her mind and spirit were richly stored...

Motherhood is the most expensive of all earth's luxuries, and being the mother of the Messiah was a costly privilege.

Think what it meant to Mary to have to go into Egypt and remain there while Joseph, resourceful and strong, thought he was struggling to support the family...

Think of the bewildering problems and perplexities of having a son grow up with a ambitions and expressions which she and Joseph could only dimly apprehend...

And they [Mary and Joseph] understood not the saying which he [Jesus] spake unto them...

Next Week: Mary Stands Firm.

Hickory is a tree of wide range and was formerly found in every state east of the Mississippi and in several on the western side of the river...

ALUMINUM CAKE PAN



Farmers Hardware and Supply Company BOONE, N. C.

The Family Doctor

By DR. JOHN JOSEPH GAINES

HEART WARNING

Heart warnings are evidently still on the increase. You read the newspaper and learn of the death of maybe a bosom friend from "heart disease"...

If you have grown very fat, from over-eating, or, possibly underexercise, such as makes you short of breath...

Pain in either right or left chest, running down the left arm may be a heart symptom; always rely on the doctor.

But the surest sign of weak heart is, painless swelling of the feet. Go to your doctor and take him a bottle of fresh morning urine.

It is up to you to be examined carefully from time to time. Nearly all heart diseases can be corrected if taken in time by competent guidance.

OPEN FORUM

Readers are invited to contribute to this department. Profit may be derived from these letters. Name of writer must accompany all manuscript and brevity is urged.

IS SUCH RELIGION?

The lawyers, the statesmen, the patriots, the philanthropists, all want a religion that shall blend with these days of earth and help in its liberty, in its laws, in its arts, its letters, its honors, its pleasures...

EDW. N. HAHN, Boone, N. C.

THE REVISED TOWNSEND PLAN

The Townsend Pension Bill for all citizens, man or woman, over the age of seventy years who wish to apply has been slightly revised. The Townsend Old Age Pension organization, backed by thirty million voters, has agreed to accept whatever amount the two per cent transaction sales tax produces each month...

LEST WE FORGET

by A. B. Chapin

"Justice to the War wounded, Justice to the War dead, Justice to the American People."



portable among the total pensioners for the amount of revenue collected by the transactions tax during the first month, the 6th month they would pay out whatever was collected the second month, likewise, or and one, leaving four months revenue in the Treasury all the time.

The Townsend organization is now arranging to put organizers in every Congressional District and County in the United States, organizing Townsend clubs.

W. B. FISHER, Assistant State Organizer, Andrews, N. C.

SPRING CALVES MAKE BETTER BEEF CATTLE

Careless breeding methods are costing North Carolina beef cattle growers large sums of money. One of the most serious faults is that of allowing the bull to run with the herd throughout the year...

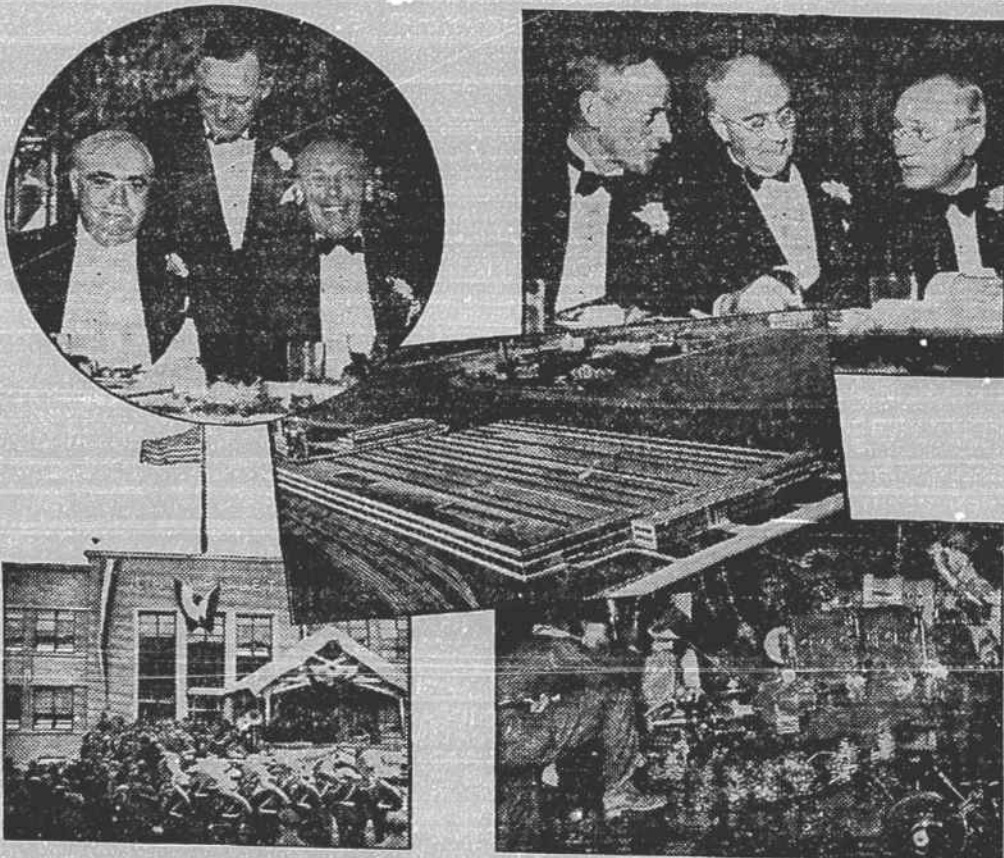
a poor condition, and the calves fail to make a good growth. Death losses of cows and calves are increased. Case further stated that calves which do not get a good growth early in life seldom develop into high grade animals.

Records have shown that spring calves gained an average of 271.5 lbs. from May 1st to November 1st, while fall calves gained only 199.5 pounds in the same length of time.

Democrat Ads Pay

OH SO CHEAP A Few Good Used Ice Refrigerators If interested in securing a rare bargain see FARMERS HARDWARE & SUPPLY COMPANY

New Chevrolet Assembly Plant Opens in Baltimore



Governmental, state and civic officials joined with the principal executives of General Motors Corporation in the formal opening of the new AN 400-car-a-year Chevrolet assembly plant in Baltimore recently.

Carolina

Theatre Blowing Rock

Friday-Saturday, May 31-1 GEORGE BURNS - GRACIE ALLEN - DIXIE LEE

Monday-Tuesday, June 3-4 DOLORES DEL RIO

Wednesday-Thurs., June 5-6 LESLIE HOWARD

THE SCARLET PIMPERNEL

Selected Short Subjects with each picture. Two shows daily beginning at 7:30 p. m.