

**Retail Business**

(Continued from page one)  
 in community projects and remember our rapid progress and normal advantages, we could forge ahead to even greater commercial leadership and prosperity than we now know.  
 Boone, county seat of Watauga county, has become the center of this thriving commercial life. Today Boone has 88 business houses and representatives. In point of seniority and consistent operation the three oldest are the Boone Drug Company, Walker's Jewelry Store and the Farmers Hardware and Supply Company, Inc. The Boone Drug Company, headed by G. K. Moose, lawyer and registered pharmacist, is the oldest of the three, having been established in 1920.

Walker's Jewelry Store, operated by Will C. Walker, was established in 1923, and is still going strong as one of the leading jewelry stores of the county. In addition to the sale of jewelry and allied lines, Mr. Walker is an expert watch repairman.

The Farmers Hardware and Supply Co., Inc., was founded in 1924 and has grown to be one of the major business establishments of Watauga county. Russell D. Hodges, president; Clyde R. Greene, secretary and general manager, and W. Cicero Greer, vice-president of the company now, were the founders of the corporation. For a brief period A. Y. Howell was associated with the concern, but withdrew shortly after the founding. Begun on a capital of \$6,000, it has grown to be an unusually wise business investment and now employs a staff of nine, including the officers of the company. From the beginning the officials of the concern have been active in the leadership of various community affairs.

Smithy's Store in Boone is one of a chain of 13 retail stores, for the most part in Western North Carolina, with two in Tennessee and one in Virginia. The Boone store is under the management of Owen Wilson, well known throughout the county. There is also a Smithy store in Bowling Rock.

The Bell-White Company, a retail department store, is managed by John Conway, who has taken an active interest in community affairs, particularly the Boone Merchants Association. Carolina Pharmacy, second oldest

drug store in Boone and a most modern establishment, is the property of M. I. and T. J. R. Clark, who manage the business. They employ a registered pharmacist and have an unusually large trade in cosmetics and sundries, among the students particularly.

Spencer Miller, who operates the world's largest wood novelties manufacturing plant, the Woodcraft Novelty and Lumber Company, with an annual payroll of \$19,000, is a local man. This is Watauga county's largest industry and employs 25 persons on an average.

Spainhour's store is one of a chain of four. The others are located in North Wilkesboro, Hickory and Elkin. The store has established a large patronage throughout the northwest. J. O. Cook is the popular manager of this establishment.

A. E. Hodges, president of the Hodges Tire Company, has established in that line the outstanding business of its kind in Watauga county. This firm does both a wholesale and retail business in all kinds of automotive equipment. The company's slogan is, "We Tire Watauga County."

A. E. Hamby and W. R. Winkler, proprietors of the Pastime Theatre, are building a new, ultra-modern theatre center for Boone. It was



J. O. Cook, manager of Spainhour's Department store, and leader in civic and religious affairs of the town.

**ORIGINAL CHARTER OF THE TOWN OF BOONE**

PRIVATE LAWS OF NORTH CAROLINA, 1871-72  
 CHAPTER L

An Act to Incorporate the Town of Boone, in the County of Watauga:

Section 1. The General Assembly of North Carolina do enact, That the town of Boone, in the county of Watauga, is hereby incorporated in a body politic and corporate by the name and style of the commissioners of the town of Boone.

Sec. 2. That the corporate limits of said town shall be as follows: One mile east, west, north and south from the courthouse, then a line shall be marked out commencing at the terminus of the mile running east of the courthouse; thence to the terminus of the mile west of the courthouse; thence to the mile south of the courthouse; thence to the terminus of the mile east of the courthouse, the beginning.

Sec. 3. That J. W. Councill, Dr. J. G. Rivers, T. J. Coffey, J. W. Hall and J. B. Todd, be appointed commissioners of said town, and shall hold said office of commissioner until their successors shall be elected and qualified.

Sec. 4. That W. L. Bryan be appointed mayor of said town, and to hold office until his successor shall be elected and qualified.

Sec. 5. That the election of mayor and commissioners shall be held on such day as the legislature shall prescribe, and in case of failure on the part of the legislature to prescribe such day, then on such day as the county commissioners may prescribe: Provided, Such election shall be held annually.

Sec. 6. That the officers herein named and their successors herein named and their successors shall have all the power, immunities, and shall be subject to all the restrictions and liabilities as are enumerated in chapter one hundred and eleven of the "Revised Code," except that the county commissioners shall be substituted for a county court, named in that chapter of laws.

Sec. 7. That all laws and clauses of laws coming in conflict with this act are hereby repealed.

Sec. 8. This act shall be in force from and after its ratification.

Ratified the 23rd day of January, A. D. 1872.

hoped to have this playhouse completed and ready for opening by July 1st, but weather conditions militated against this and no date for the opening has been set. This new building, a fireproof one, will house offices and shops as well as the motion picture theatre and will be one of the biggest additions to the business section of the town. This new theatre will seat between 800 and 1,000 persons and will be furnished in the best tradition of interior decoration for the modern theatre.

The New River Light and Power Company, a subsidiary of Appalachian State Teachers College, provides light and power for the town of Boone. The electrification of the town through this agency was a long

stride in its commercial progress. Profits from this company go into a student loan fund at the college.

Almost every line of business and occupation and profession is represented in Boone. The town has seven doctors of medicine and two dentists. The rapid growth of the town can be ascribed to the co-operation of all its business and professional men through the years.

"Boone tomorrow," said Mr. Greene, "will have realized its destiny as one of the outstanding mountain communities in the United States. We have every advantage for growth and I think our business men are displaying progressivism at its best."

**MILLER'S FLORAL SHOPPE**

"A Home-Town Enterprise"

Cut Flowers and Potted Plants for Every Occasion.  
 Flowers delivered by wire anywhere, any time.

IT IS ALWAYS A PLEASURE TO SERVE YOU

**The Backyard Washline**

IS THE PROCLAMATION OF AN UNPROGRESSIVE HOUSEHOLD

Boone's best washing is done efficiently, with maximum sanitation and time-saving machinery, and at minimum cost to you by our family laundry service. A trial will convince you that the Monday evening backache can be cured at small cost by letting us clean your clothes. Unload your pressing and dry cleaning problems on us, too.

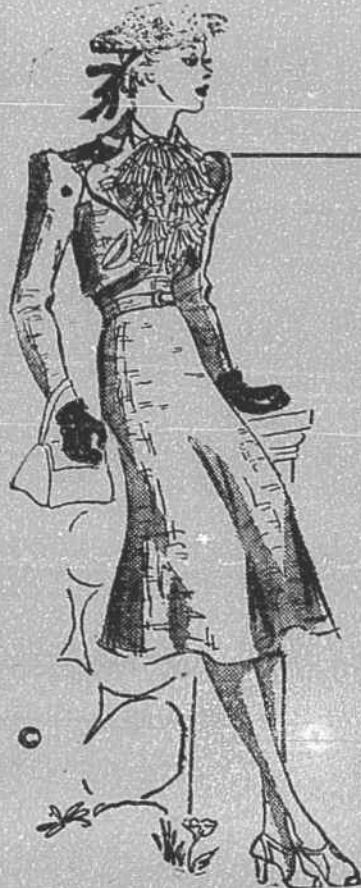
**BOONE STEAM LAUNDRY**

DRY CLEANERS

D. L. Wilcox, Proprietor

Phone 56

**Merchandise As Fine In Quality As The Record of the Watauga Democrat**



**SILK DRESSES**

Dainty and dressy frocks in crepe, lace, chiffon and marquisette. Tempting colors and styles. Sizes 12 to 42. Priced—

\$5.95 to \$14.95



**IMPORTANT HEADLINE FASHIONS**

Leghorns, Panamas, Felts. We can match any costume

97c to \$5.00

**NELLY DON AND GEORGIANNA DRESSES**

Many new materials and styles to select from—

\$1.98 to \$7.95

**SPORT DRESSES**

Novelty sportswear in all of the unusual fabrics and combinations—Sub-Deb cottons—"Gay-Gibson" silks—Poro-Spun and many other fabrics. A wide selection of colors. Price—

\$3.95 to \$12.95

**EXCLUSIVE FOOTWEAR FASHIONS**

- Sandals
- Pumps
- Oxfords
- Novelties

\$1.98 to \$5.95



**NEW GLOVES**

Linens, Calf Patents and Novelties

48c to \$1.98

**NEW BAGS**

To assemble with the new costume

48c to \$2.98



**Jarman Shoes FOR MEN**

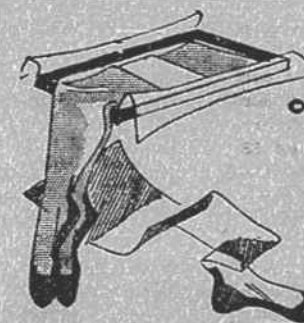
White, brown, black and tu-tones

\$2.98 to \$5.00

**For EVENING GLAMOUR**

Evening Dresses in misty marquisette and frothy chiffon nets with full swirling skirts. All pastel shades. Sizes 12 to 18.

\$3.95 to \$14.95



**ARCHER HOSIERY**

In all the new Summer shades—Fajisman, Blushtan, Spring Beauty, Sun-Dart, Sun-Up, Sun-Rise and other new shades

97c to \$1.15

**SPAINHOUR'S, Inc.**

"Boone's Shopping Center"