

## INITIAL EFFORT TO SECURE MART CITED BY WILCOX

Chamber Commerce President Refers to Struggle Against Adverse Opinion; Many Leaders Lauded; Envisions Establishment of Cannery, Hosiery Mills and Recreational Center

The Boone Chamber of Commerce, revitalized some nine months ago under the leadership of H. W. Wilcox as president, John Conway, vice-president, and Wade E. Brown, secretary, is due a major share of the credit for the establishment of the Mountain Burley Warehouse, this project having been the first concern of the commerce body following the election of the present slate of officers.

The groundwork for the warehouse movement started with the appointment of a committee, composed of H. W. Wilcox, S. C. Eggers, Willard Beach and Harry Hamilton, Jr. The first duty of the committee was to gather information and data



WADE E. BROWN, Secretary, Boone Chamber of Commerce.

for presentation to tobacco manufacturers in an effort to convince them of the wisdom of furnishing buyers for the proposed market.

The committee functioned without letup, and despite frequent predictions of many citizens that the fruition of the proposal constituted a physical impossibility, the work went on with increasing obligations and responsibilities confronting the sponsors. Conferences were to be held in Winston-Salem, Greensboro, Durham, Raleigh, Reidsville, contacts were to be made at Louisville and Lexington, Ky., aid of national leaders in Washington was to be sought.

### An Arduous Task

All in all, the task was the greatest ever assumed by a local group, and the consummation of the project is a tribute to the leadership and team-work of our people.

The spirit of the Chamber of Commerce attracted the support of many influential persons throughout the country, says President Wilcox, who

(Continued on page five)

## Tobacco Planting Of 160,000 Acres Likely Next Year

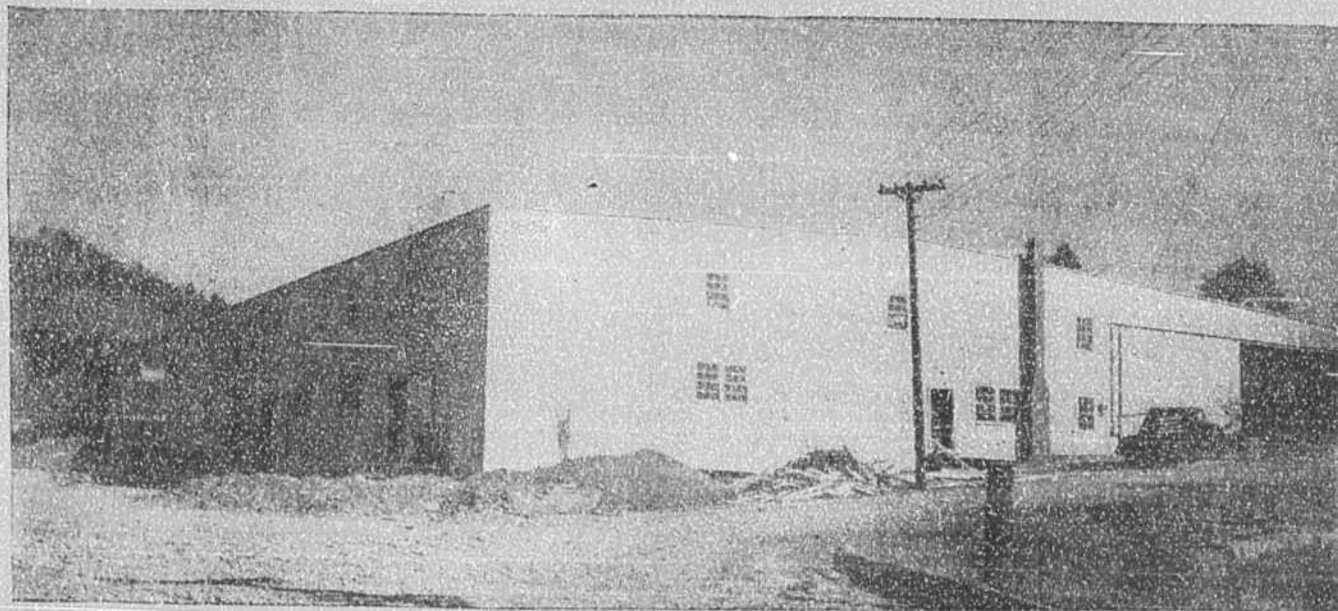
Washington, Nov. 18.—Federal farm officials indicated today the 1940 AAA planting allotment for flue-cured and dark air-cured tobacco would be about 160,000 acres, the same as last year's.

Officials said such an allotment met the general approval of representatives of the dark tobacco trade at a conference here today.

While agreeing that there was no surplus of domestic grades of dark tobacco, officials and growers considered it unwise to extend acreage because of the "uncertain" export situation.

J. B. Huston, assistant agricultural adjustment administrator, indicated that the government would continue a price-bolstering loan program on this type of tobacco next year.

## Boone's Newly-Completed Mountain Burley Warehouse



The above photograph shows the modern Mountain Burley Warehouse at Boone just before completion. The building, constructed at a cost of more than \$20,000 by Ervin and West, Statesville contractors, has a floor space of 32,000 square feet, exclusive of driveways and prize rooms, and is said to be one of the most complete warehouses in the Burley belt. Tobacconists are convinced that the market, which is drawing a set of buyers representing the "Big Three" and leading independent brokers and redryers, can readily sell a quarter of a million pounds of leaf daily.

(Photo by Weston)

## BURLEY CROP THIS YEAR FAR AHEAD OF 1938 FIGURES

Madison County Leads State in Number of Growers; Weed is Grown in 24 Counties of State; Carolina Rates Sixth Among the Ten Burley Producing States

By E. Y. FLOYD

Farmers of Western North Carolina produced about 60,000 pounds more of burley tobacco this year than they did in 1938, making their crop for 1939 total 7,440,000 pounds. The production in 1938 was 7,360,000 pounds. This is substantially above the production average for the ten-year period, 1928-37, which was 5,257,000 pounds annually.

There was not much difference in the acreage planted to burley tobacco in this state this year as compared with last year. The increase in production was accounted for by a higher yield per acre. In 1938 the average yield in this state was 900 pounds per acre; this year it was approximately 930 pounds per acre. The average yield per acre for the 1928-37 period was 803 pounds, showing that growers have improved their methods of production with

(Continued on page four)

BECAUSE LIFE DEPENDS ON TIRE SAFETY—  
They Choose  
**Firestone**  
CHAMPION TIRES



**FIRESTONE WINS 20th Consecutive Victory In Indianapolis 500-Mile Race**



WILBUR SHAW, O the 1939 winner

On May 30th, Wilbur Shaw drove to his second victory in the 500-mile Indianapolis Race on Firestone Champion Tires at an average speed of 115.03 miles an hour. Champion race drivers, whose very lives and chances of victory depend on tire safety, know tire construction. That is why they select and buy Firestone Tires for their racing cars.

A merciless sun beat down upon the speedway as Wilbur Shaw drove to victory on Firestone Champion Tires. The blistering brick of the main stretch and the granite-hard surface of the turns and the back stretch put tire safety to the test supreme! Record after record was shattered. Speeds reached as high as 160 miles an hour on the straightaways, as 33 of the fastest drivers in the world waged a breathtaking battle for gold and glory.

Never before in all the history of the motor car have tires been put to such a torturous test. And never before has any tire so firmly established itself as a Champion in construction and performance, as well as in name. Here is dramatic proof of the extra strength which the revolutionary new Safety-Lock cord body provides in Firestone Champion Tires—of the extra protection against blowouts assured by the new and advanced Firestone patented Gum-Dipping process—of the extra mileage resulting from the tougher, wear-resisting rubber compounds in the sensational new Gear-Grip tread.

No longer can there be any question of which tire is safest. One tire—and only one—provides these exclusive safety construction features. One tire—and only one—has been on the winning cars at Indianapolis for 20 consecutive years.

Announcing - -  
Our Appointment as  
**KEY DEALER**  
for the Famous  
**FIRESTONE**

We are more than pleased to announce our appointment as KEY DEALER in Watauga County for FIRESTONE PRODUCTS... Tires, Tubes, Batteries, etc. . . . products well-known to the thousands of automobile and truck owners of this section . . . products that have given satisfactory service for years.

We invite the tire patronage of car, truck and tractor owners in our territory, and we pledge the lowest prices based on quality of products.

OUR NEW BUILDING, WHICH IS ALSO STOCKED WITH A HIGH-GRADE LINE OF CLOTHING, NOTIONS, SHOES, DISHES, ETC. . . .

OPENS FRIDAY, NOVEMBER 24

**BOONE TIRE & Bargain Store**

(Next Door to Sinclair Station)  
D. L. WILCOX CECIL MILLER

**Firestone**  
AUTO SUPPLY & SERVICE STORES

**ANY WINTER ITEM FOR YOUR CAR—50¢ A WEEK BUY ON BUDGET PLAN**

- 1 Heaters
- 2 Tires
- 3 Radios
- 4 Chains
- 5 Batteries
- 7 Defrosters
- 7 Anti-Freeze

Listen in The Voice of Firestone with Richard Crooks, Margaret Speaks and the Firestone Symphony Orchestra, under direction of Alfred Wallenstein, Monday evenings, N. B. C. Red Network

CASH YOUR Tobacco Checks

at

**BELK-WHITE**  
DEPARTMENT STORE

(Just Across the Street)