

The Watauga Democrat  
The RIVERS PRINTING COMPANY

Established in 1888 and Published for  
45 years by the late Robert C. Rivers

PUBLISHED EVERY THURSDAY

SUBSCRIPTION RATES:  
One Year \$1.50  
Six Months .75  
Four Months .50  
(Payable in Advance)

R. C. RIVERS, Jr., Publisher

Cards of Thanks, Resolutions of Re-  
spect, Obituaries, etc., are charged  
for at the regular advertising rates.

Entered at the Postoffice at Boone,  
N. C., as Second Class Mail Matter

THURSDAY, DEC. 14, 1939

# From Our Early Files

Items From the Democrat of  
December 13, 1900.

Stock law election for Boone  
township on next Saturday.

John F. Hardin and T. F. Coffey  
are in Virginia buying horses and  
mules for the southern market.

J. C. Ray, Esq., returned from Ra-  
leigh last Saturday where he had  
been attending a meeting of the  
state board of agriculture.

Mr. Zach Adams of Hagaman,  
was stricken with paralysis some  
days since but we are glad to learn  
that he has recovered from the ef-  
fects of the stroke.

Mr. L. N. Perkins of Lenoir, was  
in the county last week and we are  
pleased to learn that he will return  
to his home near town early next  
spring.

The telephone line from Boone to  
Blowing Rock is now again being  
thoroughly repaired, which will give  
us direct connection with Lenoir,  
Hickory and Morganton via Globe.

Mr. J. A. Edmisten and bride  
spent Monday night at Blowing  
Rock and went on to Elk Park Tues-  
day. They will return soon and oc-  
cupy their beautiful home at Blow-  
ing Rock.

Prof. Rogers was in town Satur-  
day and told us, that for the past  
three weeks, Cove Creek Academy  
has gained a pupil a day. The  
school he says, is in a most prosper-  
ous condition.

Messrs. Theodore Moretz and Wil-  
lard C. Greene, both of Stony Fork,

who have been in Illinois for the  
past nine months, returned to their  
homes last week and we presume  
they will be content with Watauga  
hereafter.

There will be a Christmas tree at  
the courthouse in Boone at night on  
Christmas eve. Let everybody put  
on something and don't forget the  
more unfortunate who are unable to  
buy for themselves, especially the  
little ones. Make their hearts hap-  
py by giving them something and  
your own happiness will be increas-  
ed.

Mr. Elbert Coffey, son of friend  
Jones Coffey and brother of T. H.  
Coffey of Blowing Rock, died at his  
home at Kelsey on Tuesday morn-  
ing from fever. He had been ill  
for some weeks and was thought to  
be some better when he relapsed  
and soon ended his suffering. Our  
deepest sympathies are extended to  
the bereaved.

Mr. Finley Gragg was in town  
Monday and told us of quite an ex-  
citing bear hunt that took place on  
the Grandfather last Friday and  
Saturday. That resulted in the kill-  
ing of a bear, that it was thought,  
would have weighed 500 pounds. It  
took a crowd of men, a pack of  
hounds and sixteen shots in the  
tough hide to subdue old bruin, but  
he died fighting.

Nearly 10,000,000 rivets were used  
in constructing the hull of the Queen  
Mary, trans-Atlantic liner.



The Weaver Brothers and Elviry give out with some real hill-  
billy music in the new comedy hit, "Jeepers Creepers," in which  
they are featured. This unusual picture will be shown at the Ap-  
palachian Theatre next week.

## Lime Available Under AAA Program

The 1940 agricultural conserva-  
tion program is similar to the 1939  
program, according to County Agent  
Harry Hamilton. The main change  
that will affect Watauga county  
farmers is that every farmer whose  
soil-building payment was less than  
\$20.00 last year will have an oppor-  
tunity to earn \$20 in soil building  
practices on the 1940 program. The  
fact that any farmer in the county  
can earn \$20 in soil-building prac-  
tices will mean that more farmers  
should take advantage of this pro-  
gram, and do their best to build up  
the fertility of their soil. Another  
change in the 1940 program is that  
any farmer can earn \$30 above his  
normal soil-building payment by  
setting out forest trees.

The county agent's office force is  
now ready to take applications for  
lime and phosphate for the 1940  
AAA program. The lime will be de-  
livered to the farmyards at \$2.00  
per ton. The farmer doesn't have to  
pay the \$2.00 because it is deducted  
from the soil-building allowance  
that is established for his farm.

The farmers can also get 47 per  
cent phosphate on the 1940 program  
without any outlay of cash.

Watauga county used more lime  
in 1939 than any other county in  
North Carolina. Since the soil-  
building payments are larger for  
the small farms this year, the coun-  
ty agents hope that more farmers  
will use lime in 1940.

## BURLEY AVERAGES 18 CENTS AT LEXINGTON

Lexington, Ky., Dec. 11.—Sale of  
approximately 2,500,000 pounds of  
burley tobacco brought an estimat-  
ed average of 18 a hundredweight  
today as the world's largest loose-  
leaf market opened a week later  
than usual.

The estimated average was \$3.95  
below opening day last year.

## Christms Special

No gift could bring more happiness to the housewife and  
all the family than one of our new

# Electroair Cleaners

now being offered especially  
for Christmas at

# \$59.50

(Plus your old cleaner)

Instantly cleans carpets and rugs, bare floors, linoleum, (mops, brooms, etc. no longer needed) drapes, curtains, upholstery, corners, bare or carpeted stairways, pets, furs and automobiles. . . . shampoos carpets and rugs like new . . . demoths closets, clothes and furniture . . . sprays paint, disinfectants, insecticide and other liquids. Purifies and deodorizes the air by the ingeniously devised, removable germ trap . . . floor polisher . . . exclusive feature delivered free with each machine, easy to use and highly efficient, dust trap—easy to empty—no unsanitary dust-leaking bag . . . no redistribution of dust and germs into the air while operating.

THE ELECTROAIR IS A PRACTICAL GIFT AND WILL  
LAST FOR YEARS

Call by our store and see a demonstration of this remarkable household helper.

PLENTY OF OTHER USEFUL AND ATTRACTIVE GIFTS  
PRICED VERY REASONABLE

# Parkway Company

Old Postoffice Building

Boone, N. C.

# Last Roundup--We Close Our Doors Sat., Dec. 23!

PRICES THAT HAVE STARTLED WESTERN NO. CAROLINA

One big table Ladies' Sweaters, 100% all-  
wool; wine, grape, teal, blue. Formerly  
sold up to \$1.29. Now only

# 69c

(Main Floor)

100 Ladies' Hand Bags, all colors, sizes  
and materials. These bags formerly sold  
up to \$1.48. Slightly shopworn. Each

# 19c

## FREE RADIO GIVEN AWAY SAT.

AT SPAINHOUR'S

One lot 86x105 Jacquard Bed Spreads;  
guaranteed fast color. First quality

# \$1.48

One lot Cotton Blankets, single bed size;  
good heavy weight and fast color, each

# 48c

(Basement)

COTTON REMNANTS 1c EACH

We will repeat this give-away value; all  
pieces are good and big and fast color

# 1c each

SATURDAY MORNING AT 9:00

Another big rack Ladies' Shoes, brown,  
black, blues; kid calf or suede, pair

# \$1.00

# SPAINHOUR'S, Boone

# NEW 1940 G-E RADIO Shoots the Works on Value



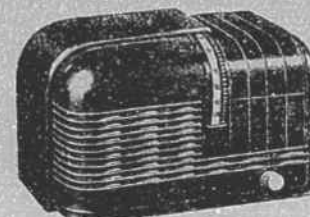
# ONLY \$89.95

## MORE RADIO FOR LESS MONEY!

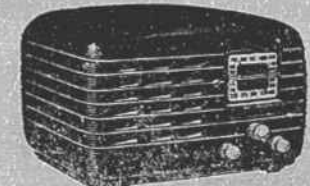
G-E Radio "Shoots the Works" with  
new features, new performance, new  
beauty — everything that spells more  
value for your money! Come in and let  
us prove it to you.

# LET YOUR EYES AND EARS DECIDE

EASY TERMS  
LIBERAL ALLOWANCE



MODEL H-500: Dynamic Speaker, 5 G-E  
Tubes, Drum-type Dial, Standard and Police  
Band, Attached Antenna, AC-DC Operation,  
Attractive Brown Plas-  
tic Cabinet. Ivory and  
Colored Finishes Also  
Available. . . . . ONLY \$10.95 up



MODEL H-620: Portable, Just Plug-in. Built-  
in Beam-scope Eliminates Ground and Aerial.  
Four Feather-touch Tuning Keys, Foreign-  
Domestic Reception, Six G-E Tubes, Drum-  
type Dial, AC-DC Operation, Handsome  
Brown Plastic Cabinet.  
Ivory and Colored Fin-  
ishes Also Available. . . . . ONLY \$19.95

G-E . . . THE RADIO WITH THE  
**BIG PLUS VALUE**

MODEL H-87: Super Beam-scope, Television  
Audio and Phonograph Key, 14-inch Dynapower  
Speaker, 9 Feather-touch Tuning Keys, Foreign-  
Domestic Reception, 8 G-E Tubes, Visualux Dial.

**MORE FEATURES FOR LESS MONEY  
MAKES G-E A LEADER!**



# New River Light & Power Co.

BOONE, N. C.