

WATAUGA DEMOCRAT

An Independent Weekly Newspaper—Established in the Year Eighteen Eighty-Eight

VOL. 53, NO. 18

BOONE, WATAUGA COUNTY, NORTH CAROLINA, THURSDAY, NOVEMBER 14, 1940

\$1.50 A YEAR

88 WATAUGANS TO BE CALLED INTO SERVICE BY JUNE 30

First Draft Quota is Fixed For State; Counties to Get Credit for Volunteers; Questionnaires Being Sent Out; South Heads Advisory Board

A total of 88 Watauga county men will be called to the colors for a year's military training between this time and June 30, 1941, it was announced, as the net quotas for each draft area board in the state were made public from the office of Governor Clyde R. Hoey.

At the same time it is said that each county is to receive credit for men who have enlisted since January 1.

The local draft board is mailing out questionnaires to registrants in the county, according to order numbers, and decision will be made upon the information furnished therein, and by such other affidavits as the registrant wishes to offer in regard to dependents, profession or physical condition.

After the draft board has made its decision, registrants may file notice of appeal with the board, but are never allowed to appear in person or through an attorney before the selective service board or the district appeals board. Registrants who desire assistance in filling out questionnaires may receive same from a member of the county advisory board, of which A. E. South is chairman.

The first 88 order numbers include the following Watauga county people:

- Order No.**
- 1—Russell Daniel Wellborn
 - 2—Calvin Ragan
 - 3—Fred William Harmon
 - 4—Thomas Russel Snyder
 - 5—Marvin Cicero Profit
 - 6—John Jefferson Conway
 - 7—William Ernest Harmon
 - 8—Thomas Earl Tugman
 - 9—MacDonald Ward
 - 10—Kenneth Herbert Mathis
 - 11—Frank Lloyd Brown
 - 12—Fred Teague
 - 13—George Grubbs Herring
 - 14—Roy Younce
 - 15—John Kay Brown
 - 16—Floyd Everett Greene

County's New Officials Will Be Sworn In First Monday in December

All Watauga county officeholders elected last week except the representative in the general assembly will take the oath of office before Clerk of Court Austin E. South on the first Monday in December, which is December 2.

Gordon H. Winkler, representative-elect, will take the oath of office when the general assembly opens session in January.

All constables will be required to post bonds with the county commissioners.

County-wide officers elected November 5 included Gordon Winkler, representative; Grady Greer, Ira Edmisten and Bert Mast, county commissioners; Miss Helen Underdown, register of deeds, and C. F. Thompson, surveyor.

Remainder of the offices subject to election were township offices of justice of the peace and constables.

Short, Short Story Contest Sponsored

The literary and education division of the Women's Worth While Club is sponsoring a short, short story contest, through the schools of the county, and all stories must be in the hands of Mrs. E. T. Glenn of Boone by November 26th for final judging. The stories, however, are to be submitted by the students of the county through their high school principals.

MARK HOLTZCLAW INJURED

Mark Holtzclaw received severe injuries on the 31st, when the car he was driving overturned in Stony Fork township, when it struck a hole in the roadway caused by the August flood. Mr. Holtzclaw suffered a broken left shoulder and other injuries. However, the last of the week he was able to return to Pittsburgh, Pa., where he has been employed for some time in the building trades.

GOV. HOEY SETS NOV. 28 AS THANKSGIVING DAY

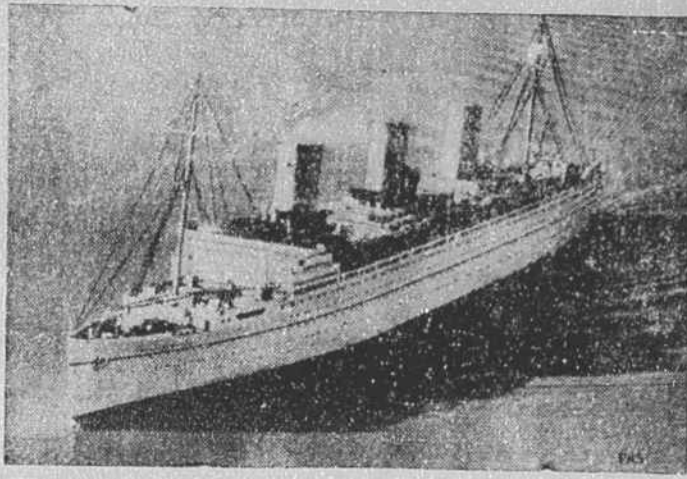
Governor Hoey has proclaimed Thursday, November 28, as Thanksgiving Day in North Carolina, setting the date a week later than the time designated by President Roosevelt.

TEACHERS' MEETING

Mr. Dale Norris, chairman of the Watauga County Teachers Association, announces a county-wide teachers' meeting to be held at Boone high school Saturday morning at 10, November 16.

Black widow spiders are so named because the females willingly make widows of themselves by eating their husbands.

EMPRESS OF BRITAIN SUNK



Berlin Germany.—A view of the Canadian-Pacific liner, Empress of Britain, fourth largest merchant vessel flying the British flag, which was sunk by a German air-raid off the coast of Ireland. Germans claim that a submarine finished the Empress as the smoking hull was being towed into port by British destroyers.

WATAUGA HIGH IN POPULATION GAIN

County Ranks Twelfth Among Counties of State in Census Increase

Watauga county ranks twelfth among the 100 counties in the state of North Carolina in percentage population gains during the 1930-40 decade, a review by the University News Letter reveals. During the period the county's population increased from 15,165 to 18,084, or a percentage gain of 19.2. During the period from 1920 to 1930 Watauga gained 12.5 per cent in population.

Almanac comes first on the list with a gain of 35.9 per cent, while Perquimans is at the foot of the list with a loss of 8.5 per cent. Eight other eastern Carolina counties show small population losses.

Caldwell county's population is 35,799 as against 28,016 in 1930, for a percentage gain of 27.8, being fourth on the list of counties. Ashe is 68th with 22,662 as against 21,019 in 1930, a percentage gain of 7.8, while Avery, Watauga's other neighbor is 32nd. Avery has a population of 13,552, had 11,803 in 1930 and has gained 14.8 per cent.

IMPORTANT NOTICE TO REGISTRANTS

Registrants with local board whose order numbers are No. 1 to No. 50, inclusive:

There have been this day mailed to you questionnaires which you are required by the selective training service act of 1940 to execute and return within five days from date hereof.

Failure to complete and return your questionnaire is an offense punishable by imprisonment and fine.

Any registrant whose order number is included above and who seeks a deferred classification, may, within five days from the date hereof, submit proper affidavits in the space provided in his questionnaire or submit them separately. Any other qualified person seeking deferred classification for the registrant shall use Form 42 (Claim for Deferred Classification by Dependent, Employer or Other Person), or other applicable forms available at the office of the local board.

Failure of the registrant or any other person concerned to exercise any right or privilege within the time authorized by the selective service regulations or within an extension of time granted by the local board, may constitute a waiver of such right or privilege.

V. C. HOWELL,
Member of Local Board.

GRAGG LOSES CO. TO CHAS. JOHNSON

Boone Candidate for State Treasurer Sixty-four Behind Winner in Watauga

Watt H. Gragg of Boone, Republican candidate for state treasurer, lost Watauga county to his successful opponent, incumbent Charles M. Johnson, by the narrow margin of 64 votes, official returns indicate.

Mr. Gragg, humorously referring to the Democratic landslide in the state, says that "scattered returns seem to indicate the success of my opponent. However, I shall not concede defeat at this time."

The county returns on the treasurer's race follows:

	Johnson	Gragg
Bald Mountain	84	109
Beaver Dam	337	126
Blowing Rock	266	251
Blue Ridge	63	271
Boone	1303	656
Cove Creek	440	387
Elk	33	129
Laurel Creek	308	229
Meat Camp No. 1	269	257
Meat Camp No. 2	42	53
North Fork	23	126
Shawneeohaw	112	155
Stony Fork	145	306
Watauga	259	455
Total	3684	3620

Funeral Services Are Held For Hugh Reese

Funeral services were conducted from the Beech Creek church Saturday afternoon for Hugh Reese, 62, prominent merchant and farmer of that section, who died at the home of John H. Bingham at Sugar Grove Friday morning.

The rites were in charge of Rev. J. W. Parker and Rev. William Stout, and interment was in the Beech Creek neighborhood cemetery.

Surviving are the widow, Mrs. Nora Bingham Reese, four brothers and five sisters: Mrs. Julia Edmisten and Mrs. Laura Edmisten, Beech Creek; Mrs. Dave Allwood, Mountain City, Tenn.; Mrs. Sarah Meadows, Dandridge, Tenn.; Mrs. Eliza Younce, Elizabethton, Tenn.; John, Grant, James and Tom Reese, all of Beech Creek.

AMATEUR PROGRAM AT MABEL SCHOOL NOV. 15

There will be an amateur contest at the Mabel school on Friday night, November 15th, 7:30 p. m. The public is cordially invited. Come and have a good time. The admission is 10 and 15 cents.

G. O. P. PROTESTS VOTE IN WATAUGA; ASKS STATE PROBE

Defeated Candidates Ask State Board of Elections to Investigate Conduct of Election in Watauga; Charge Illegal Voting; Statement by Kephart

Republican candidates for county office in last week's election on last Thursday protested the "purported results of the election held on November 5," and requested a hearing and investigation by the state board of elections "as to the conduct of the election, the manner of holding said election, and as to the illegal voting in said election."

The official protest was signed by Dr. A. P. Kephart, Republican candidate for the legislature, I. B. Wilson and John W. Hodges, candidates for county commissioners, and was presented to the county board of elections on Thursday while the canvass of the election returns was in progress.

The canvass of the vote was completed and the protest was voted down by the board.

Roby T. Greer is chairman of the local board, J. C. McConnell and R. D. Hodges being the other two members.

The document, which takes exception to the returns and canvass, is as follows:

"We, the undersigned Republican candidates in the election of November 5, hereby protest the purported results of said election held November 5 and protest the returns and canvass of the county board of elections of Watauga county and except to the said returns and canvass as being illegal and give notice of appeal to the state board of elections of North Carolina and request a hearing and investigation by the state board of elections as to the conduct of the election, and manner of holding said election, and as to the illegal voting in said election in Watauga county on November 5, 1940."

It is presumed that the state board of elections will take action on the protest when it meets on November 26th to certify the state-wide election returns.

KEPHART MAKES CHARGES

Greensboro, Nov. 11—Dr. A. P. Kephart of Blowing Rock, who was defeated in Tuesday's election in his race for the state house of representatives, stated here yesterday that a protest had been filed with the Watauga county elections board charging "flagrant violations of the election laws."

Dr. Kephart, formerly of the N. C. Woman's College faculty, said the protest was filed with the board before the votes were counted and that it asks an investigation and hearing before the state board of elections. He ran on the Republican ticket, losing to a Democrat, Gordon Winkler.

He declared the protest was lodged by a number of Republican candidates who were making races, among other charges alleged in the protest, he said, was that about 500 absentee ballots were cast in one township where there were less than 2,000 votes, a number of students attending Appalachian State Teachers College at Boone and residing elsewhere voted in Boone township after their right to vote had been challenged, and that over 500 persons in Boone township were challenged and as a result over 300 absentee ballots were withdrawn the day before election, a majority of which were students of the State Teachers College in Boone.

China shipped about \$500,000 worth of firecrackers to the United States in 1939.

Big Year For Tobacco Market Seen By Hedrick

Deceased Citizen



GEORGE W. BARNES

GEO. W. BARNES DIES THURSDAY

Pioneer Resident of the City Succumbs to Long Illness; Funeral Friday

George W. Barnes, aged 89 years, pioneer resident of this community, died at the home last Thursday after a long illness.

Funeral services were conducted from the late residence Friday afternoon at 2 o'clock, with Rev. E. C. Hodges in charge, Rev. G. A. Hamby assisting in the rites and interment was in the Hine cemetery. Attorney W. R. Lovill paid tribute to the life of the deceased.

Surviving are four sons and two daughters: Rev. Linney Barnes, Letcher, Stewart and Gurdy Barnes; Mrs. T. F. Lovill and Miss Mattie Barnes. There are 20 grandchildren and five great-grandchildren.

Mr. Barnes was reared in Meat Camp township, but had lived in Boone for the past 40 years, where he had engaged in farming activities. He had been a member of the Baptist church for 59 years, and was a charter member of the Oak Grove congregation.

"Uncle Bud," as Mr. Barnes was familiarly known, was one of the community's best and most esteemed citizens. He was possessed of a fine intellect and came to be known as the "mountain philosopher." His genial disposition, his neighborly demeanor and spirit of fair play had won for him many friends during his long life span.

Proof of New Folder Expected in Few Days

The local Chamber of Commerce has been advised that the final layout on the new community advertising folder is almost complete and that as soon as the proof is presented and approved the order will be placed.

Funds for the payment of the publicity material are still short and Commerce President H. W. Wilcox asks everyone willing to help in this undertaking to do so at once, as solicitations are expected to be completed next week.

Those making contributions last week are Gateway Cafe \$5, Mast Market \$1.00, Mrs. C. D. Taylor, Valle Crucis, \$1.

Nightingales sing as often in daytime as at night.

SALES OF THREE MILLION POUNDS BEING PREDICTED

Giant Motor Caravan of Watauga People to Tour Surrounding Areas Next Week in Interest of Boone Market; Christmas Opening is Being Arranged

Mr. W. P. Hedrick, tobacco marketing specialist with the North Carolina department of agriculture, who recently made a tour of the burley growing counties of western Carolina, predicts that the Mountain Burley Warehouses in Boone will this year sell 3,000,000 pounds of tobacco, as against the two million of last year. It will be recalled that Mr. Hedrick's prediction of last year hit the nail squarely on the head, and this year his optimism is shared by all those connected with the local warehouse.

Tuesday afternoon special committees of the Merchants Association met with members of the firm of Jones and Coleman, lessees of the warehouses and mapped an intensive publicity campaign to get the market off to a good start when it opens about December 4. A huge motordrive is being arranged to go into Ashe, Alleghany and Grayson counties, Va., November 22, when a brass band concert, the award of prizes and short talks will feature the meetings with farmers of neighboring sections.

The motordrive will leave Boone Friday morning, November 22, promptly at 8 o'clock and all Watauga county people who can are urged to join the caravan. Those who do not have transportation will be accommodated so far as possible, and it is hoped to have no less than 40 cars. The group will be at the Jefferson courthouse from 9 to 11 a. m.; Sparta courthouse 12 to 1 p. m., and at Independence, Va., from 1:30 to 2:30.

The Boone high school band will accompany the goodwill group and a genuine good time will be enjoyed by both those making the trip and the people of the sections visited.

This is the first of a series of goodwill tours which will be conducted into burley-producing counties of Carolina, Virginia and Tennessee.

Christmas Opening

The Merchants Association is also making preliminary plans for the annual Christmas opening, which is to take place simultaneously with the opening of the tobacco market. The lights will be turned on at that time, and the shopping district turned into a veritable fairyland of many colored lights. A special Christmas program will be arranged for the occasion and there will be other entertainment features.

By the end of the week it is expected that the various committees will have mapped out final details for the big celebration.

Trapping Licenses Are Now Available

Licenses for the trapping of furbearing animals in this area are now available and may be secured upon application to Mr. Bill Casey, county game warden. Mr. Casey explains that steel traps may be used only along creeks or in creeks, in the trapping of muskrats or similar animals, and that they are not to be placed on dry land, where other animals might become prey.

It is also explained that the bird season opens on November 28 and that those taking to the field should be sure to procure license in advance. Hunting licenses are on sale in every section of the county, the county license costing \$1.10, and statewide \$2.40. A combination hunting and fishing license good until July 31, 1941, and good in any part of the state, is sold for \$3.10.

Rev. Dan Graham To Preach Tuesday

Rev. Dan Graham of Blountville, Tenn., will preach at the courthouse in Boone Tuesday evening, November 19th at 7:30. Mr. Graham was to have appeared in Boone this week but a death in his home community prevented his coming.

He will also preach at Mount Vernon church on Monday evening, November 18, at 7:30, and at Baird's Creek Tuesday afternoon at 1:30.

BASKET BALL LEAGUE

All business men of the town who are interested in forming a basket ball league are requested to meet at the high school gymnasium Monday, November 18, at 7:30, and bring tennis shoes.

OFFICIAL VOTE OF WATAUGA COUNTY IN THE NOVEMBER 5 ELECTION

PRECINCT	R. Deeds				Surveyor	County Commissioners				Govern'r	Cong's	Presid't									
	Eugene Transou, D	George Cheek, R	Gordon Winkler, D	Dr. A. F. Kephart, R		Helen Underdown, D	Edna Bingham, R	C. F. Thompson, D	Joe J. Miller, R				Grady Greer, D	Ira Edmisten, D	Bert Mast, D	John W. Hodges, R	Ivey E. Wilson, R	Lloyd Wilcox, R	J. M. Broughton, D	R. H. McNeill, R	R. L. Doughton, D
Bald Mountain	83	109	82	110	33	109	81	109	82	82	81	112	110	110	86	108	87	106	81	111	136
Beaver Dam	361	126	363	125	367	122	385	125	361	365	368	124	125	122	337	130	334	132	314	136	263
Blowing Rock	263	264	261	259	291	236	262	246	259	264	264	256	250	250	271	245	270	247	266	263	263
Blue Ridge	63	277	65	276	65	277	63	277	67	64	65	273	277	277	63	274	64	274	63	263	263
Boone	1487	452	1506	453	1509	452	1466	466	1469	1477	1472	514	466	470	1326	662	1356	655	1304	731	731
Cove Creek	466	374	466	371	461	374	445	383	449	447	480	379	415	353	442	382	447	380	433	415	415
Elk	33	131	33	131	33	134	33	134	33	33	33	134	134	134	33	131	33	131	34	128	128
Laurel Creek	328	224	333	224	331	227	327	225	327	327	329	231	233	224	308	229	308	229	295	237	237
Meat Camp No. 1	277	257	272	257	279	257	276	259	272	274	271	262	258	257	272	256	270	257	257	276	276
Meat Camp No. 2	43	53	43	53	44	52	39	57	43	42	43	52	53	53	42	53	42	53	42	52	52
North Fork	25	122	28	119	26	121	25	122	25	25	25	122	122	122	23	126	31	118	122	126	126
Shawneeohaw	113	147	113	147	115	148	113	155	113	112	113	149	149	149	112	155	114	154	111	158	158
Stony Fork	146	282	148	381	147	382	142	385	142	140	140	389	383	386	144	387	146	386	138	385	385
Watauga	262	453	262	450	264	454	263	453	260	261	263	457	455	454	262	453	257	457	255	460	460
TOTAL	3950	3353	3975	3361	4015	3345	3893	3396	3902	3913	3947	3455	5430	3361	3721	3591	3759	3579	3615	3739	3739
Majority	597	614	670	497	447	483	586								130	180					124