

### OPA Price and Rationing News

**Over-Use Threatens Gas Rations**  
Part of the recent gas increases given A and B motorists may have to be recalled because of a daily over-consumption of 3,318,000 gallons of gasoline, L. W. Driscoll, OPA district director, said today.

"This over-consumption, amounting to 100,000,000 gallons a month—enough for one and a half billion miles of driving—is a serious drain on our still-tight gasoline supplies. Our reserves can't stand such tremendous pressure much longer, and if the over-use isn't stopped by the motorists themselves, we undoubtedly face a reduction in rations," Mr. Driscoll predicted.

**Slaughter Increases**  
Permission to slaughter 10 percent more cattle, sheep and lambs during accounting periods beginning on or after July 1 was granted non-federally inspected commercial slaughterers to attain a better balance in meat distribution, OPA Director Driscoll announces.

This increase brings Class 2 slaughterers' maximum percentage up from 75 percent to 85 percent for cattle with sheep and lambs raised from the former 100 percent to 110 percent. Slaughter percentages for calves and hogs are unchanged, remaining at 75 percent and 50 percent respectively.

**Maternity Care for Servicemen's Wives**  
Eight hundred and fifty thousand wives and infants of servicemen have received care or are receiving care under the emergency maternity and infant-care program, the children's bureau of the U. S. department of labor announces. In May alone, 44,000 new cases were authorized for care. Through this pro-

### Corn Is Cultivated Shallow This Year

More North Carolina farmers are practicing shallow cultivation of corn this year than ever before and more farmers are laying by the crop earlier than is usually the case because of recommendations of the agricultural experiment station at State College.

"Any farmer who will examine the roots of corn plants can convince himself that shallow cultivation and laying the crop by early are two good methods for increasing yields," says Dr. Emerson Collins, in charge of extension agronomy at State College.

He points out that relatively heavy fertilization of corn at planting, with the fertilizer well mixed in the row, gives the crop an extra quick growth and enables the farmer to lay the crop by at a much earlier period than is usually the case. "Of course, weather conditions largely determine just when is the proper time to complete cultivations," Collins explains.

gram, which is administered by State health department, under plans approved by the children's bureau, complete maternity care, including medical and hospital service, is provided for wives of servicemen, and medical and hospital care is available for their infants until they are one year of age.

Tire dealers in the Charlotte district were cautioned this week about acceptance of new tire certificates presumably issued by War Price and Rationing boards in other states, in a statement by A. M. Hollingsworth, OPA rationing officer in Charlotte.

Many tire dealers have been victimized by crooks who have tendered stolen or counterfeit tire certificates, drawn on distant boards, he said.

### Examination Announced For Rural Mail Carrier

The United States Civil Service commission has announced an examination to fill the position of rural carrier at Zionville. The examination will be held in Boone.

Receipt of applications will close July 26, 1945. The date of examination will be stated on admission cards mailed to applicants after the close of receipt of applications, and will be about 15 days after that date.

The salary of a rural carrier on a standard route of 30 miles served daily except Sunday is \$1,800 per annum, with an additional \$20 per mile per annum for each mile or major fraction thereof in excess of 30 miles. Certain allowances are also made for the maintenance of equipment. All regular, full-time rural carriers receive additional compensation at the rate of \$300 per annum. Temporary, substitute and auxiliary rural carriers and rural carriers serving tri-weekly routes receive an increase of 15 percent of their earned basic compensation, but such increase in compensation will not in any case exceed an average of \$25 per month for the fiscal year or fractional part thereof.

### Local U.S.E.S. Aids Returning Veterans

All discharged service men are urged to contact their local USES office in regard to the G.I. Bill of Rights, as pertaining to jobs, loans, both business and home. Civil service performance, unemployed compensation (readjustment allowances, self-employed readjustment allowances, education, various refresher and training courses.

The USES works in direct connection with the veterans administration, civil service and other government agencies.

### Winebarger Named Vice - President of N. C. Rural Carriers

The North Carolina Rural Letter Carriers association met in Raleigh July 4 for a one-day business conference. Officers elected were: President, W. J. Cotton, Fuquay Springs; vice-president, R. Clyde Winebarger, Boone; secretary-treasurer, Kenneth Taylor of Magnolia; chaplain, Cary P. Lowrance, Mooresville; executive committee, John Parker of Aulander, Roy Moore of Belmont, and M. F. Goins of Vale.

The secretary announced that the state membership had reached \$27, which is a 100 percent membership. North Carolina is perhaps the first state in the nation to accomplish that objective by July 4.

The main address was delivered by George Ellis of Westfield, Mass., treasurer of the National Rural Letter Carriers association, who pointed out that a national convention this year was unlikely due to ODT restrictions but that a business conference might be held at Des Moines, Iowa, Aug. 21 and 22. The president of the national association, T. G. Walters of Toccoa, Ga., is in charge of the Washington, D. C., office and is also editor of the National Rural Letter Carrier, a weekly magazine published by the national association for the benefit of the 32,000 rural carriers.

### TESTER RESIGNS AS HEAD OF BETHEL HIGH SCHOOL

Grady E. Tester, for the past two years principal of Bethel high school, has resigned to accept a position with State Farm Insurance Company of Bloomington, Ill., as district manager with headquarters in Asheville.

Mr. Tester's district will comprise 22 counties in the western part of the state. His duties will consist largely of recruiting and supervising local agents who will sell principally automobile insurance.

Mr. W. K. Wilson, of Zionville, is now representing State Farm Mutual Insurance Company in the county on a part-time basis as a local agent. He replaces Mr. Tester who started with the company about a year ago.

Despite wartime handicaps, the average American farmer produced two and a half times as much in 1944 than his grandfather did 40 years ago.

The first Baptist church in America was founded by Rogers Williams in the Providence settlement of Narragansett Bay.

### How To Get Larger Fall Egg Production

Putting pullets in summer range shelters on soybeans or lespedeza and vaccinations for chicken pox are two of the best practices that can be carried out at this time for increasing egg production in the fall when egg prices are usually relatively high.

T. T. Brown, extension poultryman at State College, suggests plenty of feeders and waterers, and also adequate shade for the pullets while on range.

Plans for building an outdoor, covered type of feeder may be obtained from the county agent or by writing the Agricultural Editor, State College, Raleigh, for a free copy of War Series Bulletin No. 5, entitled "Equipment for Poultry." The county agent can also provide plans for a range shelter that is easy to build and economical as to cost.

"As the chicks get larger, be sure to increase the feeder space," Brown says. "Entirely too many growers are providing too little feeder space as the pullets develop. Green feed and plenty of mash at all times keep the pullets developing rapidly, which is just what is needed for early production of eggs."

Here's a SENSIBLE way to relieve MONTHLY FEMALE PAIN

Lydia E. Pinkham's Vegetable Compound is famous not only to relieve periodic pain but also accompanying nervous, tired, highstrung feelings—when due to functional monthly disturbances. Taken regularly—it helps build up resistance against such symptoms. Pinkham's Compound helps nature! Follow label directions. Try it!

Lydia E. Pinkham's VEGETABLE COMPOUND

Unit for Unit THEY COST YOU LESS

Vitalize with Purest

VITAMIN PRODUCTS

BOONE DRUG COMPANY

BOONE, N. C.

### HIGHEST CASH PRICES PAID

For all kinds, largely one and two-inch White Pine, Old Field and Hemlock. Green or dry. Loaded on our trucks on good road at your mill or delivered our yard. Will give cutting contracts and advance up to 80% to reliable operators as lumber is put on sticks at your yard.

### EDMONDS BROS. LUMBER CO.

BRISTOL, TENNESSEE

## A New "House of Magic" for Postwar America

"...one of the strongest guarantees of progress and world peace is continuous scientific preparedness through industrial research."

General Electric has approved plans for a new \$8,000,000 Research Laboratory. This expenditure has tremendous significance. Scientific research has contributed much to our progress as a nation.

"Many things have been discovered during this war, and we can and must develop them into better things for peacetime.

"Today we have 550 research people on our staff. These new facilities will not only give increased outlet for their abilities, but will provide opportunities for new research minds with new talents.

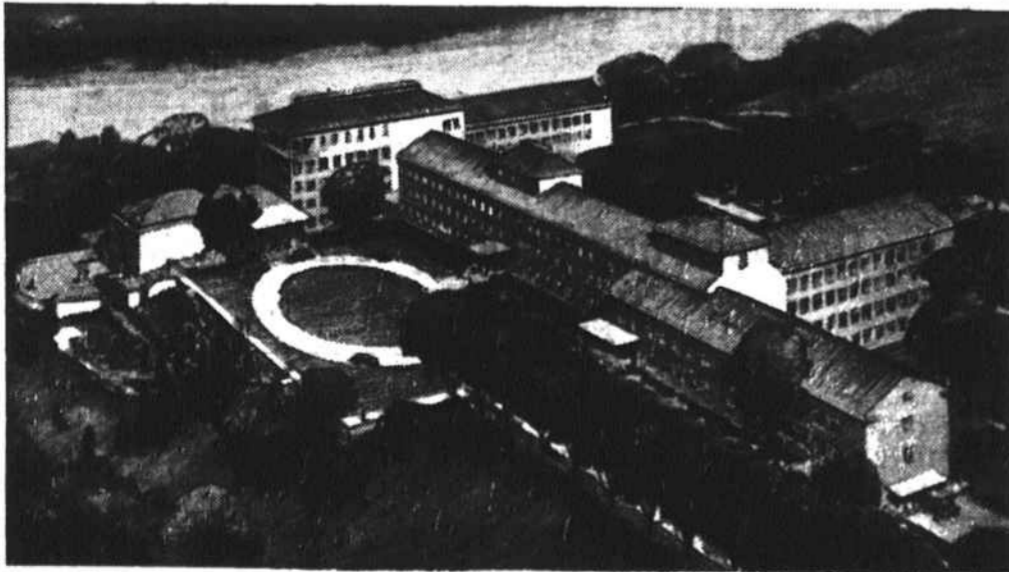
"From this new laboratory we think new achievements will come. In the past, G-E research has contributed much to better living in America—not only through new developments in x-ray,

electricity, metallurgy, electronics and chemistry, but also through reduced cost and increased efficiency, as in the modern incandescent lamp.

"Even more than in the past the laboratory will emphasize research in pure science—continuing and expanding the work begun by Dr. Whitney and the late Dr. Steinmetz forty-five years ago.

"To find new facts of the physical world, to extend the limits of knowledge, is a forward step in creating More Goods for More People at Less Cost."

*W. C. Sullivan*  
President  
GENERAL ELECTRIC COMPANY



New \$8-million-dollar G-E Research Laboratory will be built five miles east of Schenectady, New York, on the Mohawk River. The geographic location offers special advantages for television, high voltage x-ray, and radar research. Buildings with 300,000 square

feet of floor space will accommodate an expanded post-war research staff of about 800. Research rooms will be a scientist's paradise of equipment for experiments in chemistry, physics, mechanics, electronics. It is hoped that construction can start in six months.

Hear the G-E radio programs: The G-E All-girl Orchestra, Sunday 10 p. m. EWT, NBC—The World Today news, Monday through Friday 6:45 p. m. EWT, CBS—The G-E House Party, Monday through Friday 4:00 p. m. EWT, CBS.

FOR VICTORY—BUY AND HOLD WAR BONDS

GENERAL ELECTRIC

## Optional Savings Shares in the Watauga Building & Loan Association

We have had wonderful sales since July 1 in our

### OPTIONAL SAVINGS PLAN

We should be happy to explain this plan to you, and issue you some of these shares.

If you plan to build or buy a home, let us explain our direct reduction plan, which is new, modern and can be adjusted to your needs, on a long time or short time loan, with the privilege of paying off at any date without penalty of any kind.

We shall be glad to discuss your problems with you at any time, and will give you quick service.

## Watauga Building and Loan Association

BOONE, N. C.