

Church Notices

GRACE LUTHERAN CHURCH
The Rev. E. F. Troutman, pastor.
The church of the open door. Sunday School at 10:00 a. m. The annual congregational meeting at 11:00 a. m. At this time church officers for 1963 will be elected and the 1963 church budget adopted. The annual fellowship dinner will follow the congregational meeting. Luther League at 6:00 p. m. Choir rehearsal Wednesday evening.
Union Thanksgiving service Wednesday evening at 7:30 in the Advent Christian Church. Come and Give Thanks.

MT. CALVARY BAPTIST CHURCH—Banner Elk
Rev. Glenn Gentry, pastor
Sunday School at 10:00 a. m. Service at 11:00 a. m.
Training Union at 7:00 p. m. Choir practice at 7:30 p. m. on Wednesday.
MWS 1st Thursday evening, 7:30 p. m.
Visitors welcome.

ST. LUKE'S EPISCOPAL CHURCH
The Rev. W. Todd Ferneyhough, priest-in-charge.
Holy Communion at 8 a. m. First and third Sundays, Holy Communion at 10:30 a. m. Second, fourth and fifth Sundays, morning prayer at 10:30 a. m.
Bible Study, 9:15 a. m. Church School, 10:30 a. m. Evening prayer and Canterbury meeting at 6 p. m. Fridays, Holy Communion at 5 p. m.
Saints' Days, Holy Communion at 5 p. m.

FIRST BAPTIST CHURCH—Blowing Rock
The Rev. George D. Hyler, pastor.
Sunday—Worship Service at 9:00 a. m.; Sunday School at 10:00 a. m.; Morning Worship at 11:00 a. m.; Training Union at 6:30 p. m.; Evening Worship at 7:30 p. m.
Wednesday—Mid-week Service at 7:30 p. m.; Choir Rehearsal at 8:00 p. m.

WATAUGA METHODIST CHURCH
William H. Key, Minister
Piney Grove, First Sun., 9:30 a. m.; Third Sunday, 2:30. Valle Crucis, 11:00 a. m. first and third Sundays.
Liberty, 2:30 p. m., First Sunday, 9:45, third Sunday.
Mable, 9:45 a. m., second and fourth Sundays.
Henson's Chapel, 11:00 a. m., second and fourth Sundays.

FIRST BAPTIST CHURCH
The Rev. J. Boyce Brooks, pastor.
9:40—Sunday School.
11:00—Morning Worship.
6:00—Evening Worship.
6:55—Training Union.
Prayer service Wednesday evening at 7:15 o'clock.

ST. ELISABETH'S CATHOLIC CHURCH
Sunday Mass at 9:00 a. m. Newman Club meets at 10 a. m.

HOLY TRINITY LUTHERAN CHURCH—Deep Gap
Rev. William E. Smith, Pastor
Sunday School: 10:00 a. m. each Sunday
Worship Service: 11:00 a. m. 1st and 3rd Sunday.
Visitors Welcomed.

RUMBLE MEMORIAL PRESBYTERIAN CHURCH—Blowing Rock
The Rev. A. Blake Brinkerhoff, pastor.
Sunday:
9:30—Men's Class Coffee Hour.
10:00—Church School.
11:00—Morning Worship.
6:00—Youth Fellowship Program.
Wednesday:
3:15—Choir practice.
7:30—Prayer and study meeting.

CHURCH OF CHRIST—Boone
Sunday meetings—10:00-12:00 a. m. Bible study, worship, preaching, Lord's supper each Lord's day. 7:30 p. m. evening meeting.
Thursday—7:30 p. m. Bible study.

BOONE METHODIST CHURCH
The Rev. R. H. Ballard, pastor
First Sunday—11:00 a. m.—Bethelview.
First Sunday—2:30 a. m.—Pleasant Valley.
First Sunday—7:30 p. m.—Hopewell.
Second Sunday—11:00 a. m.—Friendship.
Second Sunday night—Bethelview.
Third Sunday—10:00 a. m.—Pleasant Valley.
Third Sunday—11:00 a. m.—Hopewell.
Fourth Sunday—11:00 a. m.—Friendship.
Fourth Sunday—7:30 p. m.—Bethelview.

STONY FORD BAPTIST CHURCH
The Rev. Raymond Hendrix, pastor.
Harlan Greene, Sunday school superintendent.
Sunday—Sunday School at 10:00 a. m.; preaching first and second Sundays at 11:00 a. m.; Training Union at 6:30 p. m.
Wednesday night prayer meeting at 7:00 o'clock.

PRESBYTERIAN CHURCH
The Rev. J. K. Parker, Jr., pastor.
Sunday School at 9:45 a. m.; Morning Worship at 11:00 a. m.
A nursery is kept for small children during the worship service.
Westminster Fellowship at 5:45 p. m.; Youth Fellowship at 6:00 p. m.; Pioneer Fellowship at 6:00 p. m.
Circles of the women of the church meet the first Monday of each month; general meeting each third Monday.
Presbyterian prayer service dial AM 4-2213.

DEERFIELD METHODIST CHURCH
Joseph C. McMurray, pastor.
Sunday School—10:00 a. m. Preaching—11:00 a. m. Prayer Meeting Wednesday at 7:30 p. m.

ZION PRIMITIVE BAPTIST CHURCH
Services will be held the 4th Saturday and Sunday of every month at the Zion Primitive Baptist Church on Beech Creek.

GREENWAY BAPTIST CHURCH
Rev. C. O. Vance, pastor
Sunday School at 9:45 a. m. John B. Robinson, superintendent.
Worship Services 11:00 a. m. Training Union 6:30. Worship Service 7:30. Family Night—Wednesday—7:00.

ADVENT CHRISTIAN CHURCH
The Rev. Floyd N. Boston, pastor.
Sunday School—9:45 a. m. Morning Worship—10:45 a. m. Youth Fellowship—6:30 p. m. Evening Worship—7:30 p. m. Wednesday: Prayer Meeting—7:30 p. m.

PROFFITT'S GROVE BAPTIST CHURCH
Sunday School each Sunday at 10:00 a. m.
Worship each first and third Sunday at 11 o'clock; Conference Saturday night before 3rd Sunday.
Frankie South, superintendent of Sunday School.
Herbert McCoy, pastor.

THREE FORKS BAPTIST CHURCH
The Rev. Homer F. Greene, pastor.
Julian S. McGuire, Sunday School superintendent.
Morning worship 11:00 a. m. Sunday School 10:00 a. m. Baptist Training Union 6:30 p. m. Evening worship 7:30 p. m. Prayer service 7:00 p. m. Wednesday Choir rehearsal 7:30 p. m. Wednesday.

SAINT MARY'S OF THE HILLS—EPISCOPAL
Blowing Rock
Sundays—Holy Eucharist at 8 a. m. and at 11 a. m. First, Third, and Festivals.
Wednesdays—Holy Eucharist at 8 a. m.
Holy Days—Holy Eucharist at 8 a. m.
Church School—Sundays at 10 a. m.
Adult Class and Confirmation Class—Wednesdays at 7:30 p. m.

PERKINSVILLE BAPTIST CHURCH
E. Maurice Cooper, pastor.
Sunday School—10:00 a. m. Worship Service—11:00 a. m. Training Union—6:30 p. m. Evening Worship—7:30 p. m. Prayer Service—Wednesday evening, 7:30 p. m.

STONY FORD BAPTIST CHURCH
The Rev. Raymond Hendrix, pastor.
Harlan Greene, Sunday School superintendent.
Sunday—Sunday School at 10 a. m.; preaching second and fourth Sundays at 11 a. m.; Training Union at 6:30 p. m. Wednesday night prayer meeting at 7 o'clock.

BOONE METHODIST CHURCH
Rev. Preston Hughes, Jr., pastor
Sunday:
9:00—Early Worship
9:45—Church school
11:00—Worship
5:00—Wesley Foundation supper and program
6:30—Junior and senior high youth fellowship

ZION PRIMITIVE BAPTIST CHURCH—Beech Creek, N. C.
Elder Fred G. Clayton, pastor
Meets 2nd and 4th Sundays in each month at 11:00. The public invited.

BETHANY LUTHERAN CHURCH—Big Hill Road
Rev. William E. Smith, Pastor
Sunday School: 10:00 a. m. each Sunday
Worship Service: 11:00 a. m. 2nd and 4th Sunday; 7:30 p. m. 1st and 3rd Sunday.
Luther League: 6:30 p. m. each Sunday.
Visitors welcomed.

CHURCH SINGING
There will be a singing at Winkler's Grove Baptist Church, Route 5, Hickory, Saturday night, November 24 at 7:00. Eugene and Dorothy Black of Clover, S. C., TV singers and the Upchurch recording stars, along with many other fine singers will be appearing. The Rev. Jack Holland is the pastor.
Party leaders, without exception, have recognized the risk of nuclear war and they are willing to take it.

Circuit Assembly Planned By Jehovah's Witnesses

R. L. Dowell, circuit supervisor for Jehovah's Witnesses of the Boone area, announced the group's plan to attend a circuit assembly in North Wilkesboro November 30 through December 2.

"The assembly's purpose is a regular part of an advanced ministerial training program and not a revival," said Mr. Dowell, as he told of the arrangements for the entire families to attend. "The program," he said, "is designed to maintain a high level of spiritual maturity among both adult and juveniles in attendance. The delegates will hear instructions to enable them to apply Bible principles more fully to everyday life."

The convention theme is "Spread the Word of Life." B. E. Griffin, district supervisor from the Brooklyn, N. Y., headquarters of Jehovah's Witnesses, will be the principal speaker. His public address will be on the subject, "The Bible Answer to Our Problem of Survival."

Included among the speakers will be Mr. Dowell and other ministers from the circuit. Several local delegates are assigned to the program and various convention departments to assist in the assembly operation.

ANNUAL 'M' NIGHT SET BY BAPTISTS
The Three Forks Baptist Association will hold their annual "M" Night service at the First Baptist Church on Monday evening, December 3, at 7:30. The program will be on the theme for 1963 which is "Be Ye Witnesses." The highlight of the evening will be a message by Rev. George Hyler, Pastor of the Blowing Rock Baptist Church. The music for the service will be under the direction of Mr. and Mrs. Richard Greer. Mrs. Nora Wilson is the Associational Training Union Director.

The goal for attendance is 250. Twenty churches of the Three Forks Association now have Training Unions. Each church in the Association is seeking to have fifty percent of their enrollment in attendance.


LIVES ALONE AT 92
Ontario, Canada—A 92-year old woman, living alone for the past twenty years, vows she will never leave her home and become dependent on her children.
Mrs. Mary Johnson does all of her work—even chops fire-

wood—and walks a mile to church every Sunday. As a supplement to her \$65-a-month widow's pension, she makes jewel boxes, model cars and other souvenirs.

if...

If you want to buy or sell a home... a farm... a business—watch this space for real values!






Are You Thankful? It took the Pilgrims 65 days to cross the Atlantic for a home. It takes less than a minute to call AM 4-8256 and ask to look over our listings, for a nice home. We recommend you ask to look at the following:

- 1—IMMEDIATE POSSESSION—Good 3 bedroom ranch, large wooded lot. Good terms.
- 2—ARTIST HIDE AWAY—Overlooking Blue Ridge Parkway. New 5 bedroom for anyone desiring seclusion. Privacy. A view and restful country living.
- 3—FOUR BEDROOMS, bath, good old country home with 6 acres, just one-half mile off Parkway.
- 4—YOU NEED A PAINT BRUSH when you buy this old house. Seven rooms, 2 acres land, located just off Parkway—only \$3000. Ideal for summer home.
- 18—GOOD 2 BEDROOM HOUSE, carport, completely furnished. Nice wooded lot located in heart of Blowing Rock. Price \$9500.00.
- 21—15 ACRES LAND—2-10 tobacco base, good barn. Located on new Highway 421 about 8 miles west of Boone.
- 25—LARGE RANCH TYPE BRICK—3 bedrooms, family room, fire-place, double garage, full basement. \$25,000.00.
- 26—FORTY ACRE FARM—You could look for ten years and never find an opportunity like this. 7 bedroom brick, 2 baths, full basement, good outbuilding including a \$11,000 barn. All this for only \$27,500. Immediate possession. Located 14 miles out on hard surface road.
- 5—NEW—One bedroom cottage, full bath, furnace—insulated. Year around living located on mountain stream with screened porch. Price \$4200. Immediate possession.
- 6—NEW—2 bedroom, ceramic bath, wall to wall carpet, carport, full basement. Down payment \$2700. Monthly payments \$65.00.
- 7—3 BEDROOM, bath, new furnace, full basement, located just one block from college. \$1500 down. Monthly payments \$71.00.
- 8—LARGE 3 BEDROOM, 1 1/2 baths, fireplace, large living room, basement. Lot 100 x 300, located two blocks from campus. GOOD FINANCING.
- 9—OVERLOOKING BOONE GOLF COURSE, 3 bedroom, garage, full basement with apartment. Priced for quick sale.
- 10—2 BEDROOM DUPLEX APARTMENT completely furnished, one six room brick house adjoining college campus. Own your home and let it pay for itself.
- 11—FIVE ACRES LEVEL LAND, new 3 bedroom brick—full basement. Located 6 miles out on hard-surface road. Price \$16,500.
- 12—COMMERCIAL BUILDING with 200-foot highway frontage. Located on U. S. 321 By-Pass, Blowing Rock. Ideal for store or restaurant. Can be financed.
- 13—15-ROOM HOUSE, 3 baths, 1 acre land, located about one mile out of town on highway. Price: \$7,500.
- 14—NEW BUSINESS BUILDING AND LOT located in heart of Boone. Ideal for store, shop.
- 15—190 ACRE FARM, good 6 room house; good tenant house, 2 good barns, 50 acres of land can be farmed with tractor. Pasture 100 head of cattle.
- 16—NEW SUMMER COTTAGE located on Mountain Stream. Price \$4,000.
- 17—WE HAVE 8 ACRES LEFT of beautiful rolling land adjoining the U. S. Parkway on hard surface road. Will sell any size lot you want. Ideal for year around home.
- 19—STORAGE BUILDING 30 x 50, Block building. Price \$5,000.00.
- 20—300-FT. ROAD FRONTAGE located at entrance of college. Ideal for motel. Priced for quick sale.
- 22—GOOD GOING BUSINESS—WELL ESTABLISHED. Confidential listing—will quote only to responsible prospects.
- 23—WOODED LOTS ALONG MOUNTAIN STREAM. Price \$250.00 and up. Ideal for summer Cottages.
- 24—OWNER MOVING out of town, new 3 bedroom, 2 baths, large living room with wall to wall carpet, den with fire place; built in breakfast "nook," full basement, double garage. Excellent residential area, just out of city limits.
- 27—SUMMER COTTAGES—New 1-2-3 bedroom cottages on wooded lots or overlooking mountain stream with trout stocked lakes. Good financing. Just two miles from Golf Course. Price \$2,500.00 and up.
- 28—75 ACRES IN GOOD PASTURE with 1,000 feet road frontage, located in Cove Creek section. Price: \$12,000. Good terms.
- 29—6,000 SQ. FOOT WAREHOUSE, 300-ft. highway frontage, on 421. Good terms.
- 30—LARGE 5-BEDROOM HOUSE—2 baths, storm windows, large corner lot. Next to college campus.
- 51—GOOD COMMERCIAL BUILDING for sale. Located in Heart of Business Section. Ideal for any type business. NICE WOOD LOTS, with water located 2 miles out. OLD LOG CABIN—Rebuilt, 2 acres land. Located just one mile from Golf Course. Price \$5,000.00. ONE BLOCK FROM CAMPUS—3 bed room, hot air heat. Price \$9,500.00.

Welcome

TOBACCO GROWERS

WILLIE WELCOMES YOU TO BOONE...

One of The Best Markets

IN THE BURLEY BELT

One of the Best SHOPPING CENTERS In the Mountains!



THE **TARHEEL PLAN** FOR RURAL ELECTRIC LIVING

Go Forward Together

HEAT
LIGHT
POWER



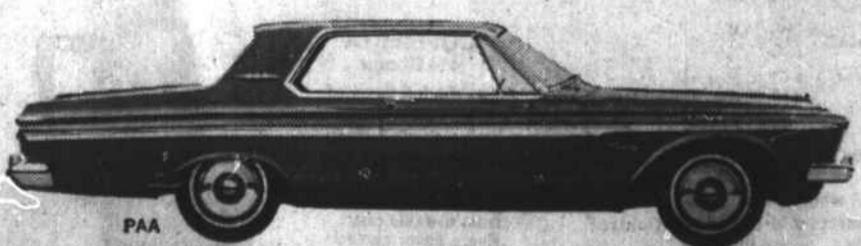
finger-tip **Power** for BETTER LIVING

Blue Ridge Electric Membership Corporation

COMMUNITY OWNED • COMMUNITY BUILT • COMMUNITY BUILDER



Comma—that's a pause—and it'll pay to pause and look at this car.



PLYMOUTH 63... THE STYLE LEADER

BROWN & GRAHAM MOTOR CO.

1515 E. KING ST. Franchise Dealer No. 833 BOONE, N. C.

Coe Insurance & Realty Co.

Dial AM 4-8256 — 217 Main Street