

advertisers invariably use the columns of the Democrat. With its full paid circulation, intensely covering the local shopping area, it is the best advertising medium available.

| BOONE WEATHER | | | | |
|---------------|----|----|-------|-----------|
| 1962 | Hi | Lo | prec. | '61 Hi Lo |
| Dec. 11 | 22 | 7 | .02 | 49 29 |
| Dec. 12 | 8 | -6 | .06 | 54 40 |
| Dec. 13 | 18 | -7 | | 50 24 |
| Dec. 14 | 22 | 11 | | 44 16 |
| Dec. 15 | 42 | 8 | | 49 34 |
| Dec. 16 | 41 | 33 | | 42 29 |
| Dec. 17 | 34 | 42 | | 59 42 |



MISS WATAUGA CUTS RIBBON.—Miss Pat Pittman, an ASTC co-ed who currently reigns as the county beauty queen, cuts the ribbon which officially opens the Blowing

Rock Ski Lodge at ceremonies Saturday. The lodge itself is in the background. Several hundred persons attended the opening.—Photo by Flowers.

Blowing Rock Ski Lodge Has Week End Opening

2 Thousand Gather For Activities

The Blowing Rock Ski Lodge officially opened its first full season of winter sports Saturday, and swarms of skiers converged on the three slopes after pretty Pat Pittman, "Miss Watauga County" cut the ribbon to start the new resort activity.

Sunday long lines of automobiles ascended Ski Mountain, in almost bumper-to-bumper fashion to bring winter sports enthusiasts to the new playground, and large numbers of spectators gathered to fill the lodge and have their first look at the popular winter time sport. Large numbers of skiers were on the slopes throughout the afternoon, and the people came from widely diverse sections of the country.



SKI INSTRUCTORS PAUSE FOR A POSE DURING SATURDAY'S OPENING CEREMONIES AT THE BLOWING ROCK SKI LODGE.—Flowers photo.

BOONE POSTOFFICE HUMS THESE BUSY DAYS

Mailmen Hard Pushed To Serve 13,000

Democrat Out Early

The Christmas week edition of the Watauga Democrat is scheduled to come from the press Friday of this week rather than at the usual time, which would have been the day after Christmas.

In this way the Democrat staff will be able to spend Monday and Tuesday with their families. At the same time it will provide another useful edition before Christmas which will likely contain mostly greeting advertisements.

The Democrat office will be closed Monday and Tuesday.

Those who have not already placed orders for Christmas greeting ads for this special edition, and who haven't been solicited should call the Democrat at once. Likewise, news or other contributions should be in the Democrat office almost immediately to insure insertion in this week end edition.

A.M. Critcher Dies Saturday

Anson Mitchell Critcher, 93, of Blowing Rock, died in Broughton hospital, Morganton, at 2:30 a. m. Saturday following a lingering illness.

Mr. Critcher, a retired carpenter, was born in Watauga county June 9, 1869—during the administration of President Ulysses S. Grant. His birth followed the Alaska Purchase by two years.

A few months after Mr. Critcher's birth came the Financial "Black Friday" in New York; caused by the gold corner. Just prior to his birth, the golden spike was driven at Promontory, Utah, marking the junction of Central Pacific and Union Pacific and completing the railway to the coast. Later the same year a woman's suffrage law was passed in the territory of Wyoming. Also in 1869, Memorial Day was first officially observed.

Mr. Critcher was a son of Guilford and Rebecca Satterwhite Critcher. His wife, Mrs. Laura Howell Critcher, died (Continued on page six)



MISS CHARLOTTE PRESLEY

New Nurse At Hospital

Miss Charlotte Presley, a Registered Nurse Anesthetist, came to work at Watauga Hospital in November of this year. A former resident of Charlotte, she graduated from O'Donoghue High School in 1953 and received her nurses training at Mercy Hospital in Charlotte. After completing her nurses training in 1956, she was employed at the Nalle Cline. In 1960, Miss Presley entered the North Carolina Baptist Hospital School of Anesthesia in Winston-Salem, and completed the course in October 1962. Miss Presley resides at the Watauga Hospital Nurses Home, and attends St. Elizabeth's Catholic Church.

Court House To Have Holidays

The County Courthouse will be closed Monday and Tuesday, December 24 and 25, according to Robert Shore, Jr., tax supervisor.

The public offices will re-open Wednesday morning.

By DALE GADDY

The little toe-headed boy stood on tip-toe and inched his innocent blue eyes above the counter top. Peering beyond the barred window he called, "Gimme this many four cent stamps, please."

As his eyes focused on an approaching figure he unfolded his chubby hand and dropped several coins on the stainless steel counter. The man inside the cage chuckled with the warmth of a Santa Claus as he winked at the small tot. Seconds

The Boone post office will be open all day Saturday for the receiving of mail and the purchasing of stamps, according to Postmaster Ralph Beshears.

Mr. Beshears added that Christmas cards being sent via air mail to insure delivery before the 25th.

later, the man handed several stamps to the youngster who replied in an apparently well rehearsed manner, "Thank you, sir."

The wee Wataugan moved through the post office foyer, pressed against one of the heavy front doors, and skipped out of sight.

Inside the cage the yet-smiling man said, "He's one of approximately 13,000 patrons we have at the Boone post office." The speaker slid the stamp drawer back into its cavity, turned, and walked to his carpeted office.

Sitting in a leather covered (Continued on page 1, sec. C)

Burley Warehouses Set Closing Dates

Tobacco sales this week at Big Burley Warehouse in Boone netted 209,146 pounds at \$57.41 per hundred for a total of \$120,983.68, according to warehouse officials.

Big Burley's last sale of the month will be Thursday, December 20. The warehouse will re-open for a sale on January 8.

Figures for the week just past were not made available in detailed form by Mountain Burley Warehouses although officials did report a running total of 3,450,158 pounds of tobacco sold since the market opened a few weeks ago. Mountain Burley has paid out a total of \$2,117,168.98 during the sales.

The latter market will close December 21 and will re-open January 7.

Seal Sales Reach 52 Percent Goal

During the accounting period of last week the Christmas Seal Campaign showed Watauga County as having reached 52% of its 1962 goal, according to Grady Moretz, Jr., Seal Chairman of the Watauga Tuberculosis Association.

Mr. Moretz and the Board of Directors of the Tuberculosis Association are highly pleased with the response so far to the Christmas Seal Letters. Those who have been busy with holiday doings and failed to answer their seal letters are urged to take a moment now for their participation in this worthwhile program. The next reporting and accounting period for seal contributions will be early in January.

Reminders have been mailed to those "busy people" who have not found time to answer their seal letters. Mr. Moretz points out that if the original reply envelope has been misplaced by anyone, just any envelope, with your name and address, would bring your Christmas Seal contribution when addressed to the Watauga Tuberculosis Association, Boone.

Santa Claus Will Appear At Ski Slope

Santa Claus is going to make a special appearance at the Blowing Rock Ski Lodge December 25th at 1 o'clock, President M. E. Thalheimer announced Monday afternoon.

The jolly old elf with the snowy beard will don the slippery slivers and go plummeting down the main ski slope Christmas afternoon to the delight of the youngsters and others.

Mr. Thalheimer points out that everyone is invited, but that a spectator charge will be in effect.

young corporation; press, radio and television representatives from over the South-east, and several hundred spectators, including veteran skiers and many others attracted to the sport for the first time by the new resort.

About three feet of snow, provided both by nature and by the resort's modern snow making machinery, covered the slopes which were hewn out of a barren mountainside.

At a dinner Saturday night M. E. (Bill) Thalheimer, president of the corporation, told officials and other guests: "The advent of winter (Continued on page six)

ASC Personnel Setting Up Feed, Grain Bases For Farms

Local Agricultural Stabilization and Conservation Service personnel are presently in the process of setting up feed grain bases and productivity indexes on all Watauga county farms with a 1959-60 history of at least one acre average, according to Roy W. Isley, ASCS county office manager.

The ASC community committees review the history of planted acreage and set a farm base and also recommend a preliminary index for each farm in their respective community.

After all indexes have been set in a community the county

committee will review and approve bases and indexes on each farm in the county. The total base acreage cannot exceed the program acreage of 3007 acres as set by the Agricultural Marketing Service, Mr. Isley said. The average yield of all farms on corn has been set at 61.7 bushels for the county and the total index for the county must fall within very close tolerance to this average.

The Secretary of Agriculture announced a special provision for "small farms" that divert acreage under the 1963 feed grain program. These small farms (farms with a total base of less than 25 acres) can divert their entire acreage and get a payment on the entire acreage based on 50 percent of the county price support rate. It was originally announced that these farmers would get a pay-

(Continued on page six)

Bank Plans Proceeding

Plans are proceeding toward the opening of the First National Bank of Boone, it was learned the first of the week, and stock in the enterprise is now being offered to the public.

Mr. G. R. Andrews will be the acting agent for the Bank, and it is explained that all funds from the sale of stock will be deposited in the North Carolina National Bank until the new bank is in operation.

Stock may be purchased from either one of the following organizers:

A. J. Williams, E. F. Coe, G. R. Andrews, agent; Phil H. Vance, Jr., J. T. Winkler, Tom Greer, Mack D. Brown.

When the \$300,000 authorized stock is sold, a board of directors will be named by the stockholders, it is explained.

The plans of the new bank are to occupy the former location of the Boone Trail Restaurant, adjoining the Watauga Savings & Loan Association. The new bank organizers say they hope to have the building remodeled and have the institution in operation within 90 days.

Health Dept. Closing Set

The Health Department will be closed the following dates for the Christmas holidays, Monday, Tuesday and Wednesday, December 24, 25, and 26, and also on Tuesday January 1, New Years Day.

Trailer, With Chemicals, Burns On 421

North Wilkesboro.—The trailer of a tractor-trailer rig loaded with inflammable chemicals was consumed Friday by fire in an accident along U. S. 421 east of Boone.

Ray McDaniel of Robbins, who had just driven down a series of mountain roads from the Tennessee line, escaped injury. He said the fire apparently started from faulty rear brakes.

McDaniel stopped the rig when he first smelled smoke, attempted to put out the fire with a portable extinguisher, (Continued on page six)

Governor Names Putnam To Textbook Commission

Miss Charles Elizabeth Putnam, first grade teacher at the Boone Elementary School, was recently sworn in by Governor Terry Sanford as a member of the North Carolina Textbook Commission.

Her appointment is for three years.

The commission is composed of teachers, principals, supervisors, and superintendents. Miss Putnam will assist in reviewing and evaluating textbooks for adoption by the State within the next three years.

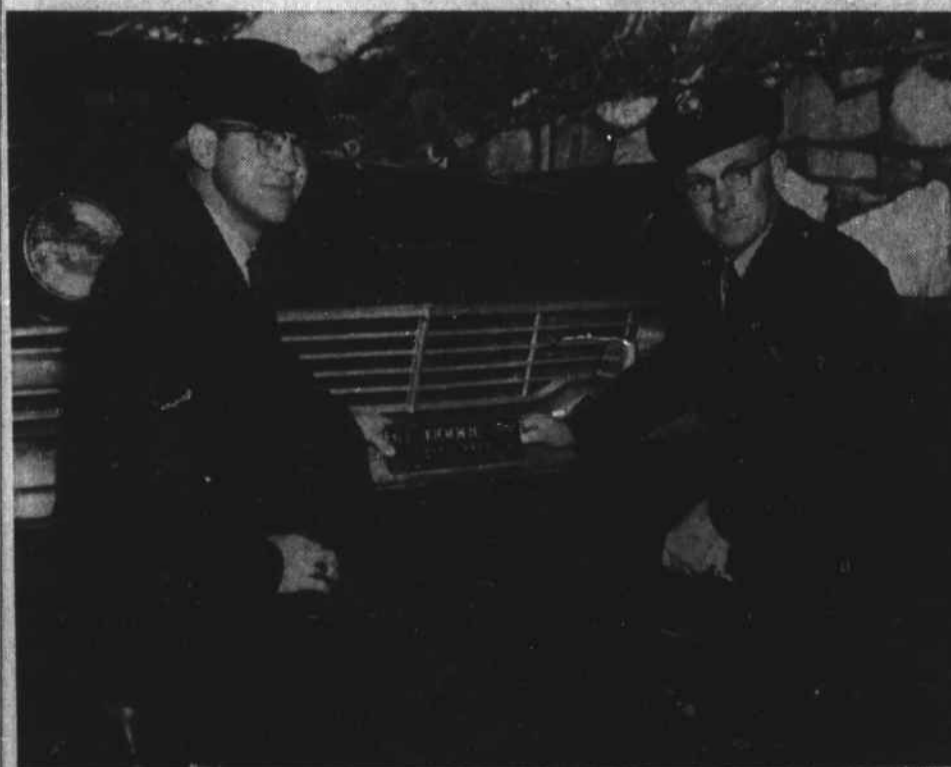
A native of Cleveland county, Miss Putnam is a graduate of Appalachian College and George Peabody College. She has been

associated with the Boone Elementary School since 1952 and is a member of the ASTC Education Department.

When sworn in at Raleigh, Gov. Sanford made the following remarks: "The last Textbook Commission had to read so many books that they almost ended up blind and with a cane."

Miss Putnam said that the first thing that she did upon returning from Raleigh was to buy a good pair of glasses.

Dr. W. H. Plemons, president of Appalachian, had bookcases built in Miss Putnam's study at school to hold the many books she will be reviewing during the next three years.



FIRST TAG.—Boone's first city automobile tags went on sale Monday at City Hall Here, Chief of Police Hubert Thomas assists the initial customer, David Spainhour, with the plate. Thomas states that the tags, man-

datory for all persons living within the town limits more than 14 days out of the year, will be on sale until February 15. The yellow-on-black tags sell for one dollar each; 1,500 were on hand Monday.—Staff photo.